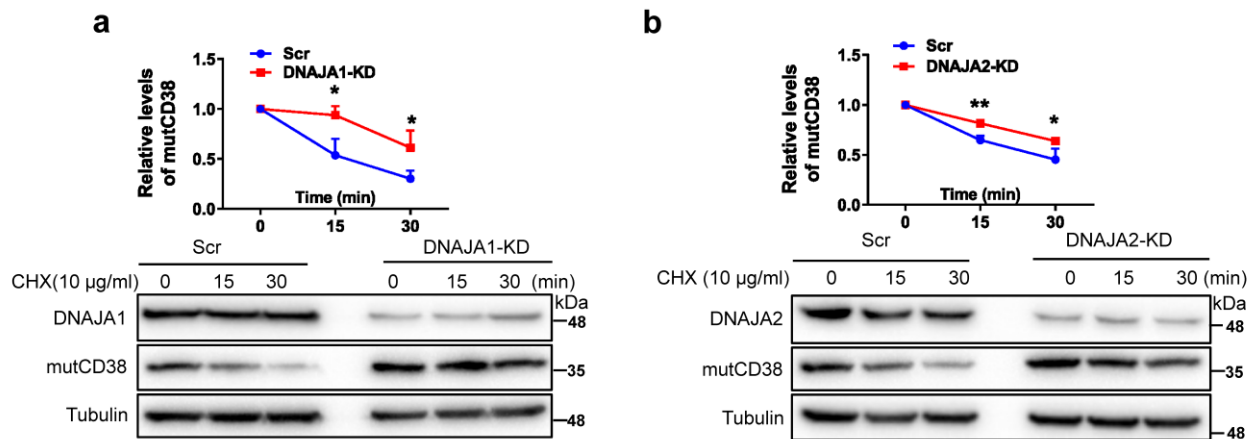


Suppl Figure 1. single-fusion controls of BiFC assay shown in Fig. 1c. The expression vectors for Hip-VC155 (upper panel), VN173-sCD38 (middle panel) or mutCD38-VN173 (lower panel) was transfected to HEK-293T. The expression of the fusion proteins and BiFC signals were analyzed as Fig. 1c. BiFC signal, yellow; immunostaining of CD38, red; Hip, far red; nuclear staining (DAPI), blue. The merged image showed superposition of BiFC, CD38, Hip, and DAPI signals. Scale bar: 20 μm .



Suppl Figure 2. Chase experiments were performed as Fig. 4d except that the siRNAs are specific to DNAJA1 (a) or DNAJA2 (b).