

1
2
3
4
5
6
7
8
9
10
11
12
13
14
15
16
17
18
19
20
21
22
23
24
25
26
27
28
29
30
31
32
33
34
35
36
37
38
39
40
41
42
43
44
45
46
47
48
49
50
51
52
53
54
55
56
57
58
59
60
61
62
63
64
65

Figure S1

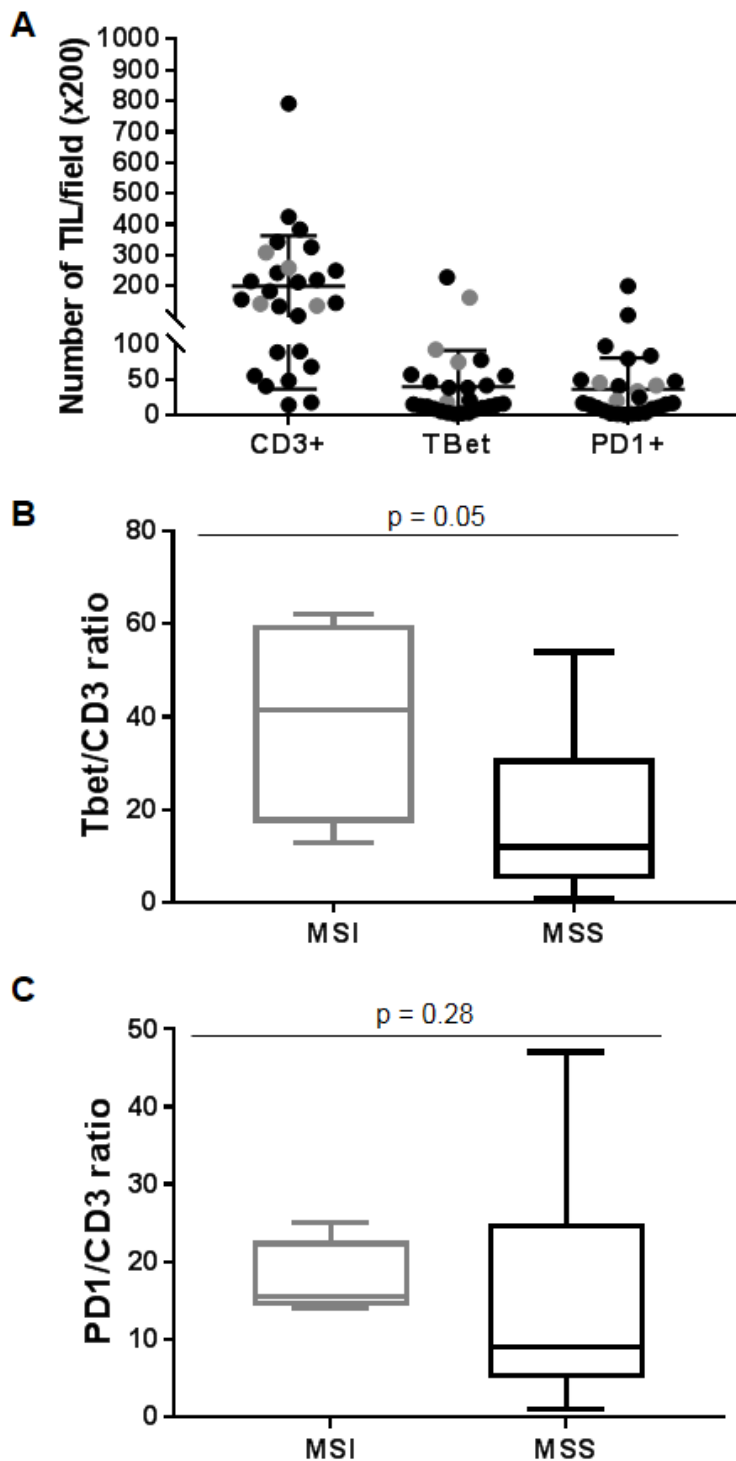


Figure S1. Density of TILs in the prospective cohort 2 of CRC (23 MSS and 4 MSI). (A) Density of CD3+, Tbet+, PD1+ TILs. Black dots: MSS CRC; grey dots: MSI CRC. Bars represent mean \pm sem. (B) (C) Tbet/CD3 and PD1/CD3 ratio according to the MSS/MSI status of CRC.

1
2
3
4
5
6
7
8
9
10
11
12
13
14
15
16
17
18
19
20
21
22
23
24
25
26
27
28
29
30
31
32
33
34
35
36
37
38
39
40
41
42
43
44
45
46
47
48
49
50
51
52
53
54
55
56
57
58
59
60
61
62
63
64
65

Figure S2

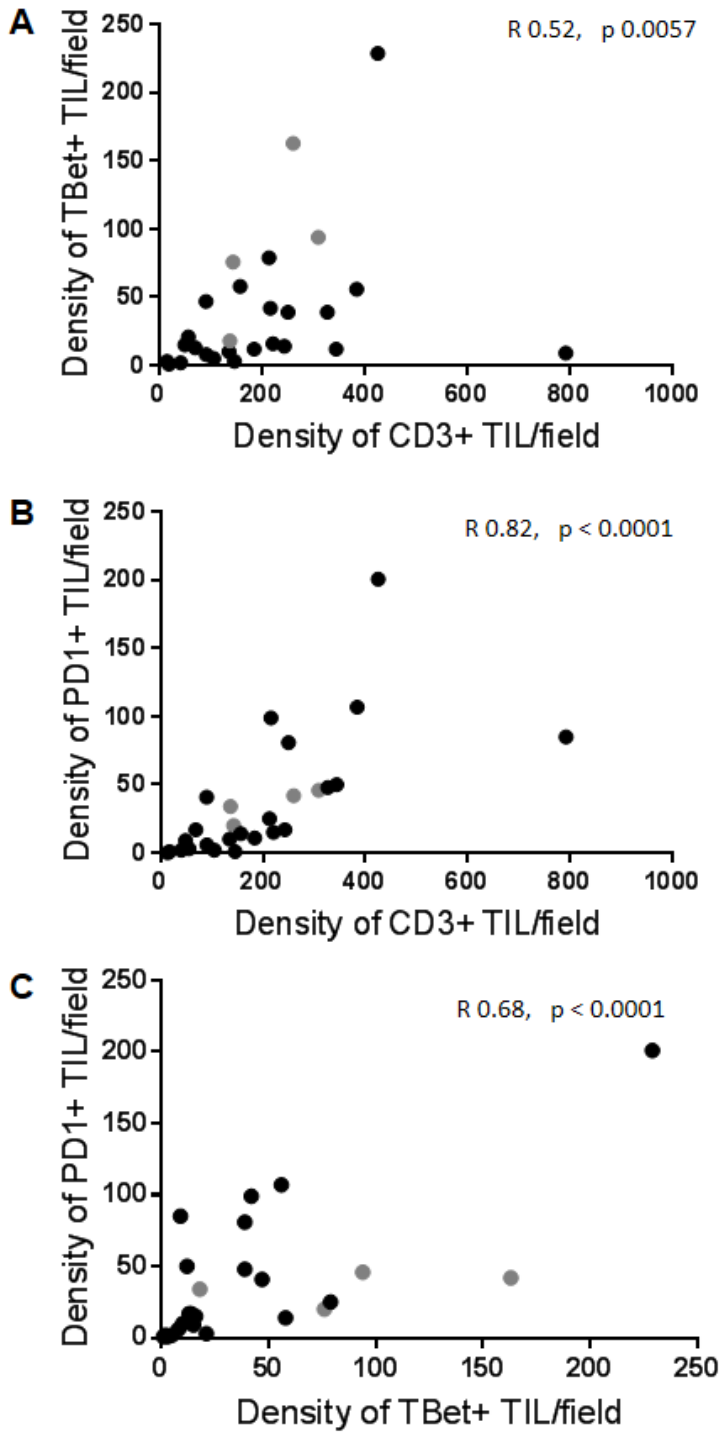


Figure S2. Correlation between the different populations of TILs in the prospective cohort 2 of CRC. Significant correlations between CD3+ and Tbet+ (A), CD3+ and PD1+ (B), and between Tbet+ and PD1+ (C) TILs. P values and correlation coefficient were calculated with the Spearman's correlation test. Black dots: MSS CRC; grey dots: MSI CRC.

1
2
3
4
5
6
7
8
9
10
11 **Figure S3**
12
13
14
15

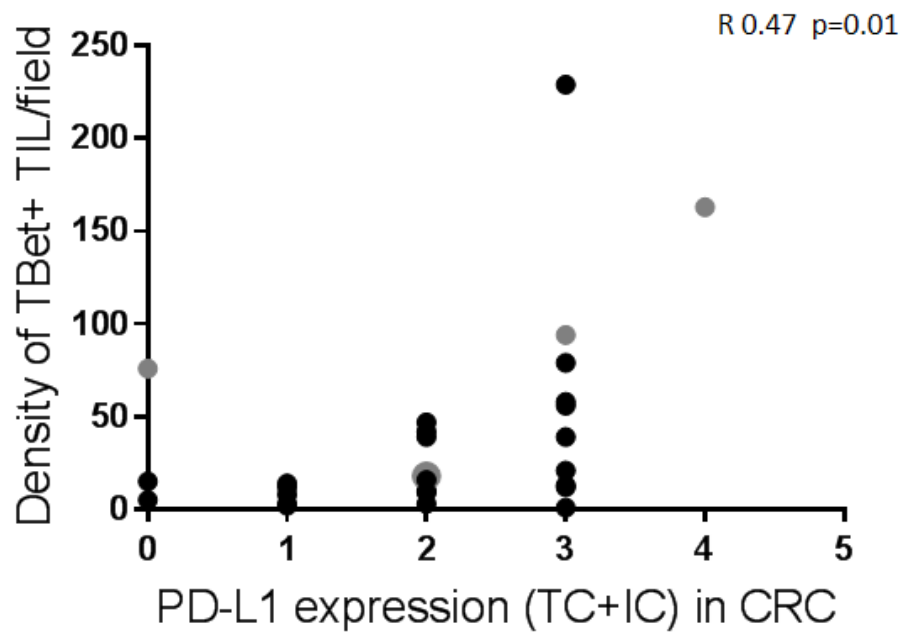


Figure S3. Relation between PDL1 expression profile and density of Tbet+ TILs in the prospective cohort 2 of CRC. Significant correlation between the density of Tbet+ TILs and the score of PDL1 expression in tumor cells (TC) and immune cells (IC). Spearman's correlation test. Black dots: MSS CRC; grey dots: MSI CRC.

Table S1. Expression profile of PDL1 by tumor cells and/or immune cells among CRC.

	MSI medullary n = 21 n (%)	MSI non medullary n = 20 n (%)	MSS medullary n = 1 n (%)	MSS non medullary n = 38 n (%)
Tumor cells (TC)				
Score 0	8 (38)	14 (70)		38 (100)
Score 1-2	1 (4.7)	5 (25)		
Score 3	4 (19)	1 (5)		
Score 4	8 (38)	0		
Immune cells (IC)				
Score 0	6 (28.5)	5 (25)		7 (18.4)
Score 1	4 (19.1)	3 (15)		14 (36.8)
Score 2	8 (38.1)	6 (30)		17 (44.7)
Score 3	3 (14.3)	6 (30)	1	0
TC + IC				
Score 0	2 (9.5)	5 (25)		7 (18.4)
Score 1 - 2	3 (14.2)	7 (35)		31 (81.6)
Score 3 - 7	16 (76.3)	8 (40)	1	0

Table S2. Clinicopathological features of PDL1-positive or IDO-1-positive CRC.

	PDL1 + (TC + IC)		PDL1 - n = 14	IDO-1 + (TC) n = 34	IDO-1 - n = 46
	Score ≥ 1 n = 66	Score ≥ 3 n = 24		Score ≥ 1	
Age					
mean (range)	72.4 (35-95)	78.9 (60-95)	72.3 (55-89)	74 (54-89)	71 (35-95)
Gender					
Male	40 (60.6%)	7 (29%)	9 (64.3%)	15 (44)	20 (43.5)
Female	26 (39.4%)	17 (70.8%) *	5 (35.7%)	19 (56)	26 (56.5)
Stage (UICC)					
I	7 (10.6%)	0	1 (7)	2 (5.9)	6 (13)
II	30 (45.5%)	14 (58.3%) *	3 (21.4)	20 (58.8)	13 (28.3)
III	19 (29%)	7 (29%)	6 (43)	8 (23.5)	17 (37)
IV	10 (15%)	3 (12.5%)	4 (28.6)	4 (11.8)	10 (21.7)
Tumor size					
mean (cm)	2.64	7.06 *	5.23	6.4	5.7
Histological subtypes					
NOS, WD or MD	33 (50%)	3 (12.5%)	6 (42.8%)	13 (38.3%)	25 (54.3%)
NOS, PD	2 (3%)	2 (8.3%)	1 (7%)	1 (3%)	1 (2.2%)
Medullary	20 (30.3%)	15 (62.5%) *	2 (14.3%)	11 (32.4%)	11 (24)
Mucinous	10 (15.2%)	4 (16.6%)	4 (28.6%)	7 (20.6%)	7 (15.2%)
Polymorphous	1 (1.5%)	0	0	1 (2.9%)	2 (4.4%)
Serrated	0	0	1 (7%)	1 (2.9%)	0
Tumor site					
Right colon	35 (53%)	23 (96%) **	11 (78.5%)	15 (44%)	31 (67%) *
Others	31 (47%)	1 (4%)	3 (21.5%)	19 (56%)	15 (33%)
Microsatellite/MMR status					
MSI	34 (51.5%)	23 (96%) **	7 (50%)	19 (56%)	22 (48%)
MSS	32 (48.5%)	1 (4%)	7 (50%)	15 (44%)	24 (52%)
Mutational status					
RAS mutant	14 (24.5%)	2 (9%)	1 (12.5%)	8 (23%)	7 (24%)
BRAF mutant	17 (29.8%)	13 (59%)	4 (50%)	12 (34%)	9 (31%)
RAS, BRAF wild type	26 (45.6%)	7 (32%)	3 (37.5%)	15 (43%)	13 (45%)
Unknown	9 (13.6%)	2 (8%)	6 (43%)	11 (24%)	5 (15%)

WD: well differentiated; MD: moderately differentiated; PD: poorly differentiated; *p value < 0.05; **p value < 0.01