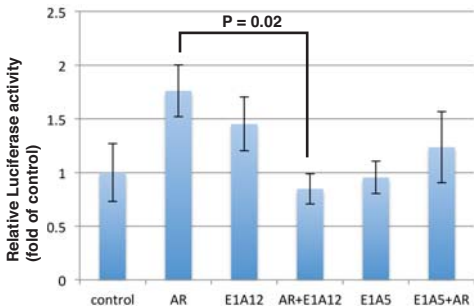
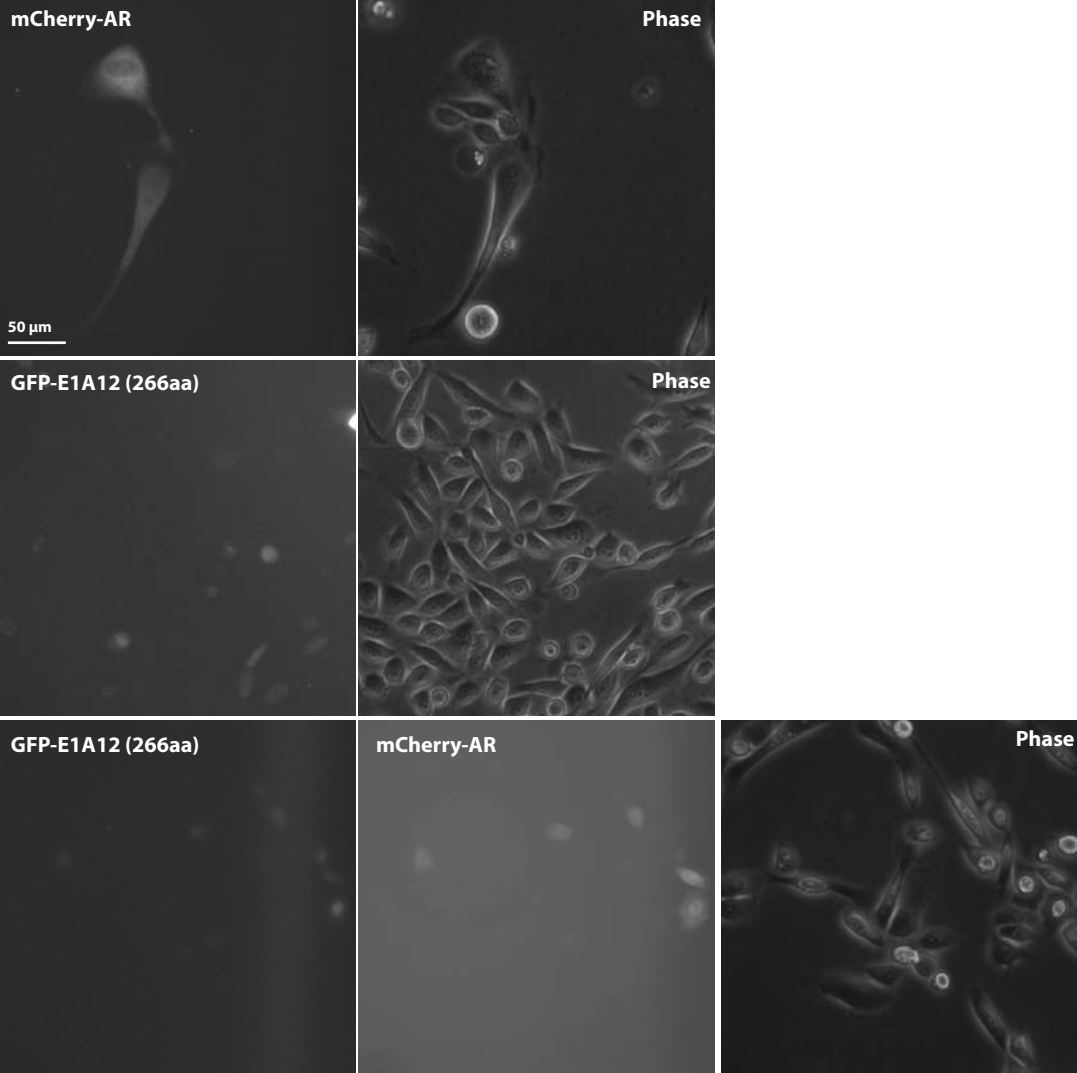


## Reporter: KLK3-Luc

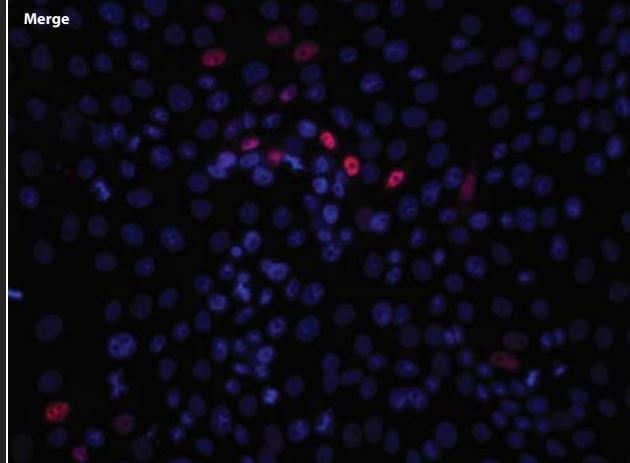
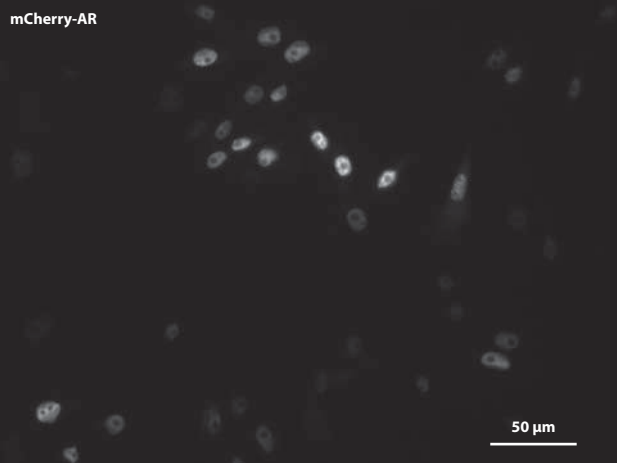


**Figure S1. E1A12 inhibits AR-mediated transactivation.** DU145 cells were transfected with a firefly luciferase reporter under the control of the KLK3 promoter and a control renilla luciferase reporter along with other indicated expression plasmids. AR is a full-length cDNA construct of AR. Dual luciferase activities were measured 24h after transfection. Shown are average values of three transfections along with SEM. The P value was calculated based on Student's t test.

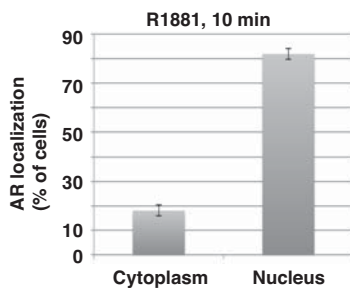
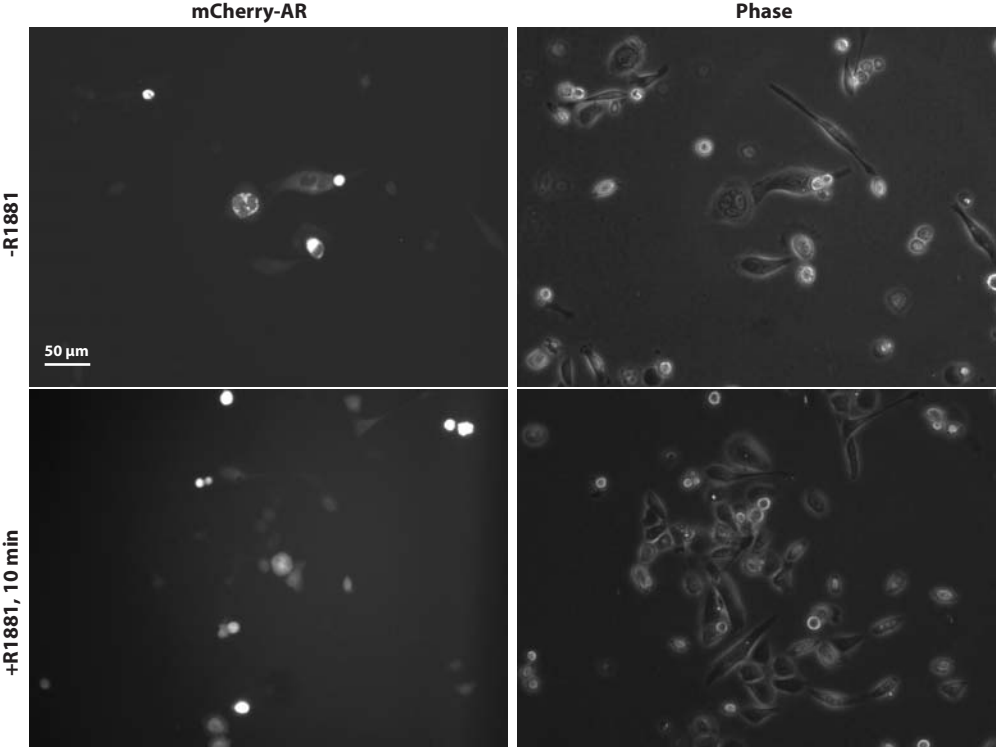


**Figure S2. E1A12 promotes AR nuclear translocation in the absence of androgens in PC-3 cells**

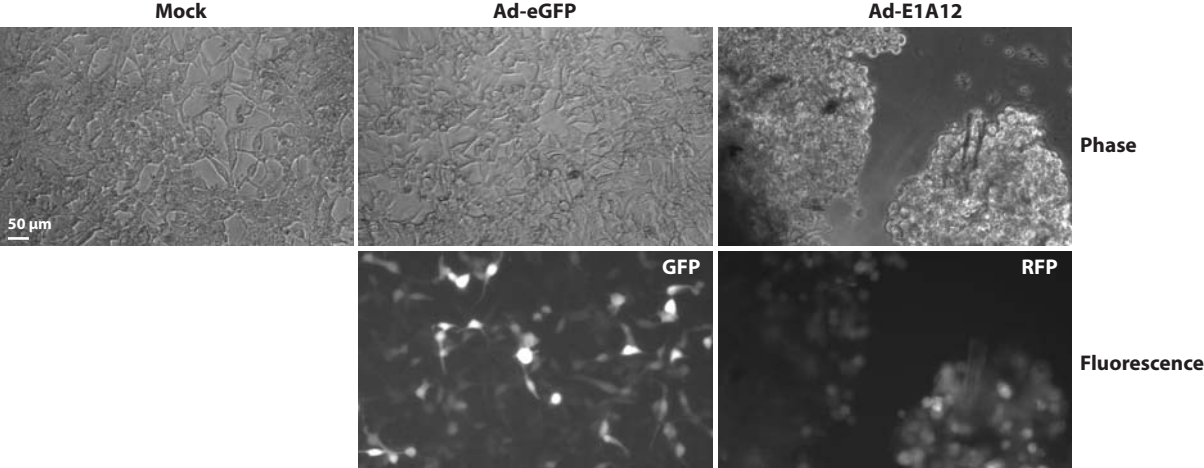
PC-3 cells were transfected with mCherry-AR, GFP-E1A12 (266aa) or their combination. The transfected cells were cultured in the absence of androgens. At 24h after transfection, live cell imaging was conducted. Representative images are shown.



**Figure S3. AR nuclear localization in Saos-2 cells at 24 h after the addition of R1881.** Saos-2 cells were transfected with mCherry-AR and cultured in the absence of androgens as in Figure 3. The androgen analog R1881 was added to the cell culture to a final concentration of 1 nM. Cells were imaged at 24 h after the addition of R1881.

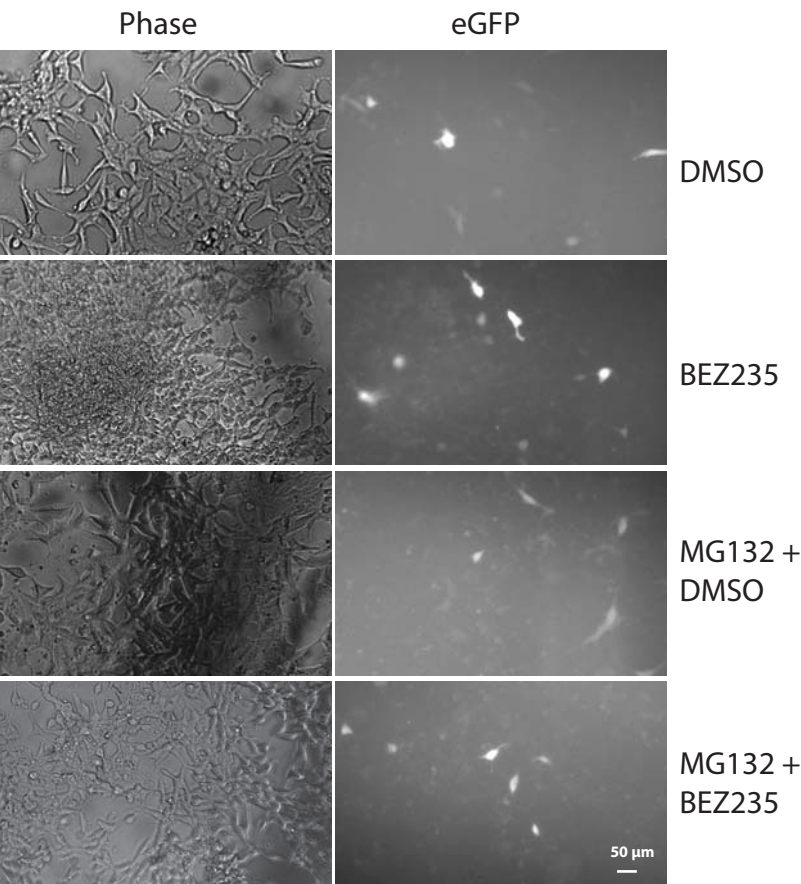


**Figure S4. Rapid AR nuclear entry upon the addition of R1881.** PC-3 cells were cultured in the absence of an androgen as in Figure 3. The androgen analog R1881 was added to the cell culture to the final concentration of 1 nM. Live cell imaging was done immediately before (-R1881) and at 10 min after the addition of R1881. The lower panel shows quantitative intracellular localization of AR. Quantification was done as in Figure 3.



**Figure S5. Infectivity of Ad-eGFP and Ad-E1A12.** LNCaP cells were uninfected, infected with Ad-eGFP (middle panels) or Ad-E1A12 (right panels) at 100 vps/cell. Shown are representative images acquired at 24 h post infection.

# Ad-eGFP infection of LNCaP cells



**Figure S6. Fluorescence images of LNCaP infected with Ad-eGFP.** LNCaP cells infected with Ad-eGFP at 100 vps/cell were treated with the indicated compounds. Shown are representative images acquired at 24 h post infection.