

**Mathematical modelling of the impact of treating latent tuberculosis infection in the elderly in a city with intermediate tuberculosis burden**

**Authors and affiliations:**

Ka Chun Chong <sup>a,b\*</sup>, Chi Chiu Leung <sup>c</sup>, Wing Wai Yew <sup>a</sup>, Benny Chung Ying Zee <sup>a,b</sup>,  
Greta Chun Huen Tam <sup>a</sup>, Maggie Haitian Wang <sup>a,b</sup>, Katherine Min Jia <sup>a</sup>, Pui Hong Chung  
<sup>a</sup>, Steven Yuk Fai Lau <sup>a</sup>, Xiaoran Han <sup>a</sup>, and Eng Kiong Yeoh <sup>a\*</sup>

<sup>a</sup> JC School of Public Health and Primary Care, The Chinese University of Hong Kong,  
Hong Kong, China

<sup>b</sup> Clinical Trials and Biostatistics Laboratory, Shenzhen Research Institute, The Chinese  
University of Hong Kong, China

<sup>c</sup> Tuberculosis and Chest Service, Department of Health, Hong Kong, China.

**\* Corresponding author**

Eng Kiong Yeoh

**Mailing address:** Rm 501, School of Public Health and Primary Care, The Chinese  
University of Hong Kong, Hong Kong, China

**Telephone number:** 852 22528716

**E-mail:** yeoh\_ek@cuhk.edu.hk

**Supplementary Information File: Supplementary figure S1**

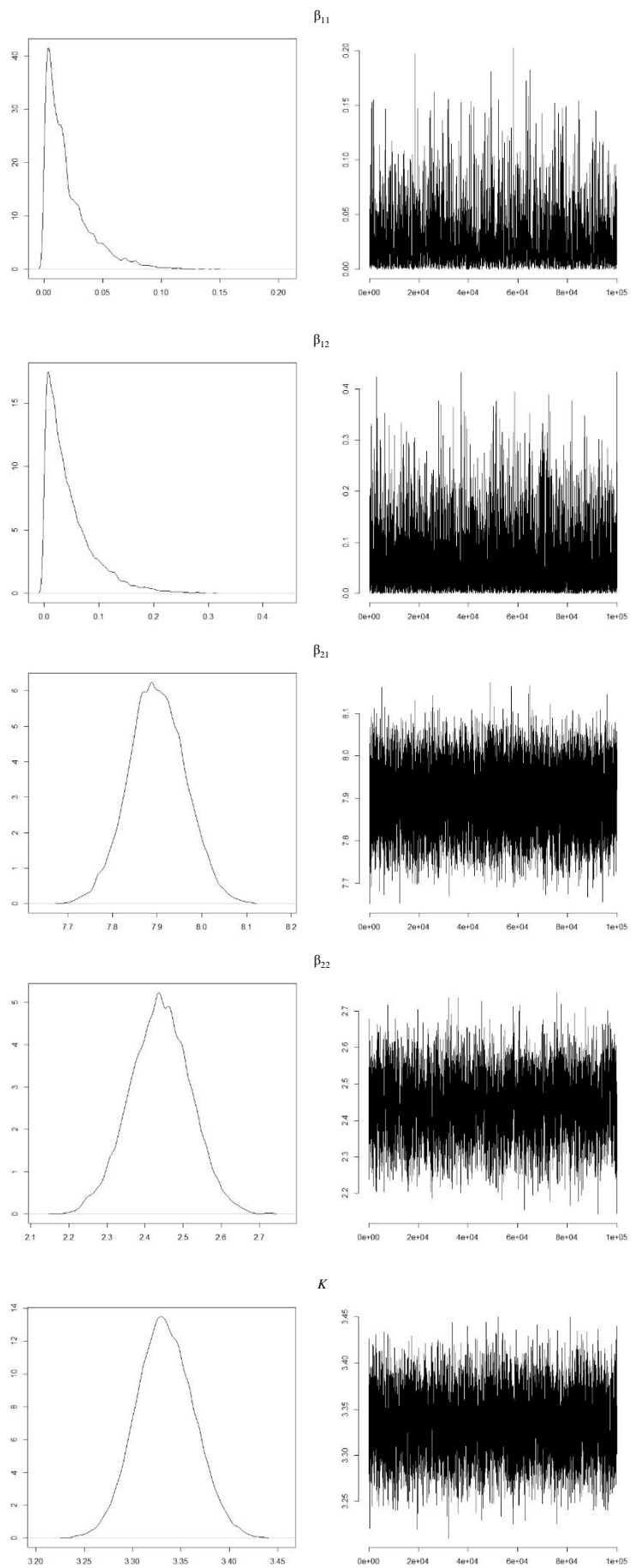


Figure S1. MCMC density functions (left panel) and convergence plots (right panel) for the posterior distributions of estimated parameters