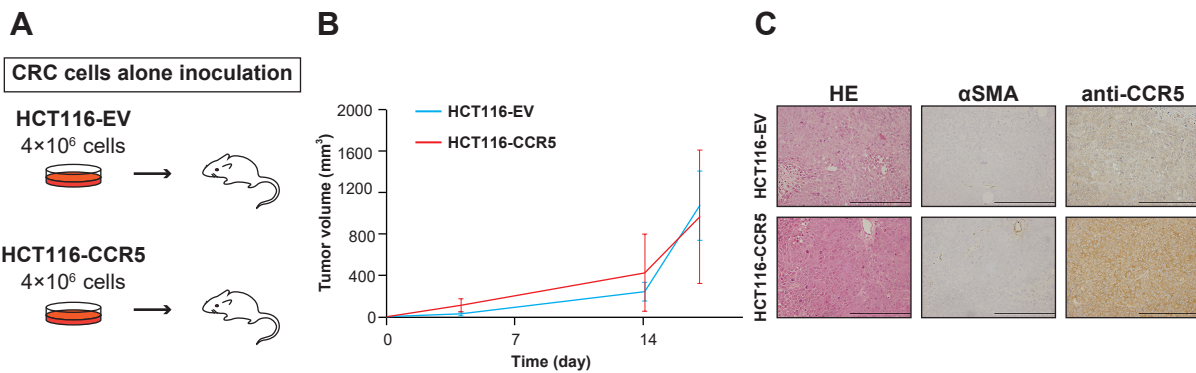


# Figure S1



**Supplementary Figure S1.** Effect of CCR5 on the tumor growth in vivo.

**A** Schema of inoculation mice model. HCT116 transfectant cells were inoculated into mice. **B** Xenograft growth curves of HCT116-EV and HCT116-CCR5. Mean; bar, ± SE, n=6. **C** Histological findings of xenograft. H&E and immunohistochemical staining for αSMA and anti-CCR5. Scale bar, 200 μm.