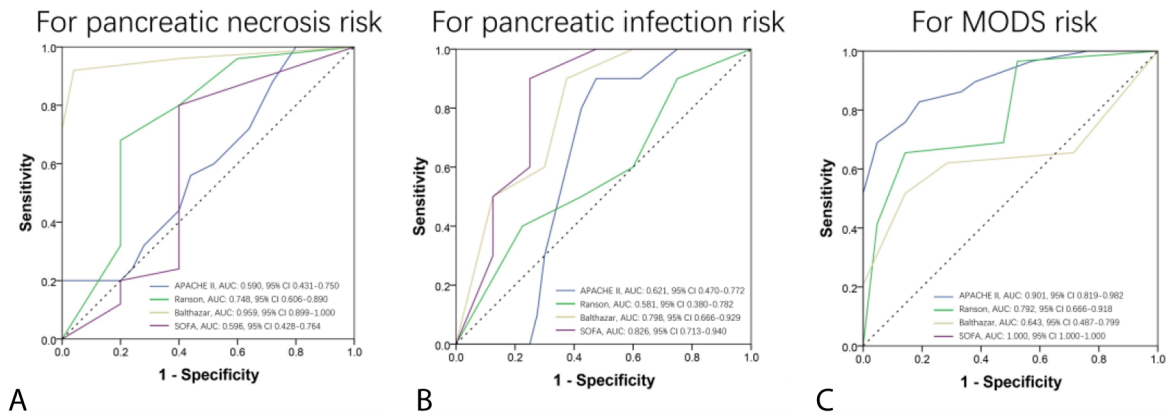


# Correlation of Serum and Ascitic Fluid SuPAR Levels With Patient Complications, Disease Severity, Inflammatory Markers, and Prognosis in Patients With Severe Acute Pancreatitis

## SUPPLEMENTAL DIGITAL CONTENT



**SUPPLEMENTARY FIGURE 1.** ROC curve analysis of APACHE II, Ranson, Balthazar, and SOFA scores for risk of severe complications. A, ROC curves for pancreatic necrosis risk; B, ROC curves for pancreatic infection risk; C, ROC curves for MODS risk. Predicting value was determined by ROC curve analysis. ROC indicates receiver operating characteristic; APACHE, acute physiology and chronic health evaluation; SOFA, sequential organ failure assessment; MODS, multiple organ dysfunction syndrome.