

Extensive use of Fish Aggregating Devices together with environmental change influenced the spatial distribution of a tropical affinity fish

Mauro Sinopoli*¹, Valentina Lauria², Germana Garofalo², Teresa Maggio³, Tiziana Cillari³

¹ Stazione Zoologica Anton Dohrn Napoli, Villa Comunale, 80121, Napoli, Italy

²IRBIM - Istituto per le Risorse Biologiche e le Biotecnologie Marine, CNR - National Research Council, Via Luigi Vaccara 61, 91026 Mazara del Vallo (TP), Italy.

³Institute for Environmental Protection and Research (ISPRA), BIO-CIT. Lungomare Cristoforo Colombo n. 4521 (ex complesso Roosevelt) Località Addaura, 90149 Palermo ITALY.

* mauro.sinopoli@szn.it

Appendix S2 Results; *The maps of the six environmental variables*

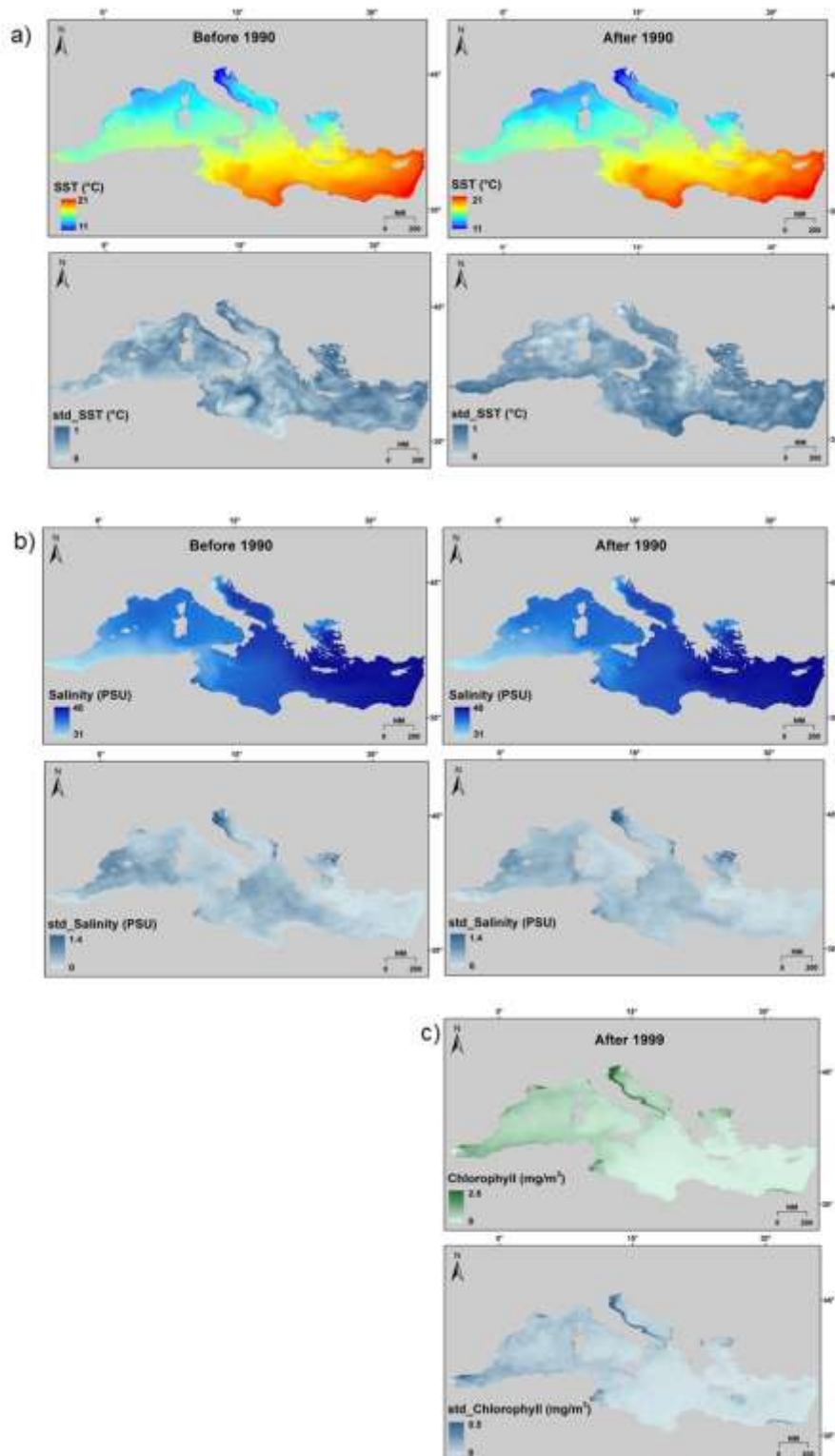


Figure S2 The spatial patterns of the environmental variables used to map the habitat models for the periods before and after 1990. These include (a) Sea Surface Temperature and its standard deviation; (b) Salinity and its standard deviation; (c) Chlorophyll and its standard deviation).

Extensive use of Fish Aggregating Devices together with environmental change influenced the spatial distribution of a tropical affinity fish

Mauro Sinopoli*¹, Valentina Lauria², Germana Garofalo², Teresa Maggio³, Tiziana Cillari³

¹ Stazione Zoologica Anton Dohrn Napoli, Villa Comunale, 80121, Napoli, Italy

²IRBIM - Istituto per le Risorse Biologiche e le Biotecnologie Marine, CNR - National Research Council, Via Luigi Vaccara 61, 91026 Mazara del Vallo (TP), Italy.

³Institute for Environmental Protection and Research (ISPRA), BIO-CIT. Lungomare Cristoforo Colombo n. 4521 (ex complesso Roosevelt) Località Addaura, 90149 Palermo ITALY.

*mauro.sinopoli@szn.it

Appendix S3 Results; *Caranx crysos* distribution maps

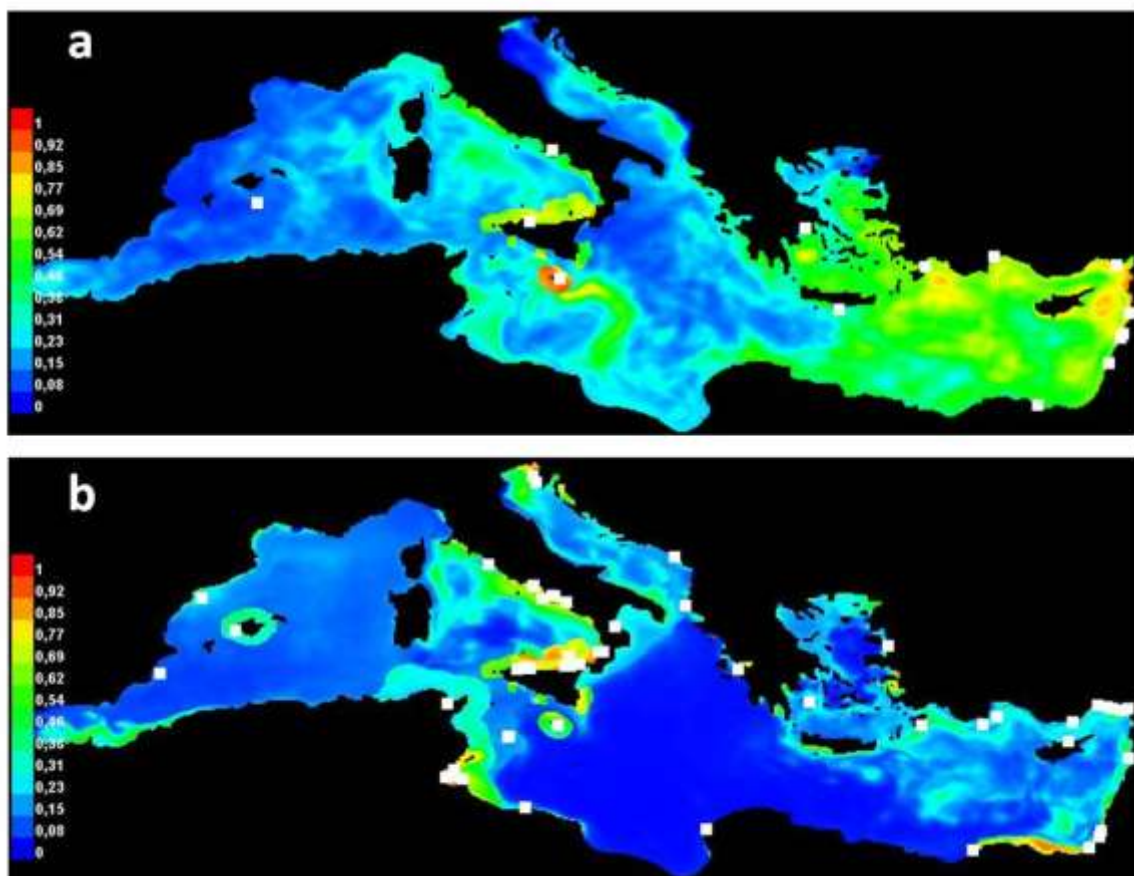


Figure S3 Predicted distribution from the MaxEnt representing the preferential habitat of *C. crysos* a) for the periods from 1955 to 1990 (A90 model); b) for the periods from 1990 to 2017 (P90 model). Colors indicate the likelihood of presence of the species for each cell, ranging from 0 to 1. White dots show the presence locations used for training.

