

The EEG signature of sensory evidence accumulation during decision formation closely tracks subjective perceptual experience

Chiara F. Tagliabue^{1,2*†}, Domenica Veniero^{3†}, Christopher S. Y. Benwell⁴, Roberto Cecere³, Silvia Savazzi², Gregor Thut³

¹CIMeC – Center for Mind/Brain Sciences, University of Trento, Rovereto, Italy

²Perception and Awareness (PandA) Laboratory, Department of Neuroscience, Biomedicine and Movement Sciences, University of Verona, Verona, Italy

³Centre for Cognitive Neuroimaging, Institute of Neuroscience and Psychology, University of Glasgow, Glasgow, UK

⁴Psychology, School of Social Sciences, University of Dundee, Dundee, UK

[†]These authors contributed equally to this study

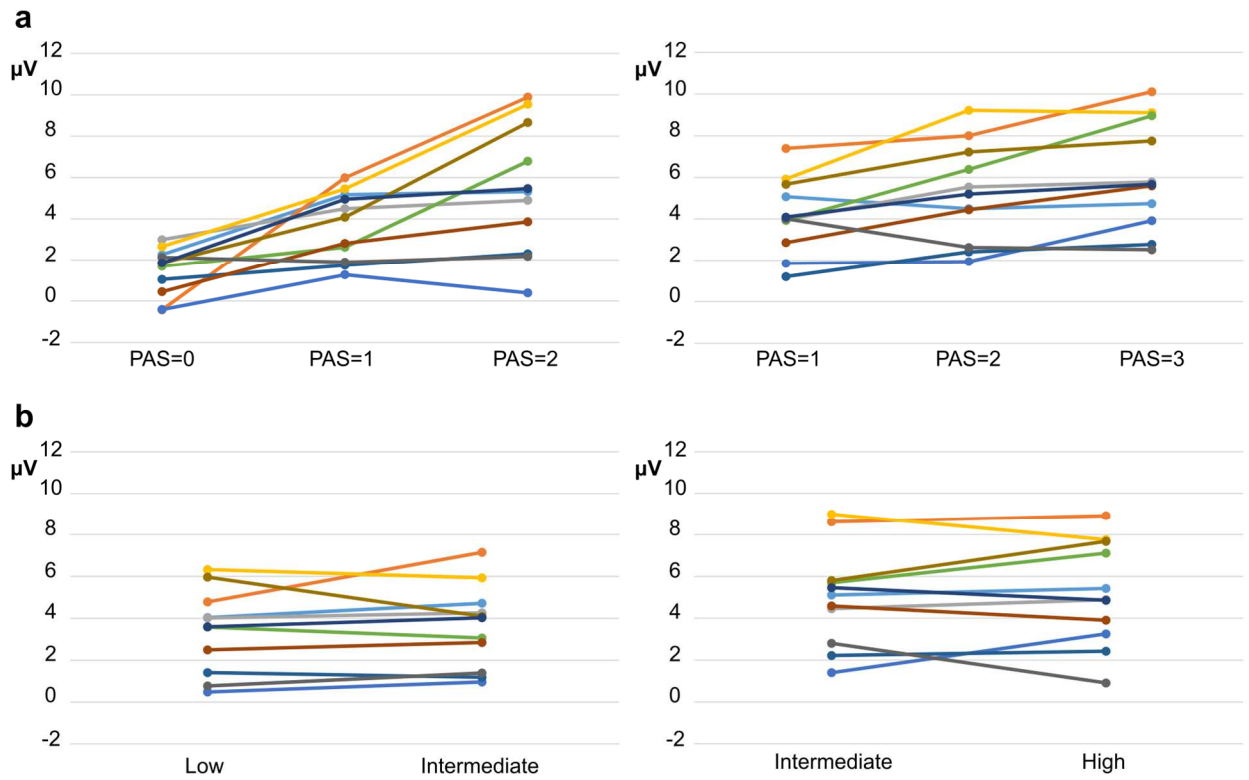
***Corresponding author:**

Chiara F. Tagliabue

CIMeC – Center for Mind/Brain Sciences, University of Trento

Corso Bettini 31, 38068, Rovereto, Italy

chiara.tagliabue@unitn.it



Supplementary Figure 1. ERP Data. Single participant data of the mean amplitude for electrode Pz in a 300-700ms time window for each comparison of **(a)** level of subjective evidence (when controlled for stimulus intensity) and **(b)** level of stimulus intensity (when controlled for PAS ratings). The data reveal high consistency across participants for ERP-modulations across PAS levels, and its absence for ERP modulations across intensity levels.