

**A reference collection of patient-derived cell line and xenograft models of proneural, classical and mesenchymal glioblastoma**

**Brett W Stringer<sup>1,\*</sup>, Bryan W Day<sup>1,\*</sup>, Rochelle C J D'Souza<sup>1</sup>, Paul R Jamieson<sup>1</sup>, Kathleen S Ensbey<sup>1</sup>, Zara C Bruce<sup>1</sup>, Yi Chieh Lim<sup>1</sup>, Kate Goasdoué<sup>1</sup>, Carolin Offenhäuser<sup>1</sup>, Seçkin Akgül<sup>1</sup>, Suzanne Allan<sup>1,2</sup>, Thomas Robertson<sup>2</sup>, Peter Lucas<sup>2</sup>, Gert Tolleson<sup>2</sup>, Scott Campbell<sup>2</sup>, Craig Winter<sup>2</sup>, Hongdo Do<sup>3</sup>, Alexander Dobrovic<sup>3</sup>, Po-Ling Inglis<sup>1,2</sup>, Rosalind L Jeffree<sup>2,4</sup>, Terrance G Johns<sup>5,+</sup>, Andrew W Boyd<sup>1,4,+</sup>**

<sup>1</sup>QIMR Berghofer Medical Research Institute, Brisbane, Australia.

<sup>2</sup>Royal Brisbane and Women's Hospital, Brisbane, Australia.

<sup>3</sup>Olivia Newton-John Cancer and Wellness Centre, Melbourne, Australia.

<sup>4</sup>The University of Queensland, Brisbane, Australia.

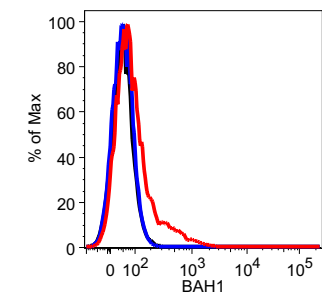
<sup>5</sup>Hudson Institute of Medical Research, Clayton, Victoria, Australia.

\*Joint first authors.

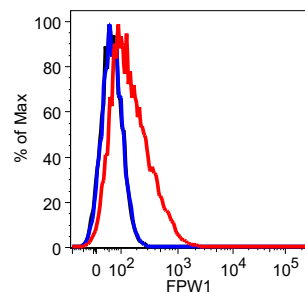
+Joint senior authors.

Correspondence should be addressed to B.W.S. (brett.w.stringer@gmail.com).

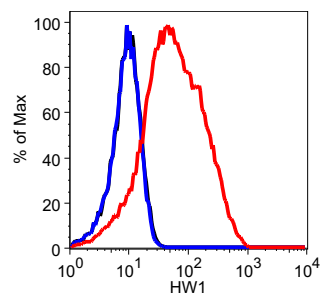
# CD133



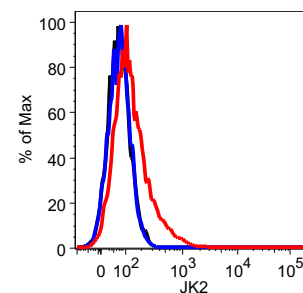
Sample	Mean:PE-A
Unfixed_CD133.fcs	127
Unfixed_IgG1.fcs	46.8
Unfixed_Secondary Only.fcs	47.1



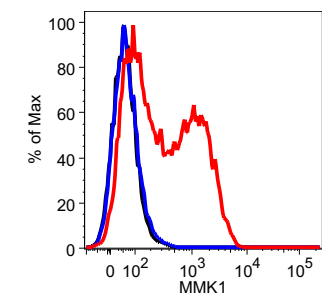
Sample	Mean:PE-A
Unfixed_CD133.fcs	201
Unfixed_IgG1.fcs	62.9
Unfixed_Secondary Only.fcs	61.4



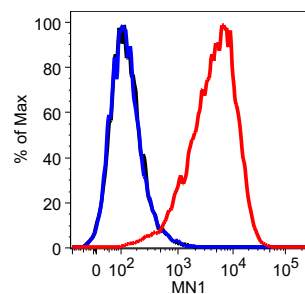
Sample	Mean:PE-A
Unfixed Cells_CD133.fcs	99.2
Unfixed Cells_IgG1.fcs	9.75
Unfixed Cells_Secondary Only.fcs	9.96



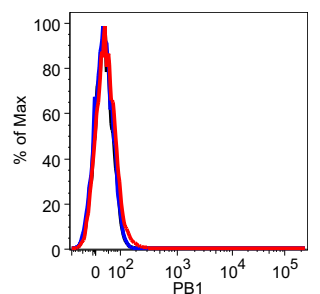
Sample	Mean:PE-A
Unfixed_CD133.fcs	169
Unfixed_IgG1.fcs	73.9
Unfixed_Secondary Only.fcs	73.1



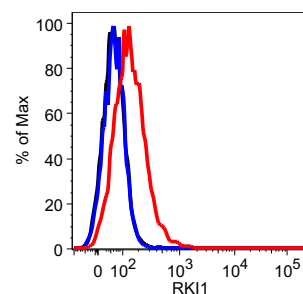
Sample	Mean:PE-A
MMK1_CD133.fcs	697
MMK1_IgG1.fcs	64
MMK1_Secondary Only.fcs	58.2



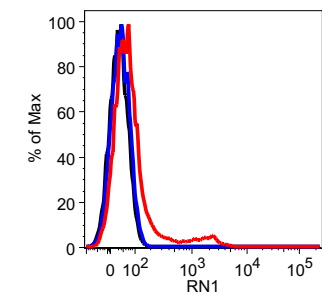
Sample	Mean:PE-A
Unfixed_CD133.fcs	6439
Unfixed_IgG1.fcs	153
Unfixed_Secondary only.fcs	154



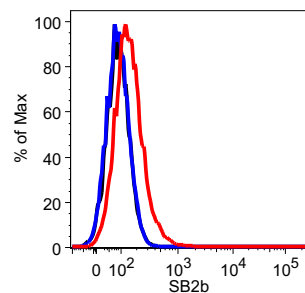
Sample	Mean:PE-A
Unfixed_CD133.fcs	38.4
Unfixed_IgG1.fcs	27.9
Unfixed_Secondary Only.fcs	29



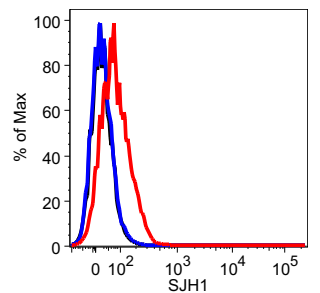
Sample	Mean:PE-A
Unfixed_CD133.fcs	167
Unfixed_IgG1.fcs	63.8
Unfixed_Secondary only.fcs	63.1



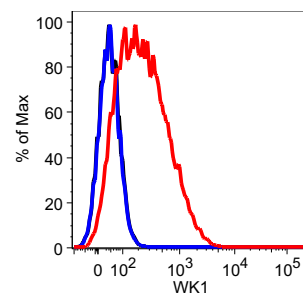
SampleName	Mean:PE-A
Unfixed_CD133.fcs	174
Unfixed_IgG1.fcs	36.7
Unfixed_Secondary only.fcs	30.7



Sample	Mean:PE-A
Unfixed_CD133.fcs	168
Unfixed_IgG1.fcs	89.5
Unfixed_Secondary only.fcs	90.5

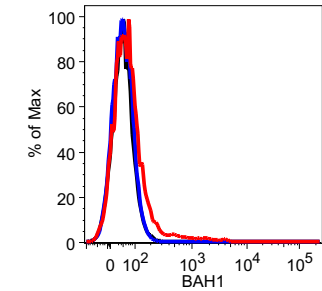


Sample	Mean:PE-A
Unfixed_CD133.fcs	85.6
Unfixed_IgG1.fcs	22.3
Unfixed_Secondary Only.fcs	21.8

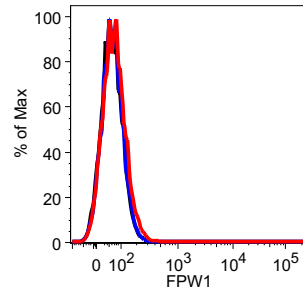


Sample	Mean:PE-A
Unfixed_CD133.fcs	360
Unfixed_IgG1.fcs	42.8
Unfixed_Secondary only.fcs	43.1

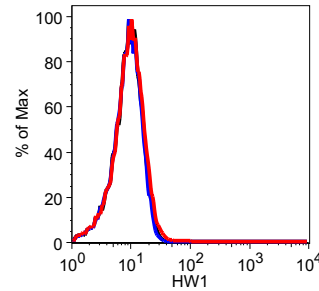
# CD15



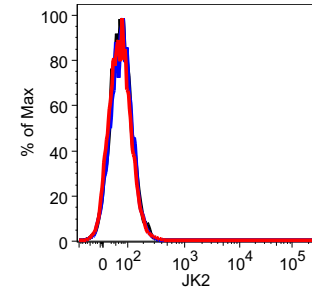
Sample	Mean:PE-A
Unfixed_CD15.fcs	118
Unfixed_IgG1.fcs	46.8
Unfixed_Secondary Only.fcs	47.1



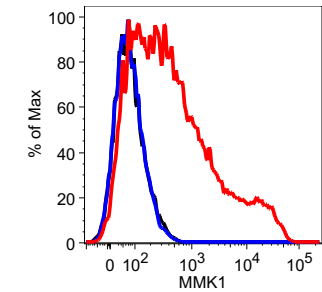
Sample	Mean:PE-A
Unfixed_CD15.fcs	73.2
Unfixed_IgG1.fcs	62.9
Unfixed_Secondary Only.fcs	61.4



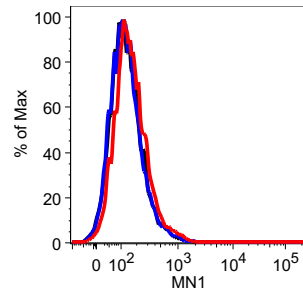
Sample	Mean:PE-A
Unfixed Cells_CD15.fcs	11.6
Unfixed Cells_IgG1.fcs	9.75
Unfixed Cells_Secondary Only.fcs	9.96



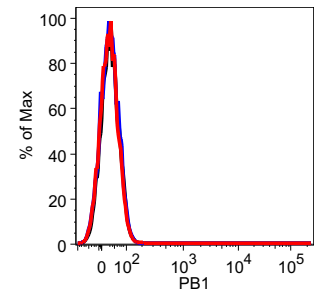
Sample	Mean:PE-A
Unfixed_CD15.fcs	71.3
Unfixed_IgG1.fcs	73.9
Unfixed_Secondary Only.fcs	73.1



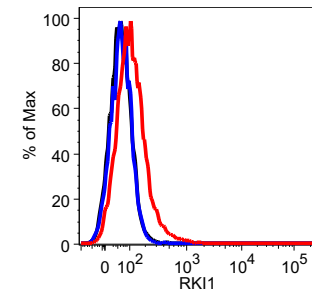
Sample	Mean:PE-A
Unfixed_CD15.fcs	2513
Unfixed_IgG1.fcs	83.6
Unfixed_Secondary only.fcs	85.6



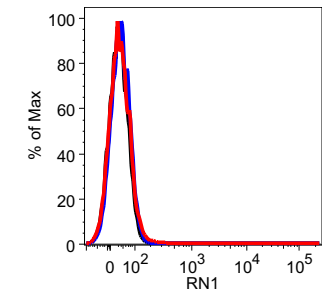
Sample	Mean:PE-A
Unfixed_CD15.fcs	192
Unfixed_IgG1.fcs	153
Unfixed_Secondary only.fcs	154



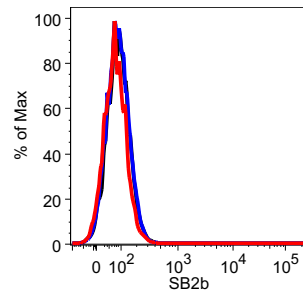
Sample	Mean:PE-A
Unfixed_CD15.fcs	28.2
Unfixed_IgG1.fcs	27.9
Unfixed_Secondary Only.fcs	29



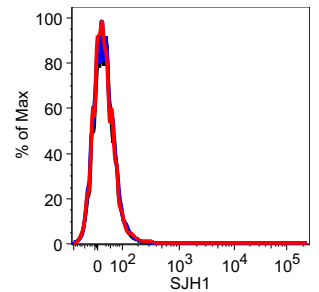
Sample	Mean:PE-A
Unfixed_CD15.fcs	138
Unfixed_IgG1.fcs	63.8
Unfixed_Secondary only.fcs	63.1



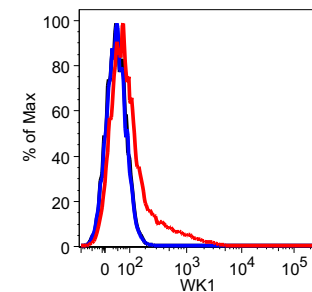
Sample	Mean:PE-A
Unfixed_CD15.fcs	36.2
Unfixed_IgG1.fcs	36.7
Unfixed_Secondary only.fcs	30.7



Sample	Mean:PE-A
Unfixed_CD15.fcs	78.9
Unfixed_IgG1.fcs	89.5
Unfixed_Secondary only.fcs	90.5

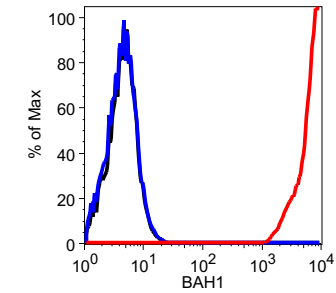


Sample	Mean:PE-A
Unfixed_CD15.fcs	25.6
Unfixed_IgG1.fcs	22.3
Unfixed_Secondary Only.fcs	21.8

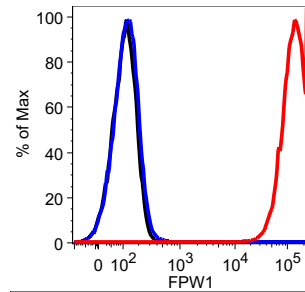


Sample	Mean:PE-A
Unfixed_CD15.fcs	170
Unfixed_IgG1.fcs	42.8
Unfixed_Secondary only.fcs	43.1

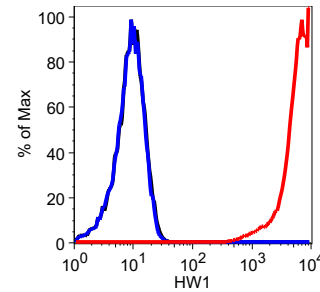
# CD44



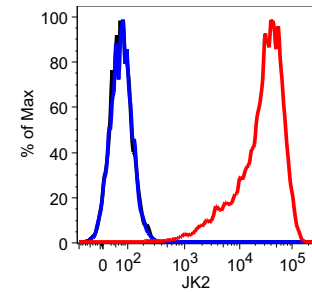
Sample	Mean:PE-A
Unfixed Cells_CD44.fcs	7923
Unfixed Cells_IgG1.fcs	4.87
Unfixed Cells_Secondary Only.fcs	4.99



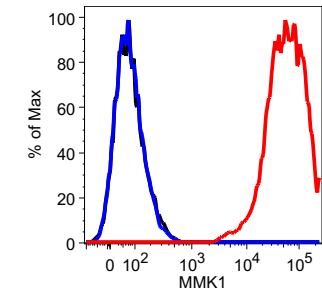
Sample	Mean: PE-A
Unfixed Cells_CD44.fcs	1.51e5
Unfixed Cells_IgG1.fcs	123
Unfixed Cells_Secondary Only.fcs	113



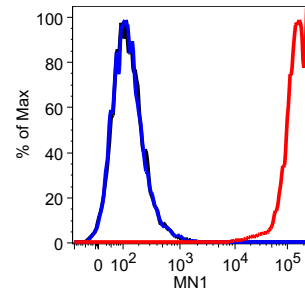
Sample	Mean:PE-A
Unfixed Cells_CD44.fcs	6774
Unfixed Cells_IgG1.fcs	9.75
Unfixed Cells_Secondary Only.fcs	9.96



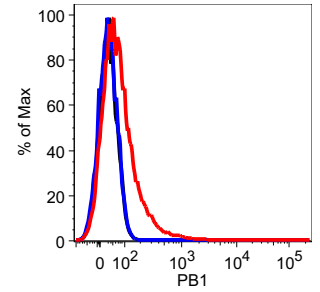
Sample	Mean:PE-A
Unfixed_CD44.fcs	37588
Unfixed_IgG1.fcs	73.9
Unfixed_Secondary Only.fcs	73.1



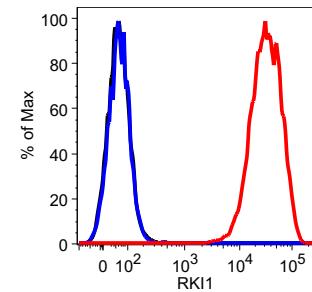
Sample	Mean:PE-A
Unfixed_CD44.fcs	76428
Unfixed_IgG1.fcs	83.6
Unfixed_Secondary only.fcs	85.6



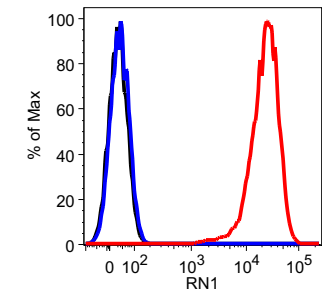
Sample	Mean:PE-A
Unfixed_CD44.fcs	1.68e5
Unfixed_IgG1.fcs	153
Unfixed_Secondary only.fcs	154



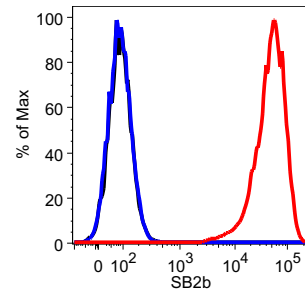
Sample	Mean:PE-A
Unfixed_CD44.fcs	99.1
Unfixed_IgG1.fcs	27.9
Unfixed_Secondary Only.fcs	29



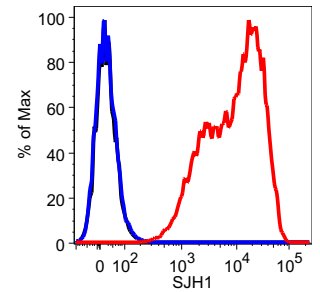
Sample	Mean:PE-A
Unfixed_CD44.fcs	40186
Unfixed_IgG1.fcs	63.8
Unfixed_Secondary only.fcs	63.1



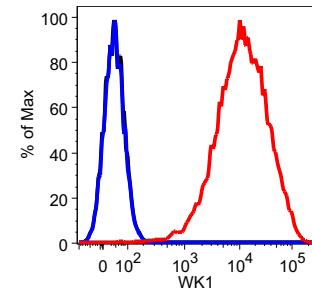
SampleName	Mean:PE-A
Unfixed_CD44.fcs	27077
Unfixed_IgG1.fcs	36.7
Unfixed_Secondary only.fcs	30.7



Sample	Mean:PE-A
Unfixed_CD44.fcs	57808
Unfixed_IgG1.fcs	89.5
Unfixed_Secondary only.fcs	90.5

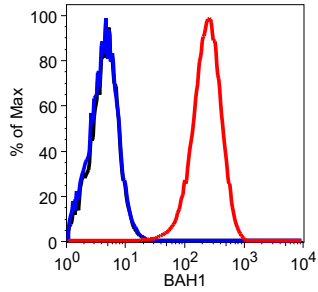


Sample	Mean:PE-A
Unfixed_CD44.fcs	15563
Unfixed_IgG1.fcs	22.3
Unfixed_Secondary Only.fcs	21.8

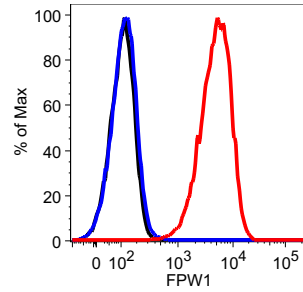


Sample	Mean:PE-A
Unfixed_CD44.fcs	19550
Unfixed_IgG1.fcs	42.8
Unfixed_Secondary only.fcs	43.1

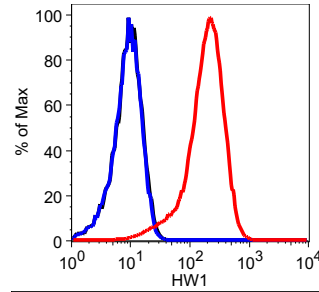
# CD49f



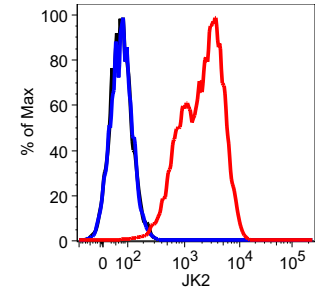
Sample	Mean:PE-A
Unfixed Cells_CD49f.fcs	272
Unfixed Cells_IgG1.fcs	4.87
Unfixed Cells_Secondary Only.fcs	4.99



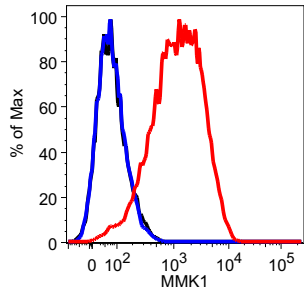
Sample	Mean: PE-A
Unfixed Cells_CD49f.fcs	5794
Unfixed Cells_IgG1.fcs	123
Unfixed Cells_Secondary Only.fcs	113



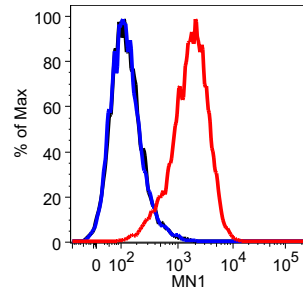
Sample	Mean:PE-A
Unfixed Cells_CD49f.fcs	226
Unfixed Cells_IgG1.fcs	9.75
Unfixed Cells_Secondary Only.fcs	9.96



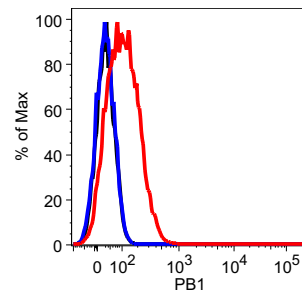
Sample	Mean:PE-A
Unfixed_CD49f.fcs	2770
Unfixed_IgG1.fcs	73.9
Unfixed_Secondary Only.fcs	73.1



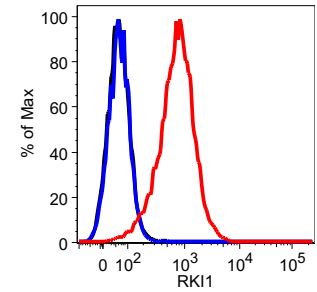
Sample	Mean:PE-A
Unfixed_CD49f.fcs	1835
Unfixed_IgG1.fcs	83.6
Unfixed_Secondary only.fcs	85.6



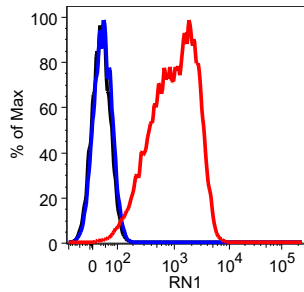
Sample	Mean:PE-A
Unfixed_CD49f.fcs	2127
Unfixed_IgG1.fcs	153
Unfixed_Secondary only.fcs	154



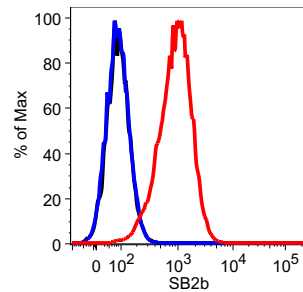
Sample	Mean:PE-A
Unfixed_CD49f.fcs	119
Unfixed_IgG1.fcs	27.9
Unfixed_Secondary Only.fcs	29



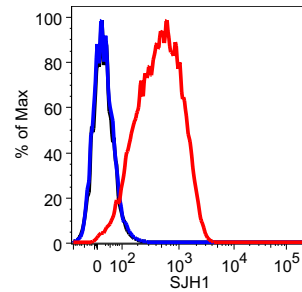
Sample	Mean:PE-A
Unfixed_CD49f.fcs	906
Unfixed_IgG1.fcs	63.8
Unfixed_Secondary only.fcs	63.1



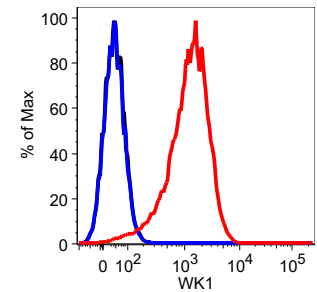
SampleName	Mean:PE-A
Unfixed_CD49f.fcs	1393
Unfixed_IgG1.fcs	36.7
Unfixed_Secondary only.fcs	30.7



Sample	Mean:PE-A
Unfixed_CD49f.fcs	1083
Unfixed_IgG1.fcs	89.5
Unfixed_Secondary only.fcs	90.5

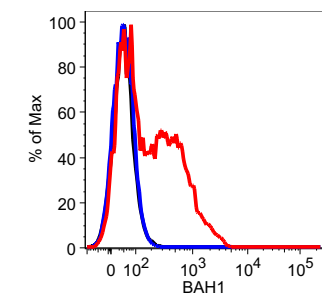


Sample	Mean:PE-A
Unfixed_CD49f.fcs	627
Unfixed_IgG1.fcs	22.3
Unfixed_Secondary Only.fcs	21.8

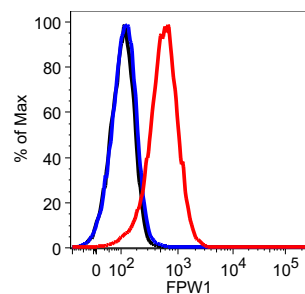


Sample	Mean:PE-A
Unfixed_CD49f.fcs	1544
Unfixed_IgG1.fcs	42.8
Unfixed_Secondary only.fcs	43.1

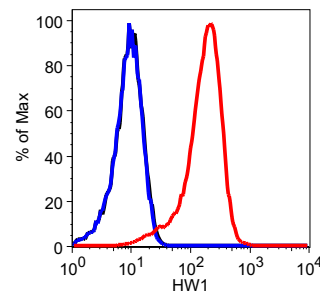
# EGFR



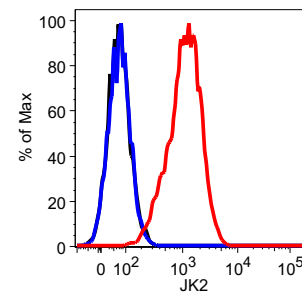
Sample	Mean:PE-A
Unfixed_EGFR.fcs	334
Unfixed_IgG1.fcs	46.8
Unfixed_Secondary Only.fcs	47.1



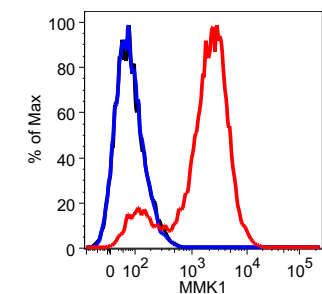
Sample	Mean: PE-A
Unfixed Cells_EGFR.fcs	645
Unfixed Cells_IgG1.fcs	123
Unfixed Cells_Secondary Only.fcs	113



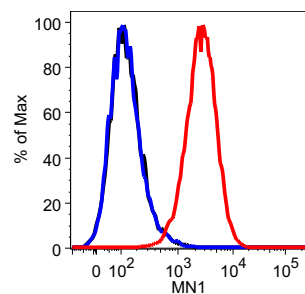
Sample	Mean:PE-A
Unfixed Cells_EGFR.fcs	203
Unfixed Cells_IgG1.fcs	9.75
Unfixed Cells_Secondary Only.fcs	9.96



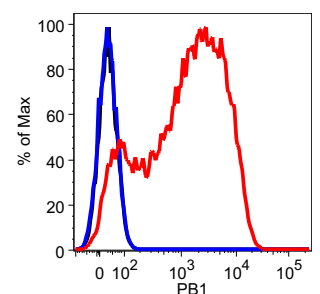
Sample	Mean:PE-A
Unfixed_EGFR.fcs	1319
Unfixed_IgG1.fcs	73.9
Unfixed_Secondary Only.fcs	73.1



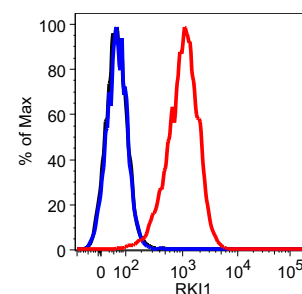
Sample	Mean:PE-A
Unfixed_EGFR.fcs	2465
Unfixed_IgG1.fcs	83.6
Unfixed_Secondary only.fcs	85.6



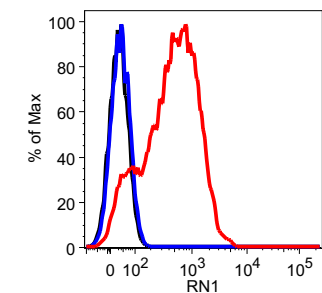
Sample	Mean:PE-A
Unfixed_EGFR.fcs	3179
Unfixed_IgG1.fcs	153
Unfixed_Secondary only.fcs	154



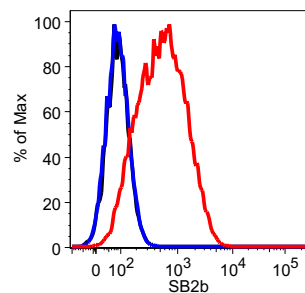
Sample	Mean:PE-A
Unfixed_EGFR.fcs	2899
Unfixed_IgG1.fcs	27.9
Unfixed_Secondary Only.fcs	29



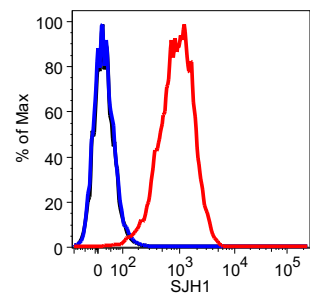
Sample	Mean:PE-A
Unfixed_EGFR.fcs	1207
Unfixed_IgG1.fcs	63.8
Unfixed_Secondary only.fcs	63.1



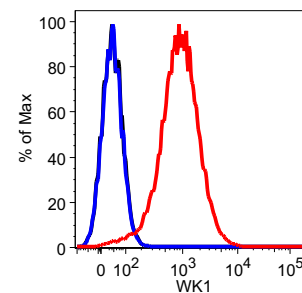
SampleName	Mean:PE-A
Unfixed_EGFR.fcs	679
Unfixed_IgG1.fcs	36.7
Unfixed_Secondary only.fcs	30.7



Sample	Mean:PE-A
Unfixed_EGFR.fcs	800
Unfixed_IgG1.fcs	89.5
Unfixed_Secondary only.fcs	90.5

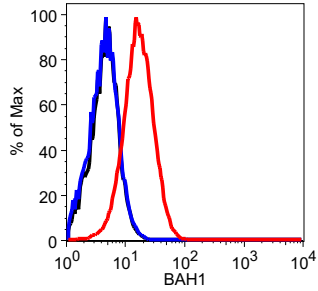


Sample	Mean:PE-A
Unfixed_EGFR.fcs	1091
Unfixed_IgG1.fcs	22.3
Unfixed_Secondary Only.fcs	21.8

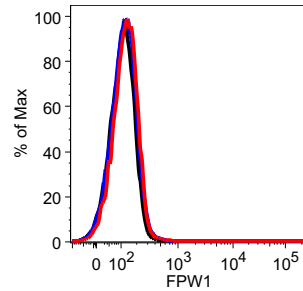


Sample	Mean:PE-A
Unfixed_EGFR.fcs	1181
Unfixed_IgG1.fcs	42.8
Unfixed_Secondary only.fcs	43.1

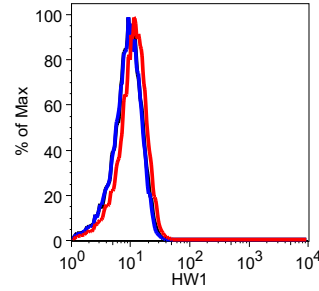
# EGFRvIII



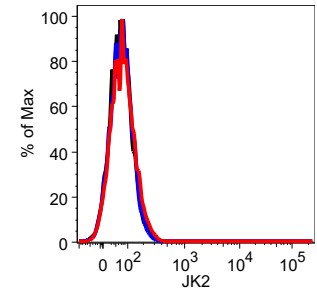
Sample	Mean:PE-A
Unfixed Cells_EGFRvIII.fcs	19.2
Unfixed Cells_IgG1.fcs	4.87
Unfixed Cells_Secondary Only.fcs	4.99



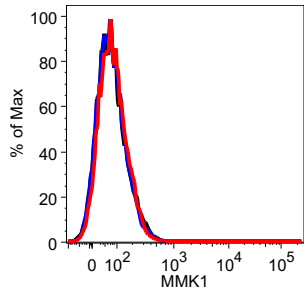
Sample	Mean: PE-A
Unfixed Cells_EGFRvIII.fcs	137
Unfixed Cells_IgG1.fcs	123
Unfixed Cells_Secondary Only.fcs	113



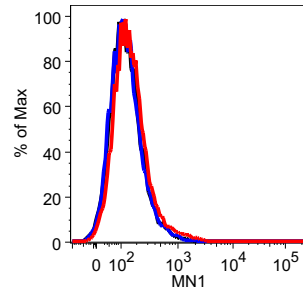
Sample	Mean:PE-A
Unfixed Cells_EGFRvIII.fcs	12.1
Unfixed Cells_IgG1.fcs	9.75
Unfixed Cells_Secondary Only.fcs	9.96



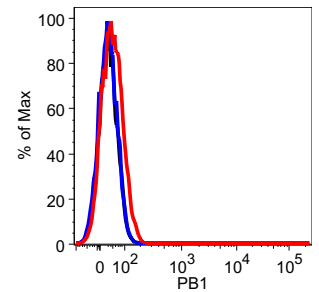
Sample	Mean:PE-A
Unfixed Cells_EGFRvIII.fcs	81.3
Unfixed Cells_IgG1.fcs	73.9
Unfixed Cells_Secondary Only.fcs	73.1



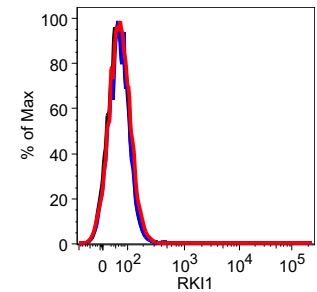
Sample	Mean:PE-A
Unfixed Cells_EGFRvIII.fcs	88.5
Unfixed Cells_IgG1.fcs	83.6
Unfixed Cells_Secondary only.fcs	85.6



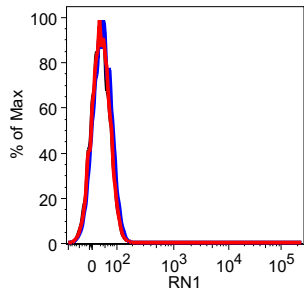
Sample	Mean:PE-A
Unfixed Cells_EGFRvIII.fcs	201
Unfixed Cells_IgG1.fcs	153
Unfixed Cells_Secondary only.fcs	154



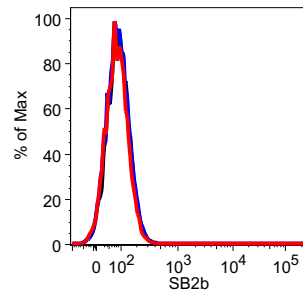
Sample	Mean:PE-A
Unfixed Cells_EGFRvIII.fcs	46.3
Unfixed Cells_IgG1.fcs	27.9
Unfixed Cells_Secondary Only.fcs	29



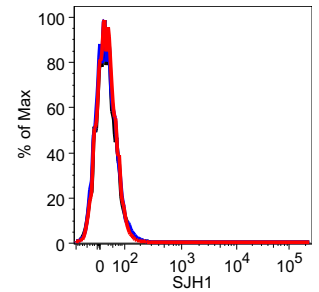
Sample	Mean:PE-A
Unfixed Cells_EGFRvIII.fcs	69.1
Unfixed Cells_IgG1.fcs	63.8
Unfixed Cells_Secondary only.fcs	63.1



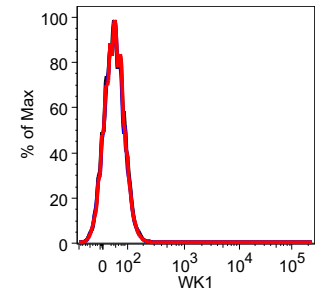
SampleName	Mean:PE-A
Unfixed Cells_EGFRvIII.fcs	30.6
Unfixed Cells_IgG1.fcs	36.7
Unfixed Cells_Secondary only.fcs	30.7



Sample	Mean:PE-A
Unfixed Cells_EGFRvIII.fcs	84.7
Unfixed Cells_IgG1.fcs	89.5
Unfixed Cells_Secondary only.fcs	90.5

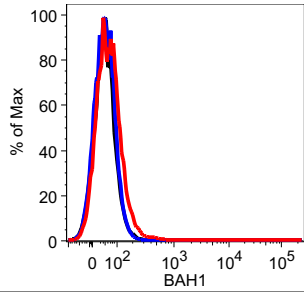


Sample	Mean:PE-A
Unfixed Cells_EGFRvIII.fcs	22.2
Unfixed Cells_IgG1.fcs	22.3
Unfixed Cells_Secondary Only.fcs	21.8

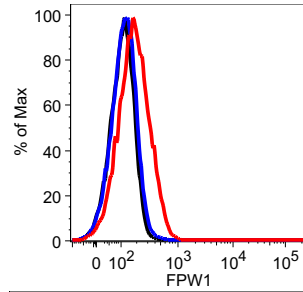


Sample	Mean:PE-A
Unfixed Cells_EGFRvIII.fcs	42.8
Unfixed Cells_IgG1.fcs	42.8
Unfixed Cells_Secondary only.fcs	43.1

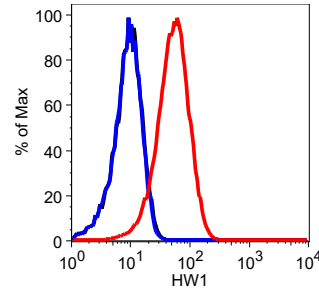
# PDGFRa



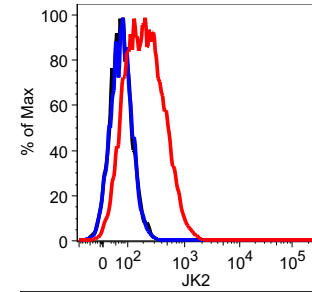
Sample	Mean:PE-A
Unfixed_PDGFRA.fcs	69.3
Unfixed_IgG1.fcs	46.8
Unfixed_Secondary Only.fcs	47.1



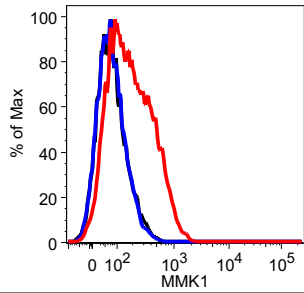
Sample	Mean: PE-A
Unfixed_Cells_PDGFRA.fcs	203
Unfixed_Cells_IgG1.fcs	123
Unfixed_Cells_Secondary Only.fcs	113



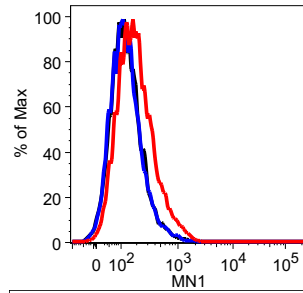
Sample	Mean:PE-A
Unfixed_Cells_PDGFRA.fcs	61.2
Unfixed_Cells_IgG1.fcs	9.75
Unfixed_Cells_Secondary Only.fcs	9.96



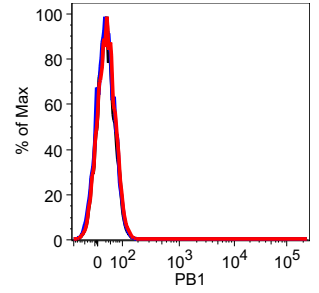
Sample	Mean:PE-A
Unfixed_PDGFRA.fcs	262
Unfixed_IgG1.fcs	73.9
Unfixed_Secondary Only.fcs	73.1



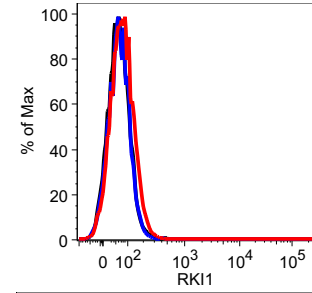
Sample	Mean:PE-A
Unfixed_PDGFRA.fcs	250
Unfixed_IgG1.fcs	83.6
Unfixed_Secondary only.fcs	85.6



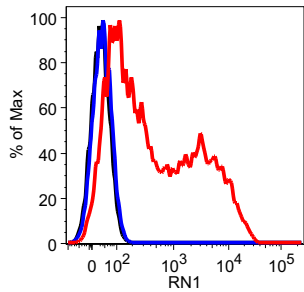
Sample	Mean:PE-A
Unfixed_PDGFRA.fcs	243
Unfixed_IgG1.fcs	153
Unfixed_Secondary only.fcs	154



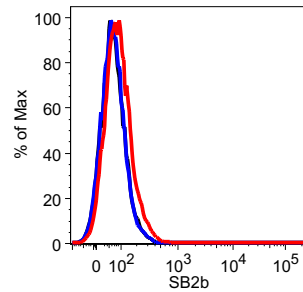
Sample	Mean:PE-A
Unfixed_PDGFRA.fcs	31.3
Unfixed_IgG1.fcs	27.9
Unfixed_Secondary Only.fcs	29



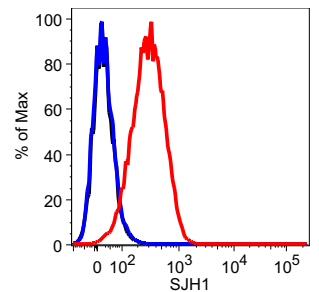
Sample	Mean:PE-A
Unfixed_PDGFRA_01.fcs	79.2
Unfixed_IgG1.fcs	63.8
Unfixed_Secondary only.fcs	63.1



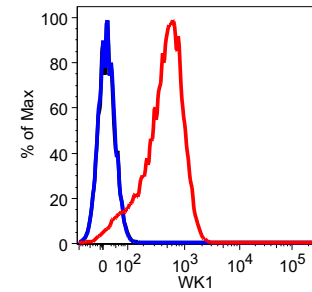
SampleName	Mean:PE-A
Unfixed_PDGFRA.fcs	2038
Unfixed_IgG1.fcs	36.7
Unfixed_Secondary only.fcs	30.7



Sample	Mean:PE-A
SB2b_PDGFRA.fcs	95.3
SB2b_IgG1.fcs	68.2
SB2b_Secondary Only.fcs	68.8



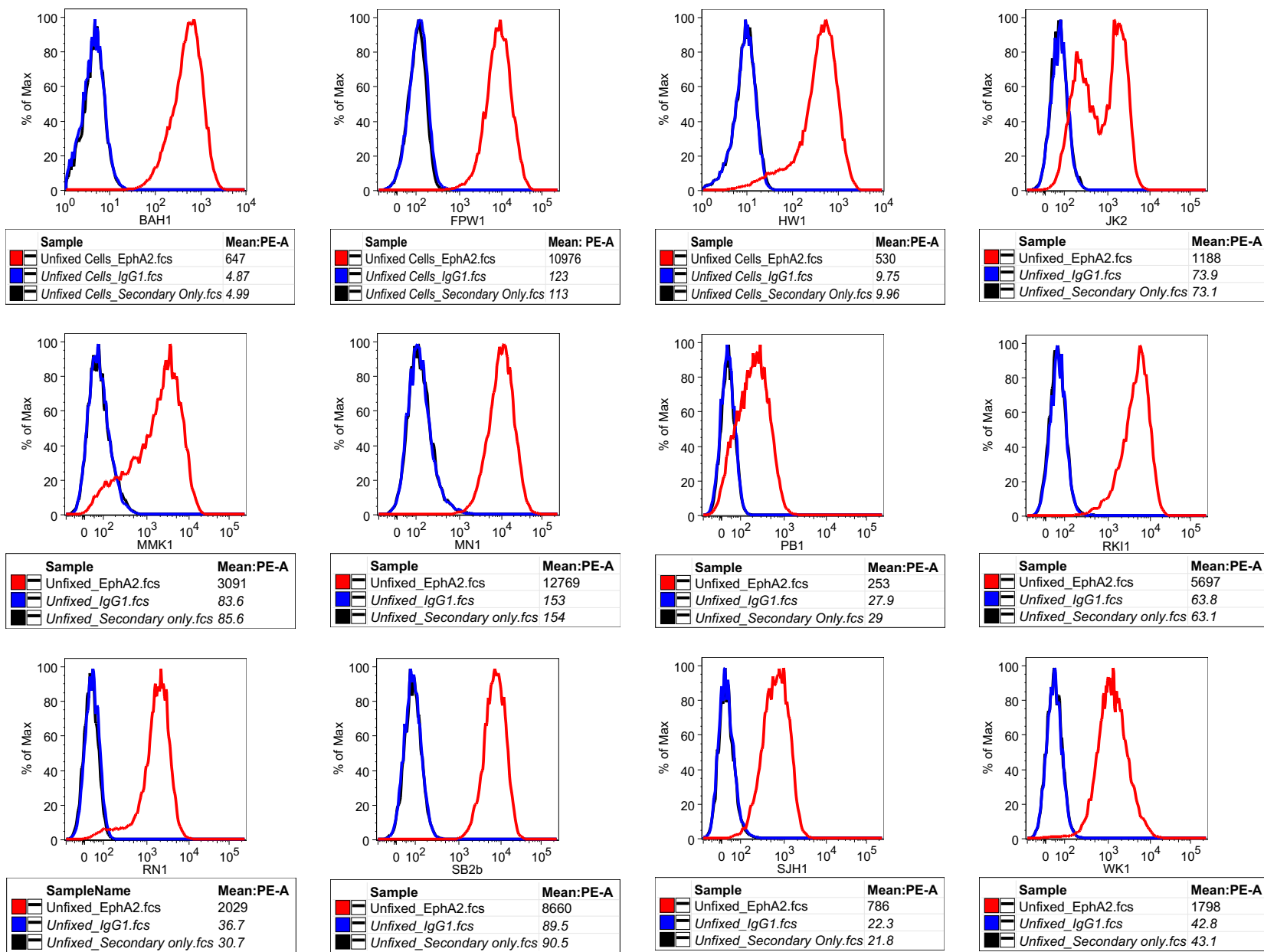
Sample	Mean:PE-A
Unfixed_PDGFRA.fcs	351
Unfixed_IgG1.fcs	22.3
Unfixed_Secondary Only.fcs	21.8



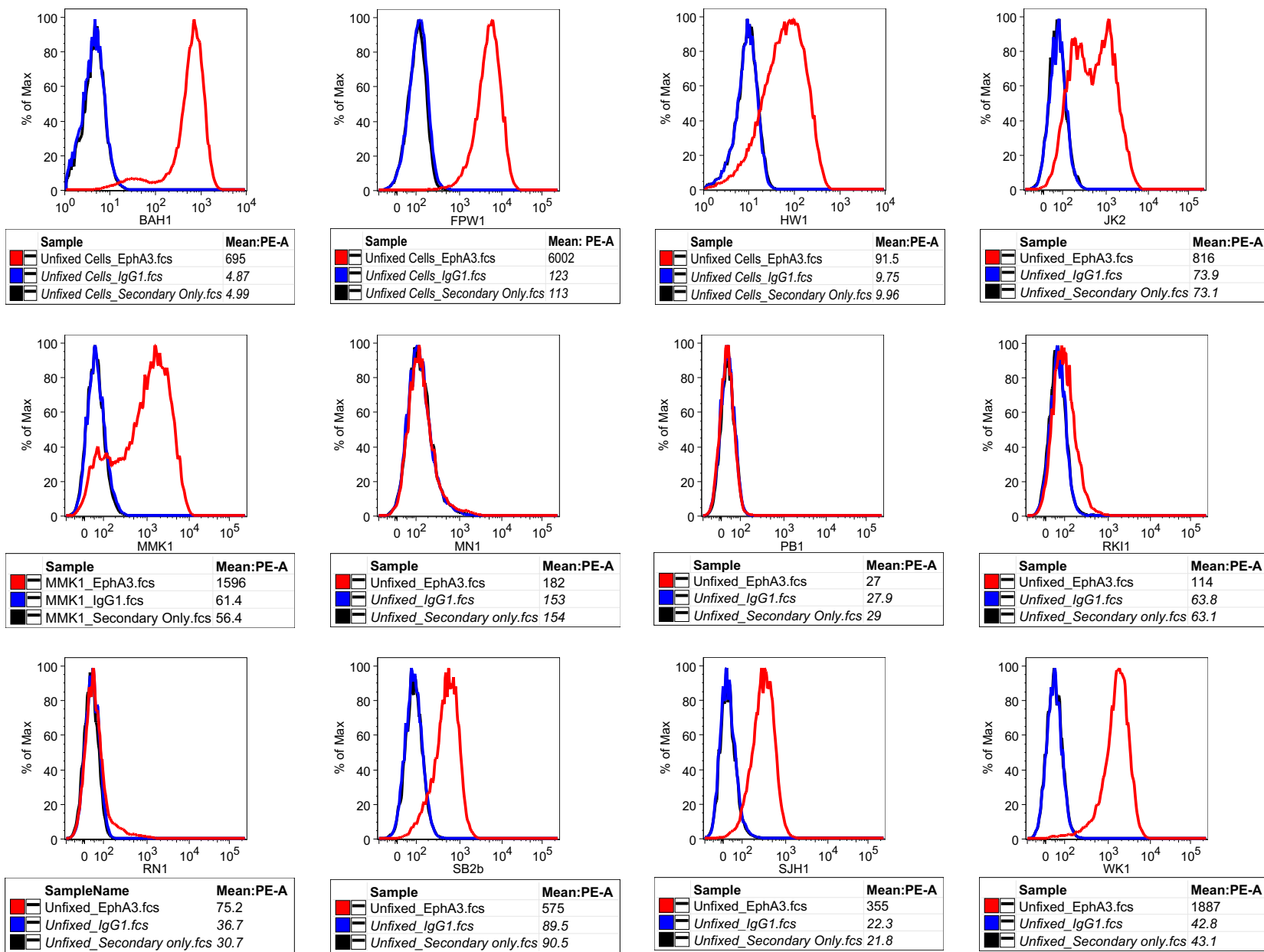
Sample	Mean:PE-A
WK1_PDGFRA.fcs	538
WK1_IgG1.fcs	11.9
WK1_Secondary Only.fcs	12.2



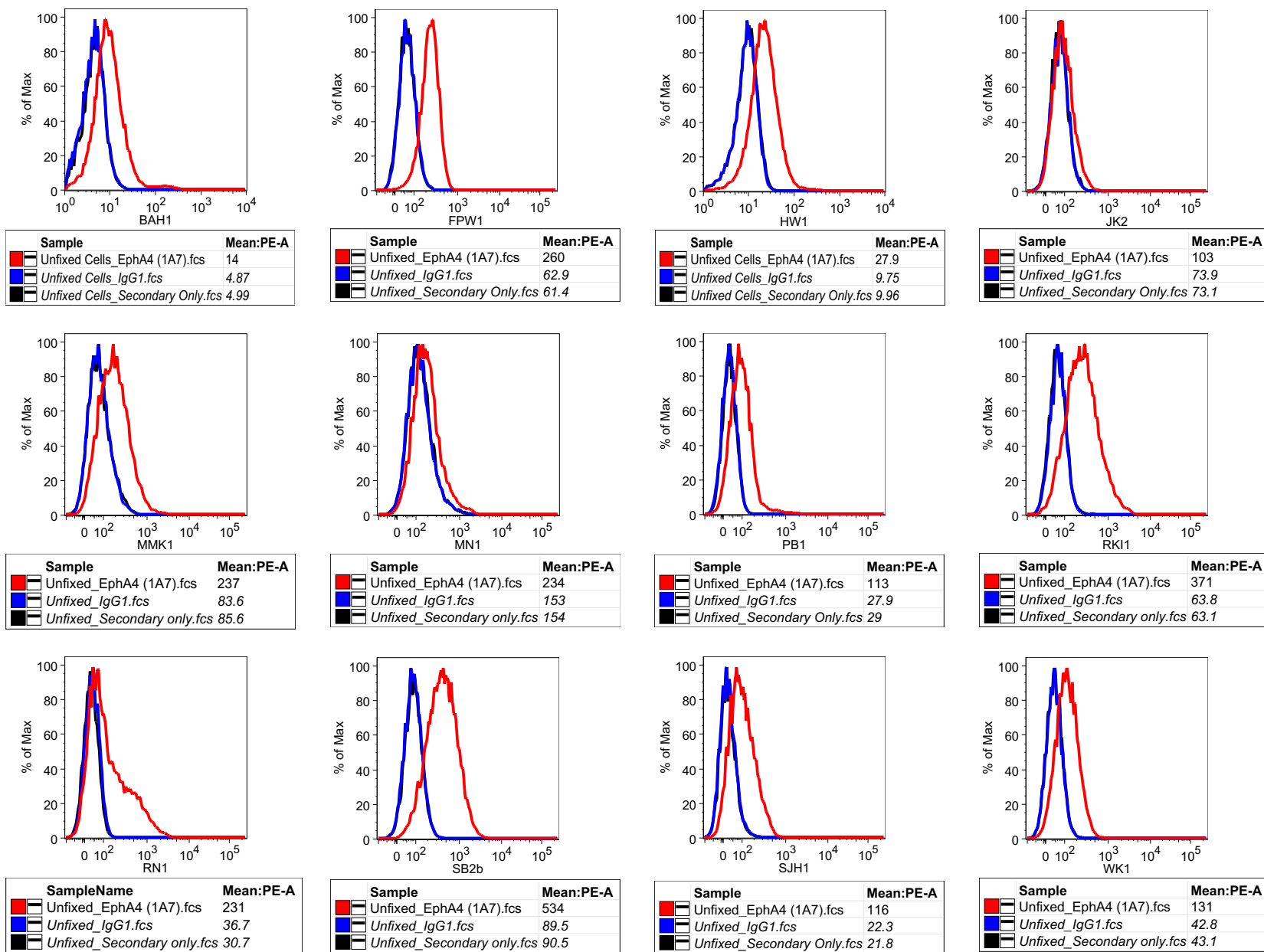
# EphA2



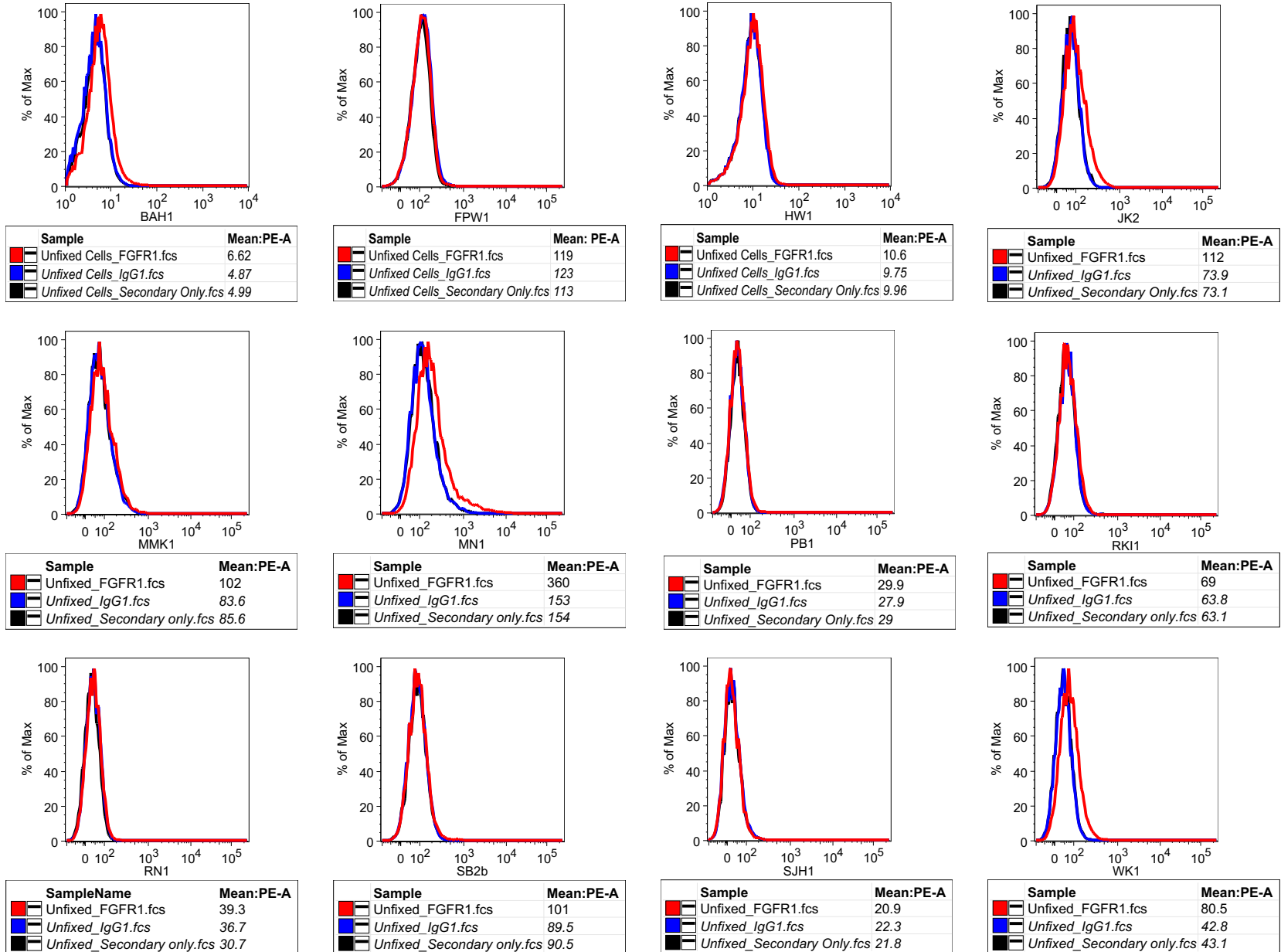
# EphA3



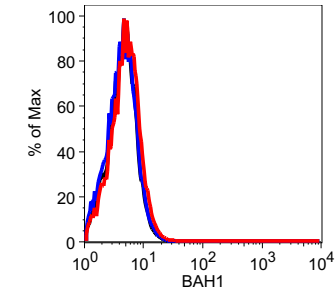
# EphA4



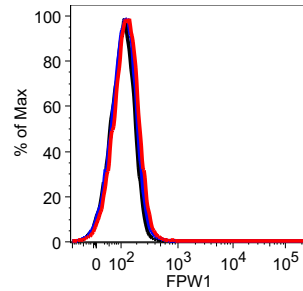
# FGFR1



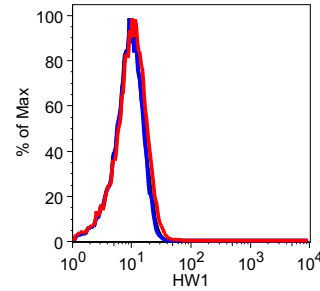
# FGFR2



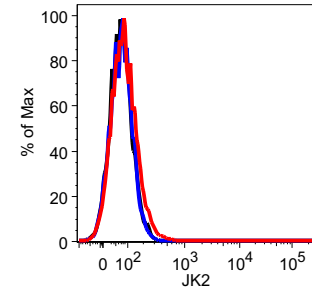
Sample	Mean:PE-A
Unfixed Cells_FGFR2.fcs	5.6
Unfixed Cells_IgG1.fcs	4.87
Unfixed Cells_Secondary Only.fcs	4.99



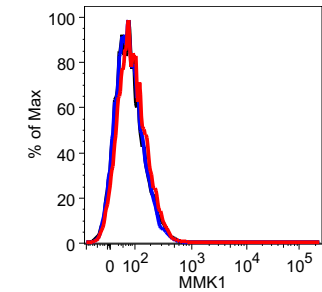
Sample	Mean: PE-A
Unfixed Cells_FGFR2.fcs	138
Unfixed Cells_IgG1.fcs	123
Unfixed Cells_Secondary Only.fcs	113



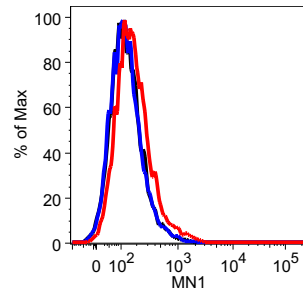
Sample	Mean:PE-A
Unfixed Cells_FGFR2.fcs	11.3
Unfixed Cells_IgG1.fcs	9.75
Unfixed Cells_Secondary Only.fcs	9.96



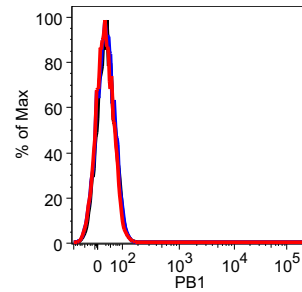
Sample	Mean:PE-A
Unfixed Cells_FGFR2.fcs	93.3
Unfixed Cells_IgG1.fcs	73.9
Unfixed Cells_Secondary Only.fcs	73.1



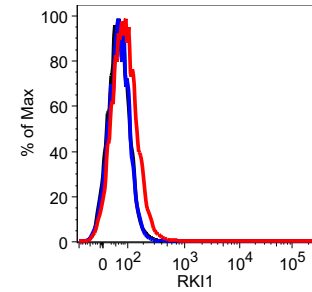
Sample	Mean:PE-A
Unfixed Cells_FGFR2.fcs	99.2
Unfixed Cells_IgG1.fcs	83.6
Unfixed Cells_Secondary only.fcs	85.6



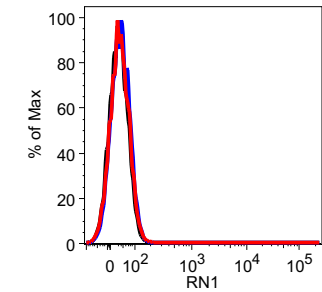
Sample	Mean:PE-A
Unfixed Cells_FGFR2.fcs	234
Unfixed Cells_IgG1.fcs	153
Unfixed Cells_Secondary only.fcs	154



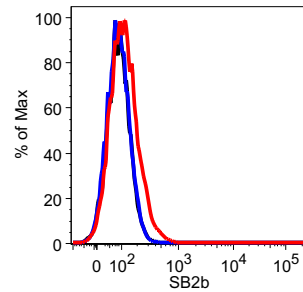
Sample	Mean:PE-A
Unfixed Cells_FGFR2.fcs	25.7
Unfixed Cells_IgG1.fcs	27.9
Unfixed Cells_Secondary Only.fcs	29



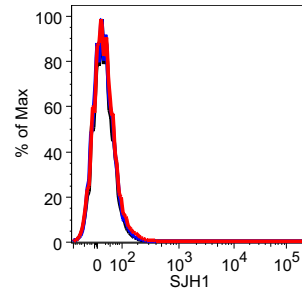
Sample	Mean:PE-A
Unfixed Cells_FGFR2.fcs	92.6
Unfixed Cells_IgG1.fcs	63.8
Unfixed Cells_Secondary only.fcs	63.1



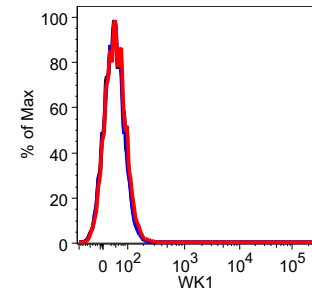
Sample	Mean:PE-A
Unfixed Cells_FGFR2.fcs	34.6
Unfixed Cells_IgG1.fcs	36.7
Unfixed Cells_Secondary only.fcs	30.7



Sample	Mean:PE-A
Unfixed Cells_FGFR2.fcs	129
Unfixed Cells_IgG1.fcs	89.5
Unfixed Cells_Secondary only.fcs	90.5

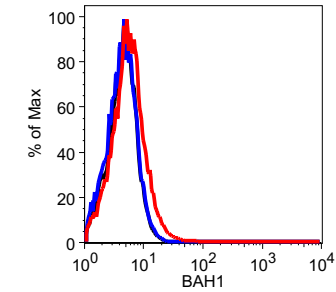


Sample	Mean:PE-A
Unfixed Cells_FGFR2.fcs	26.7
Unfixed Cells_IgG1.fcs	22.3
Unfixed Cells_Secondary Only.fcs	21.8

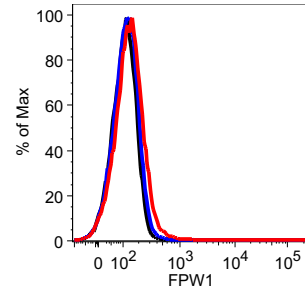


Sample	Mean:PE-A
Unfixed Cells_FGFR2.fcs	48.1
Unfixed Cells_IgG1.fcs	42.8
Unfixed Cells_Secondary only.fcs	43.1

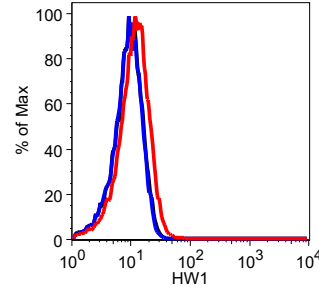
# FGFR3



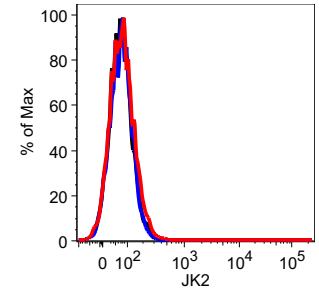
Sample	Mean:PE-A
Unfixed Cells_FGFR3.fcs	6.8
Unfixed Cells_IgG1.fcs	4.87
Unfixed Cells_Secondary Only.fcs	4.99



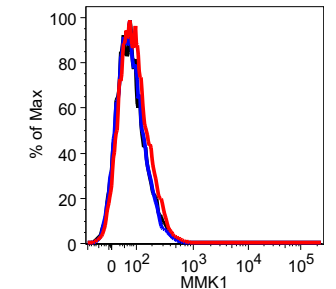
Sample	Mean: PE-A
Unfixed Cells_FGFR3.fcs	158
Unfixed Cells_IgG1.fcs	123
Unfixed Cells_Secondary Only.fcs	113



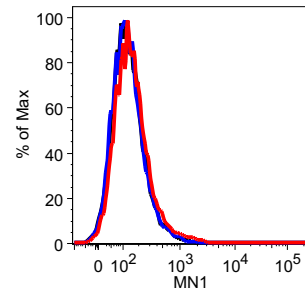
Sample	Mean:PE-A
Unfixed Cells_FGFR3.fcs	13.3
Unfixed Cells_IgG1.fcs	9.75
Unfixed Cells_Secondary Only.fcs	9.96



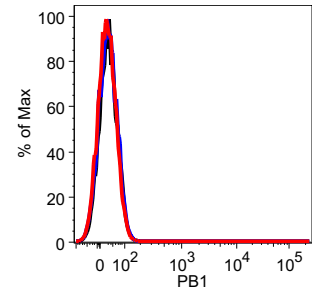
Sample	Mean:PE-A
Unfixed Cells_FGFR3.fcs	82.7
Unfixed Cells_IgG1.fcs	73.9
Unfixed Cells_Secondary Only.fcs	73.1



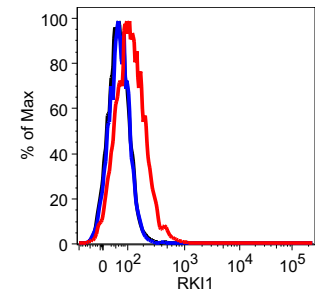
Sample	Mean:PE-A
Unfixed Cells_FGFR3.fcs	103
Unfixed Cells_IgG1.fcs	83.6
Unfixed Cells_Secondary only.fcs	85.6



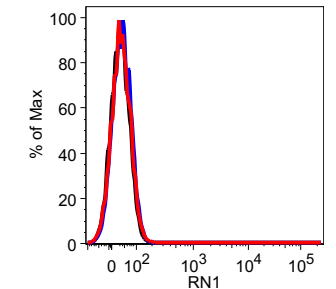
Sample	Mean:PE-A
Unfixed Cells_FGFR3.fcs	203
Unfixed Cells_IgG1.fcs	153
Unfixed Cells_Secondary only.fcs	154



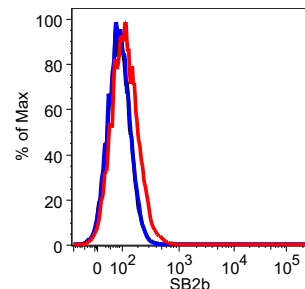
Sample	Mean:PE-A
Unfixed Cells_FGFR3.fcs	25.1
Unfixed Cells_IgG1.fcs	27.9
Unfixed Cells_Secondary Only.fcs	29



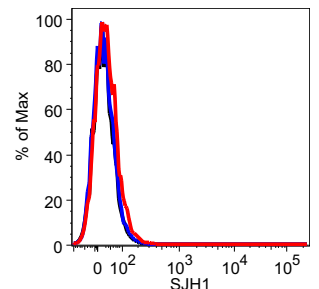
Sample	Mean:PE-A
Unfixed Cells_FGFR3_01.fcs	132
Unfixed Cells_IgG1.fcs	63.8
Unfixed Cells_Secondary only.fcs	63.1



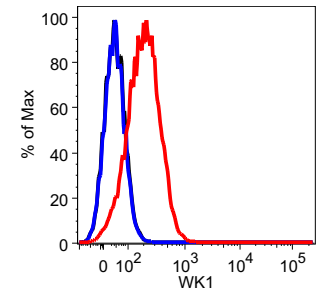
SampleName	Mean:PE-A
Unfixed Cells_FGFR3.fcs	34.6
Unfixed Cells_IgG1.fcs	36.7
Unfixed Cells_Secondary only.fcs	30.7



Sample	Mean:PE-A
Unfixed Cells_FGFR3.fcs	126
Unfixed Cells_IgG1.fcs	89.5
Unfixed Cells_Secondary only.fcs	90.5

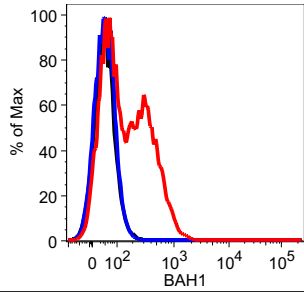


Sample	Mean:PE-A
Unfixed Cells_FGFR3.fcs	33.8
Unfixed Cells_IgG1.fcs	22.3
Unfixed Cells_Secondary Only.fcs	21.8

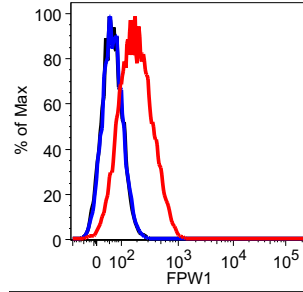


Sample	Mean:PE-A
Unfixed Cells_FGFR3.fcs	228
Unfixed Cells_IgG1.fcs	42.8
Unfixed Cells_Secondary only.fcs	43.1

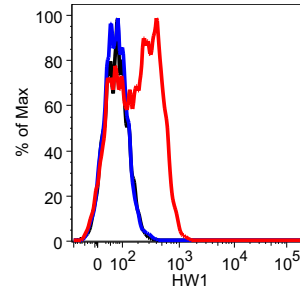
# c-MET



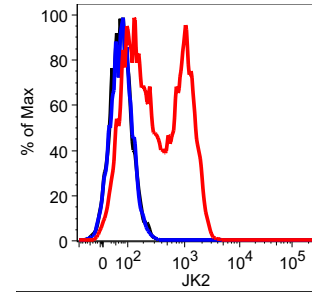
Sample	Mean:PE-A
Unfixed_c-MET.fcs	216
Unfixed_IgG1.fcs	46.8
Unfixed_Secondary Only.fcs	47.1



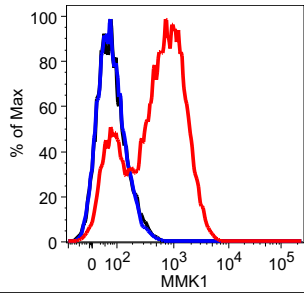
Sample	Mean:PE-A
Unfixed_c-MET.fcs	223
Unfixed_IgG1.fcs	62.9
Unfixed_Secondary Only.fcs	61.4



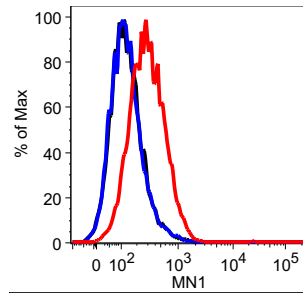
Sample	Mean:PE-A
Unfixed_c-MET.fcs	242
Unfixed_IgG1.fcs	73.6
Unfixed_Secondary Only.fcs	75.1



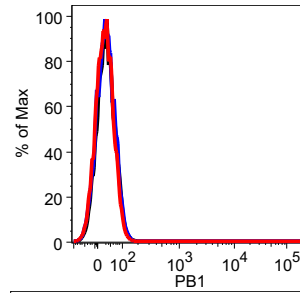
Sample	Mean:PE-A
Unfixed_c-MET.fcs	543
Unfixed_IgG1.fcs	73.9
Unfixed_Secondary Only.fcs	73.1



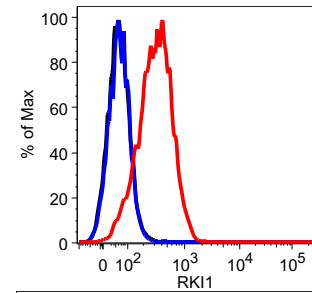
Sample	Mean:PE-A
Unfixed_c-MET.fcs	791
Unfixed_IgG1.fcs	83.6
Unfixed_Secondary only.fcs	85.6



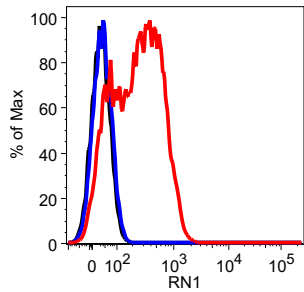
Sample	Mean:PE-A
Unfixed_c-MET.fcs	404
Unfixed_IgG1.fcs	153
Unfixed_Secondary only.fcs	154



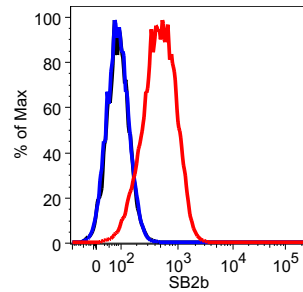
Sample	Mean:PE-A
Unfixed_c-MET.fcs	24.5
Unfixed_IgG1.fcs	27.9
Unfixed_Secondary Only.fcs	29



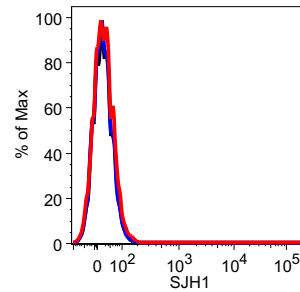
Sample	Mean:PE-A
Unfixed_c-MET.fcs	375
Unfixed_IgG1.fcs	63.8
Unfixed_Secondary only.fcs	63.1



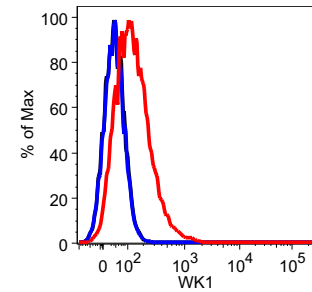
SampleName	Mean:PE-A
Unfixed_c-MET.fcs	327
Unfixed_IgG1.fcs	36.7
Unfixed_Secondary only.fcs	30.7



Sample	Mean:PE-A
Unfixed_c-MET.fcs	573
Unfixed_IgG1.fcs	89.5
Unfixed_Secondary only.fcs	90.5

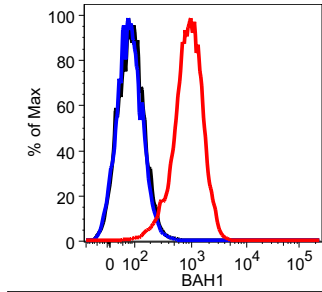


Sample	Mean:PE-A
Unfixed_c-MET.fcs	21.6
Unfixed_IgG1.fcs	18.3
Unfixed_Secondary Only.fcs	18.9

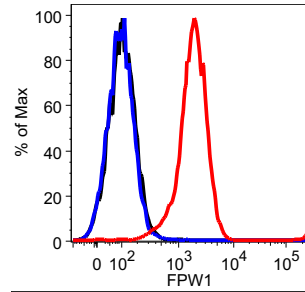


Sample	Mean:PE-A
Unfixed_c-MET.fcs	159
Unfixed_IgG1.fcs	42.8
Unfixed_Secondary only.fcs	43.1

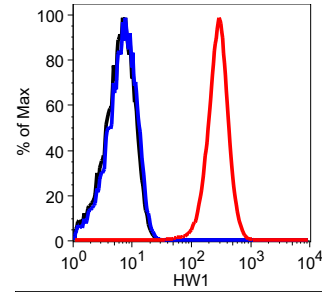
# SOX2



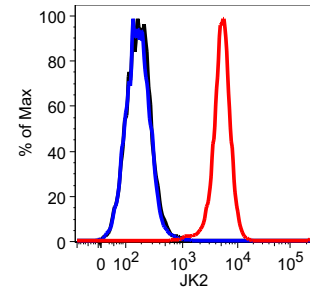
Sample	Mean:PE-A
Fixed_Sox2.fcs	1016
Fixed_IgG1.fcs	83.5
Fixed_Secondary.fcs	89.5



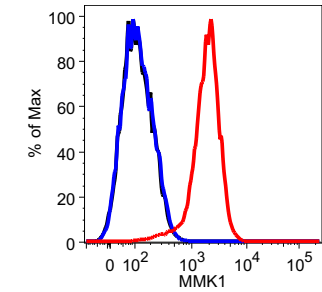
Sample	Mean:PE-A
Fixed_Sox2.fcs	3401
Fixed_IgG1.fcs	148
Fixed_Secondary Only.fcs	216



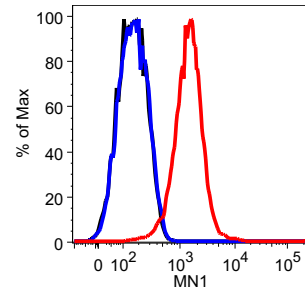
Sample	Mean:PE-A
Fixed Cells_Sox2.fcs	318
Fixed Cells_IgG1.fcs	7.52
Fixed Cells_Secondary Only.fcs	7.07



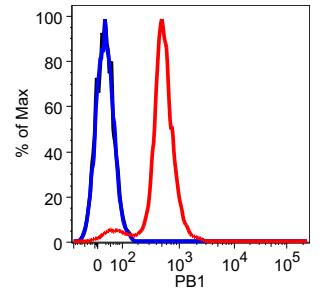
Sample	Mean:PE-A
Fixed_Sox2.fcs	6033
Fixed_IgG1.fcs	251
Fixed_Secondary Only.fcs	197



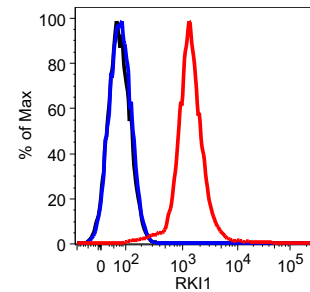
Sample	Mean:PE-A
Fixed_SOX2.fcs	2133
Fixed_IgG1.fcs	131
Fixed_Secondary.fcs	128



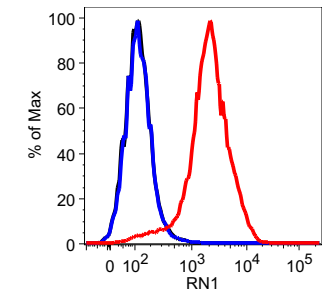
Sample	Mean:PE-A
Fixed_SOX2.fcs	2053
Fixed_IgG1.fcs	183
Fixed_Secondary.fcs	172



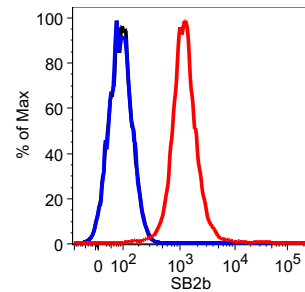
Sample	Mean:PE-A
Fixed_Sox2.fcs	555
Fixed_Secondary Only.fcs	25.5
Fixed_IgG1.fcs	25.7



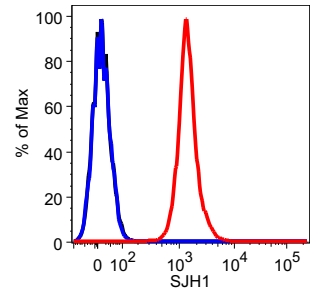
Sample	Mean:PE-A
Fixed_SOX2.fcs	1898
Fixed_IgG1.fcs	78.2
Fixed_Secondary.fcs	75.4



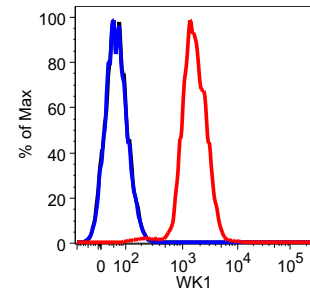
Sample	Mean:PE-A
Fixed_SOX2.fcs	2845
Fixed_IgG1.fcs	135
Fixed_Secondary.fcs	132



Sample	Mean:PE-A
Fixed_SOX2.fcs	1897
Fixed_IgG1.fcs	93.6
Fixed_Secondary.fcs	93.6



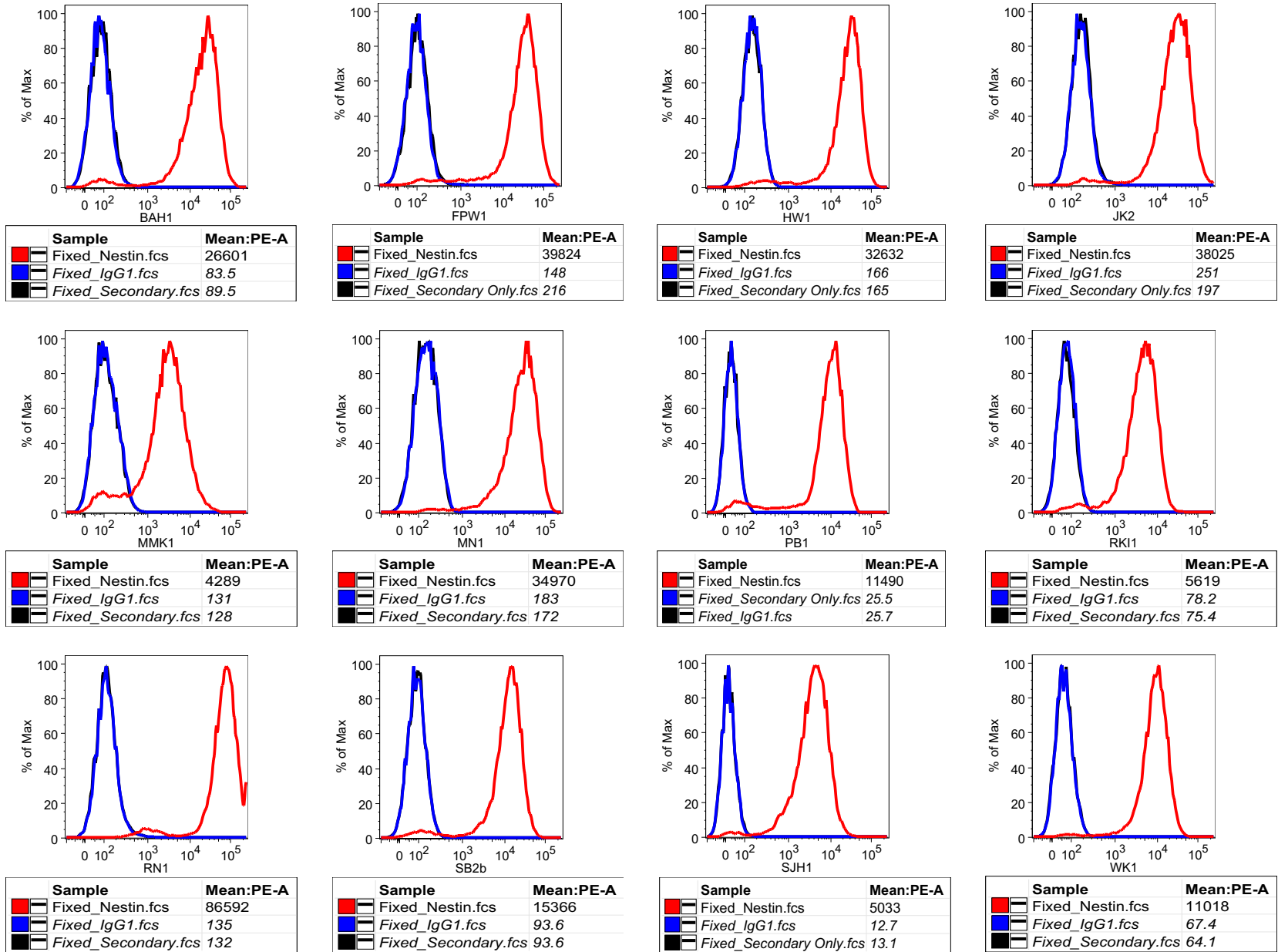
Sample	Mean:PE-A
Fixed_SOX2.fcs	1645
Fixed_IgG1.fcs	12.7
Fixed_Secondary Only.fcs	13.1



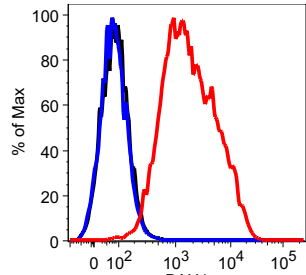
Sample	Mean:PE-A
Fixed_SOX2.fcs	2001
Fixed_IgG1.fcs	67.4
Fixed_Secondary.fcs	64.1



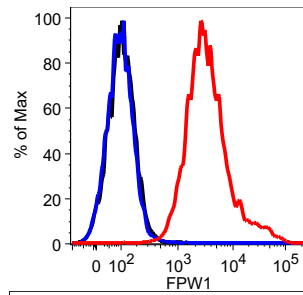
# Nestin



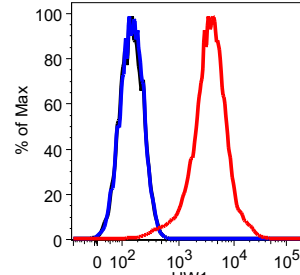
# GFAP



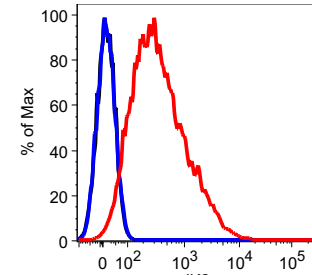
Sample	Mean:PE-A
Fixed_GFAP.fcs	3205
Fixed_IgG1.fcs	83.5
Fixed_Secondary.fcs	89.5



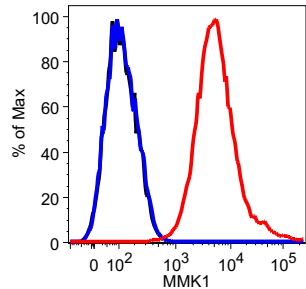
Sample	Mean:PE-A
Fixed_GFAP.fcs	6208
Fixed_IgG1.fcs	148
Fixed_Secondary Only.fcs	216



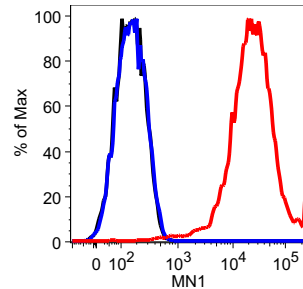
Sample	Mean:PE-A
Fixed_GFAP.fcs	4747
Fixed_IgG1.fcs	166
Fixed_Secondary Only.fcs	165



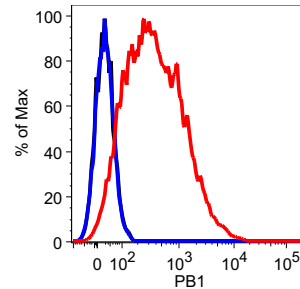
Sample	Mean:PE-A
Fixed_GFAP.fcs	715
Fixed_IgG1.fcs	9.17
Fixed_Secondary Only.fcs	8.76



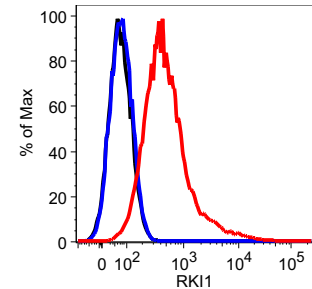
Sample	Mean:PE-A
Fixed_GFAP.fcs	9746
Fixed_IgG1.fcs	131
Fixed_Secondary.fcs	128



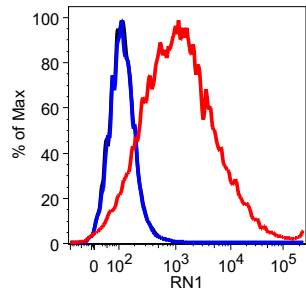
Sample	Mean:PE-A
Fixed_GFAP.fcs	36510
Fixed_IgG1.fcs	183
Fixed_Secondary.fcs	172



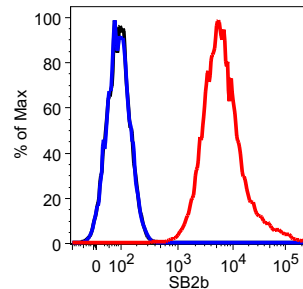
Sample	Mean:PE-A
Fixed_GFAP.fcs	733
Fixed_Secondary Only.fcs	25.5
Fixed_IgG1.fcs	25.7



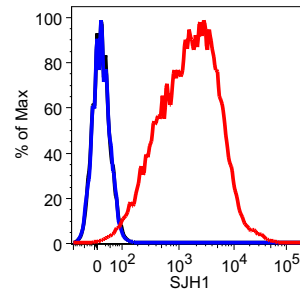
Sample	Mean:PE-A
Fixed_GFAP.fcs	1085
Fixed_IgG1.fcs	78.2
Fixed_Secondary.fcs	75.4



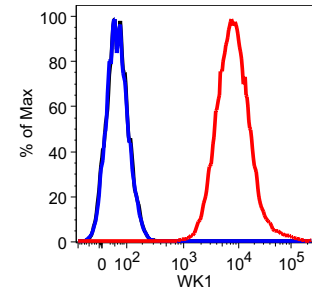
Sample	Mean:PE-A
Fixed_GFAP.fcs	5004
Fixed_IgG1.fcs	135
Fixed_Secondary.fcs	132



Sample	Mean:PE-A
Fixed_GFAP.fcs	11626
Fixed_IgG1.fcs	93.6
Fixed_Secondary.fcs	93.6

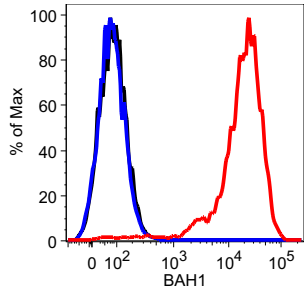


Sample	Mean:PE-A
Fixed_GFAP.fcs	3022
Fixed_IgG1.fcs	12.7
Fixed_Secondary Only.fcs	13.1

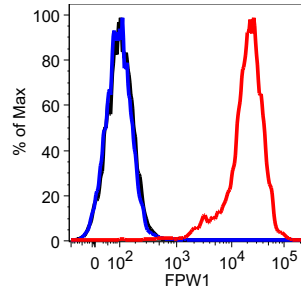


Sample	Mean:PE-A
Fixed_GFAP.fcs	11625
Fixed_IgG1.fcs	67.4
Fixed_Secondary.fcs	64.1

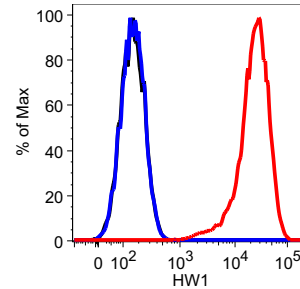
# Beta-III Tubulin



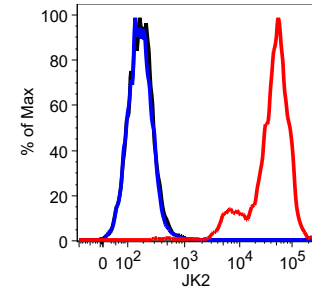
Sample	Mean:PE-A
Fixed_Beta-III Tubulin.fcs	24511
Fixed_IgG1.fcs	83.5
Fixed_Secondary.fcs	89.5



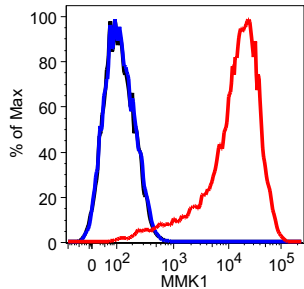
Sample	Mean:PE-A
Fixed_Beta-III Tubulin.fcs	24810
Fixed_IgG1.fcs	148
Fixed_Secondary Only.fcs	216



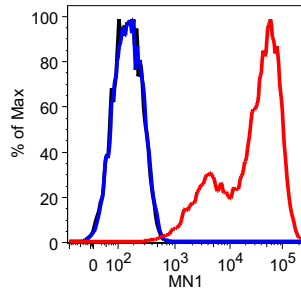
Sample	Mean:PE-A
Fixed_Beta-III Tubulin.fcs	28204
Fixed_IgG1.fcs	166
Fixed_Secondary Only.fcs	165



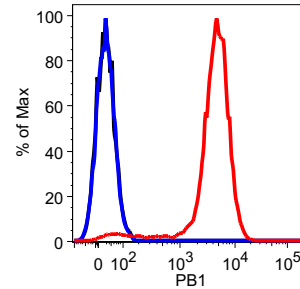
Sample	Mean:PE-A
Fixed_Beta-III Tubulin.fcs	52810
Fixed_IgG1.fcs	251
Fixed_Secondary Only.fcs	197



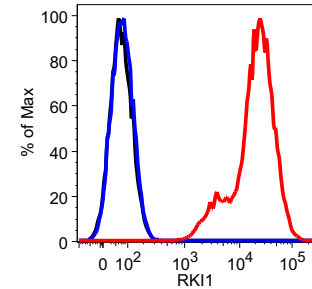
Sample	Mean:PE-A
Fixed_Beta-III Tubulin.fcs	20192
Fixed_IgG1.fcs	131
Fixed_Secondary.fcs	128



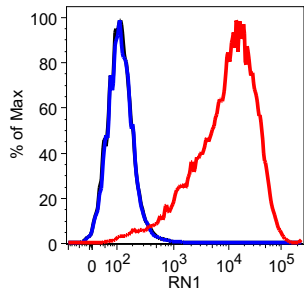
Sample	Mean:PE-A
Fixed_Beta-III Tubulin.fcs	44200
Fixed_IgG1.fcs	183
Fixed_Secondary.fcs	172



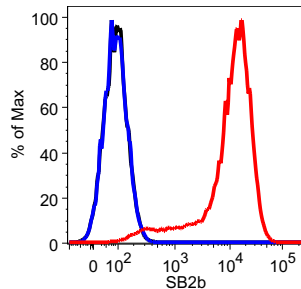
Sample	Mean:PE-A
Fixed_beta-III Tubulin.fcs	4993
Fixed_Secondary Only.fcs	25.5
Fixed_IgG1.fcs	25.7



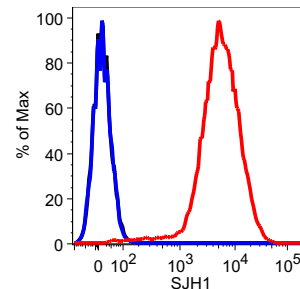
Sample	Mean:PE-A
Fixed_Beta-III Tubulin.fcs	26637
Fixed_IgG1.fcs	78.2
Fixed_Secondary.fcs	75.4



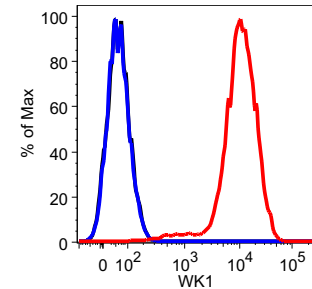
Sample	Mean:PE-A
Fixed_Beta-III Tubulin.fcs	16848
Fixed_IgG1.fcs	135
Fixed_Secondary.fcs	132



Sample	Mean:PE-A
Fixed_Beta-III Tubulin.fcs	14266
Fixed_IgG1.fcs	93.6
Fixed_Secondary.fcs	93.6

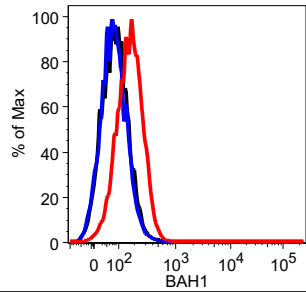


Sample	Mean:PE-A
Fixed_Beta-III Tubulin.fcs	7388
Fixed_IgG1.fcs	12.7
Fixed_Secondary Only.fcs	13.1

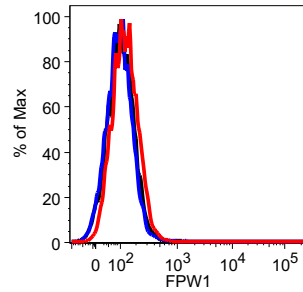


Sample	Mean:PE-A
Fixed_Beta-III Tubulin.fcs	13057
Fixed_IgG1.fcs	67.4
Fixed_Secondary.fcs	64.1

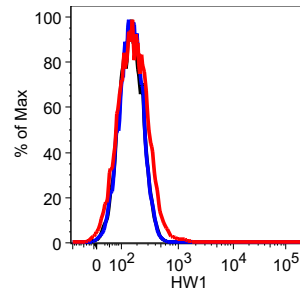
# MBP



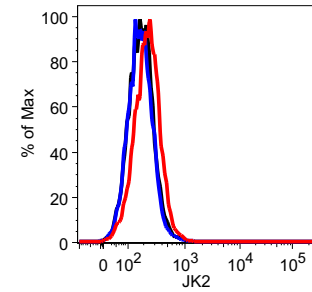
Sample	Mean:PE-A
Fixed_MBP.fcs	179
Fixed_IgG1.fcs	83.5
Fixed_Secondary.fcs	89.5



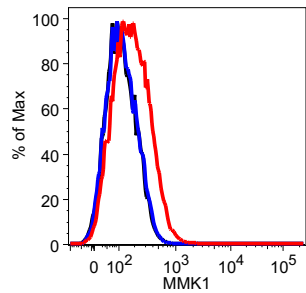
Sample	Mean:PE-A
Fixed_MBP.fcs	143
Fixed_IgG1.fcs	148
Fixed_Secondary Only.fcs	216



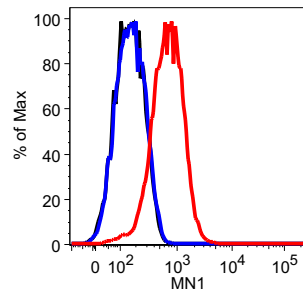
Sample	Mean:PE-A
Fixed_MBP.fcs	196
Fixed_IgG1.fcs	166
Fixed_Secondary Only.fcs	165



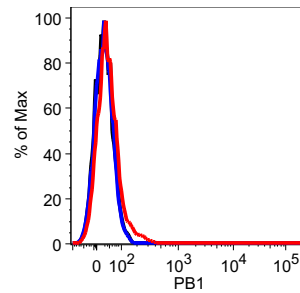
Sample	Mean:PE-A
Fixed_MBP.fcs	331
Fixed_IgG1.fcs	251
Fixed_Secondary Only.fcs	197



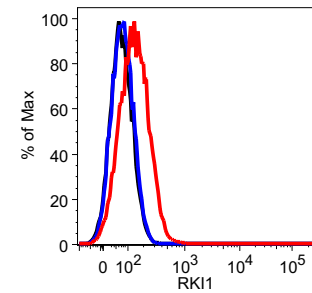
Sample	Mean:PE-A
Fixed_MBP.fcs	255
Fixed_IgG1.fcs	131
Fixed_Secondary.fcs	128



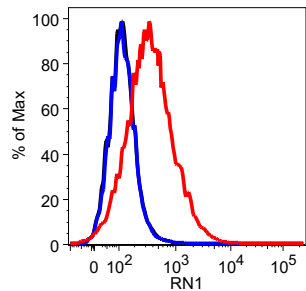
Sample	Mean:PE-A
Fixed_MBP.fcs	1038
Fixed_IgG1.fcs	183
Fixed_Secondary.fcs	172



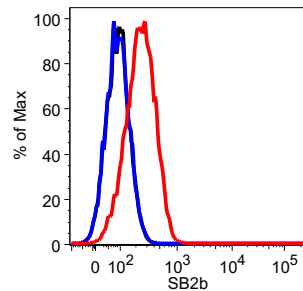
Sample	Mean:PE-A
Fixed_MBP.fcs	43.8
Fixed_Secondary Only.fcs	25.5
Fixed_IgG1.fcs	25.7



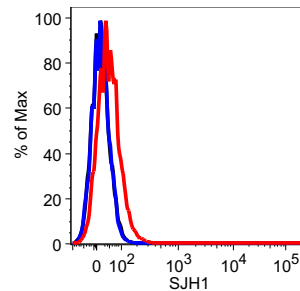
Sample	Mean:PE-A
Fixed_MBP.fcs	192
Fixed_IgG1.fcs	78.2
Fixed_Secondary.fcs	75.4



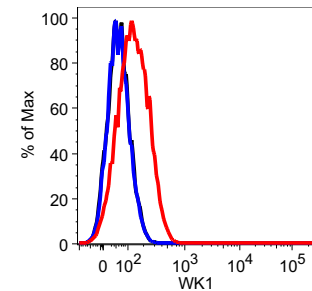
Sample	Mean:PE-A
Fixed_MBP.fcs	676
Fixed_IgG1.fcs	135
Fixed_Secondary.fcs	132



Sample	Mean:PE-A
Fixed_MBP.fcs	275
Fixed_IgG1.fcs	93.6
Fixed_Secondary.fcs	93.6



Sample	Mean:PE-A
Fixed_MBP.fcs	80.1
Fixed_IgG1.fcs	12.7
Fixed_Secondary Only.fcs	13.1



Sample	Mean:PE-A
Fixed_MBP.fcs	202
Fixed_IgG1.fcs	67.4
Fixed_Secondary.fcs	64.1