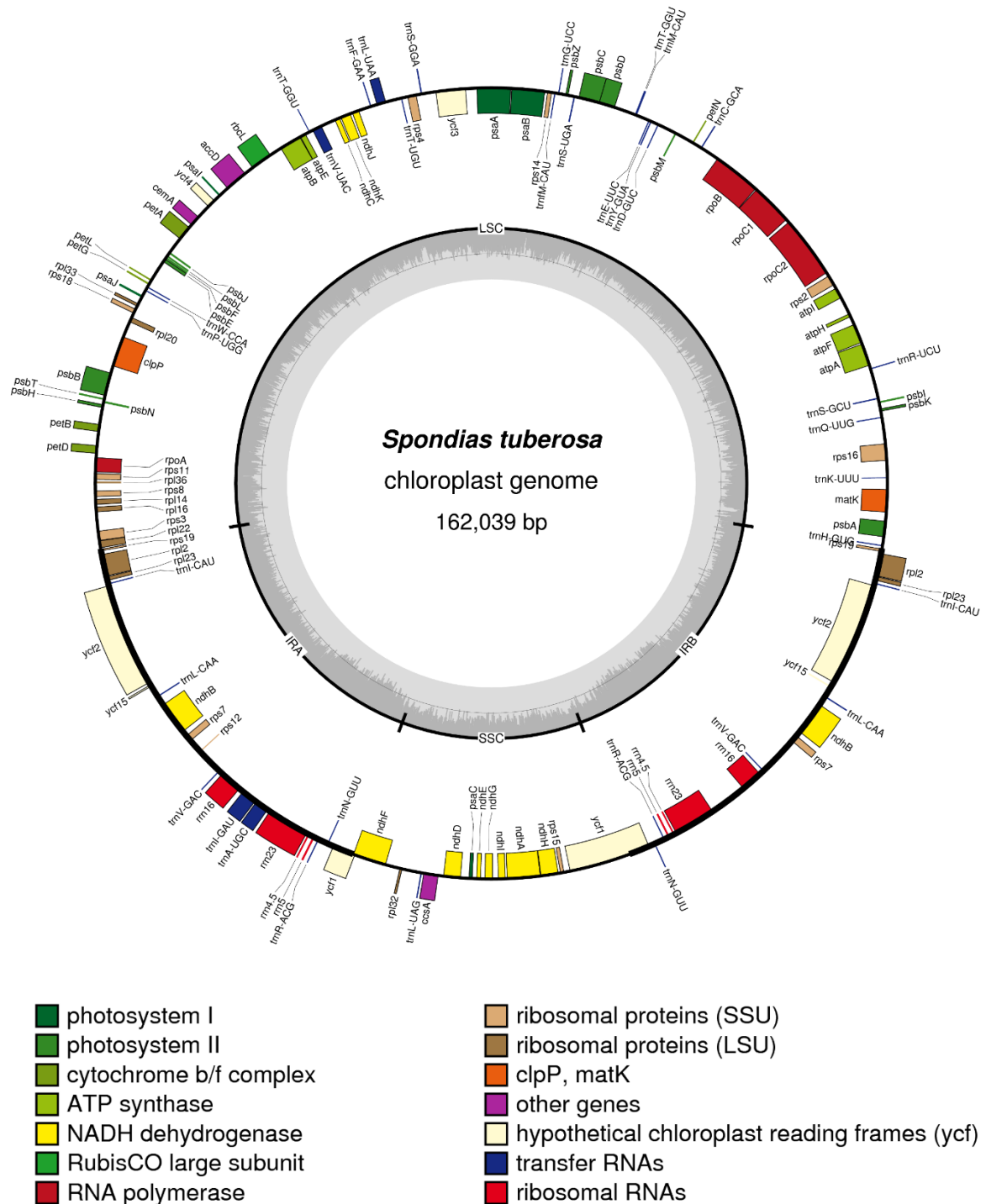


## Supplementary Material to “The complete chloroplast genome sequences of three *Spondias* species reveal close relationship among the species”



**Figure S1-** Chloroplast genome map of *S. tuberosa*. Annotated genes are colored according to the functional categories as described in the legend. Genes on the inside are transcribed in a clockwise direction and genes on the outside are transcribed in a counterclockwise direction. LSC: large single copy region; SSC: small single copy region; IRA, IRB: inverted repeats. The inside grey circle represents the C+G content.