

Supplementary Material to "Identification of novel mutations of Insulin Receptor Substrate 1 (IRS1) in tumor samples of non-small cell lung cancer (NSCLC): Implications for aberrant insulin signaling in development of cancer"

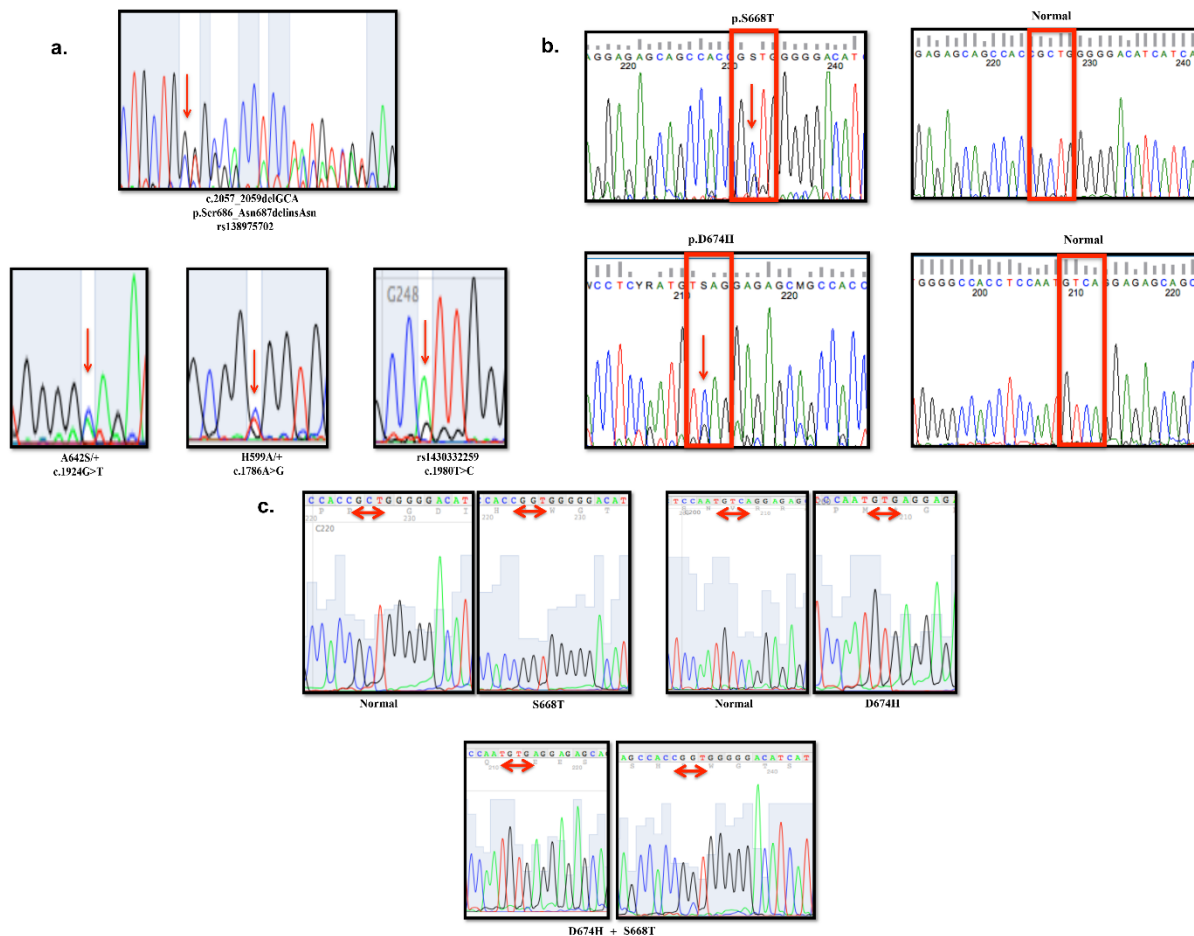


Figure S1 - Representative results for mutational analysis of: (a) IRS1 detected in tumor samples compared to matched controls. These genomic changes were identified in the literature; (b) novel IRS1 p.S668T and p.D674H heterozygote mutations compared to matched controls; (c) generation of novel mutations in pcDNA3 flag-tagged human IRS1 gene using Site Directed Mutagenesis. Mutations were confirmed by Sanger sequencing. Changes in amino acid codons are indicated by arrows.