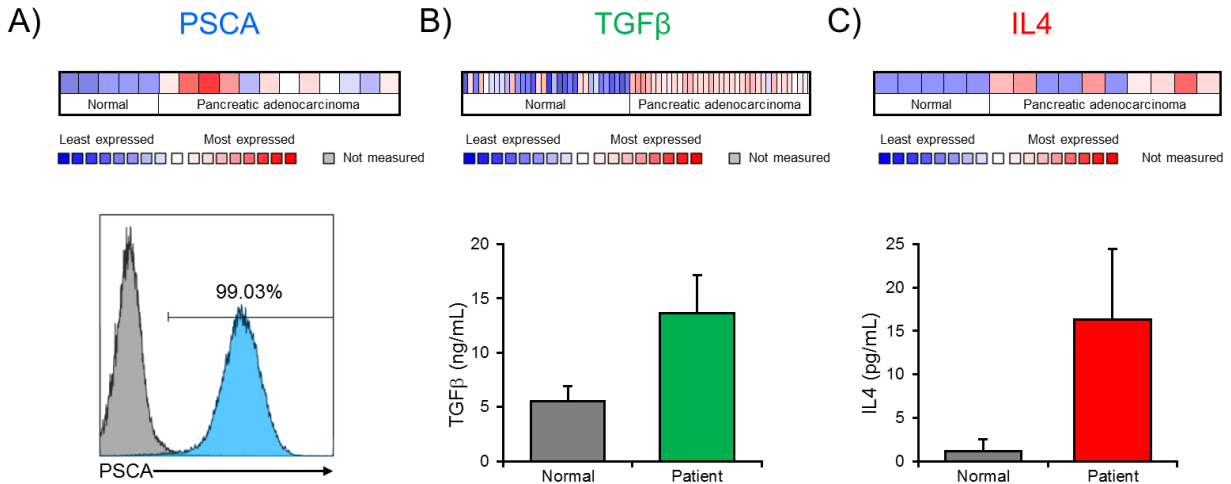


Supplementary Figure 1



Supplementary Figure 1. PSCA, TGFβ and IL4 overexpression at the pancreatic tumor site

(a) Heat maps obtained from oncomine data analysis tool demonstrating PSCA expression in pancreatic cancer patient samples (n=12) compared to normal donors (n=5). Histogram below depicts PSCA antibody staining (blue peak) compared to isotype control (grey peak) of CAPAN-1- a pancreatic tumor cell line. **(b)** Oncomine analysis of TGFβ expression in PDAC vs normal donors (n=39). ELISA evaluating TGFβ cytokine levels in serum obtained from PDAC patients (n=12) and normal control (n=6). **(c)** Heat map derived from oncomine data analysis tool comparing IL4 expression in PDAC vs normal donors. IL4 cytokine levels in patient serum (n=7) vs normal (n=3) donors measured by ELISA. Analysis and visualization of heat maps in panels **a-c** were performed using the Oncomine™ platform. Graphs in **(b)** and **(c)** represent mean±SEM.