

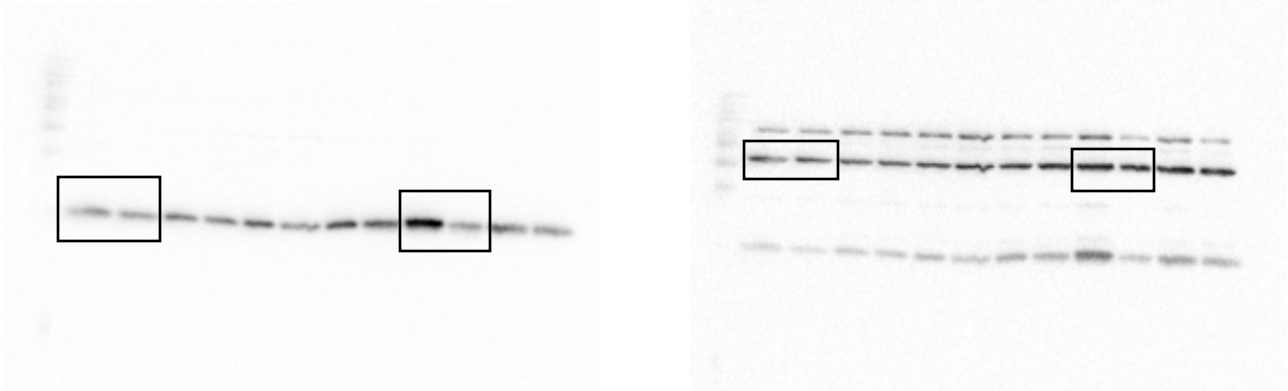
Supplementary Information

Title: Caveolin 1 is Associated with Upregulated Claudin 2 in Necrotizing Enterocolitis

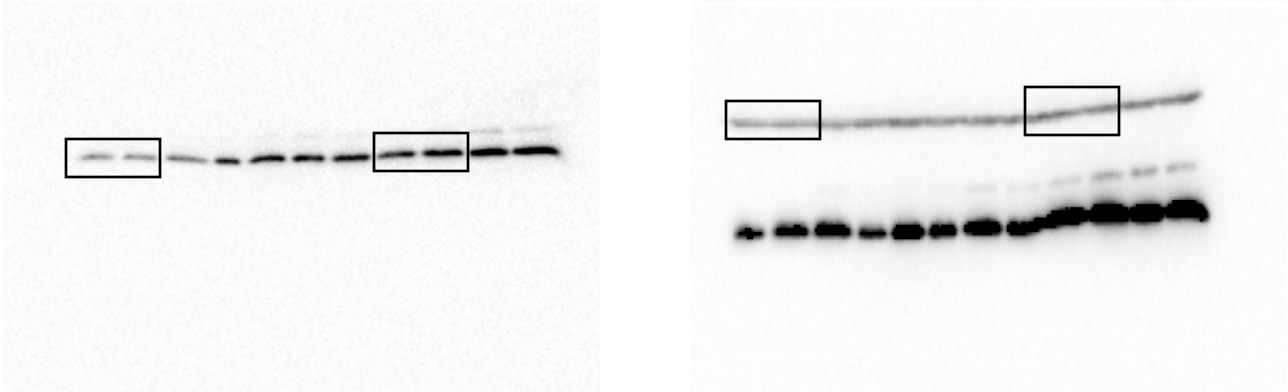
Authors: Guillermo Ares, Christie Buonpane, John Sincavage, Carrie Yuan, Douglas R. Wood, Catherine J. Hunter

Caco-2 Claudin Protein Expression

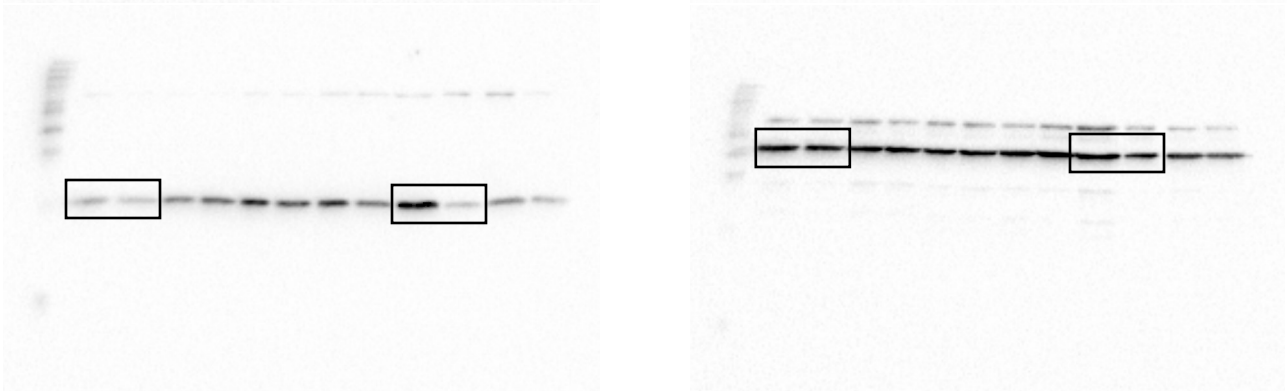
a.



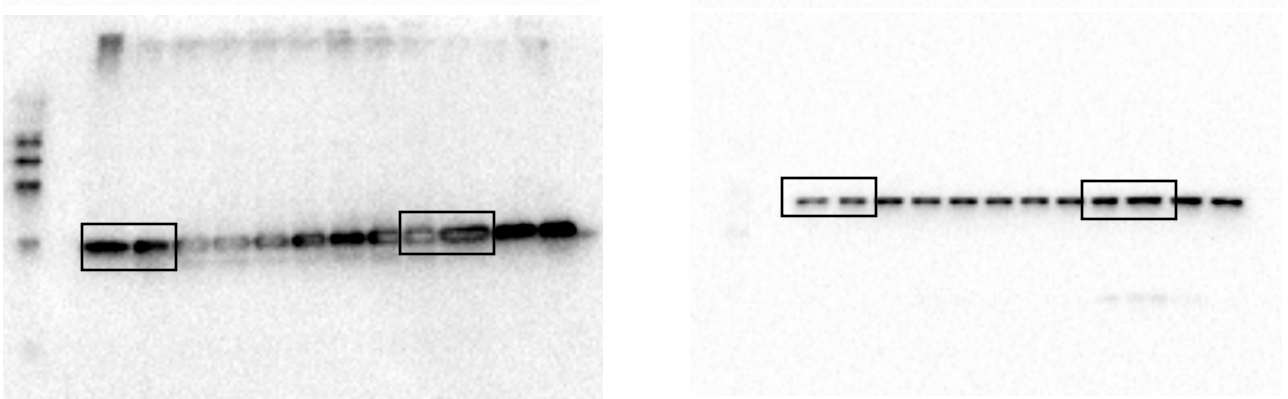
b.



c.

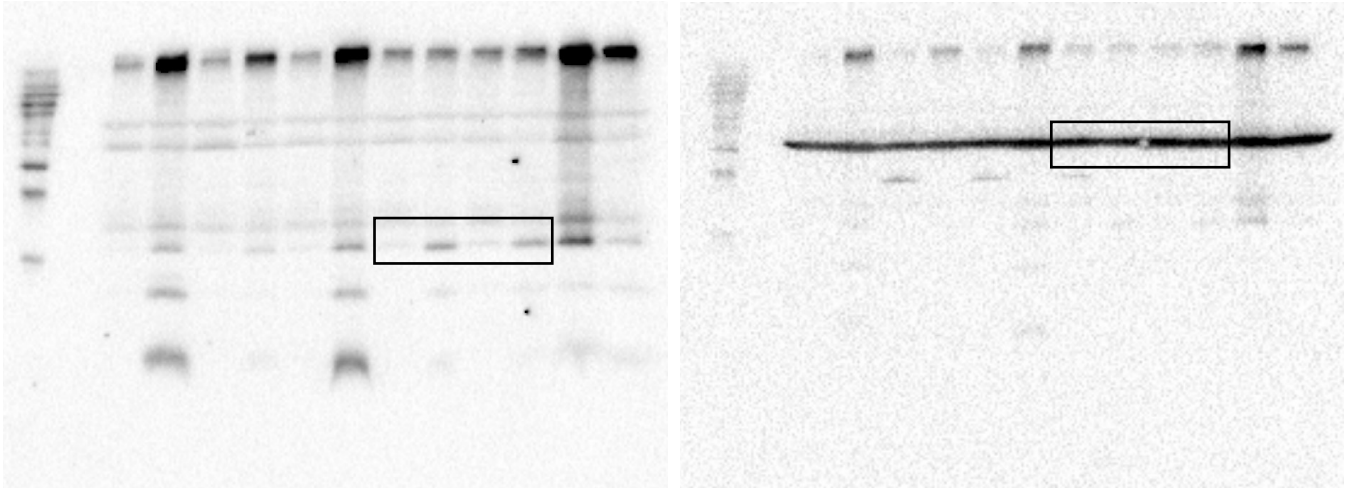


d.



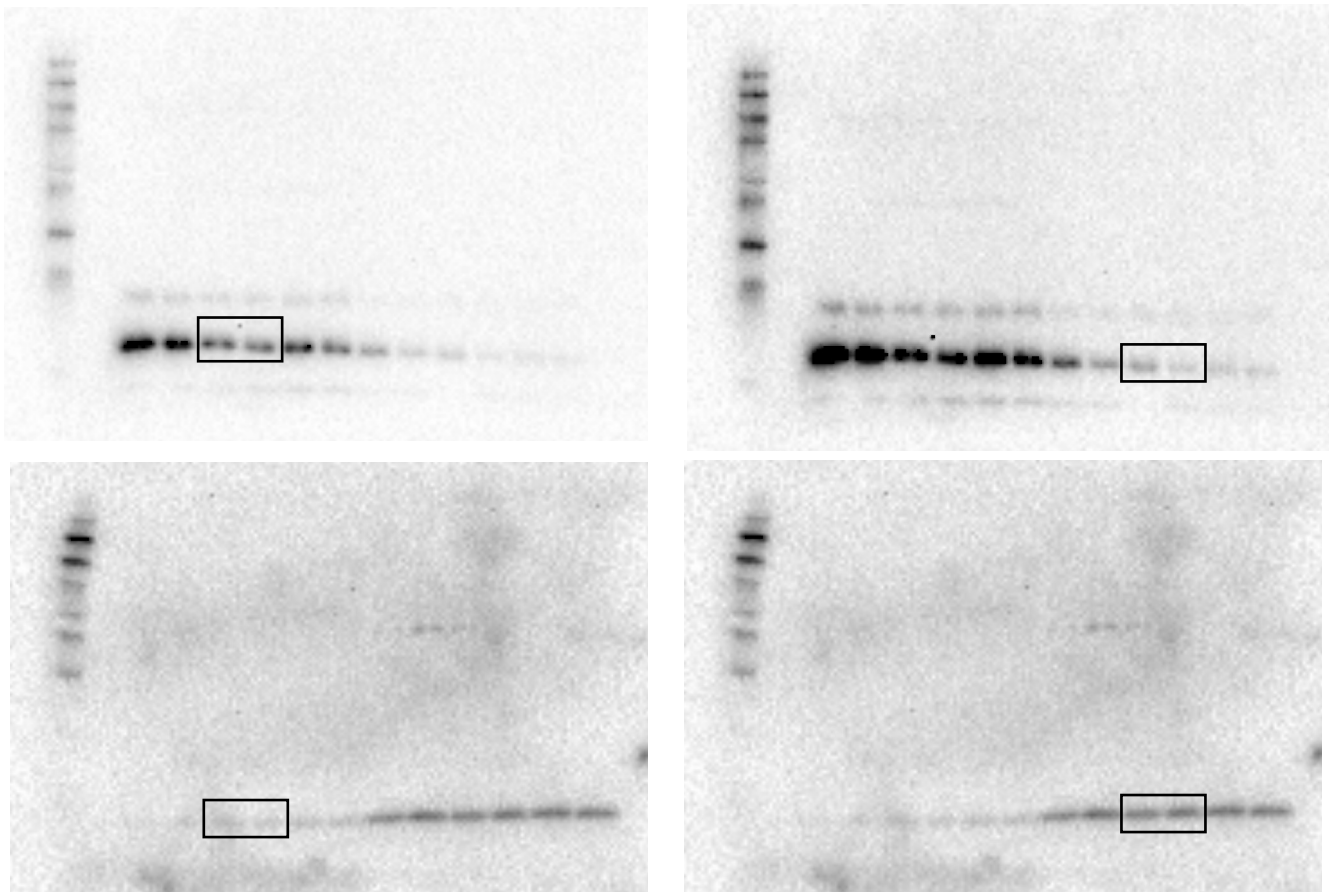
Supplementary Figure S1: Full length western blots used for Figure 2b. **a.** Caco-2 Claudin 1 (left) and β -actin (right) western blots. **b.** Caco-2 Claudin 2 (left) and β -actin (right) western blots. **c.** Caco-2 Claudin 3 (left) and β -actin (right) western blots. **d.** Caco-2 Claudin 4 (left) and β -actin (right) western blots.

Rat Claudin 2 Protein Expression



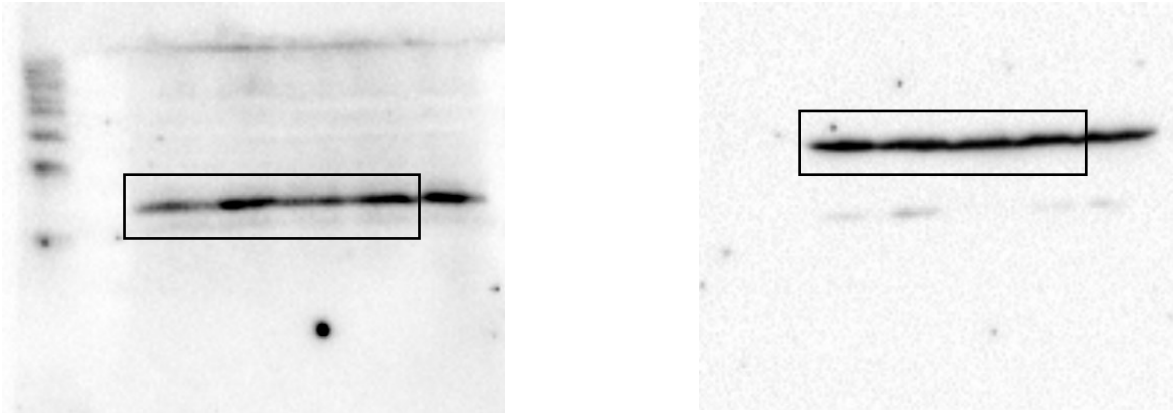
Supplementary Figure S2: Full length western blots used for Figure 3b. Rat Claudin 2 (left) and β -actin (right) western blots.

Caco-2 Localization of Claudin 2



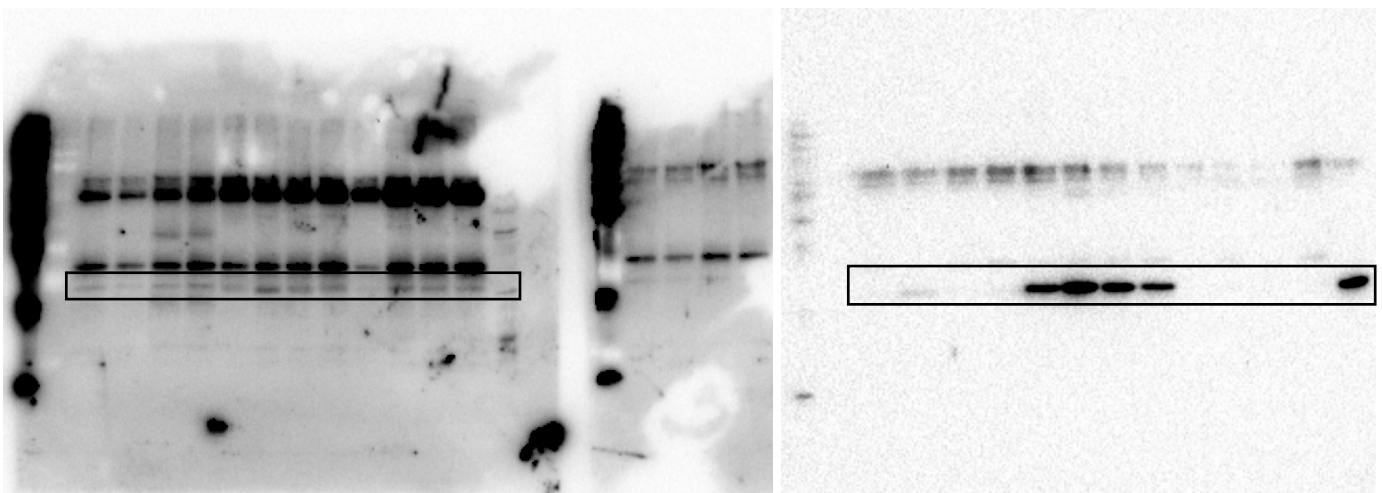
Supplementary Figure S3: Full length western blots used for Figure 4a. Caco-2 Cytosol (top left), Caco-2 Membrane (top right), Caco-2 Nucleus (bottom left) and Caco-2 Cytoskeleton (bottom right) western blots.

Claudin 2 Knock-in Protein Expression



Supplementary Figure S4: Full length western blots used for Figure 5b. Claudin 2 (left) and β -actin (right) western blots.

Immunoprecipitation



Supplementary Figure S5: Full length western blots used for Figure 7 a & b. Claudin 2 (left) and Caveolin 1 (right) western blots.