

**Suppl. table 1**

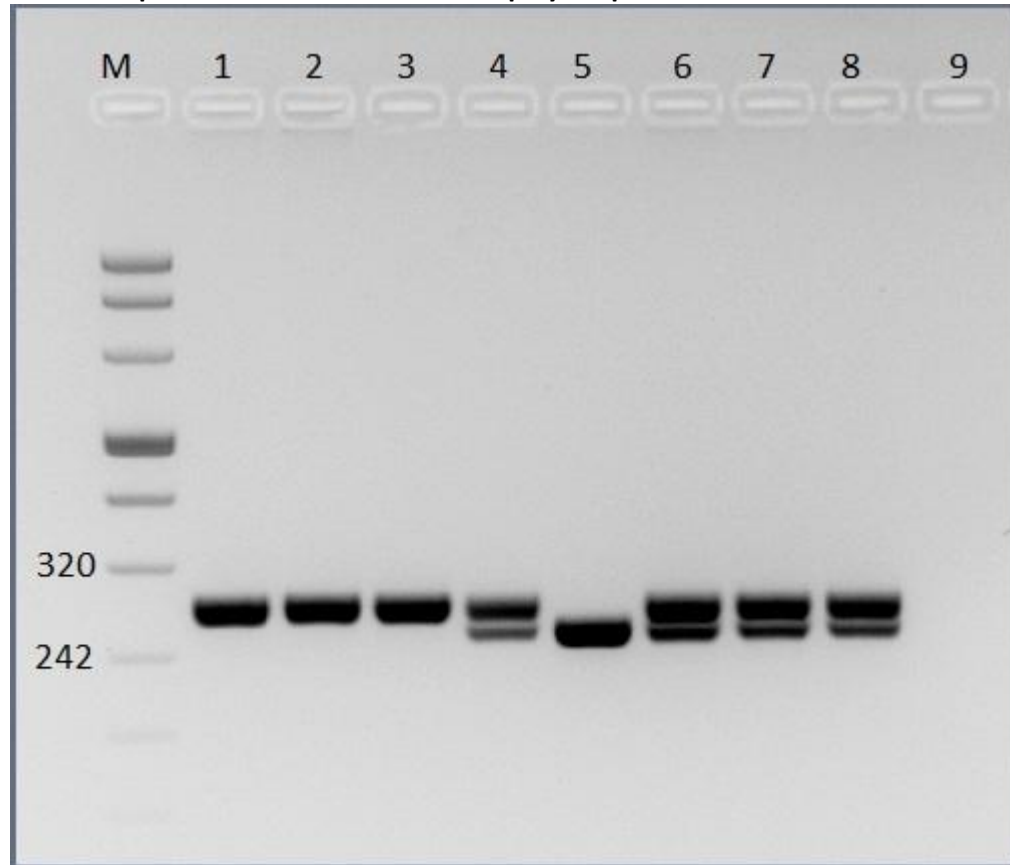
Sequences of primers used for genotyping.

GENE	SNPs	Chromosome /position	Primers/Probes
PDCD1	rs36084323 (PD-1.1)	2/242801596 G>A	<p>Forward primer: TCTAGCCTCGCTTCGGTTAT</p> <p>Reverse primer: CTCACTGCTGTGGCCTCTTT</p> <p><u>TCTAGCCTCGCTTCGGTTATTTTAAGCTGATGAGCCTGACGCATCTCATCTACTAATATCAGCAGTTTCATTTCTCTGTTTTTC</u>  <u>CATTCGCTGTAATAAAATGCTCAGCACAGAATACAAGGAGATAAGCAAGCCATTTACAAAACGCCGGGCCAGCCAGGCC</u>  <u>AGGCACTGGACCCCTGAACCACCCACCCCTGGCACGAGTGGGCTGGAGGGCAGGGCCCCGGGAAGAAGGTCAAGGCTGGAA</u>  <u>GGGGAGGTCAGCCTCACAGCCAGCCCTGCCACCGCCCCAGCCCCCGTTCAGGCTGTTGCAGGCATCACACGGTGGAAAGAT</u>  <u>CTGGAACTGTGGCCATGGTGTGAGGCCATCCACAAGGTGGAAGCTTTGAGGGGGAGCCGATTAGCCATGGACAGTTGTCATTC</u>  <u>AGTAGGGTCACTGTGCCCCAGCGAAGGGGGATGGGGC [A/G] GGAAGGCAGAGGCCAGGCACCTGCCCCAGCAGGGGCAGA</u>  <u>GGCTGTGGGCAGCCGGGAGGCTCCAGAGGCTCCGACAGAATGGGAGTGGGGTTGAGCCCACCCCTCACTGCAGCCCAGGAAC</u>  <u>CTGAGCCCAGAGGGGGCCACCCACCTTCCCCAGGCAGGGAGGGCCCGCCCCAGGGAGATGGGGGGGATGGGGGAGGAGAAGG</u>  <u>GCCTGCCCCACCCGGCAGCCTCAGGAGGGGCAGCTCGGGCGGGATATGGAAAGAGGCCACAGCAGTGAG</u></p>
PDCD1	rs10204525 (PD-1.6)	2/241850169 G>A	<p>Forward primer: GAAGTTTCAGGGAAGGTCAG</p> <p>Reverse primer: CAGTGTGTGGATGTGAGGAG</p> <p><u>GAAGTTTCAGGGAAGGTCAGAAGAGCTCCTGGCTGTGGTGGGCAGGCAGGAAACCCCTCCACCTTTACACATGCCAGGCAG</u>  <u>CACCTCAGGCCCTTTGTGGGCAGGGAAGCTGAGGCAGTAAGCGGCAGGCAGAGCTGGAGGCCCTTTCAGGCCAGCCAGCAC</u>  <u>TCTGGCCTCCTGCCCGGCATTCCACCCAGCCCTCACACCACTCGGGAGAGGGACATCCTACGGTCCCAAGGTCAGGAGGG</u>  <u>CAGGGCTGGGGTTGACTCAGGCCCTCCAGCTGTGGCCACCTGGGTGTTGGGAGGGCAGAAGTGCAGGCACCTAGGGCCCCC</u>  <u>CAT [A/G] TGCCCCACCTGGGAGCTCTCCTTGGAACCCATTCTTAAAGGGGTTGGCCGGGCTCCCACAGGGC</u>  <u>CTGGGTGGGAAGGTACAGGCGTTCCCCCGGGCCTAGTACCCCCGCGTGGCCTATCCACTCCTCACATCCACACTG</u></p>
IL28B	rs12979860	19/39248147 C>T	<p>Custom TaqMan SNP-genotyping</p> <p>Context Sequence [VIC/FAM]</p> <p><u>TGAACCAGGGAGCTCCCCGAAGGCG [C/T] GAACCAGGGTTGAATTGCACTCCGC</u></p>
TLR2	rs111200466	4/153684312 _153684334 del23	<p>Forward primer: CTCGGAGGCAGCGAGAAA</p> <p>Reverse primer: CTGGGCCGTGCAAAGAAG</p> <p><u>CTCGGAGGCAGCGAGAAAAGCGCAGC [-/CAGGCGGCTGCTCGGGCTTCTCT] CAGGTGACTGCTCGGAGTTCTCCCAGGTACG</u>  <u>TCGTGCGCTCCCCACTCGTGTGGTCTCTCTGCACCCCTTCTTGGGGTTCGGGTCGGGCAGGGGCGGAGGGGAGCCGAGCCCCG</u>  <u>TCACGGGCTCTGGGGAACCCGGGCTCCCGTTTCGGCTGCACCTGGGCCCTAGCTCCTGTCCGGGCGGGGATAGCGGGAAGCGC</u>  <u>ACCAGGCCCCGGGACGCCGGTGCTTCTTTGCACGGCCAG</u></p>

SNPs single nucleotide polymorphisms

**Suppl. Figure 1**

**Gel electrophoresis of rs111200466 TLR2 polymorphisms.**



Agarose gel electrophoresis stained with ethidium bromide showing the amplification of the-196 to-174 del/ins polymorphism of toll-like receptor 2. M Marker, Lanes 1,2 and 3: PCR product of 286bp homozygous (ins/ins) genotype, Lanes 4, 6,7 and 8: PCR product of 286bp and 264bp heterozygous (ins/del) genotype, Lane 5: PCR product of 264bp homozygous (del/del) genotype, Lane 9 negative control.