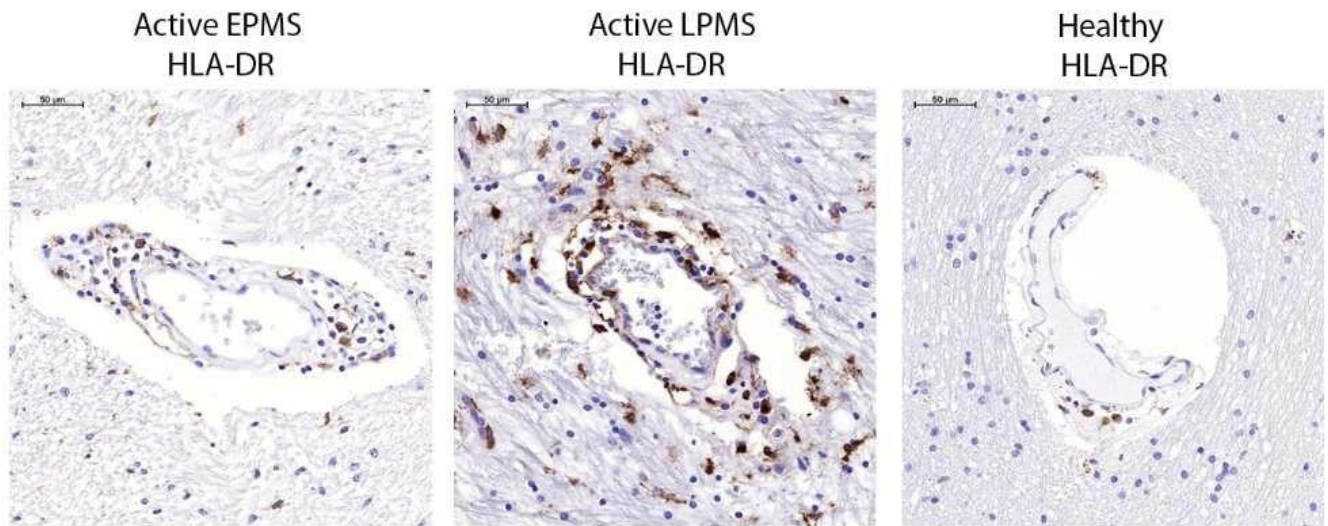


Dynamic Changes in Brain Tissue Mesenchymal Perivascular Cells Associate with Multiple Sclerosis Disease Duration, Active Inflammation, and Demyelination.

Iacobaeus, Sugars et al.



**Supplementary Figure 4.** Multiple Sclerosis (MS) and healthy control brain tissues were immunohistochemically stained with antibodies targeted against HLA-DR. HLA-DR positive staining localized to the adventitia and perivascular areas in active MS lesions of both EPMS and LPMS. Positive staining was also observed in other cells, potentially microglia, within active LPMS tissue. Small amounts of HLA-DR detection were found in the healthy control tissue. (Suppl. Fig. 4). Scale bars: = 200µm.