

Cyclin D1 protein affecting global women's health by regulating HPV mediated adenocarcinoma of the uterine cervix

Richa Tripathi, PhD^{1,2}; Gayatri Rath, MS³; Poonam Jawanjal³, PhD; Mausumi Bharadwaj, PhD^{1*}; Ravi Mehrotra, MD^{2*}

¹Division of Molecular Genetics & Biochemistry, ICMR-National Institute of Cancer Prevention and Research (NICPR), Noida, India.

²Division of Preventive Oncology, ICMR-National Institute of Cancer Prevention and Research (NICPR), Noida, India.

³Department of Anatomy, VMMC & Safdarjung Hospital, New Delhi, India.

Supplementary Tables

Table S1. Test Performance of Cyclin D1 (nuclear) protein in ADC.

| Parameters (ADC) | Cyclin D1 |
|------------------------------------|------------------|
| Cut-off value (Total score) | 2.0 |
| Sensitivity (%) | 80 |
| Specificity (%) | 80 |
| AUC | 0.869 |
| p-value | *0.0001 |

Abbreviations: ADC, adenocarcinoma; AUC: Area under curve

*p-value \leq 0.05 is significant

Table S2. Pairwise comparison between Cyclin D1 and Notch-3, Cyclin D1 and JAG1, Notch-3 and JAG1

| Proteins | Mean Rank | Sum of Rank | p-value | MannWhitney U test | Wilcoxon test (W) |
|-----------------|------------------|--------------------|----------------|---------------------------|--------------------------|
| HES1 | 16.05 | 321.0 | *0.015 | 111.0 | 321.0 |
| Notch-3 | 24.95 | 499.0 | | | |
| HES1 | 26.33 | 526.0 | *0.0001 | 83.5 | 293.5 |
| Jagged-1 | 14.68 | 293.0 | | | |
| Notch-3 | 28.48 | 569.5 | *0.0001 | 40.5 | 250.5 |
| Jagged-1 | 12.53 | 250.5 | | | |

*p-value ≤ 0.05 is significant

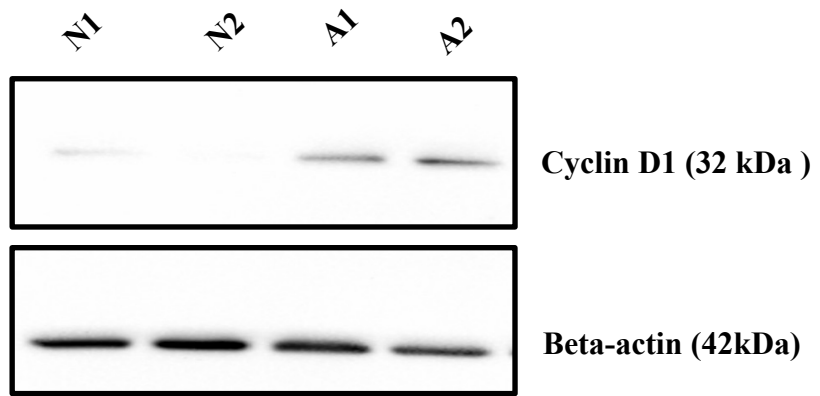


Figure 2f

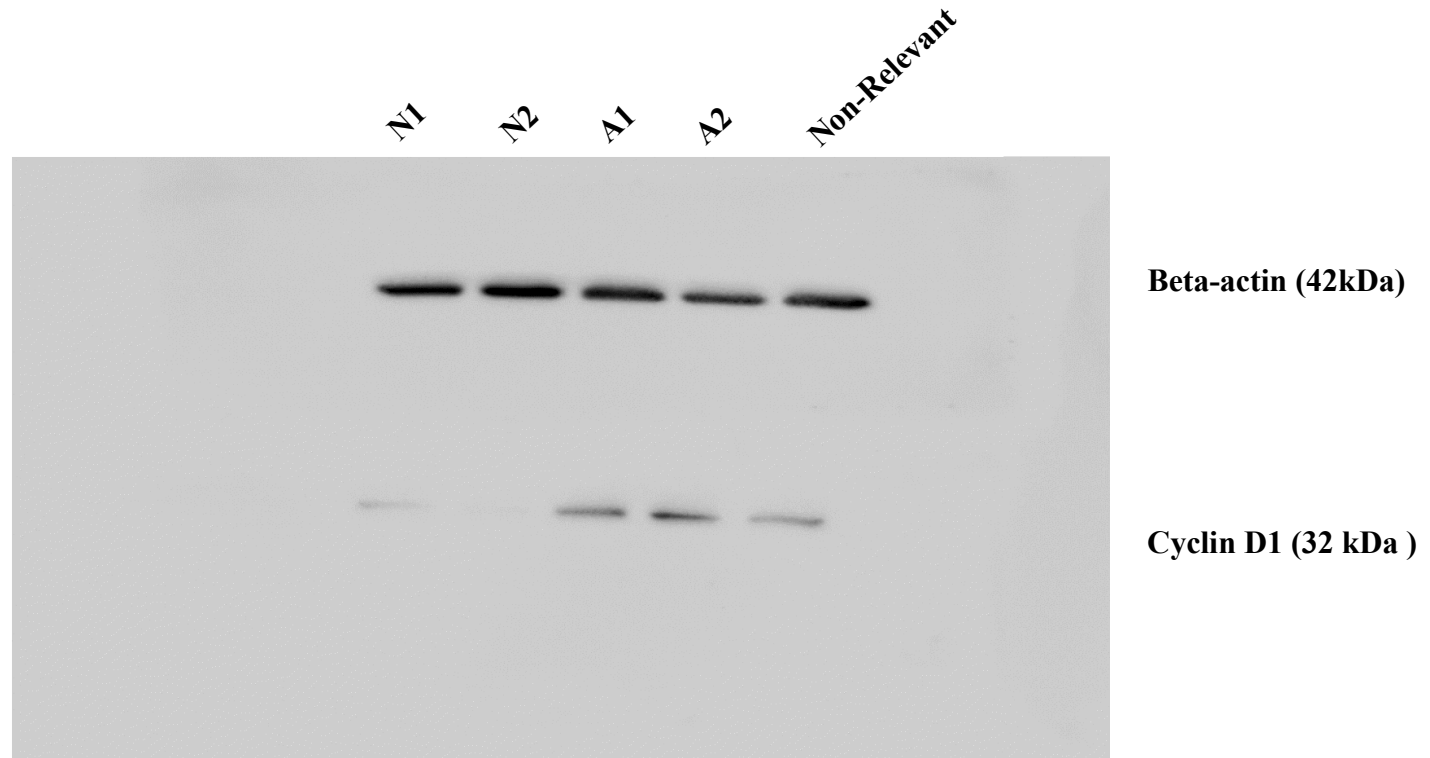


Figure 2f (Original blot)