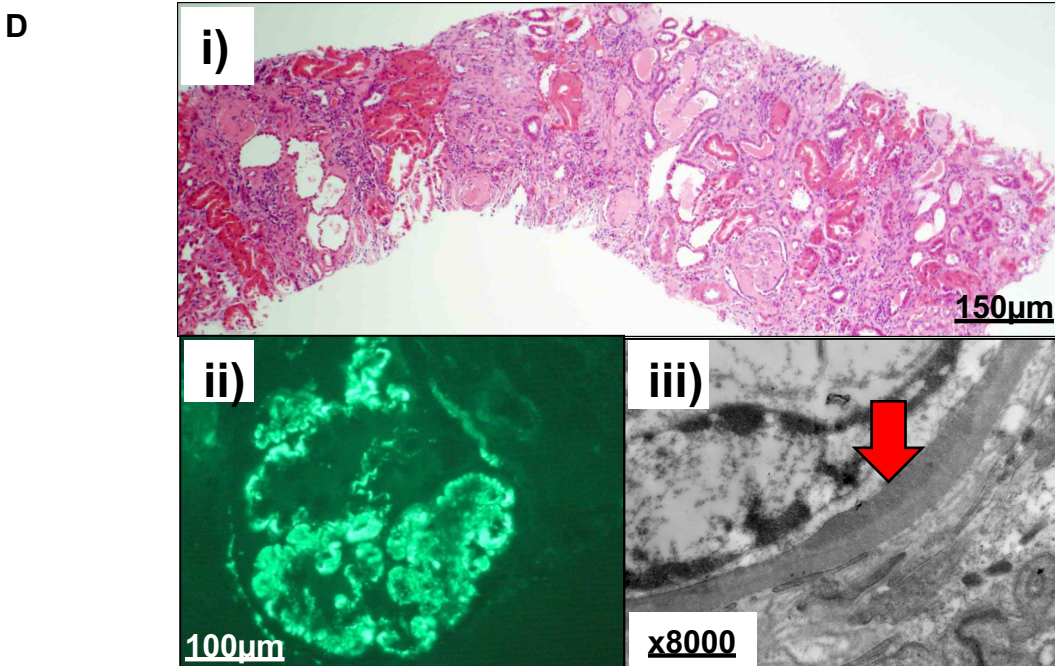


**C**

ID	Gene	c. change	Exon	Zygoty	p.Change	Conservation	Poly 2	SIFT	Mut Taster	EVS	gnomAD
P640_82	<i>INF2</i>	c.353T>A	2/23	het	p.Ile118Asn	<i>D. melanogaster</i>	0.998	Del.	D.C.	/	/
P640_83	<i>INF2</i>	c.353T>A	2/23	het	p.Ile118Asn	<i>D. melanogaster</i>	0.998	Del.	D.C.	/	/
P640_82	<i>C3</i>	c.4534C>T	37/41	het	p.Arg1512Cys	<i>X. tropicalis</i>	0.652	Del.	D.C.	/	0/2/ 246248
P640_2008	<i>C3</i>	c.4534C>T	37/41	het	p.Arg1512Cys	<i>X. tropicalis</i>	0.652	Del.	D.C.	/	0/2/ 246248



**Supplementary Figure S1. Genetic and clinical data on family P640**

**A. Extended family pedigree of family P640** Male are indicated by a square; female are indicated by a circle.

**B. Focus of whole exome sequencing analysis** - Four individuals were submitted for whole exome analysis

**C. Final evaluation table following WES analysis for family P640**

**D. Kidney biopsy of patient P640\_83**

- i) Light microscopy showing 3 sclerosed glomeruli, 1 partially sclerosed & 1 proliferative glomeruli
- ii) Direct immunofluorescence demonstrating a glomerulus with granular, mesangial C3 granular
- iii) Electron microscopy demonstrating loss of podocytes – red arrow demonstrates granular sub-endothelial dense deposits