

Supplementary Materials: Crystallization of Poly(ϵ -caprolactone) in Poly(vinylidene fluoride)/Poly(ϵ -caprolactone) Blend

Yang Kong, Yangmin Ma, Lele Lei, Xuechuan Wang and Haijun Wang

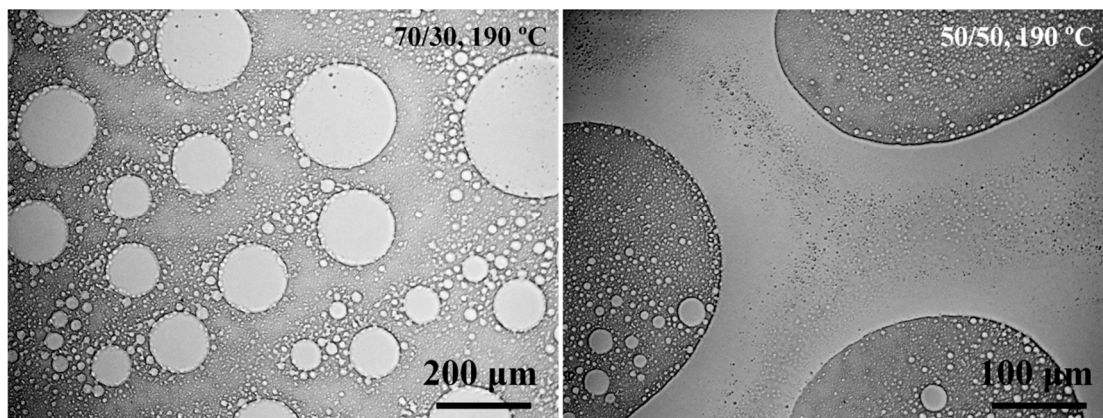


Figure S1. Phase separation morphologies in the 70/30 and 50/50 PVDF/PCL blend at 190 °C.