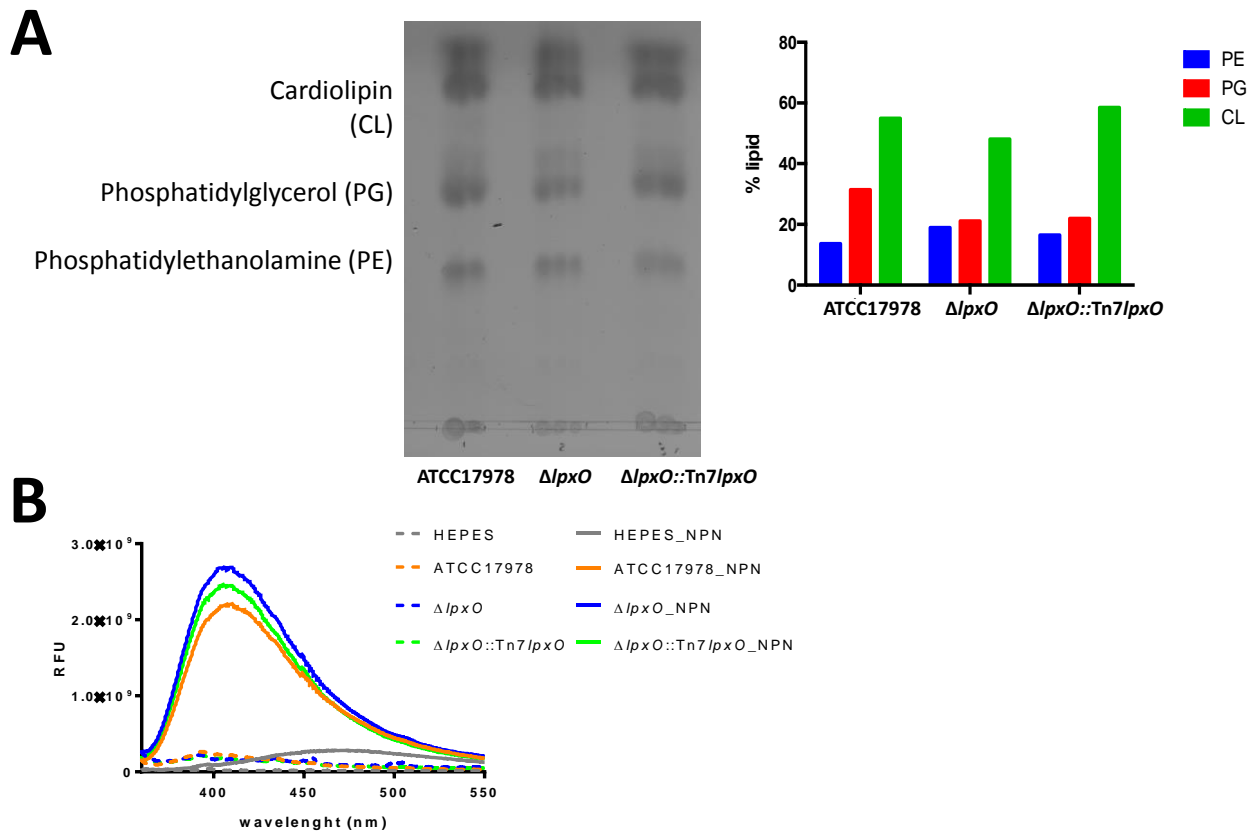


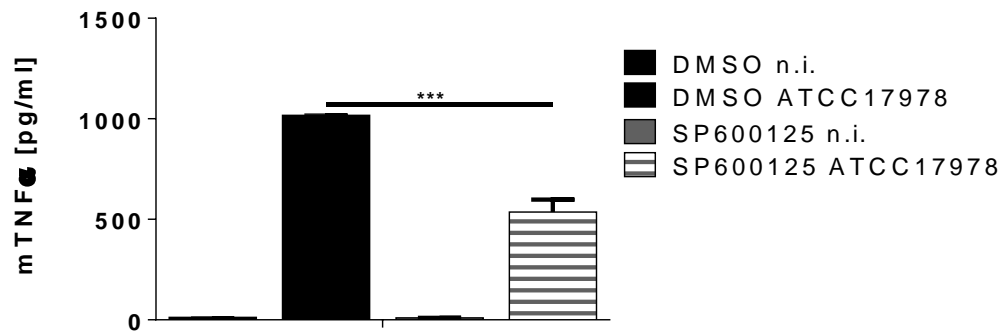
Supplementary figure 1. Growth kinetics of *A. baumannii* strains.

Growth kinetics of *A. baumannii* ATCC 17978 (ATCC 17978, black), *A. baumannii* $\Delta lpxO$ ($\Delta lpxO$, red), *A. baumannii* $\Delta lpxO::Tn7lpxO$ ($\Delta lpxO::Tn7lpxO$, blue) cultured in LB broth (LB, solid lines) and M9 minimal medium (dotted lines) over 24 hours at 37°C. Values are presented as the mean \pm SD of five independent experiments.



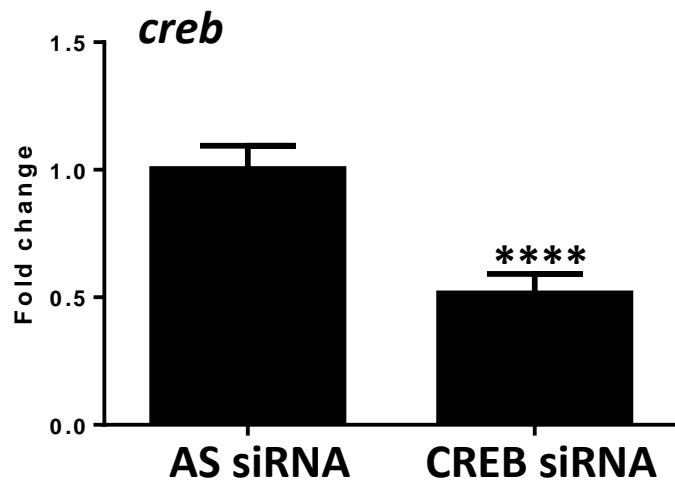
Supplementary figure 2. *lpxO* deletion in *A. baumannii* does not result in outer membrane alterations.

(A) Analysis by thin layer chromatography of *A. baumannii* cell envelope phospholipids; right panel shows the percent of a given phospholipid per total lipid content. (B) Partition of the NPN probe in the outer membrane of *A. baumannii* ATCC 17978 (ATCC 17978), *A. baumannii* $\Delta lpxO$ ($\Delta lpxO$), (D) *A. baumannii* $\Delta lpxO::Tn7lpxO$ ($\Delta lpxO::Tn7lpxO$). Results are representative of three independent experiments.



Supplementary figure 3. JNK controls inflammatory response in *A. baumannii* infected macrophages.

TNF α secretion upon infection in iBMDM macrophages was analysed in the presence of the MAPK JNK inhibitor (SP600125, 10 μ M, 2 hours before infection or DMSO [vehicle solution]). Macrophages were stimulated for 5 hours with UV-killed *A. baumannii* ATCC17978 and TNF α levels were determined in the supernatant of infected cells. ***, $P < 0.001$; for the indicated comparison using the two-way ANOVA with Bonferroni contrasts.



Supplementary figure 4. Knockdown efficiency of CREB by siRNA.

Transcript levels of *creb* relative to AllStars control siRNA-transfected cells as determined by RT-qPCR after gene normalization. Values are presented as the mean \pm SD of three independent experiments measured in duplicate. **** $P < 0.0001$ one-tailed *t* test.