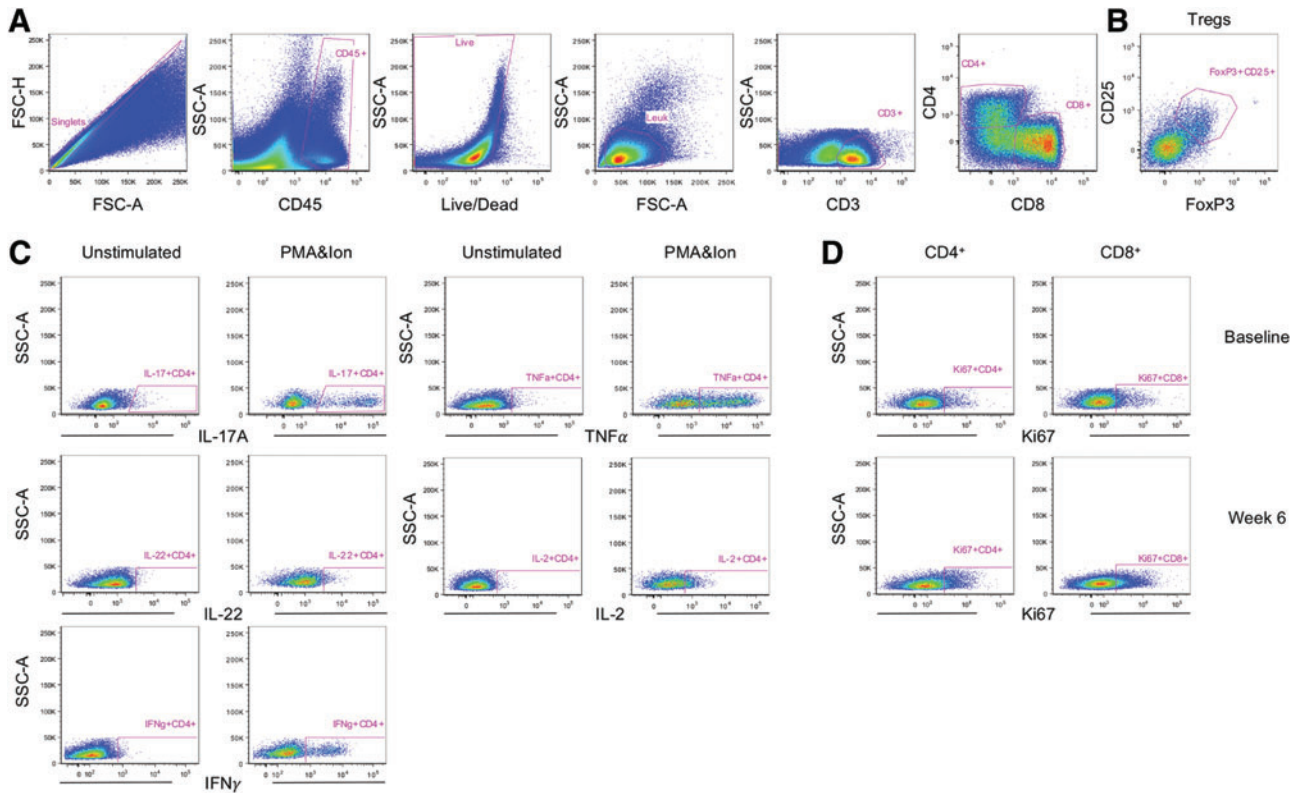


Supplementary Data



SUPPLEMENTARY FIG. S1. Gating strategies used for evaluation of gut homeostasis. Representative gating strategy in colon to identify T cell subsets. **(A)** Lymphocytes were identified by excluding doublets using forward and side light scatter, gating on CD45⁺ cells, removing dead cells with an live/dead viability dye, and then by gating on CD3⁺ T cells followed by subsequent gating for individual T cell subsets. **(B)** Tregs were identified by coexpression of CD25 and FoxP3 within the CD4⁺ T cell subset from unstimulated samples. **(C)** Cytokine-producing (IL-17A, IL-22, IFN γ , TNF α , and/or IL-2) CD4⁺ T cells in PMA and ionomycin-stimulated cells were determined by subtracting frequencies from unstimulated controls. **(D)** Immune activation (Ki67) was measured in CD4 and CD8 T cells. Ion, ionomycin.