

1

Supplementary Information:

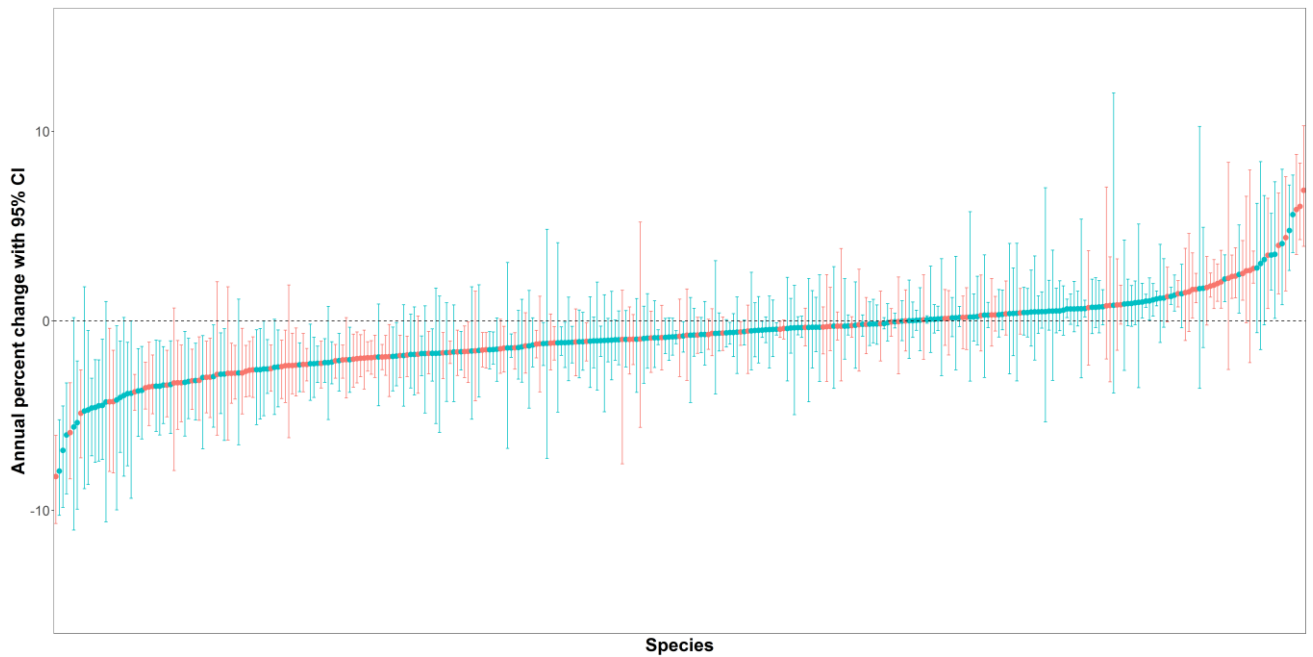
2

Widespread losses of pollinating insects in Britain

3

Powney et al.

4 **Supplementary Figure 1** The annual growth rate in occupancy between 1980 and 2013 highlights the
5 variation in trend estimates among species (bees – red, hoverflies – blue). Individual species trends
6 were summarised using the median (points) and 95% credible intervals (bars). Species (n = 4) with
7 either exceptionally large uncertainty (95% credible intervals span greater than 20 percent), or with
8 extremely strong trend estimates (annual trend estimate greater than 10%, or less than -10%) were
9 excluded from this plot.

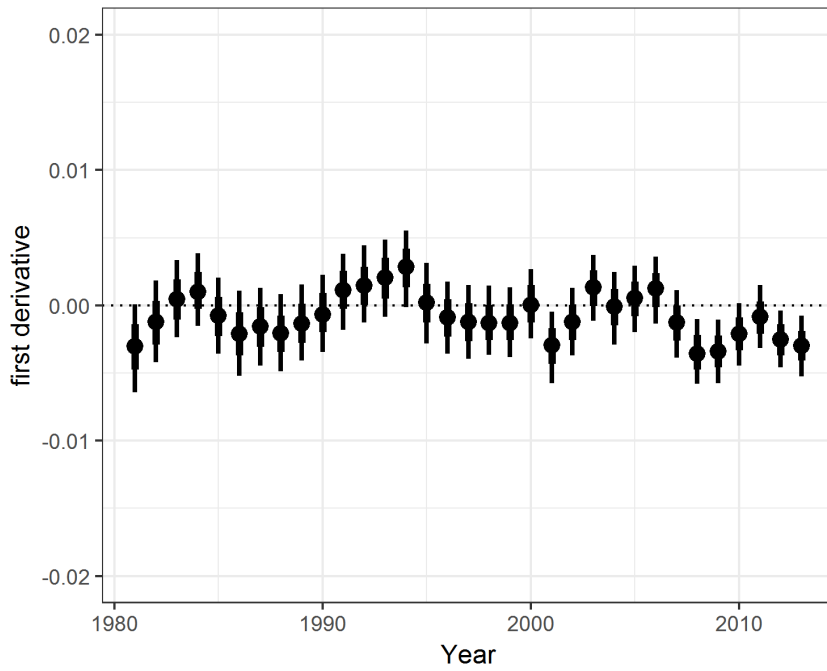


10

11

12 **Supplementary Figure 2** First derivatives of average occupancy for a) bees and b) hoverflies. Points
13 are the median estimate of the posterior distribution, with uncertainty presented as the limits of the
14 credible intervals (thin = 95% CI, thick = 80% CI).

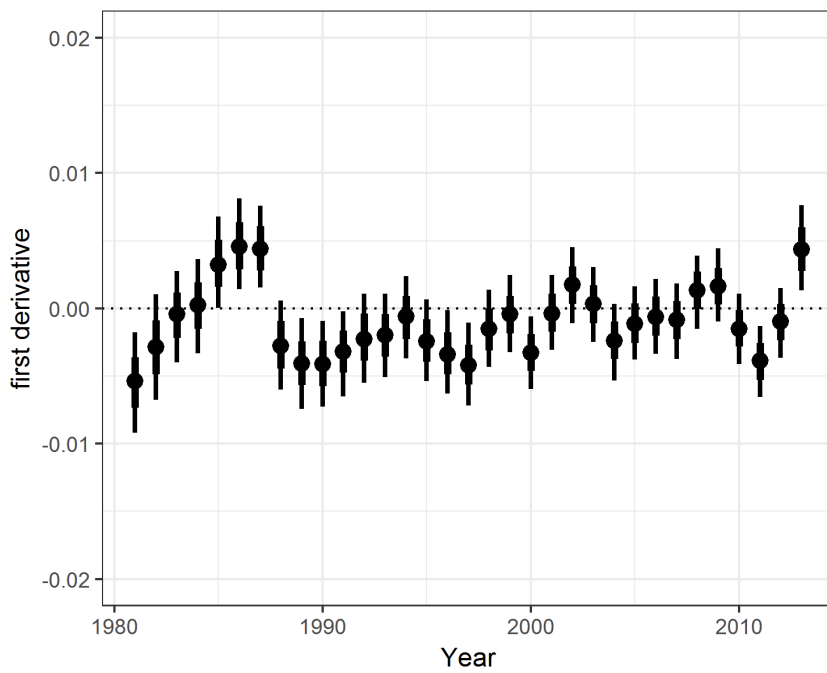
15 a)



16

17

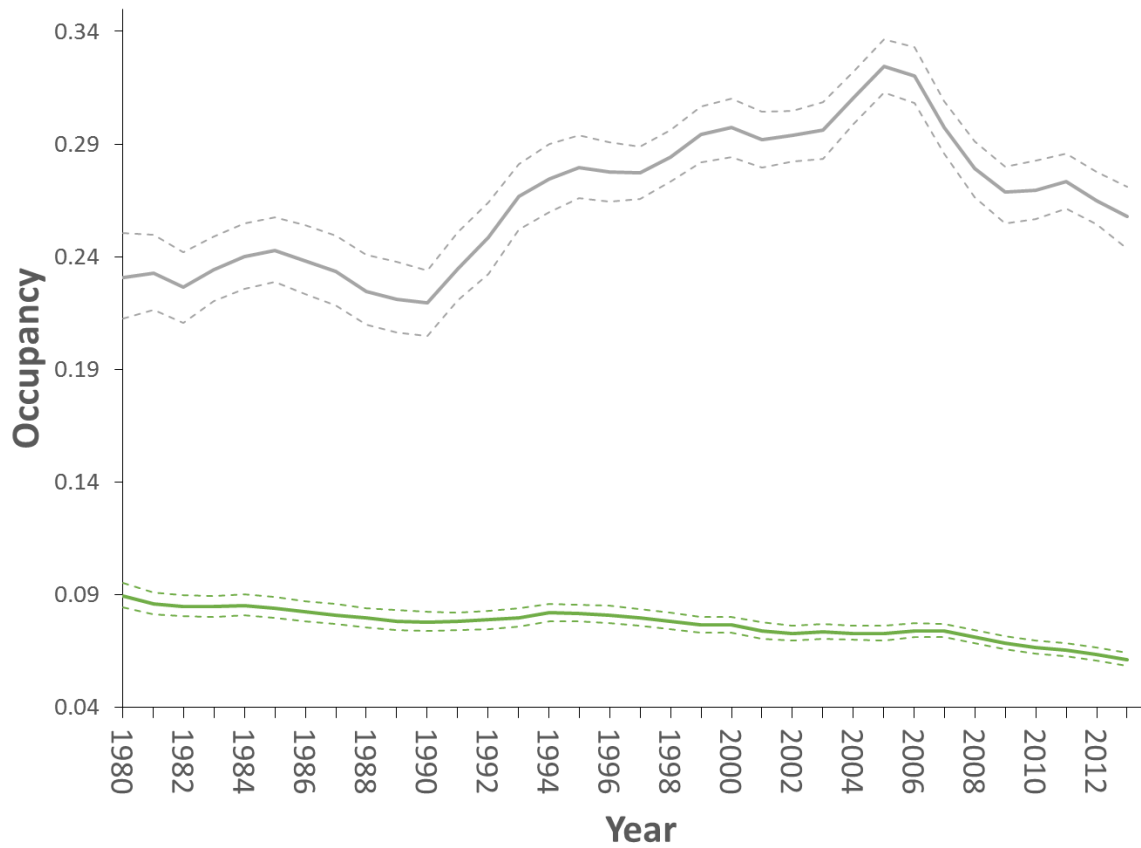
18 b)



19

20

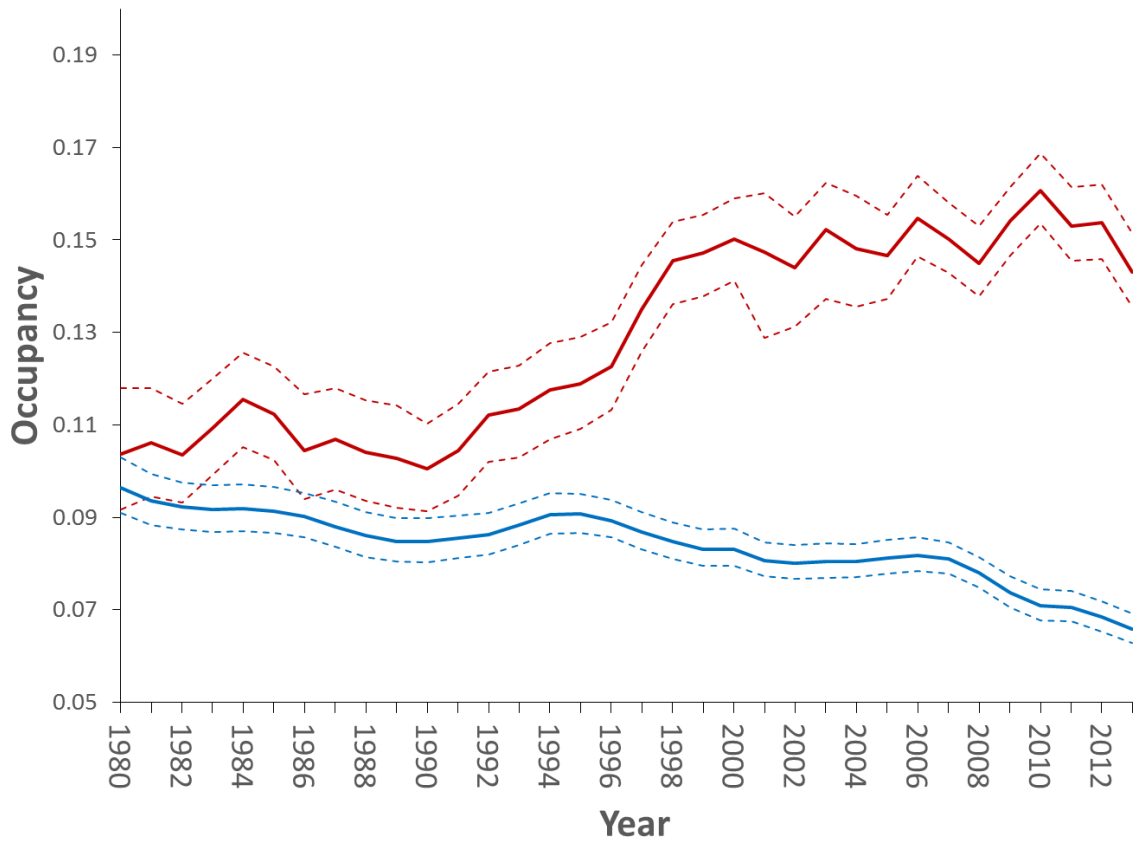
21 **Supplementary Figure 3** Contrasting patterns of change among dominant wild bee crop pollinators
22 (n = 22 species, grey) and other bee species (n = 117 species, green). Trend lines show average
23 occupancy across species within each group, calculated as the geometric mean annual occupancy,
24 dashed lines delimit the 95% credible intervals.



25

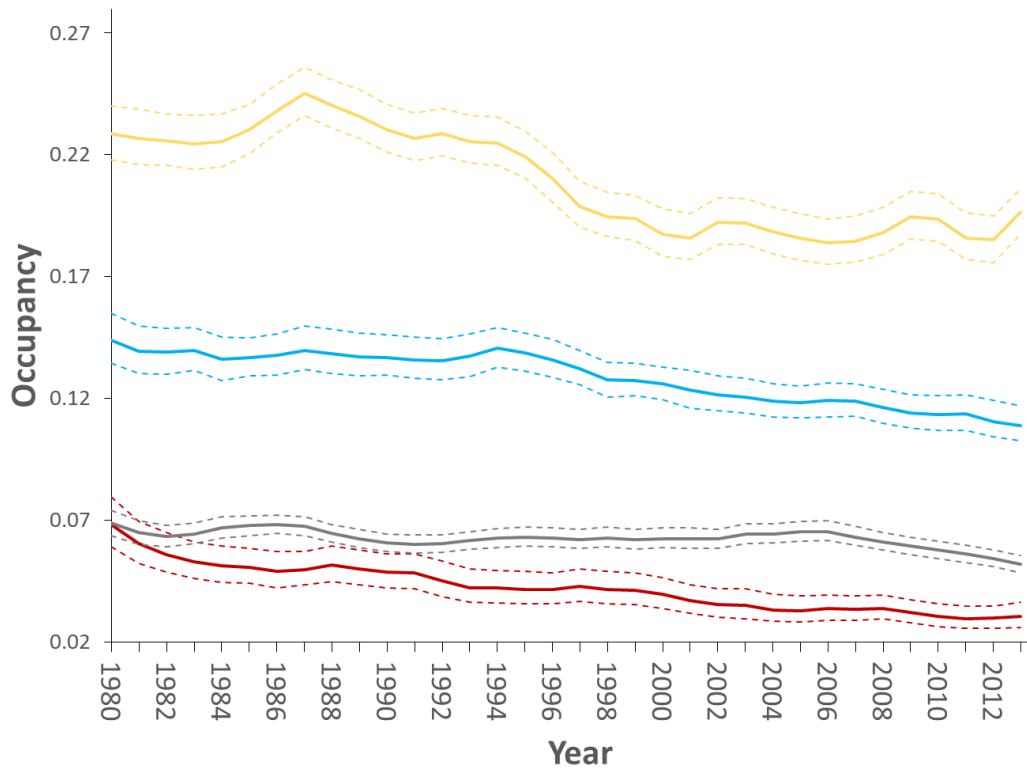
26

27 **Supplementary Figure 4** Contrasting patterns of change among eusocial (n = 21 species, red) and
28 solitary (n = 112 species, blue) bee species. Trend lines show average occupancy across species
29 within each group, calculated as the geometric mean annual occupancy, dashed lines delimits the
30 95% credible intervals.



31
32

33 **Supplementary Figure 5** Contrasting patterns of change among upland (n = 38 species, red),
34 southern (n = 117 species, grey), widespread southern (n = 107, blue) and widespread pollinators
35 species (n = 149 species, yellow). Trend lines show average occupancy across species within each
36 group, calculated as the geometric mean annual occupancy, dashed lines delimits the 95% credible
37 intervals.



39 **Supplementary Figure 6** Species richness maps based on records collected between 1980 and 2013
40 at the 10km grid square scale. Each of the four species clusters derived via CLUSTASPEC are
41 presented: a) upland cluster, b) southern cluster, c) widespread southern cluster, and d) widespread
42 cluster. A list of species within each cluster can be found in Supplementary Table 2

43 **a)**

44

45

46

47

48

49

50

51

52

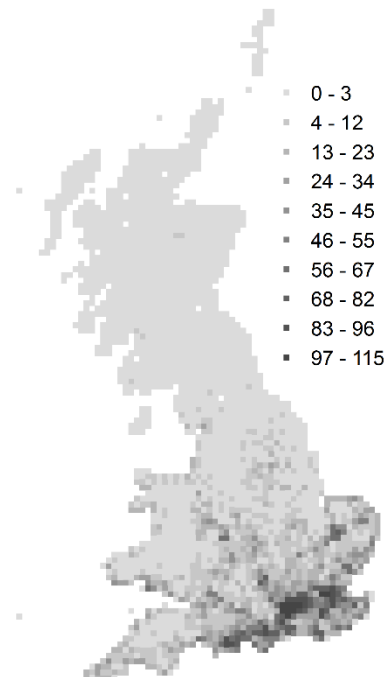
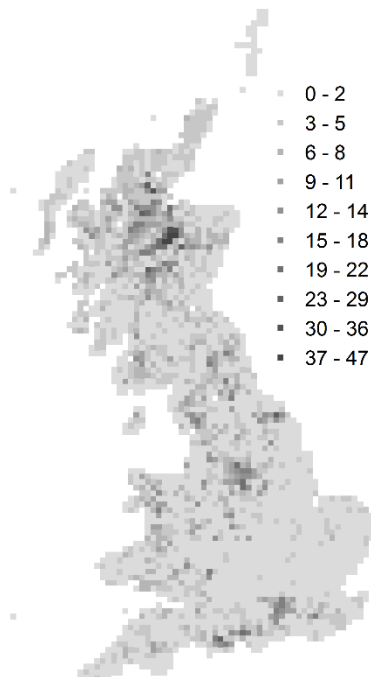
53

54

55

56

b)



57 **c)**

58

59

60

61

62

63

64

65

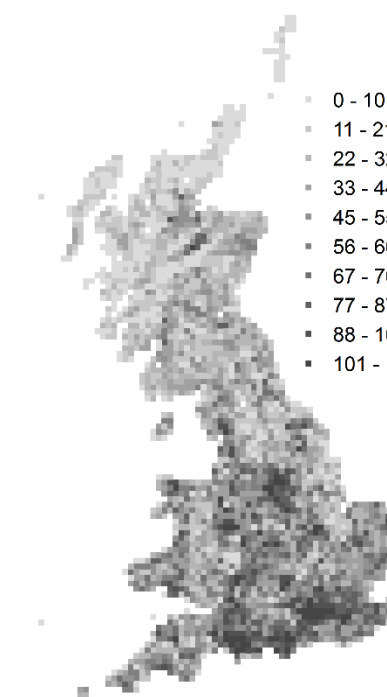
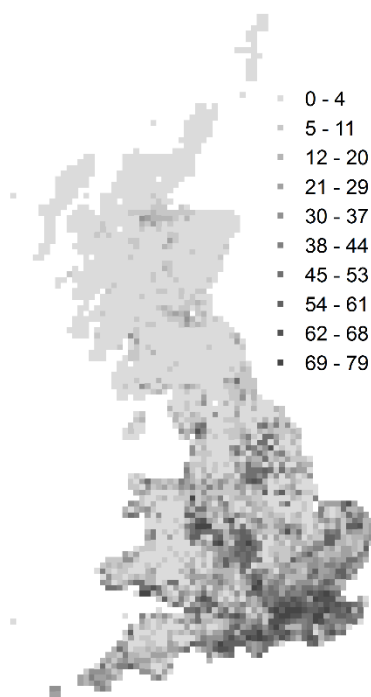
66

67

68

69

d)



70 **Supplementary Table 1** The percentage of species in each trend category based on a 95% level of
71 certainty. Species were classified as having no clear trend, if the 95% credible intervals of the trend
72 spanned zero.

Trend	Taxonomic group		
	Pollinator	Bee	Hoverfly
Increasing	11	14	8
No clear trend	56	44	65
Declining	33	42	27

73

74