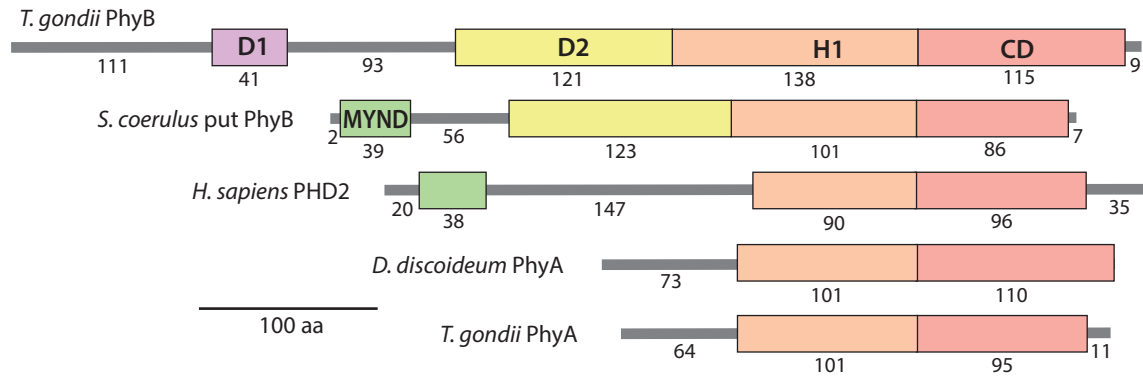


Figure S1



Supplemental Figure S1. PhyB domain architecture.

The H1 and CD homology domains comprise the C-terminus and together represent the catalytic domain of Skp1 PhyA's and PHDs from animals. TgPHYb conserves these domains at its C-terminus (Fig. S2), and in addition possesses another domain called B2 just upstream. TgPHYb has another conserved sequence further upstream, B1, that is not conserved in other TgPHYb candidates.