

FIG S1 Goodness-of-fit plots for the final doravirine population PK model. The solid grey line is the LOWESS smoothed line. The black dashed line in upper panels is the identity line and in the lower right panel is a horizontal line at CWRES = 0. Black dotted lines in the lower right panel are the limits defining outlier observations (-6, 6). Black and grey dots are Phase 1 and 2b/3 data, respectively.

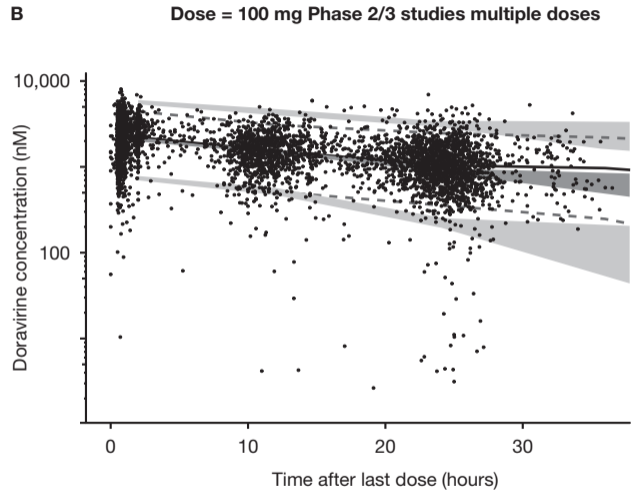
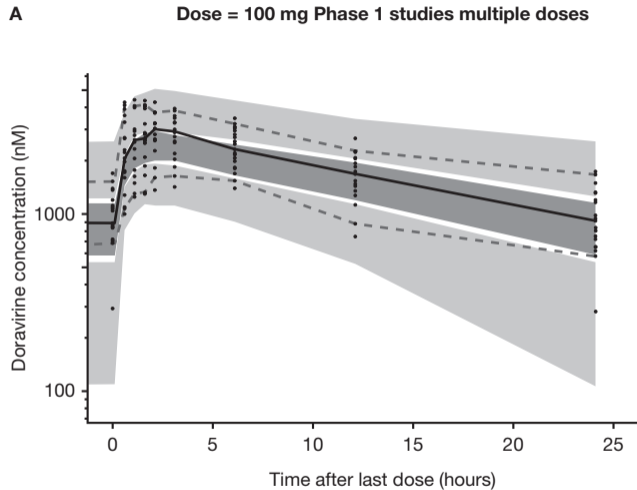


FIG S2 Visual predictive checks of doravirine concentration–time data. Individual markers represent observed concentration–time data. Lines represent the median, 5% and 95% percentiles of the observed data. Shaded areas represent the predicted 90% intervals for the median, 5% and 95% percentiles based on the model.