

SUPPLEMENTAL FIGURES

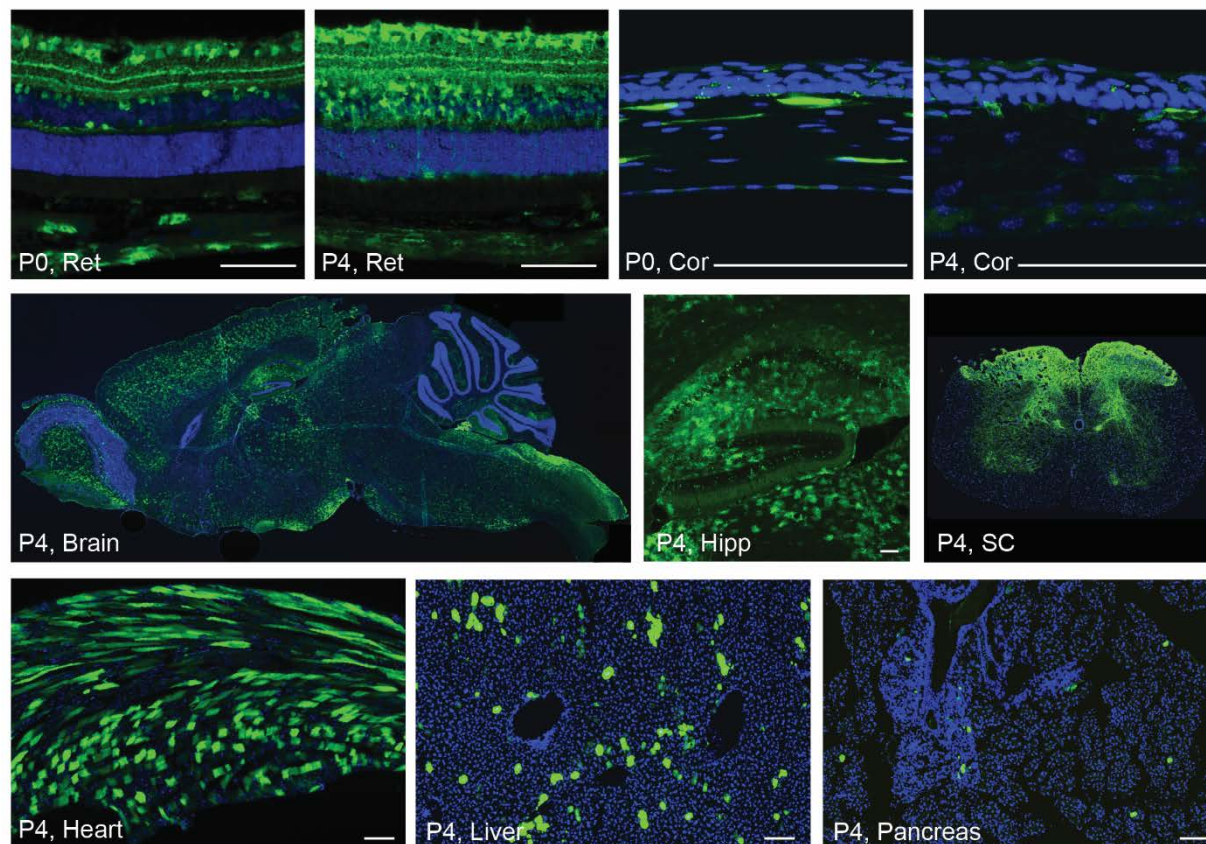


Figure S1. The smCBA Promoter Delivered by Intravenous Injection in Neonatal Mice Showed Ubiquitous Expression

smCBA driving EmGFP-WPRE in rAAV9, was injected intravenously into neonatal mice, and harvested four weeks later. Brain, whole sagittal brain; Cor, cornea (epithelium up); EmGFP, emerald green fluorescent protein; Hipp, hippocampus; P0, post-natal day 0 (injection day); P4, post-natal day 4 (injection day); rAAV9, recombinant adeno-associated virus packaged in capsid 9; Ret, retina (ganglion cells up); SC, lumbar spinal cord (dorsal up); WPRE, woodchuck hepatitis virus posttranscriptional regulatory element. Blue, DAPI; green, anti-GFP. Scale bars, 100 μ m.