

Supplementary Online Content

Krastev T, van Turnhout A, Vriens E, Smits L, van der Hulst R. Long-term Follow-up of Autologous Fat Transfer vs Conventional Breast Reconstruction and Association With Cancer Relapse in Patients With Breast Cancer. *JAMA Surg*. Published online October 10, 2018.

doi:10.1001/jamasurg.2018.3744

eTable. Univariable Cox-regression analysis of oncological events

eFigure 1. Incidence Rate of Locoregional Recurrence in the Subgroups With Stage 0-4 and Triple-Negative and Non-Triple-Negative Breast Cancer Cases

eFigure 2. Incidence Rate of Distant Recurrence in All Patients

eFigure 3. Incidence Rate of the Overall Mortality in All Patients

eFigure 4. Incidence Rate of Breast Cancer-Specific Mortality in All Patients

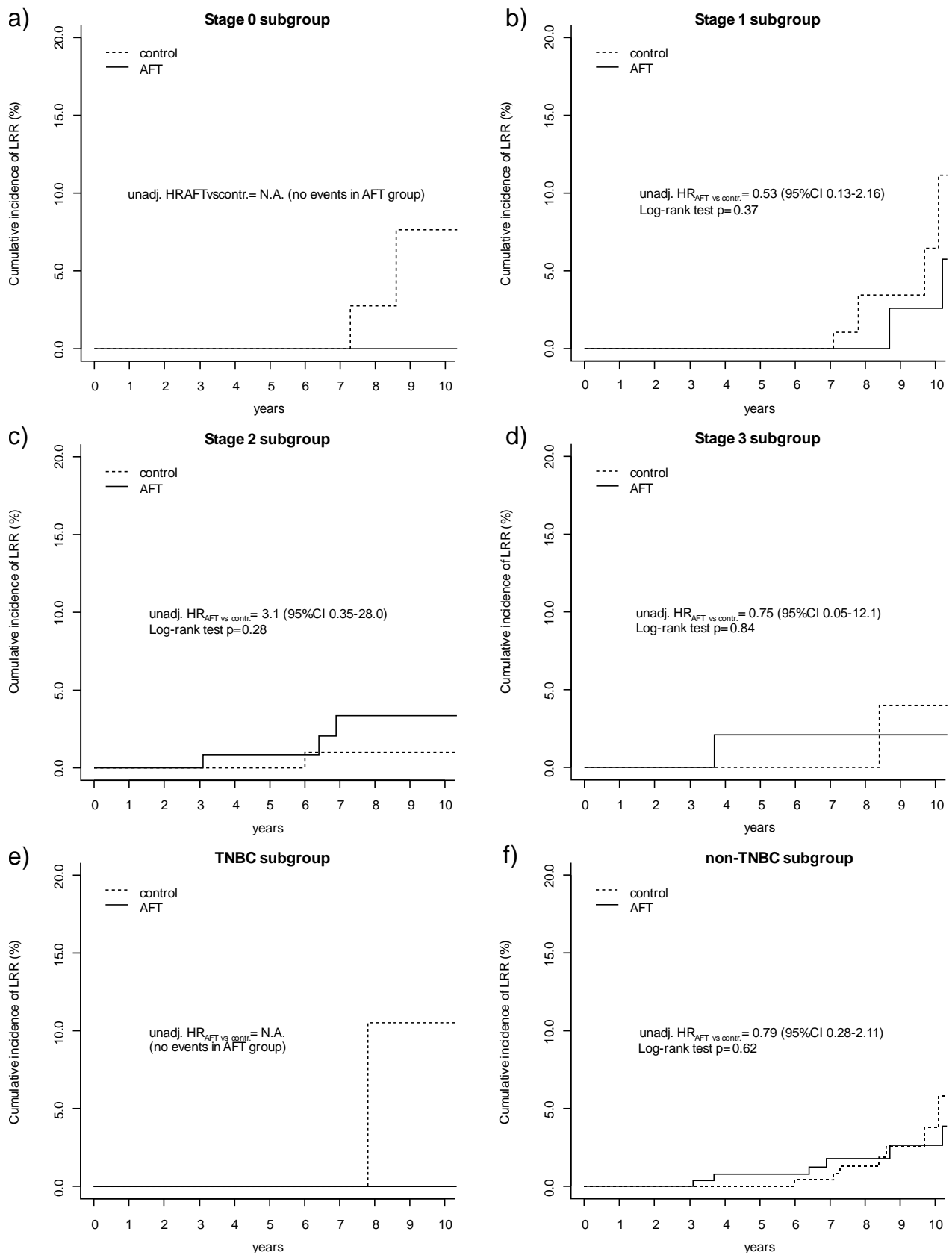
This supplementary material has been provided by the authors to give readers additional information about their work.

eTable: Univariable Cox-regression analysis of oncological events

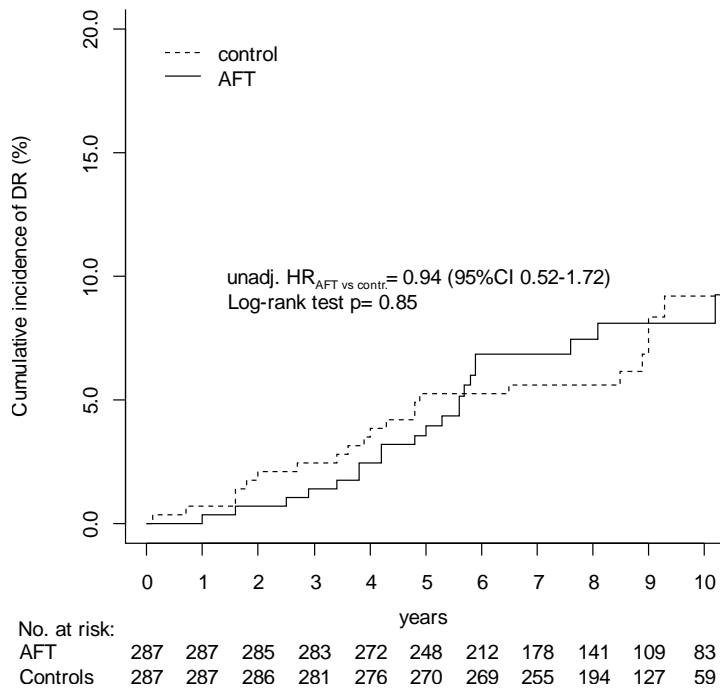
Variables	Locoregional recurrence		Distant recurrence		Overall mortality		Breast cancer-related mortality	
	HR	p-value	HR	p-value	HR	p-value	HR	p-value
Treatment group								
AFT	0.63	0.33	0.94	0.85	0.20	<0.001*	0.37	0.02*
Control	1.59		1.06		4.96		2.69	
Age	1.01	0.77	1.01	0.51	1.03	0.16	1.01	0.64
Type surgery								
BCT	0.94	0.90	0.48	0.02*	0.48	0.03*	0.32	0.02*
MST	1.06		2.11		2.10		3.17	
Invasiveness								
in-situ	0.78	0.74	0.30	0.08	0.47	0.20	0.28	0.18
invasive	1.28		3.30		2.12		3.64	
B&R¹ grade								
1	1.18	0.80	0.15	0.03*	N.A. ²	N.A. ²	N.A. ²	N.A. ²
2	0.79	0.62	1.63	0.11	2.37	0.007*	1.87	0.14
3	1.17	0.75	0.99	0.97	0.76	0.40	0.95	0.91
ER receptor								
Positive	0.73	0.53	1.65	0.20	1.17	0.67	0.86	0.73
Negative	1.37		0.61		0.86		1.17	
PR receptor								
Positive	0.91	0.85	0.92	0.79	1.10	0.78	0.73	0.45
Negative	1.10		1.09		0.91		1.37	
Ner-2-neu receptor								
Overexpression	1.64	0.30	1.25	0.48	1.61	0.13	1.90	0.12
Negative	0.61		0.80		0.62		0.53	
Triple-negative								
TNBC ³	1.39	0.66	0.52	0.36	1.19	0.75	1.65	0.42
Non-TNBC	0.72		1.93		0.84		0.61	
Chemotherapy								
Yes	0.56	0.23	2.83	0.003*	1.83	0.07	5.65	0.002*
No	1.78		0.35		0.55		0.18	
Radiotherapy								
Yes	0.43	0.07	1.97	0.05	1.63	0.15	2.42	0.07
No	2.34		0.51		0.61		0.41	
Hormonal therapy								
Yes	0.92	0.86	2.53	0.006*	2.42	0.01*	3.15	0.02*
No	1.09		0.40		0.41		0.32	
Stage								
0	0.78	0.74	0.30	0.08	0.47	0.20	0.28	0.18
I	2.10	0.11	0.46	0.04*	0.44	0.04*	0.45	0.13
II	0.69	0.47	1.17	0.62	1.05	0.88	0.95	0.91
III	0.57	0.45	2.93	<0.001*	2.84	<0.001*	3.56	0.001*

¹B&R=Bloom & Richardson classification; ²No events in this subgroup; ³TNBC= triple-negative breast cancer.

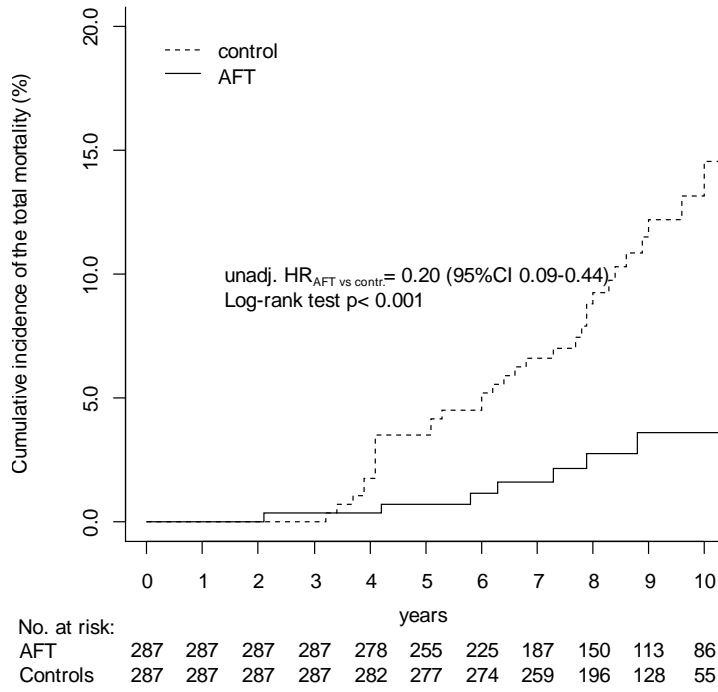
eFigure 1: Incidence rate of locoregional recurrence in the subgroups with stage 0-4 and triple-negative and non-triple-negative breast cancer cases



eFigure 2: Incidence rate of distant recurrence in all patients



eFigure 3: Incidence rate of the overall mortality in all patients



eFigure 4: Incidence rate of breast-cancer specific mortality in all patients

