

Figure S1. Kaplan-Meier survival curves of the prognostic value of CASC9 for patients with lung squamous cell carcinoma from The Cancer Genome Atlas. The patients were divided into low- (blue) and high-expression groups (green) according to the median CASC9 expression levels. CASC9, cancer susceptibility candidate 9. Low-expression examined and high-expression examined indicate censored data in the low- and high-expression groups.

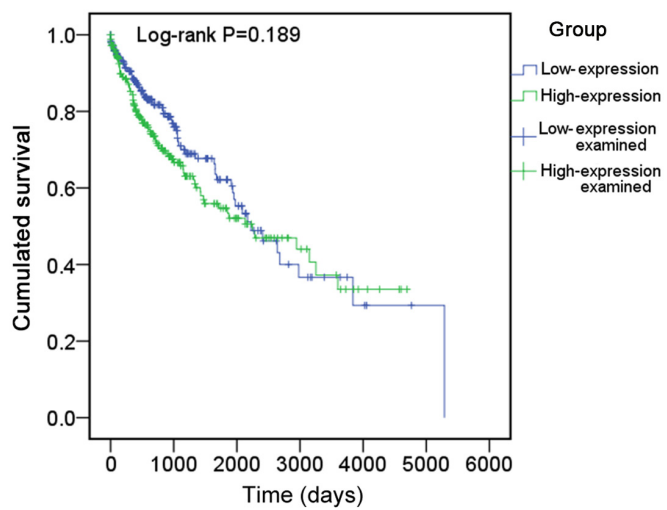


Figure S2. CASC9 siRNA knockdown efficiency. The downregulation of CASC9 RNA was determined by reverse transcription-quantitative polymerase chain reaction following the transfection of siRNA. The plot displays the CASC9 mRNA expression in the form of  $2^{-\Delta Cq}$  for the blank control, cells with scrambled siRNA pool and cells with CASC9 siRNA pool at 0, 48, 72 and 96 h after transfection. CASC9, cancer susceptibility candidate 9; siRNA, small interfering RNA. \*\* $P < 0.01$  and \*\*\* $P < 0.001$ .

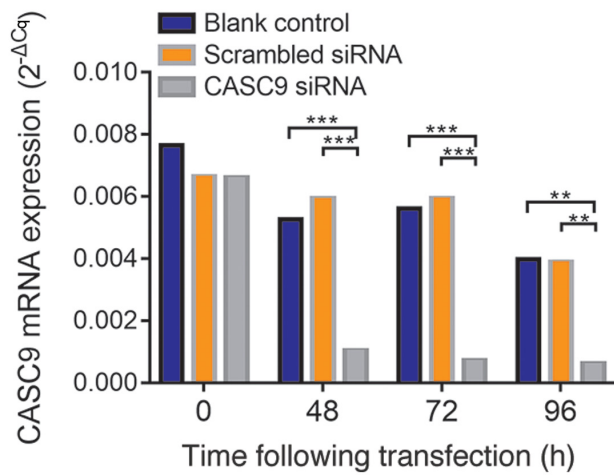


Table SI. Sequences of the selected siRNAs used in the present study.

siRNA	Sequence (5'-3')
si-CASC9 #1	GTCTTCACATTCCTTTAA
si-CASC9 #2	GACTTCAAATAGCTATTT
si-CASC9 #3	CCAGACAGCAGCAAAGCAA
si-CASC9 #4	CCATTCTAAACATAAGTTA
Scrambled si-CASC9 #1	GCTTTAACTCCTTTACTTA
Scrambled si-CASC9 #2	GGTTTACATATATTCACAA
Scrambled si-CASC9 #3	GCCGCAAACGACGAAACAA
Scrambled si-CASC9 #4	GTTCAATACACCTAAATTA

siRNA, small interfering RNA; CASC9, cancer susceptibility candidate 9.