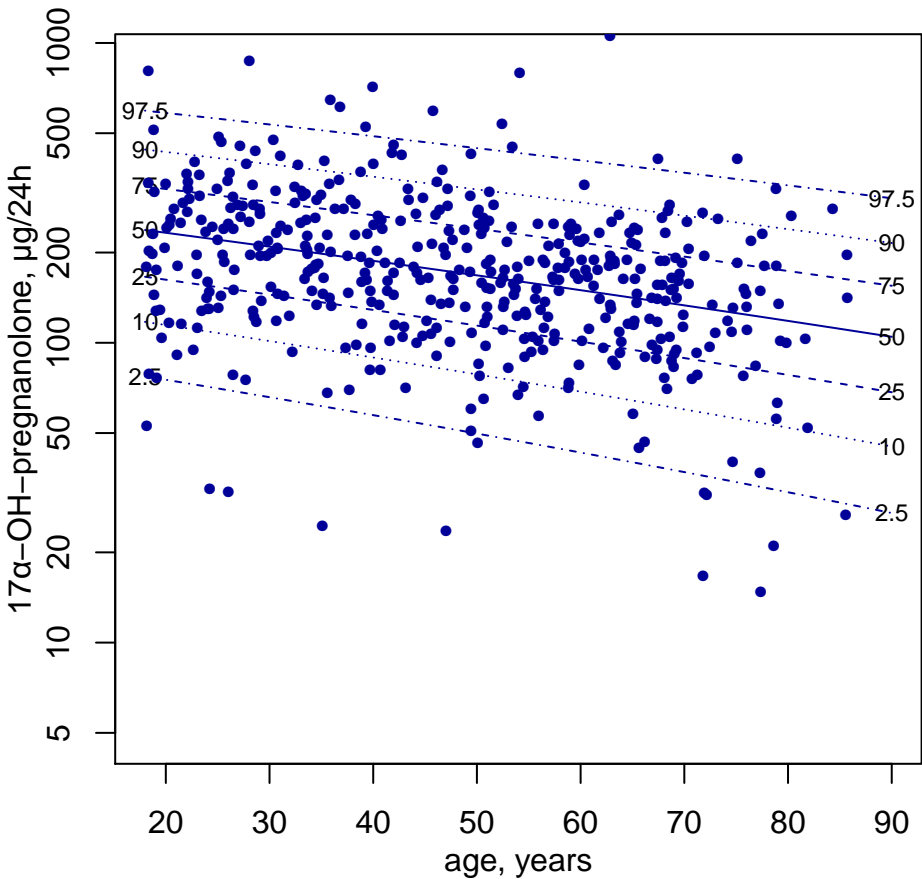
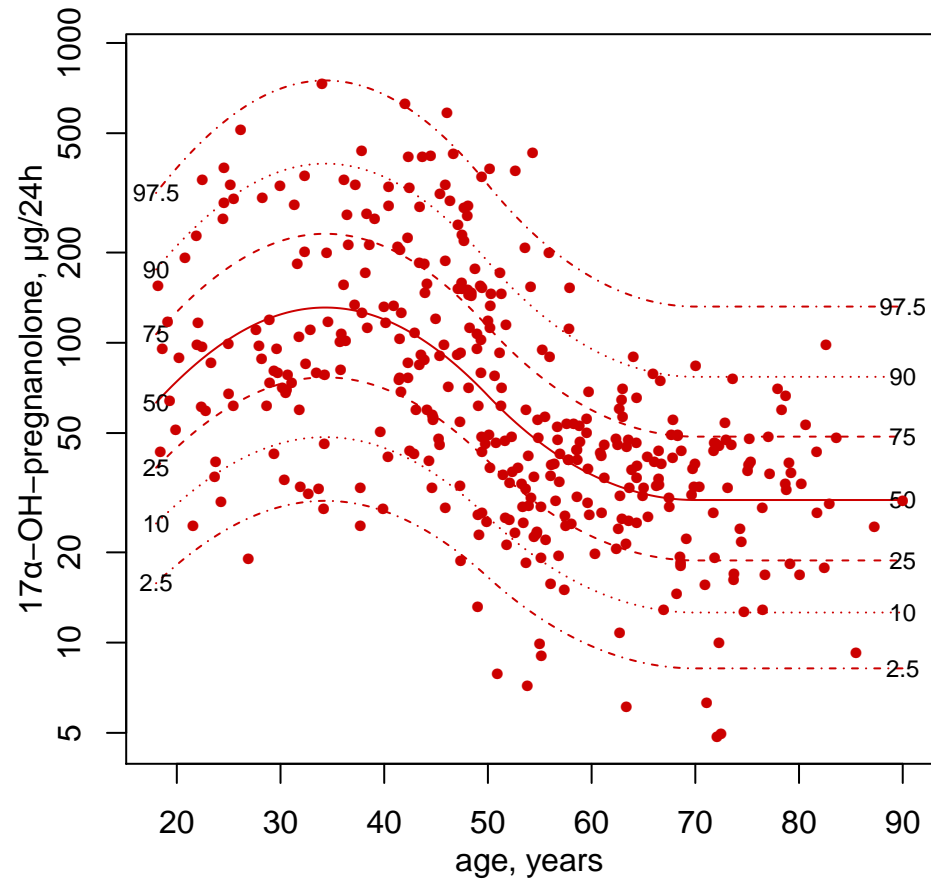


**Supporting Figure 4. Reference curves of steroid compounds.** Reference curves of the 40 steroid compounds measured in urine are shown including one steroid compound per page. The percentiles 2.5, 10, 25, 50, 75, 90 and 97.5 of the steroid compounds in function of age and sex are shown on a log-scale. To improve comparison the same scale has been used for men and women.

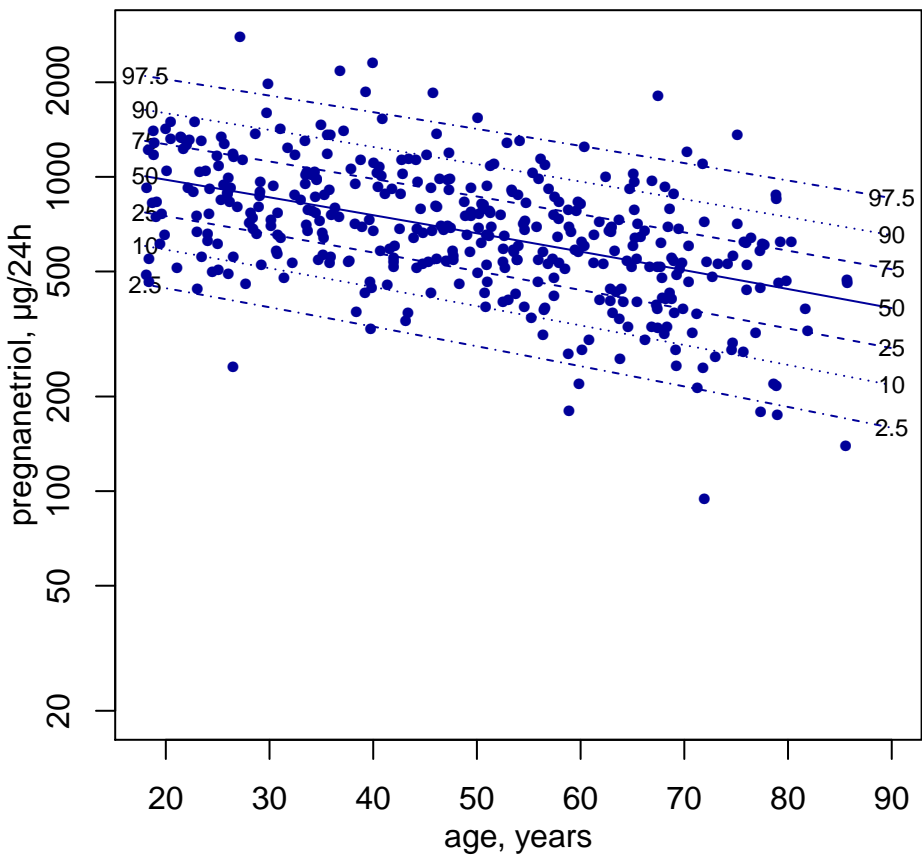
## Men



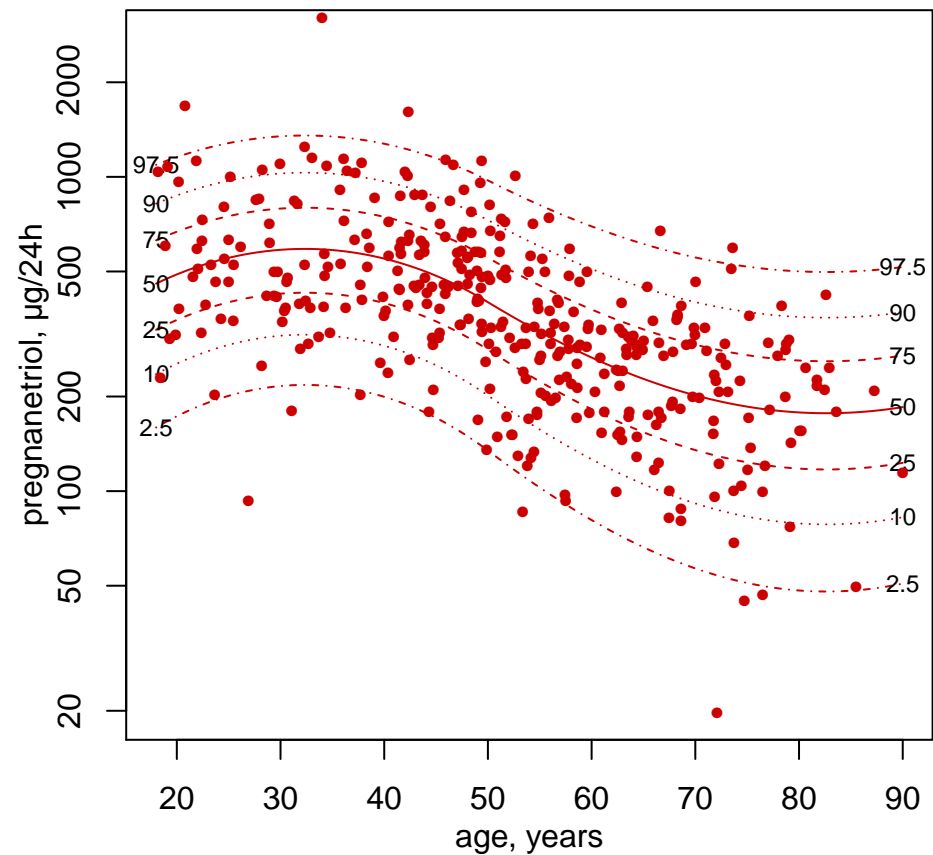
## Women



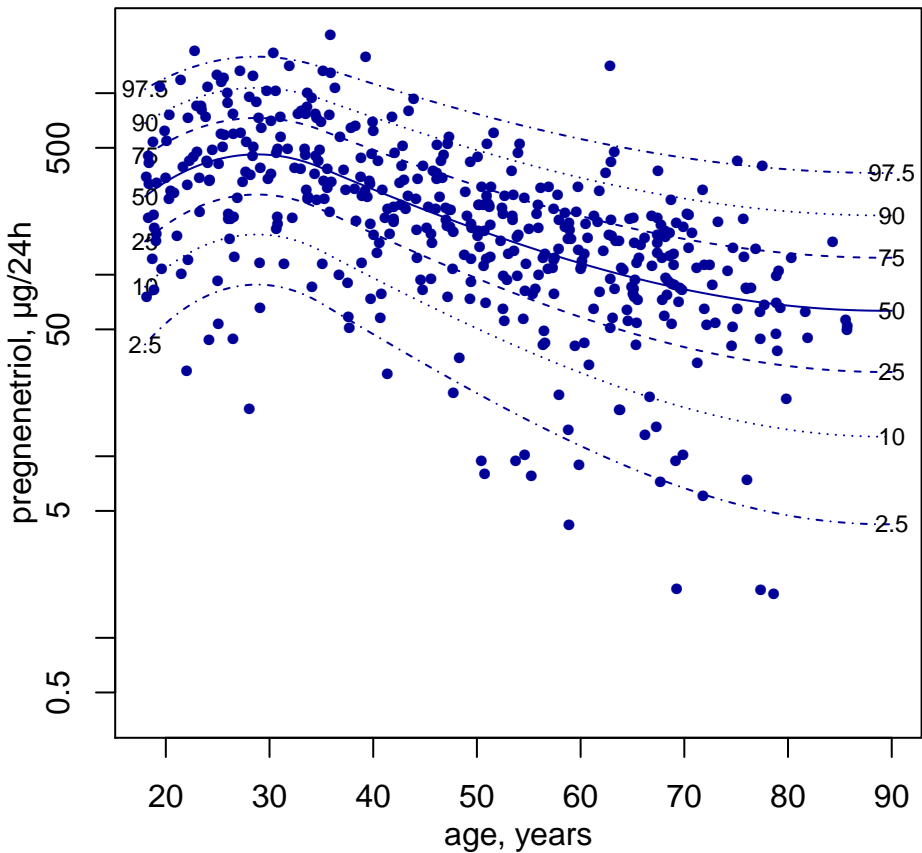
## Men



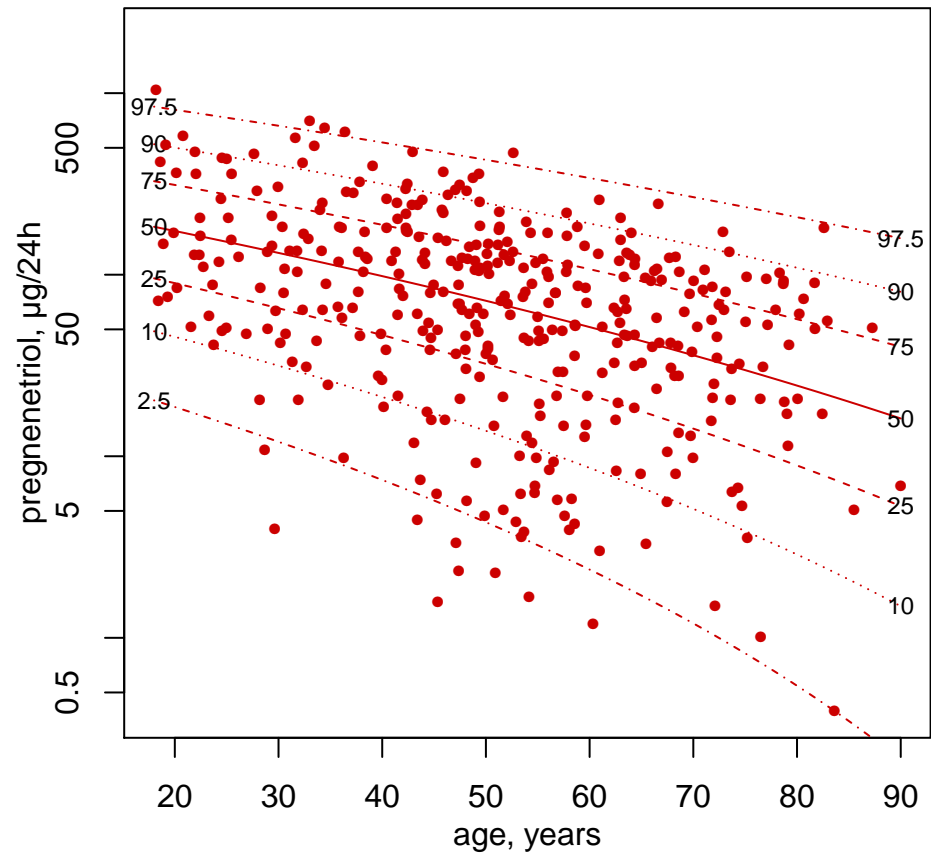
## Women



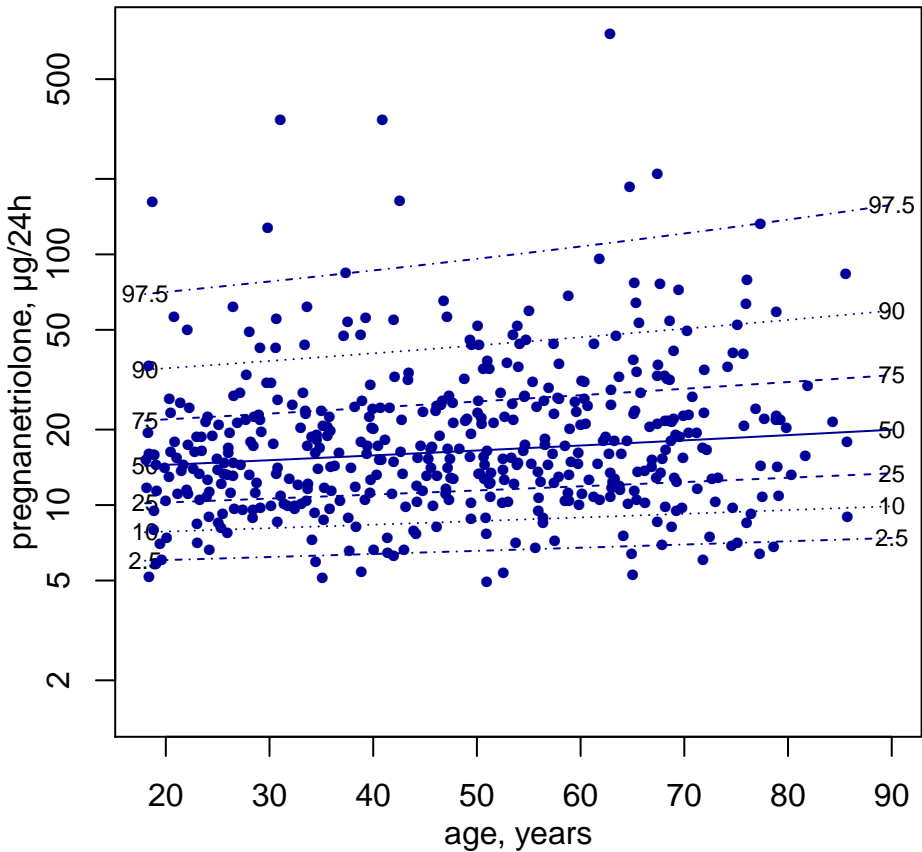
## Men



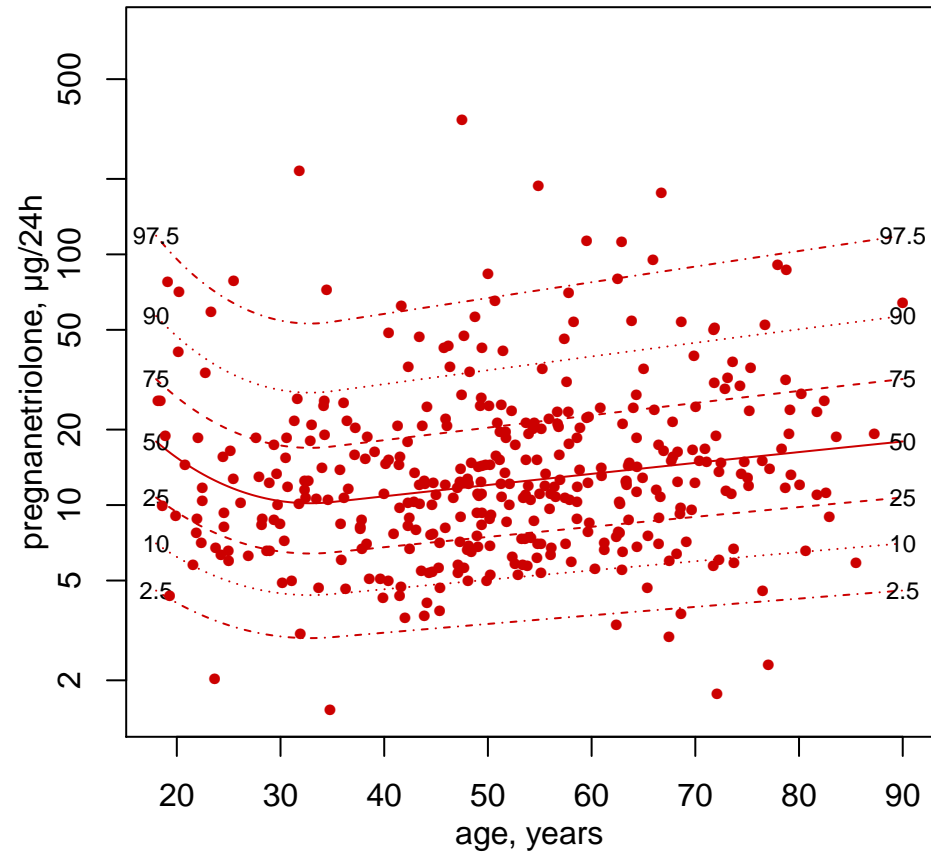
## Women



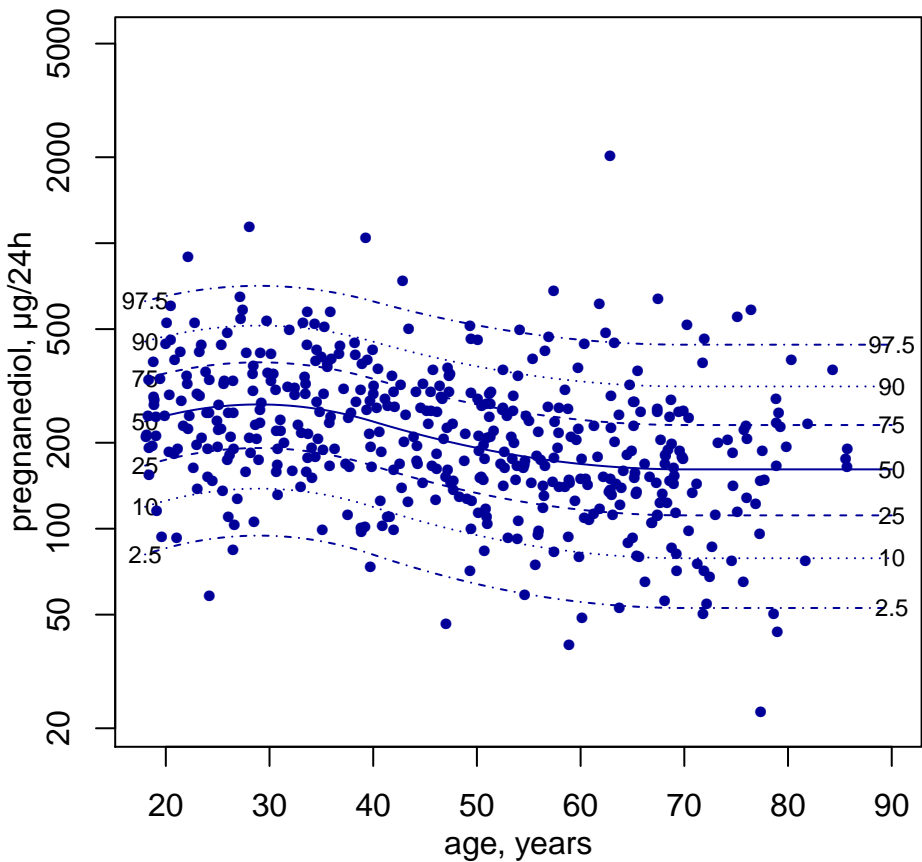
## Men



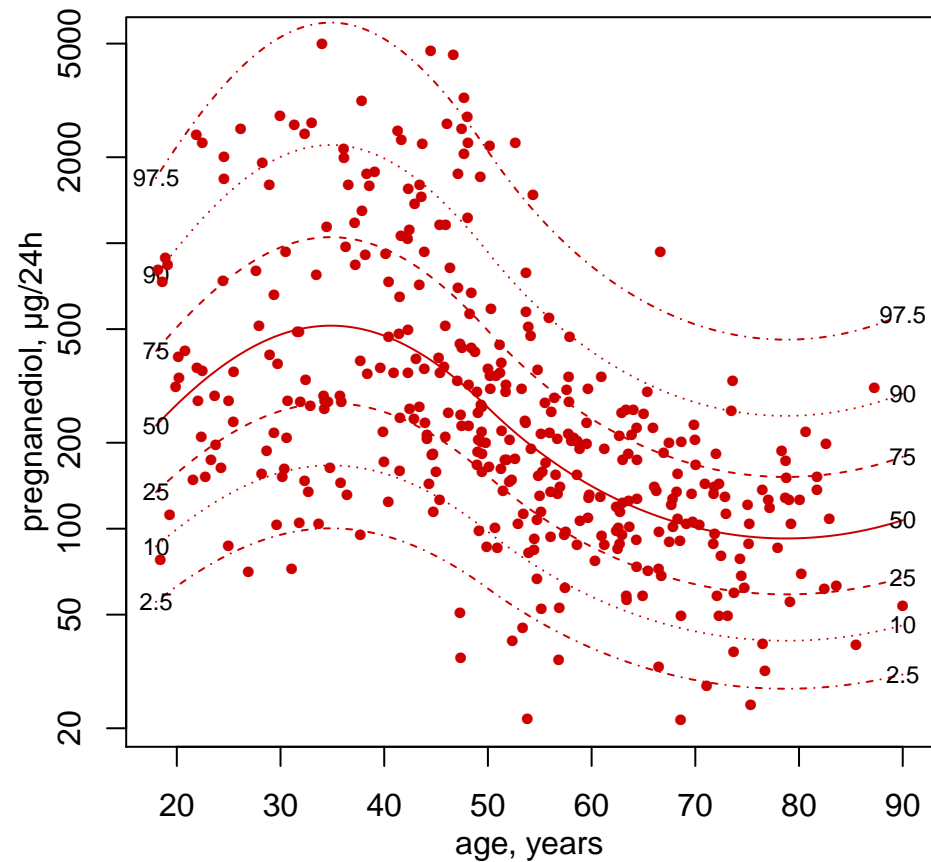
## Women



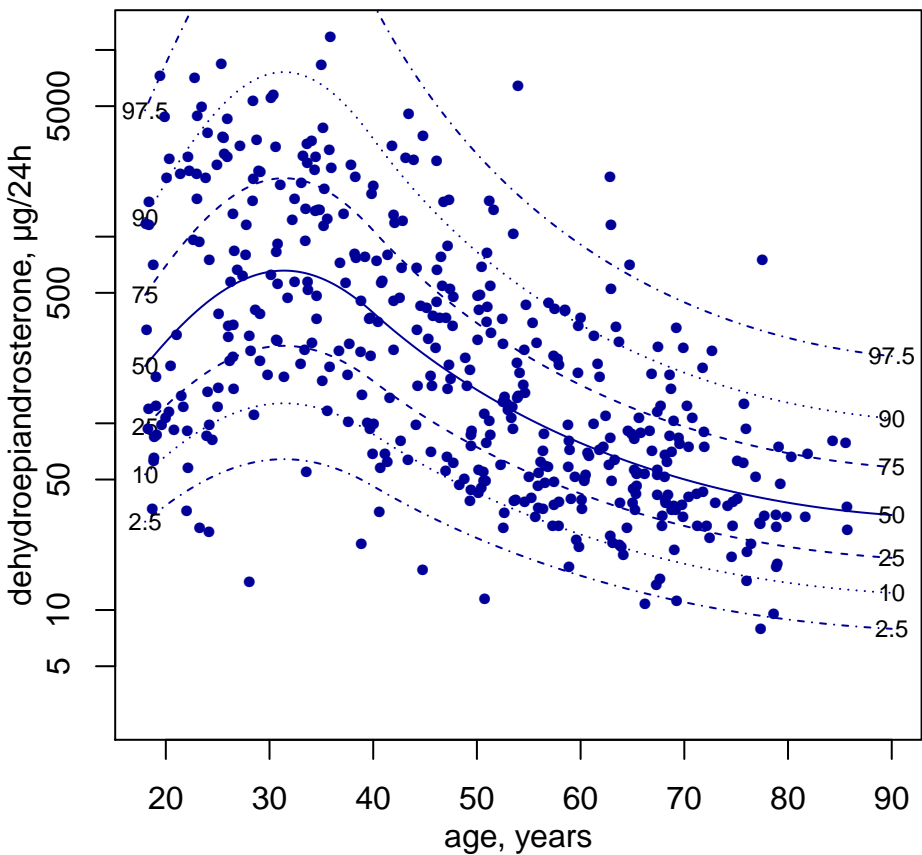
## Men



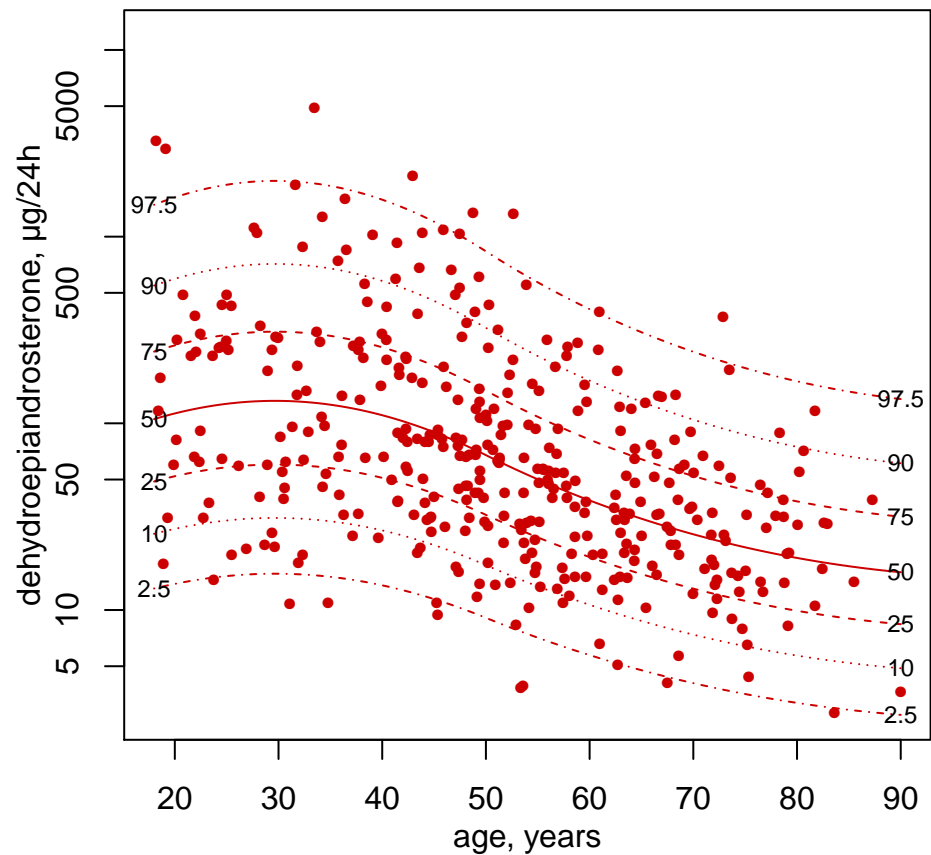
## Women



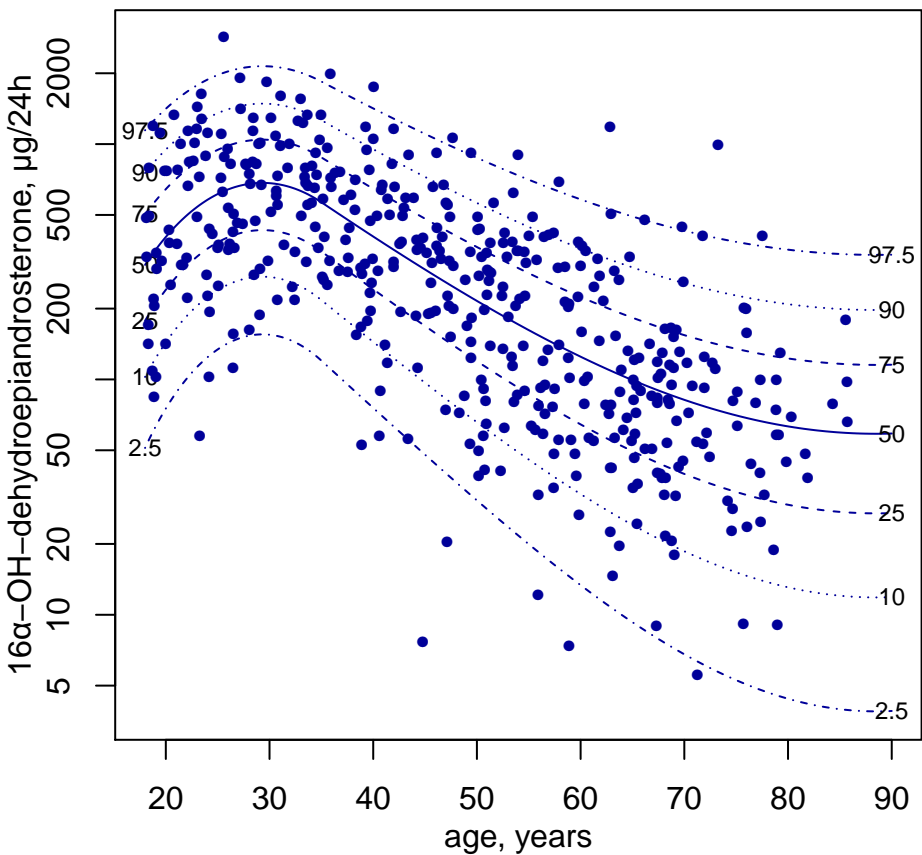
## Men



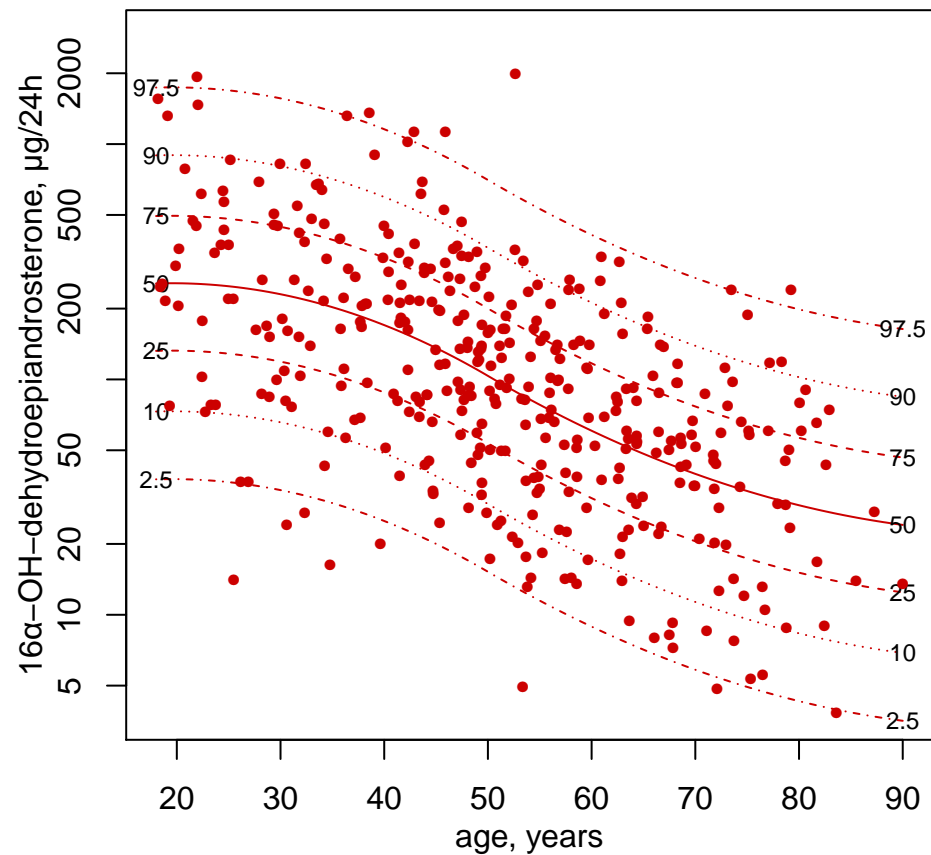
## Women



## Men

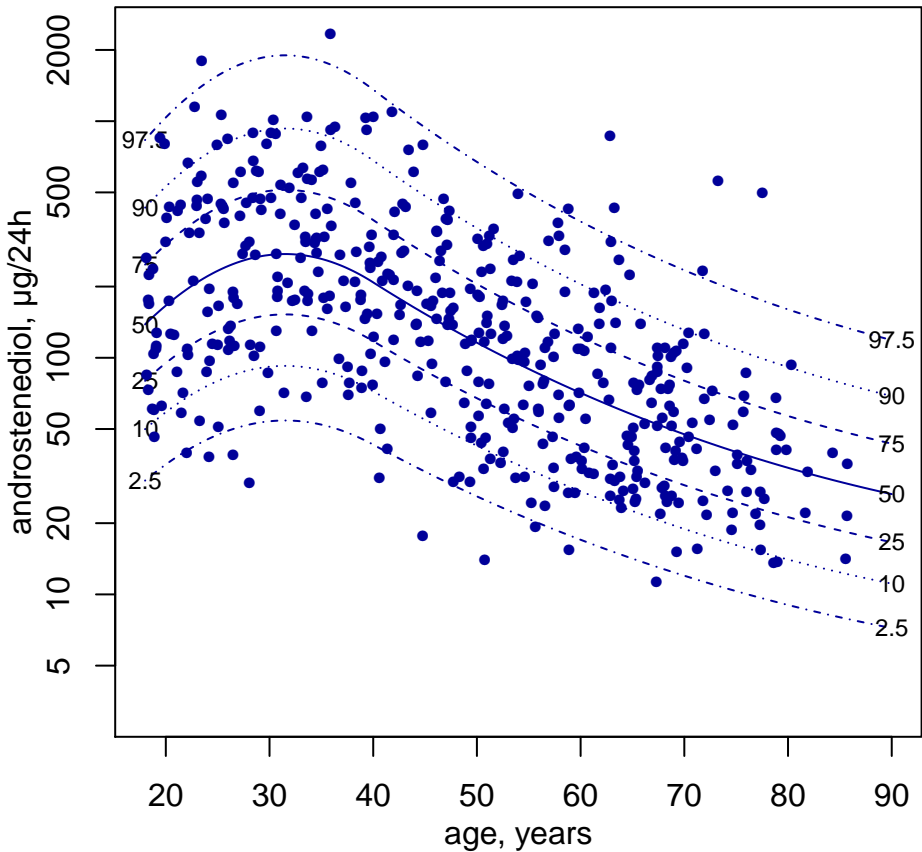


## Women

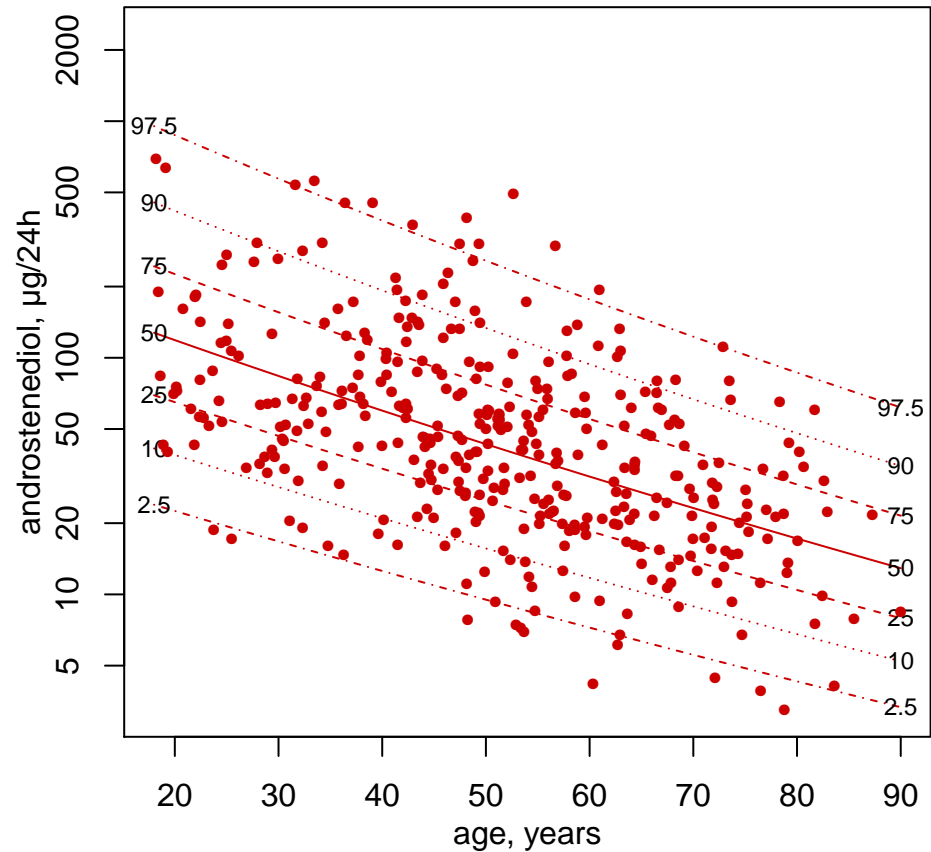




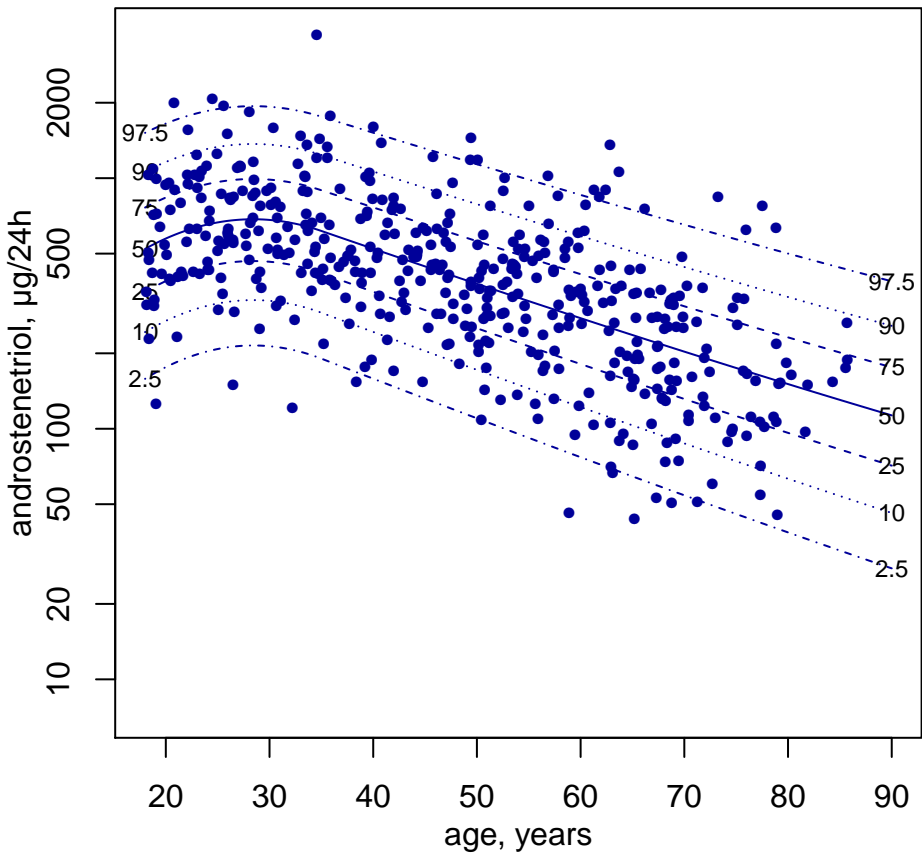
## Men



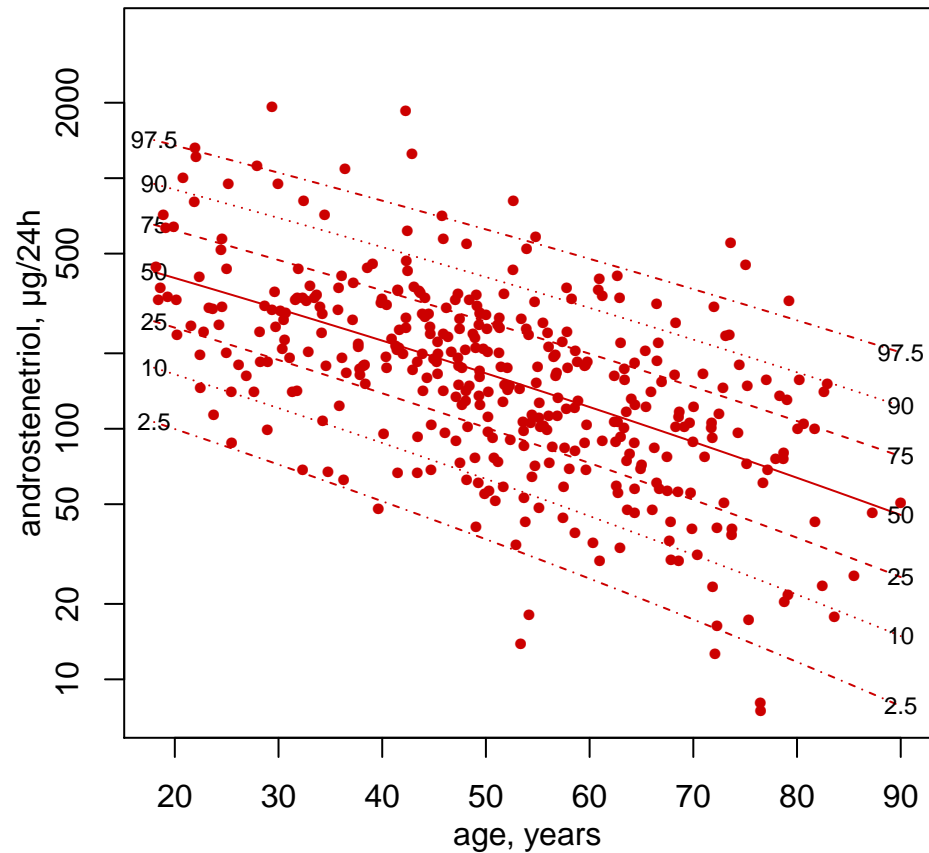
## Women



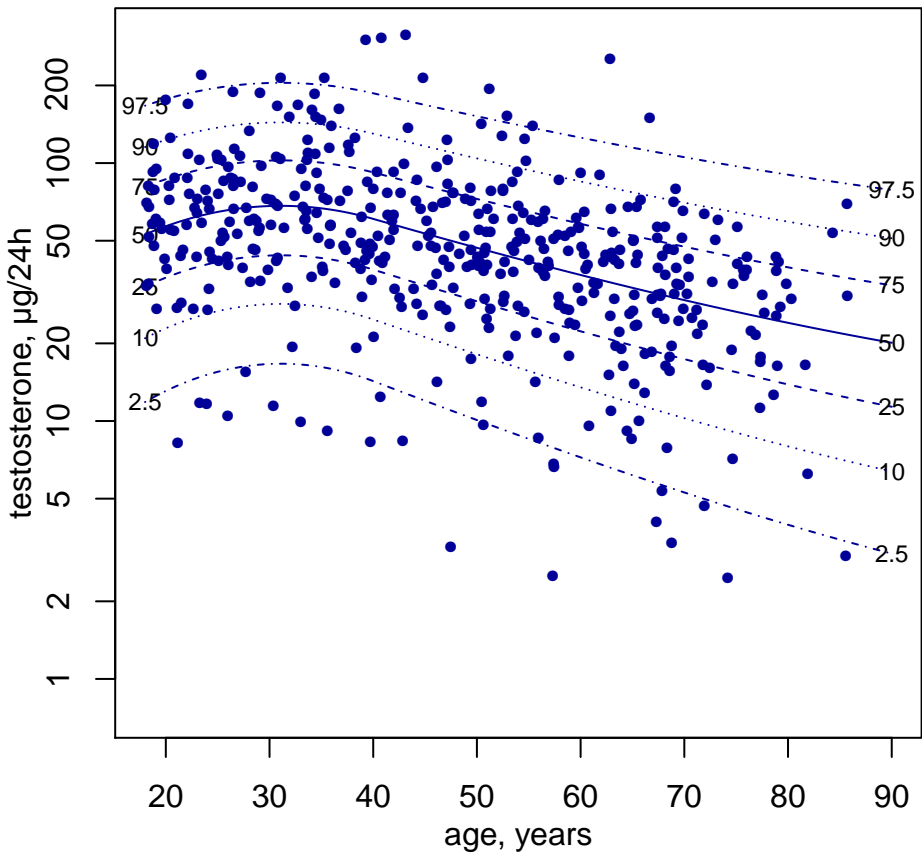
## Men



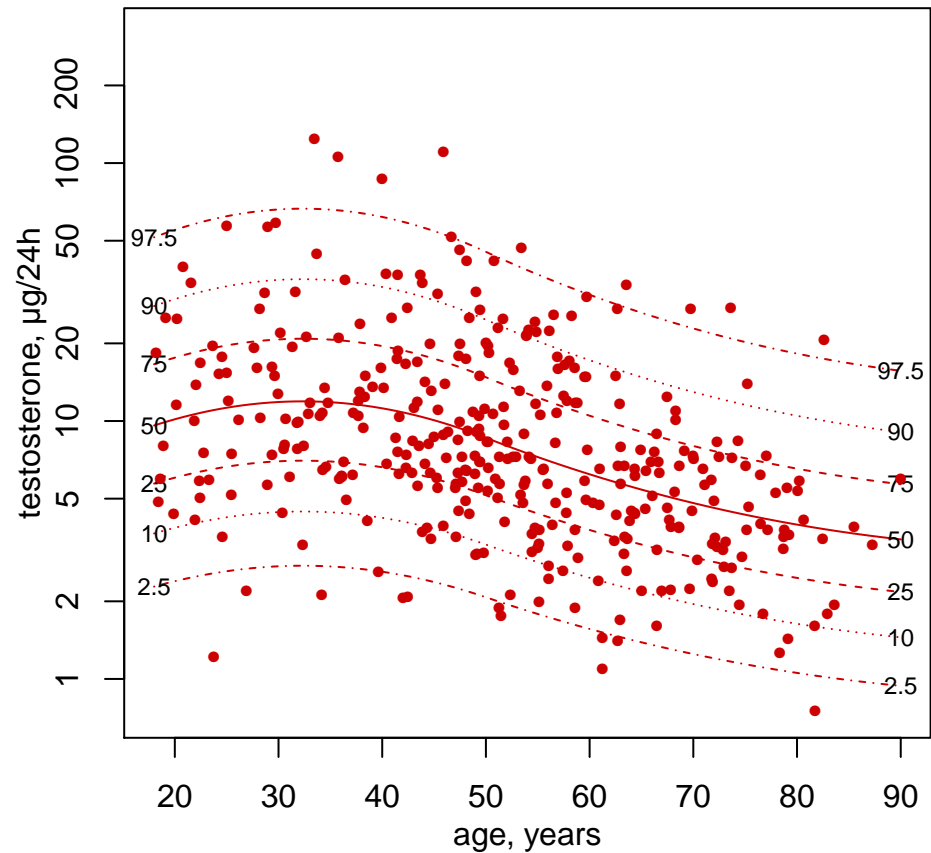
## Women



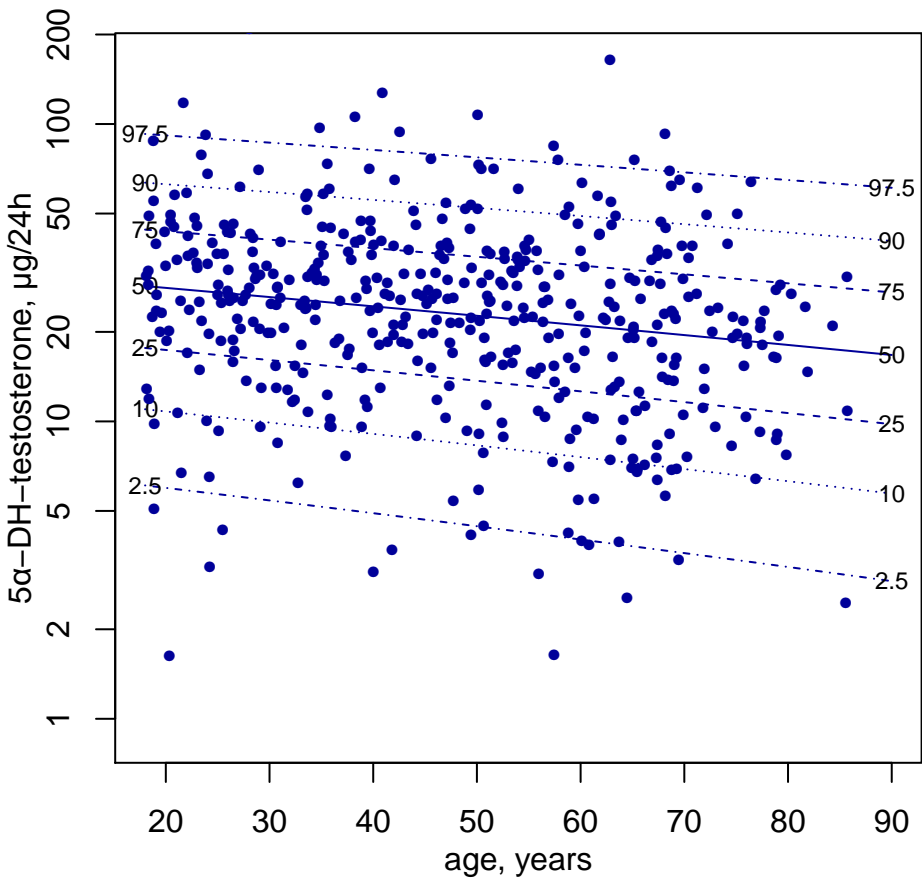
## Men



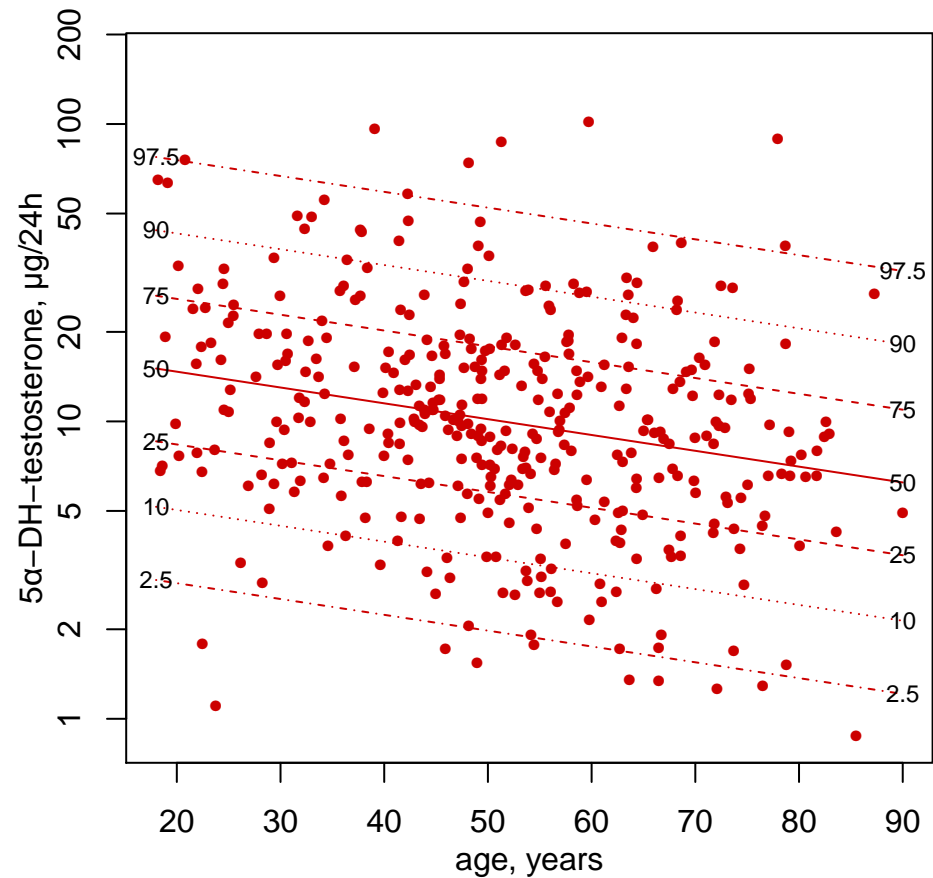
## Women



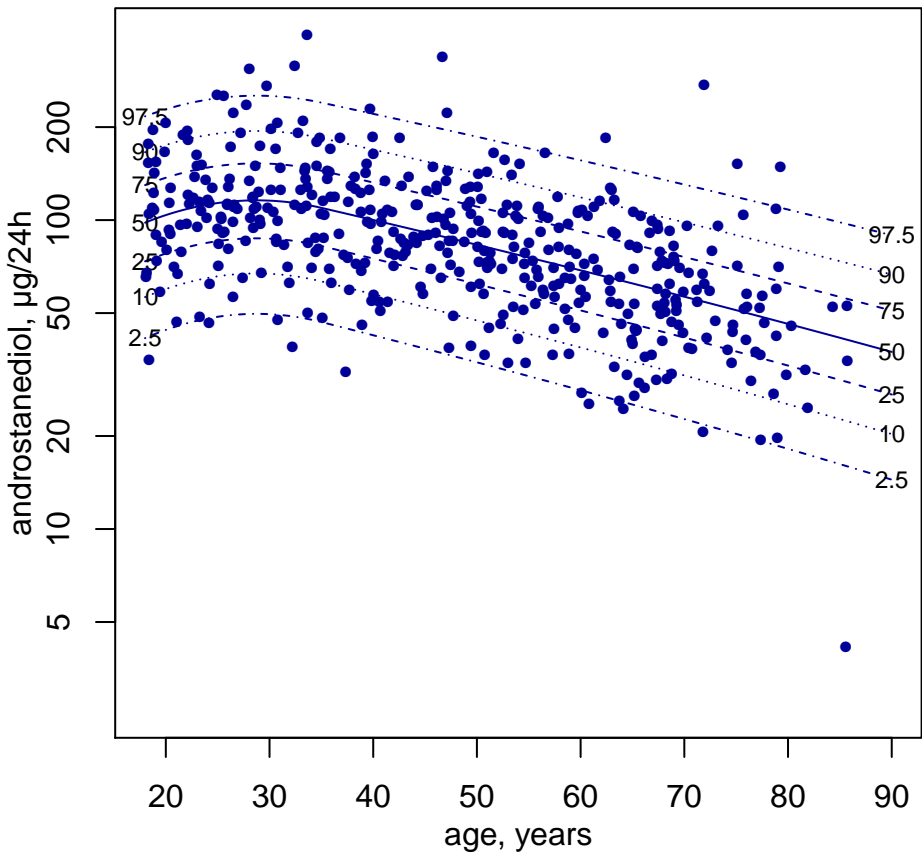
## Men



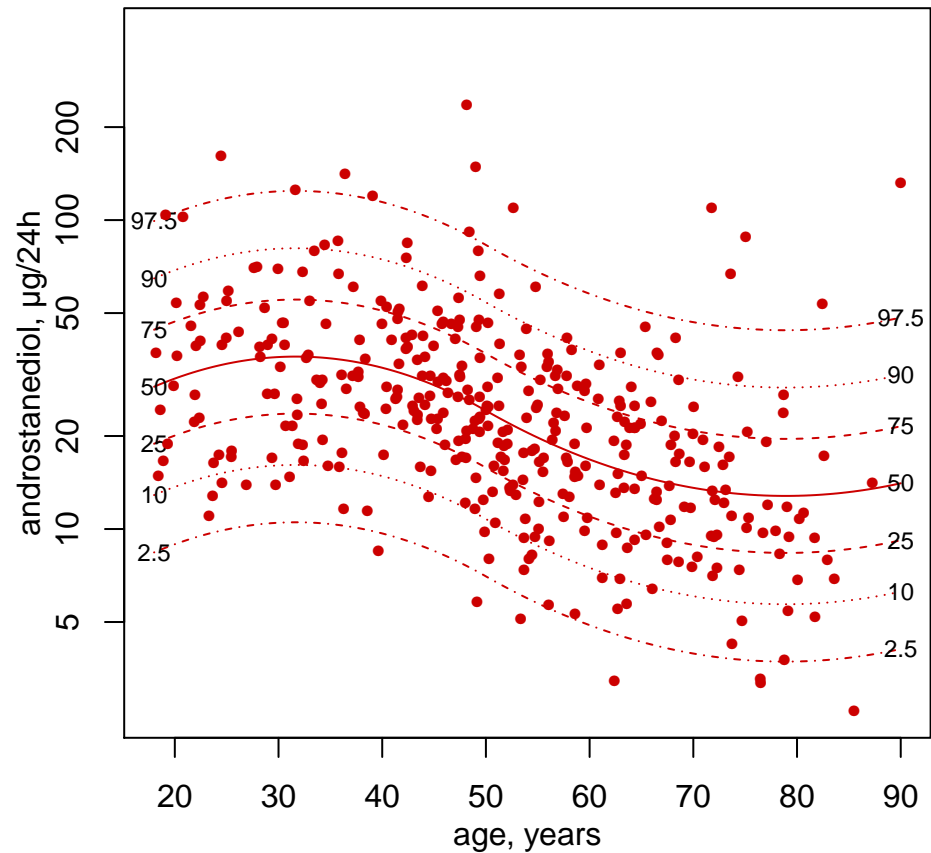
## Women



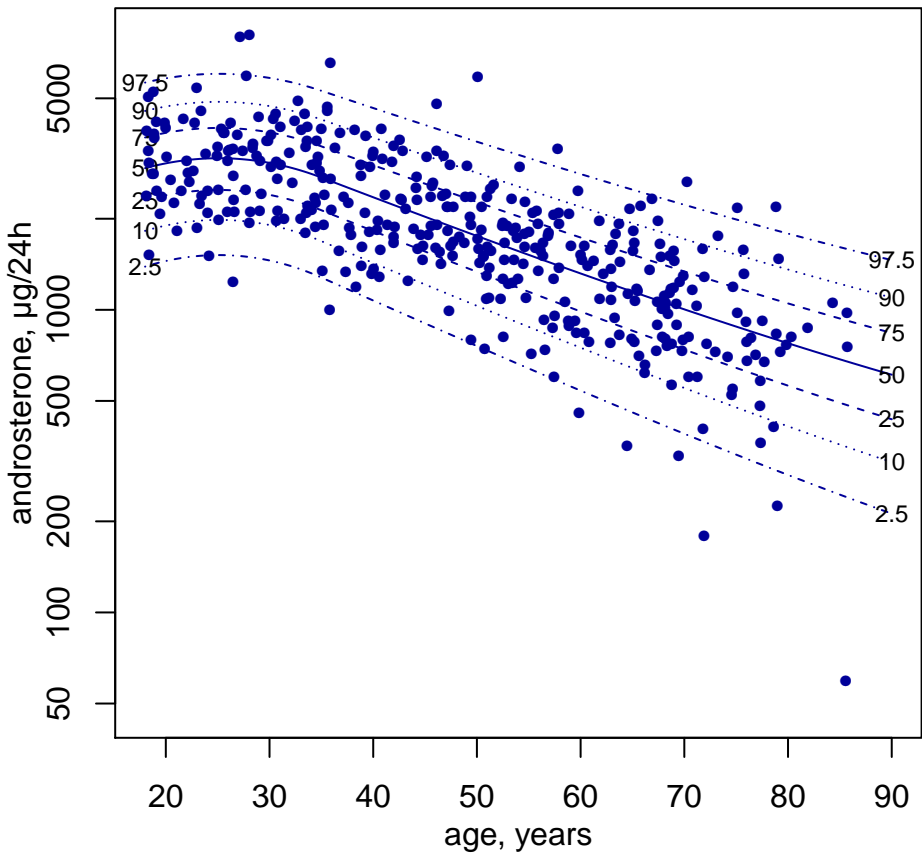
## Men



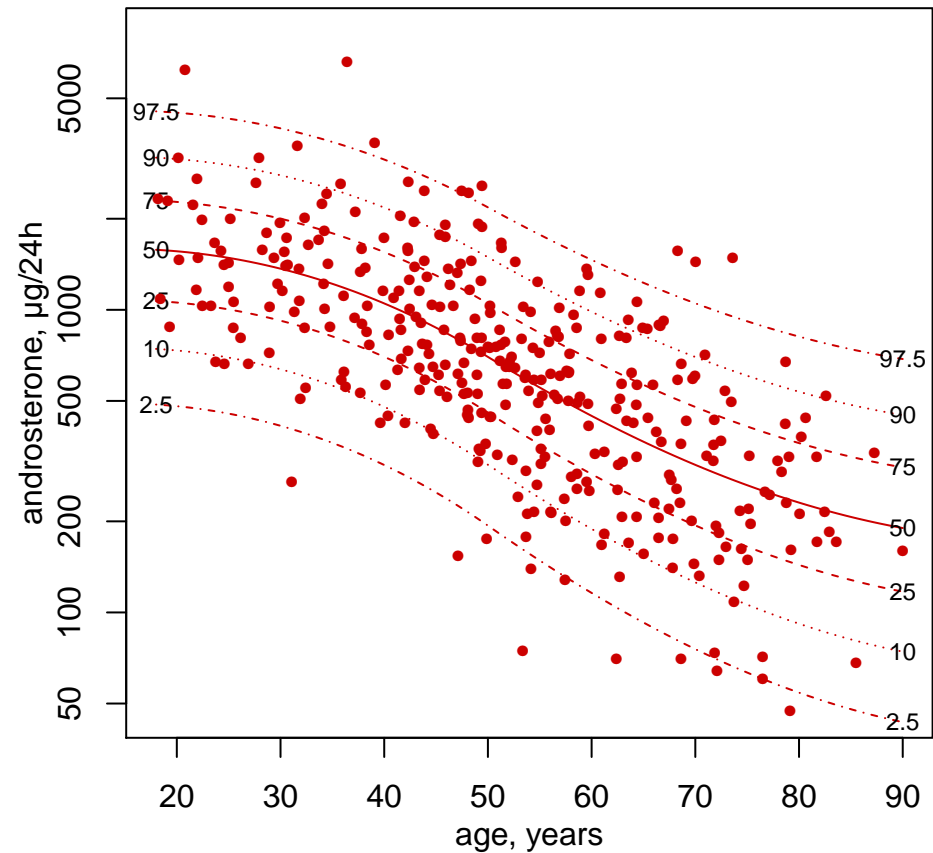
## Women

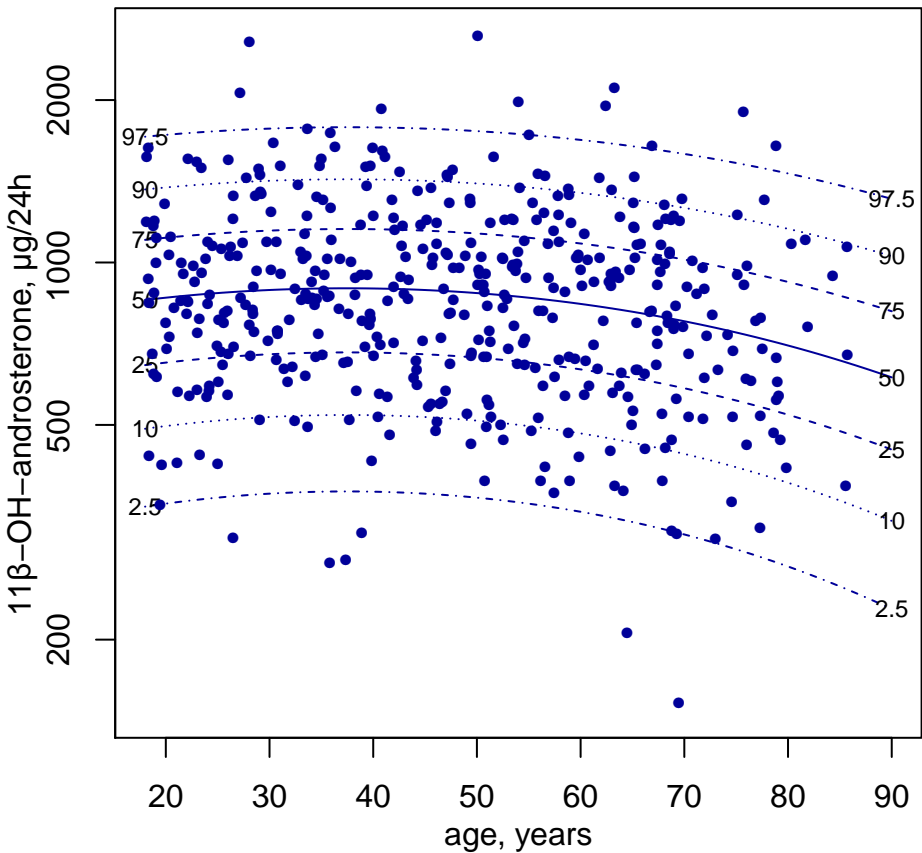
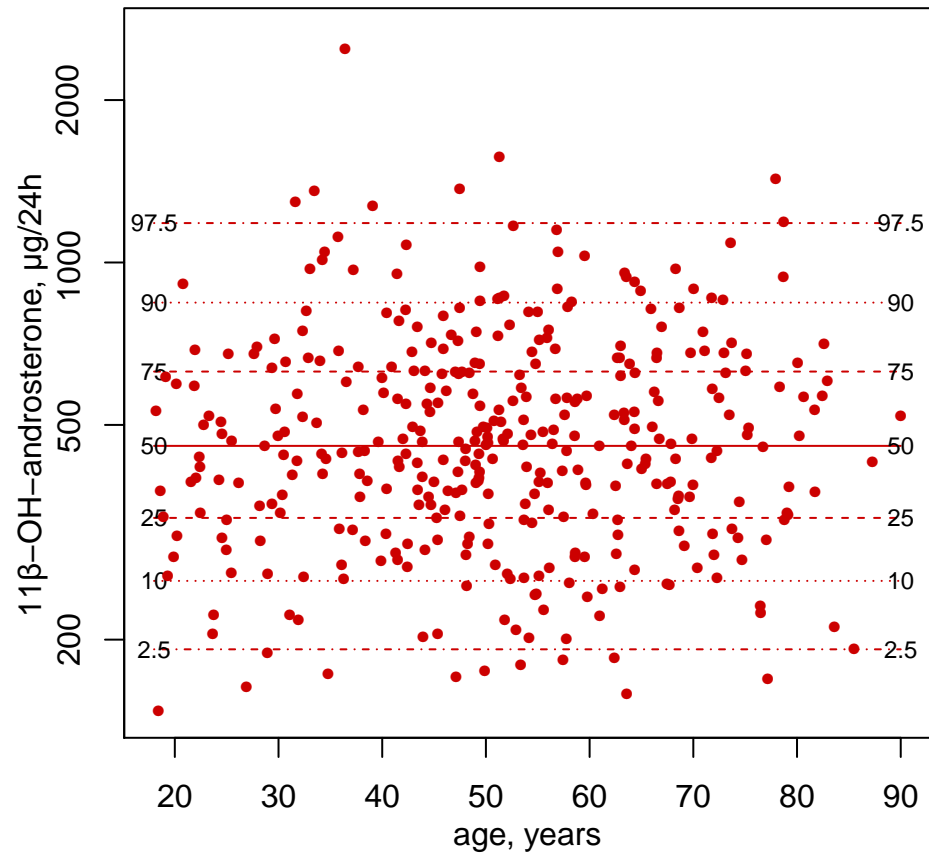


## Men

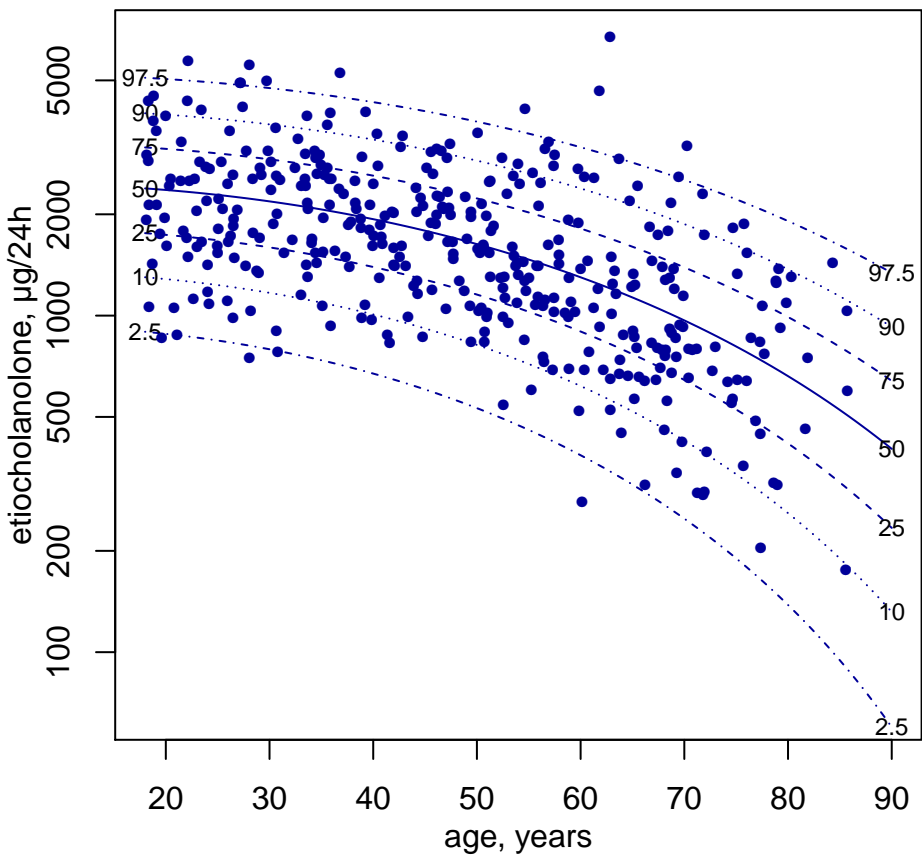


## Women

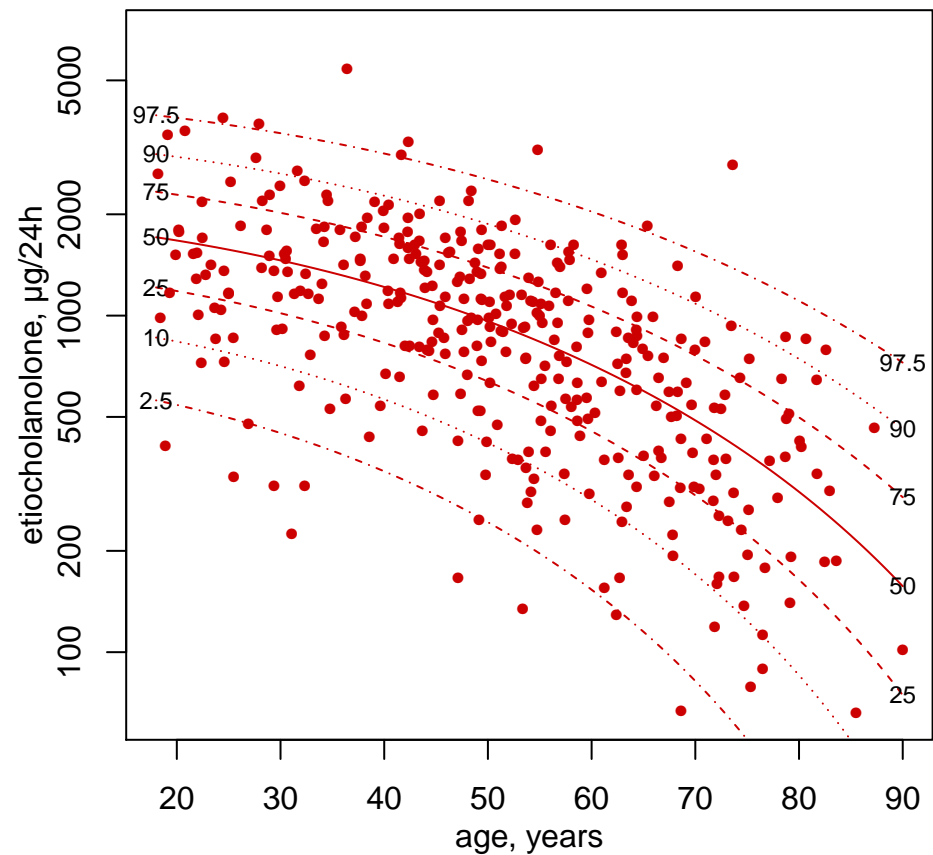


**Men****Women**

## Men

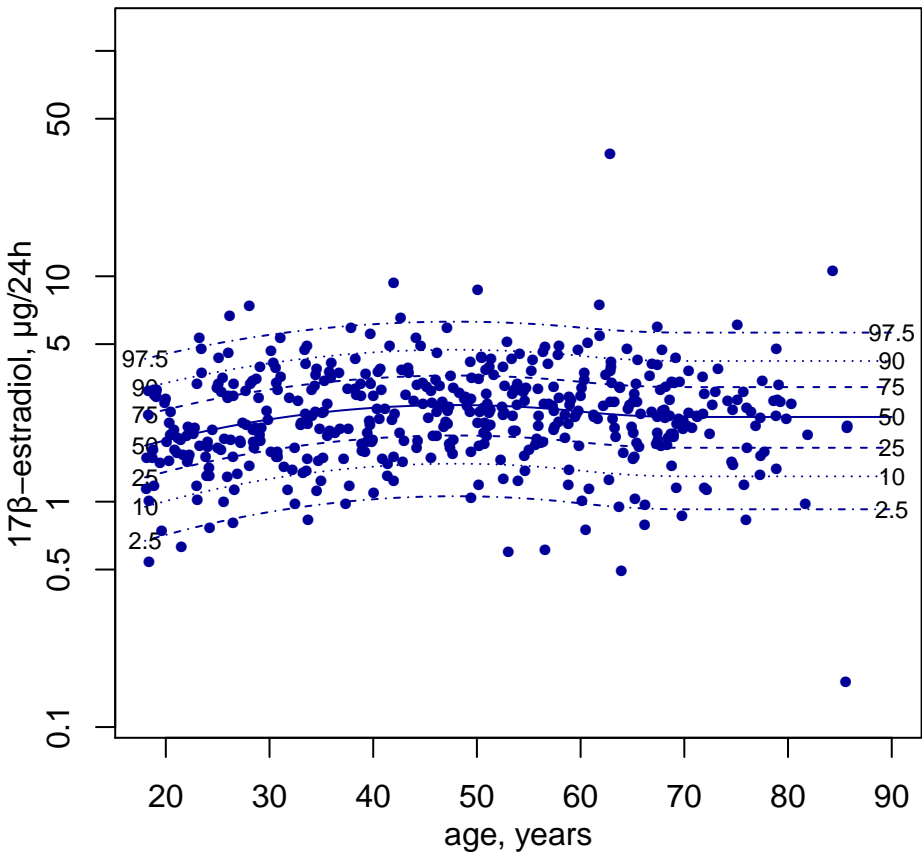


## Women

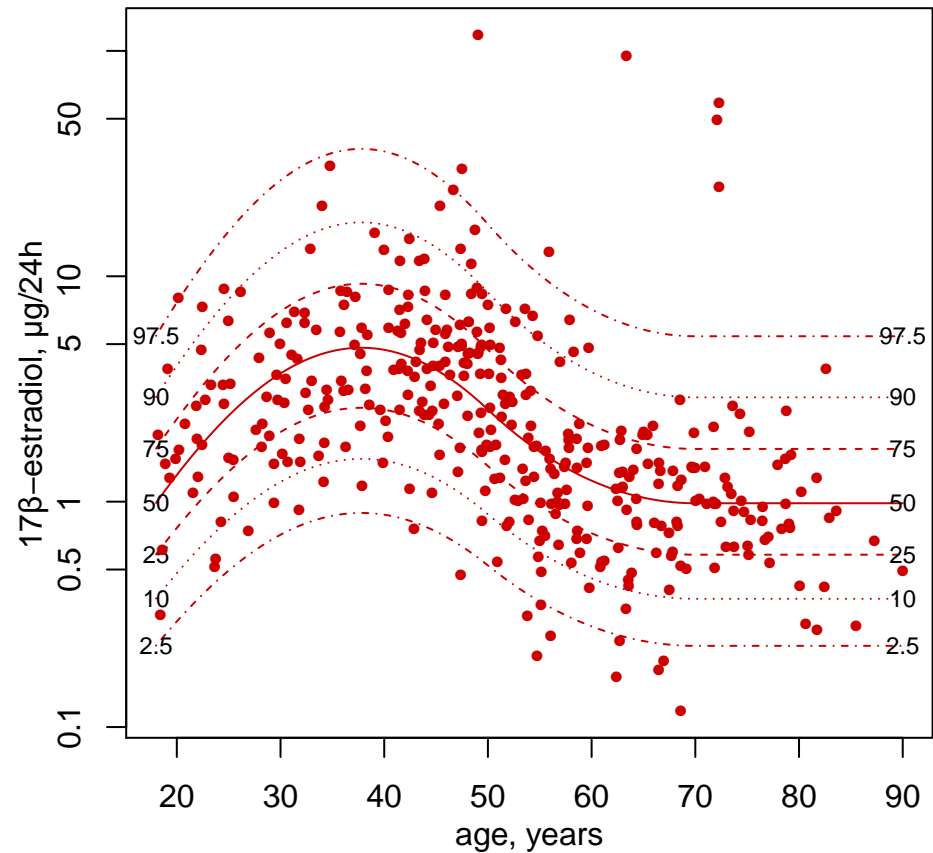




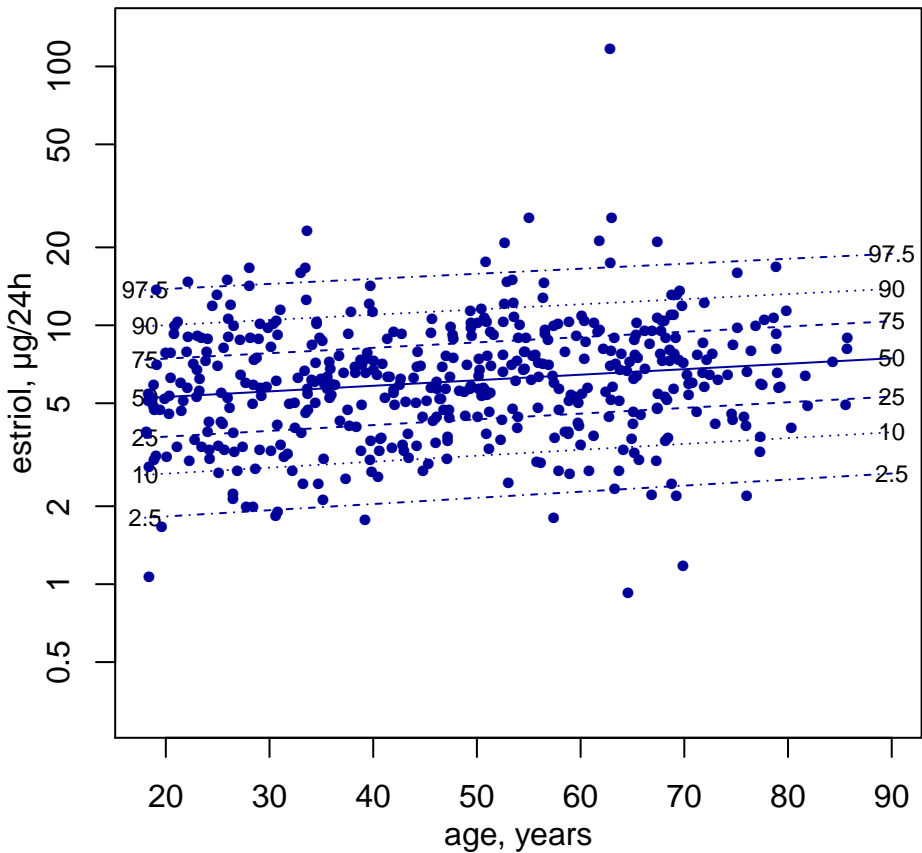
## Men



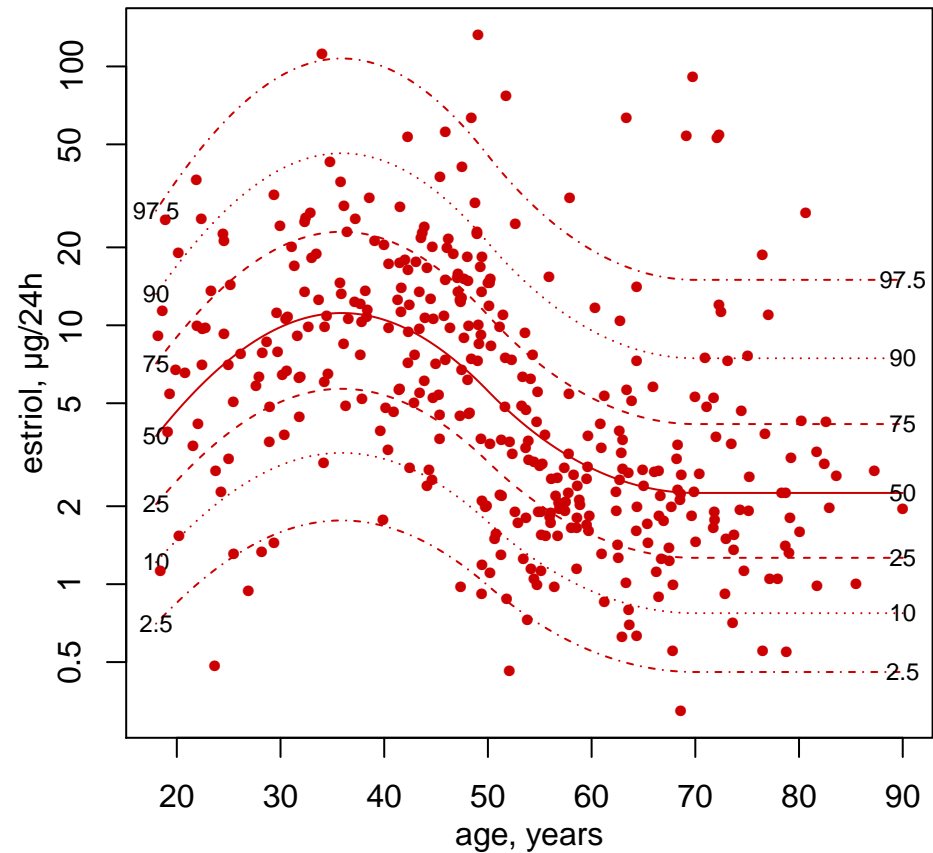
## Women



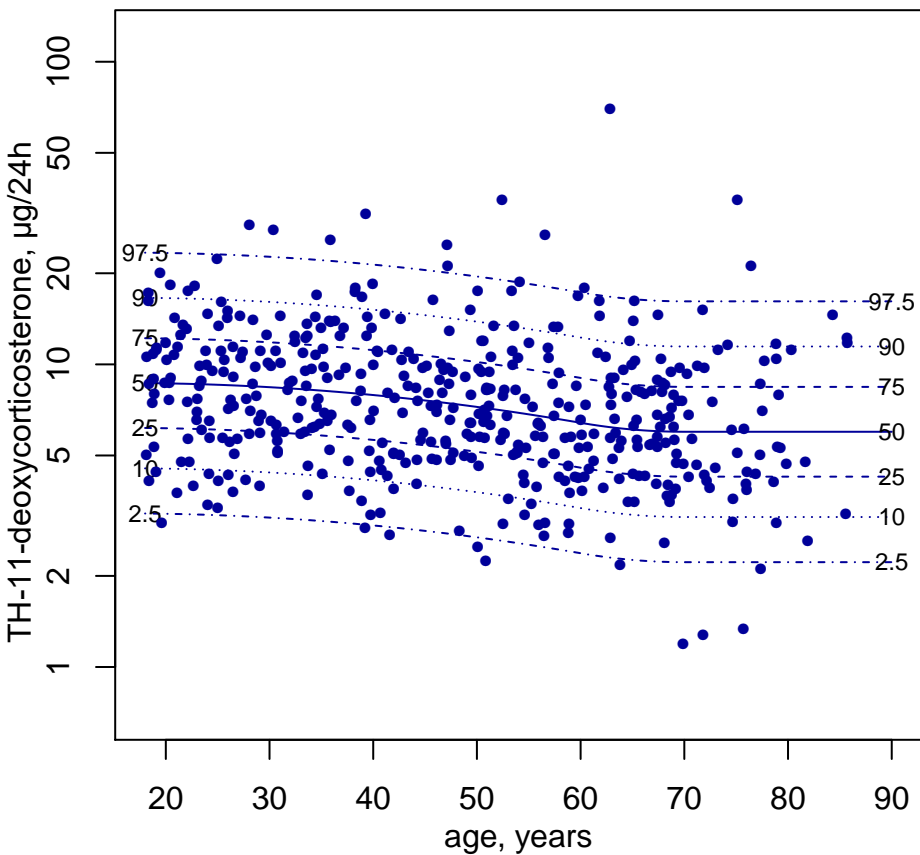
## Men



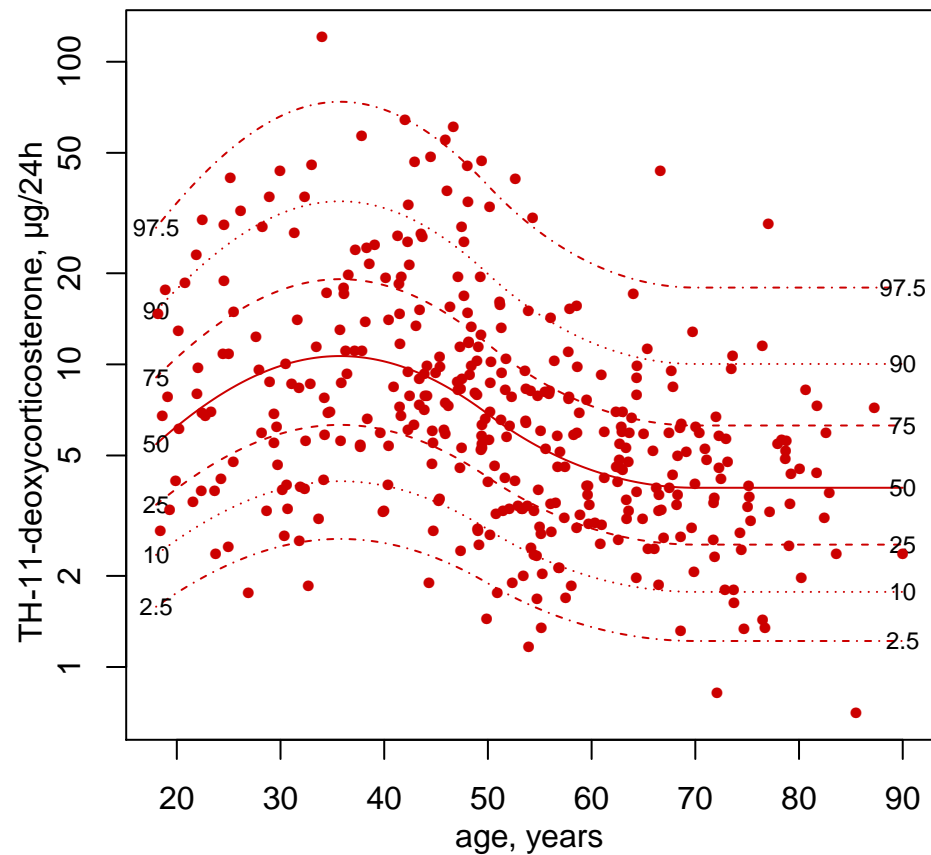
## Women



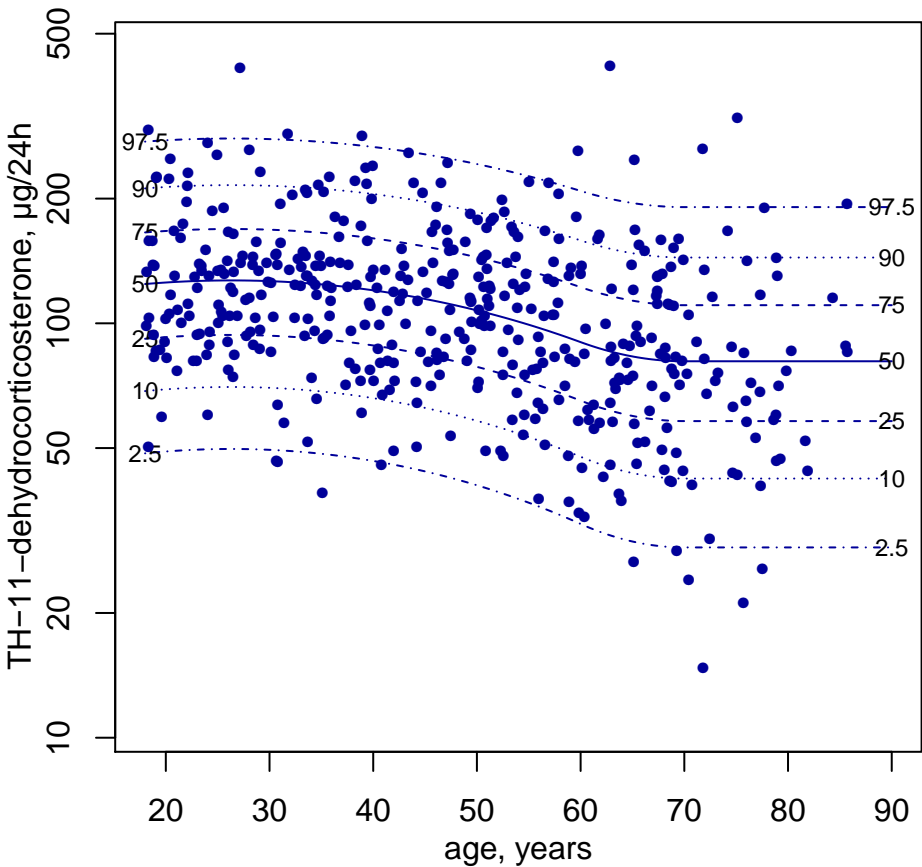
## Men



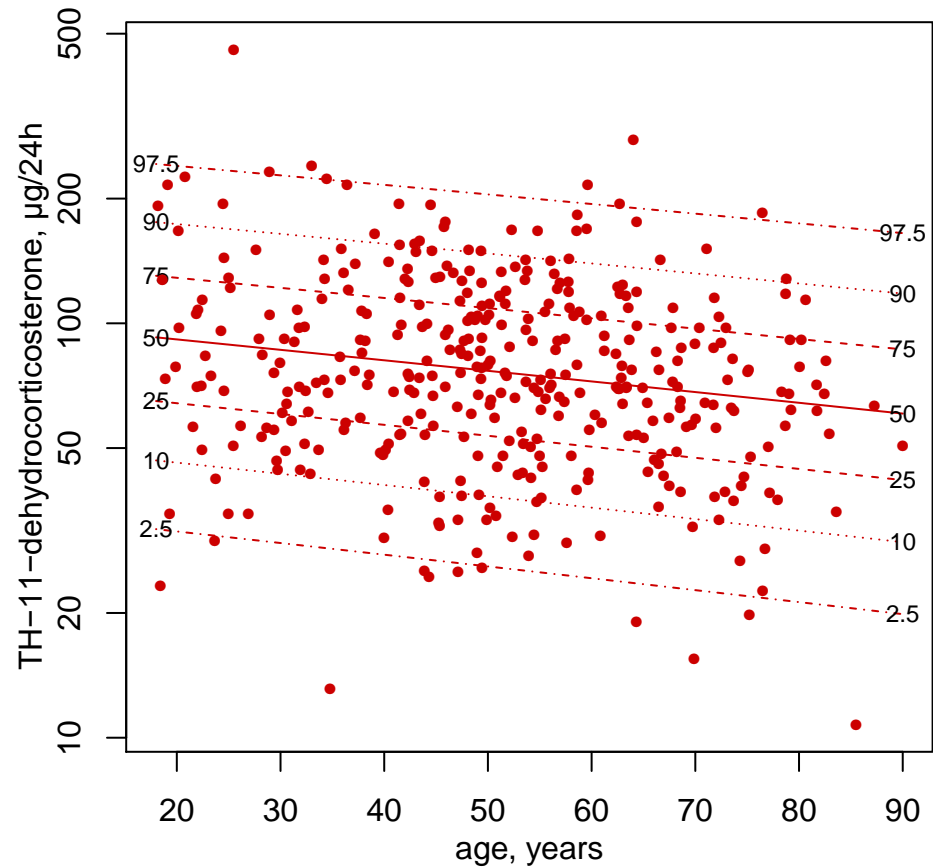
## Women



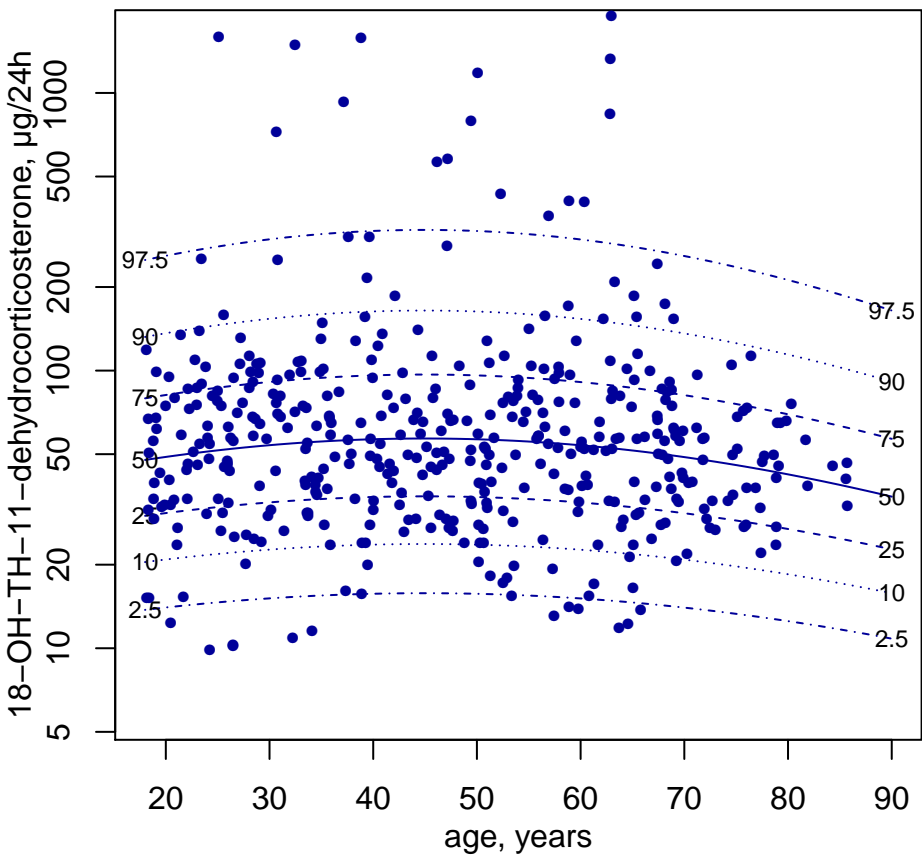
## Men



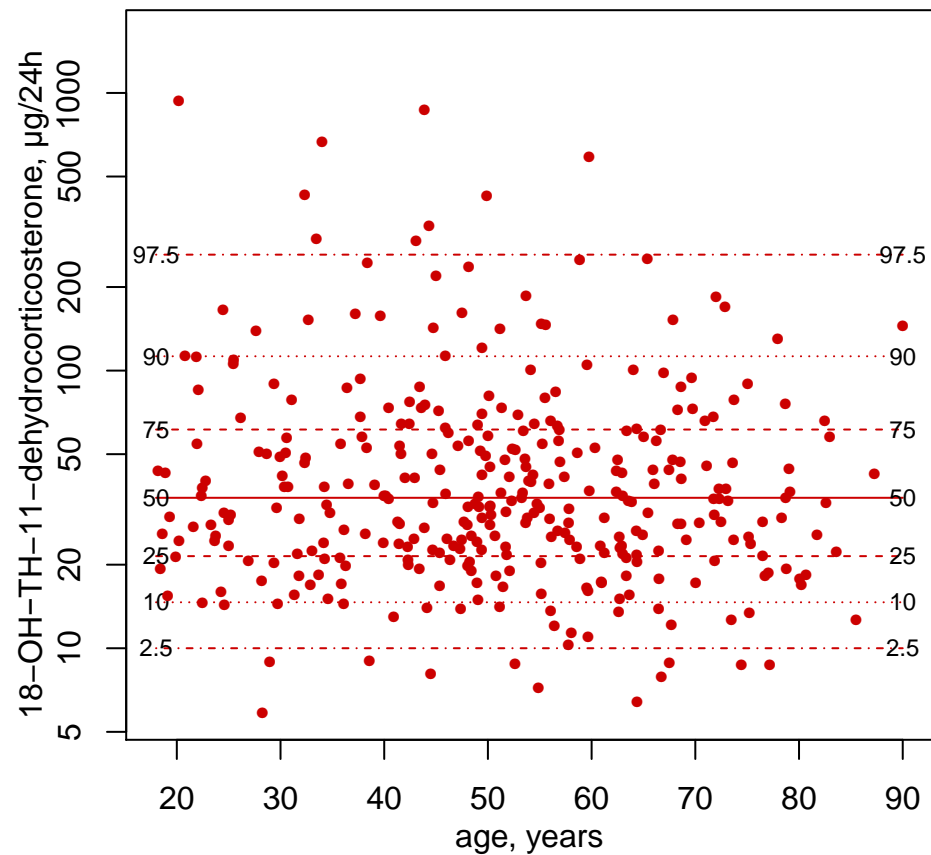
## Women



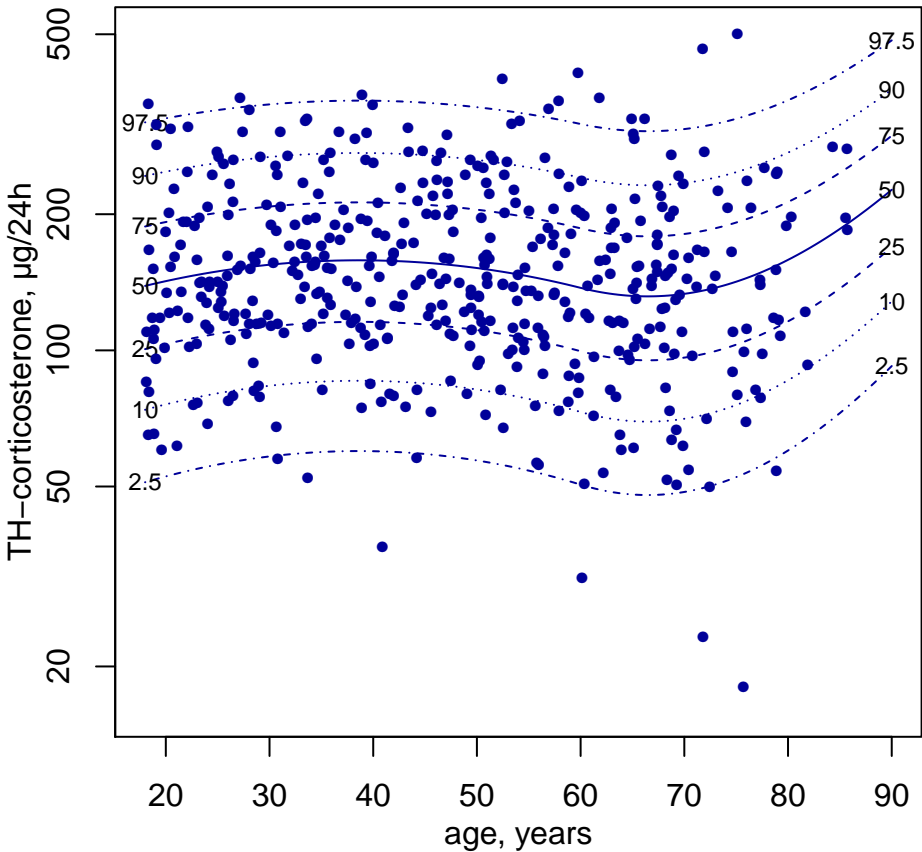
## Men



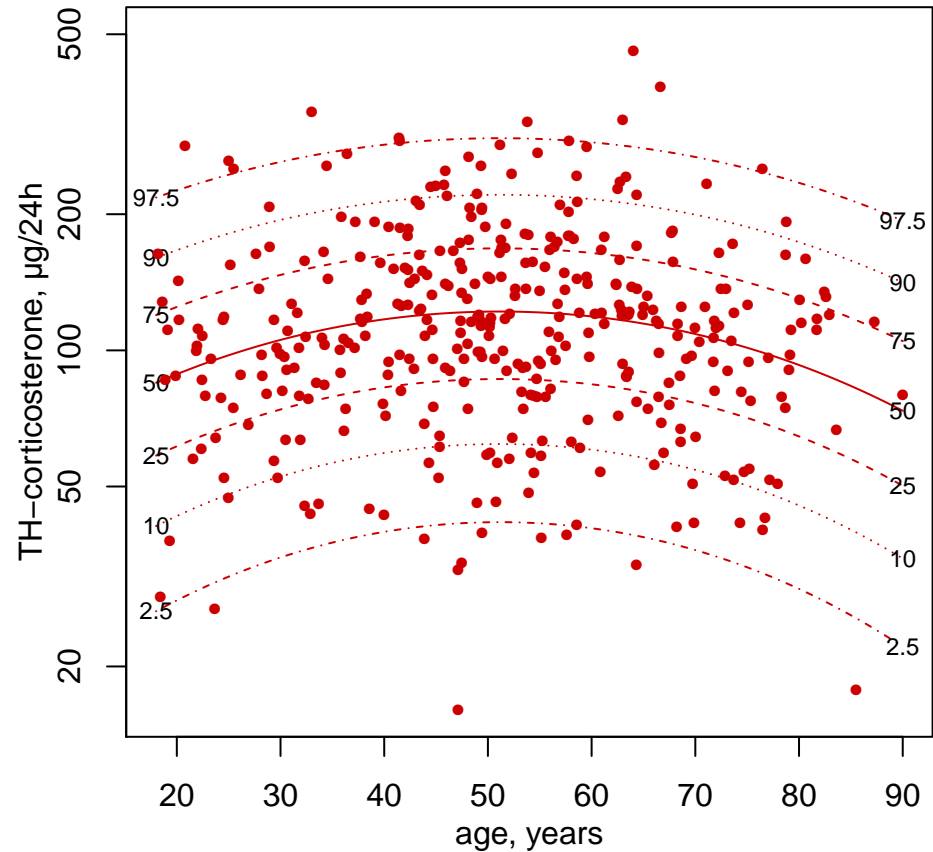
## Women



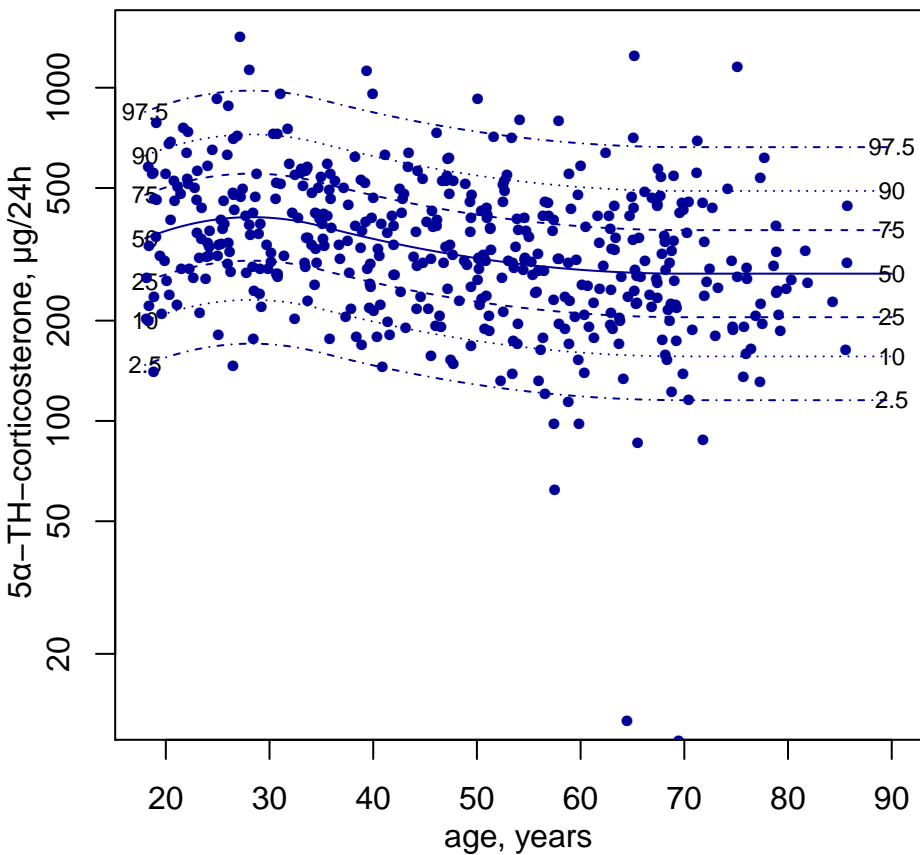
## Men



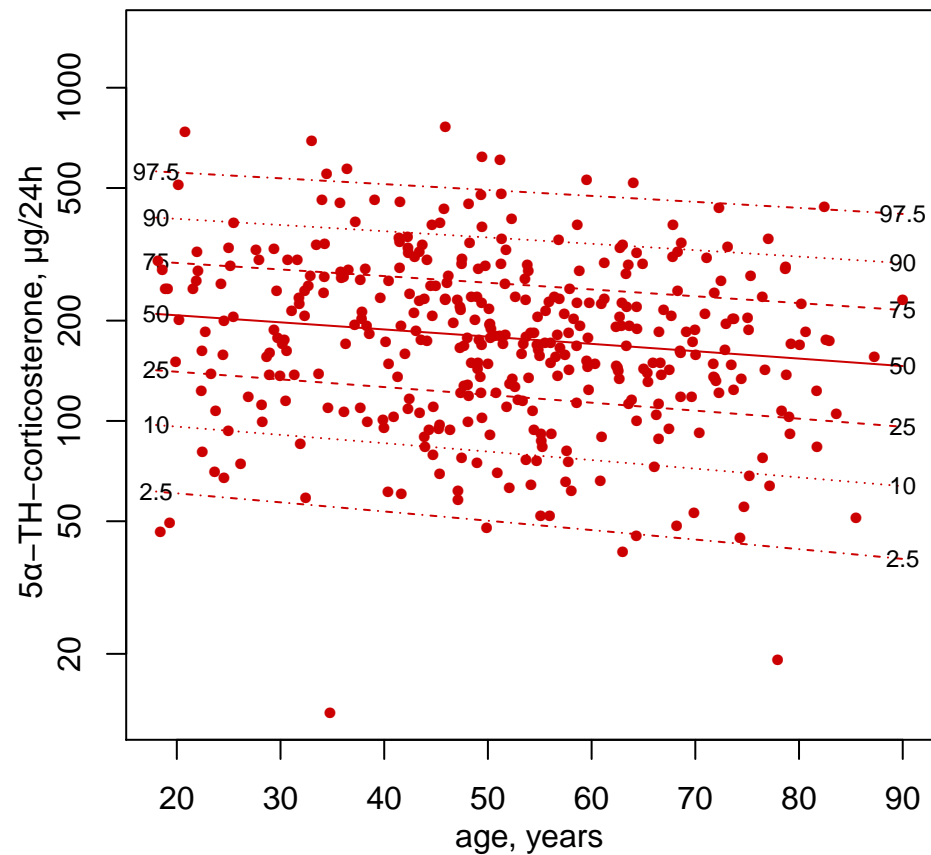
## Women



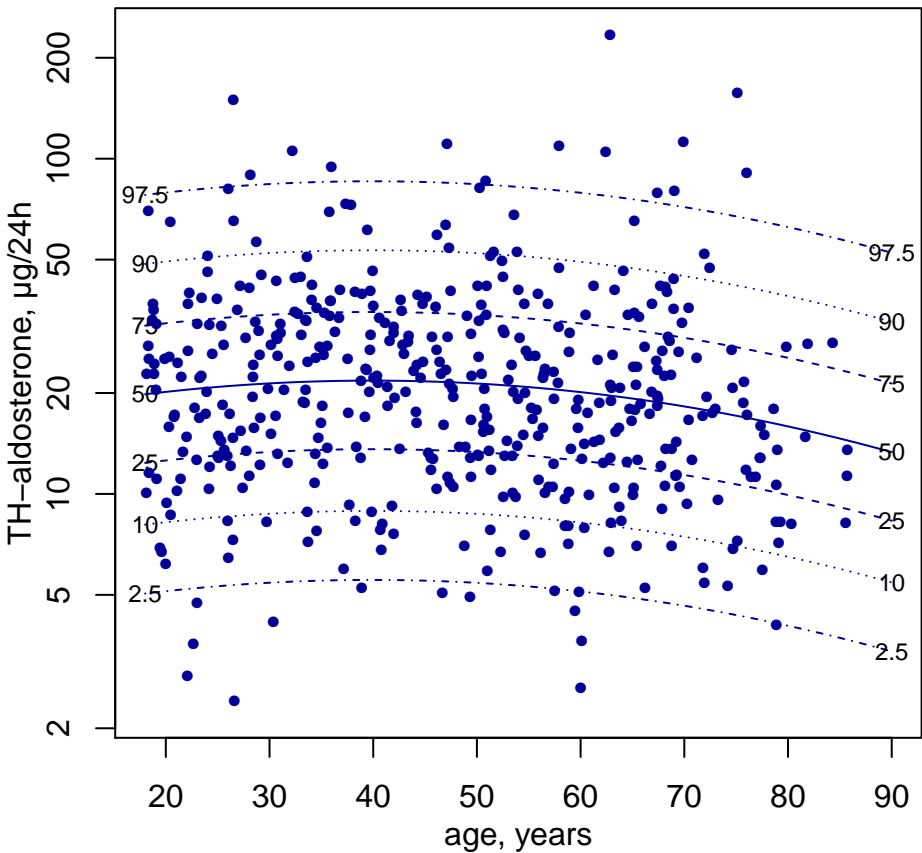
## Men



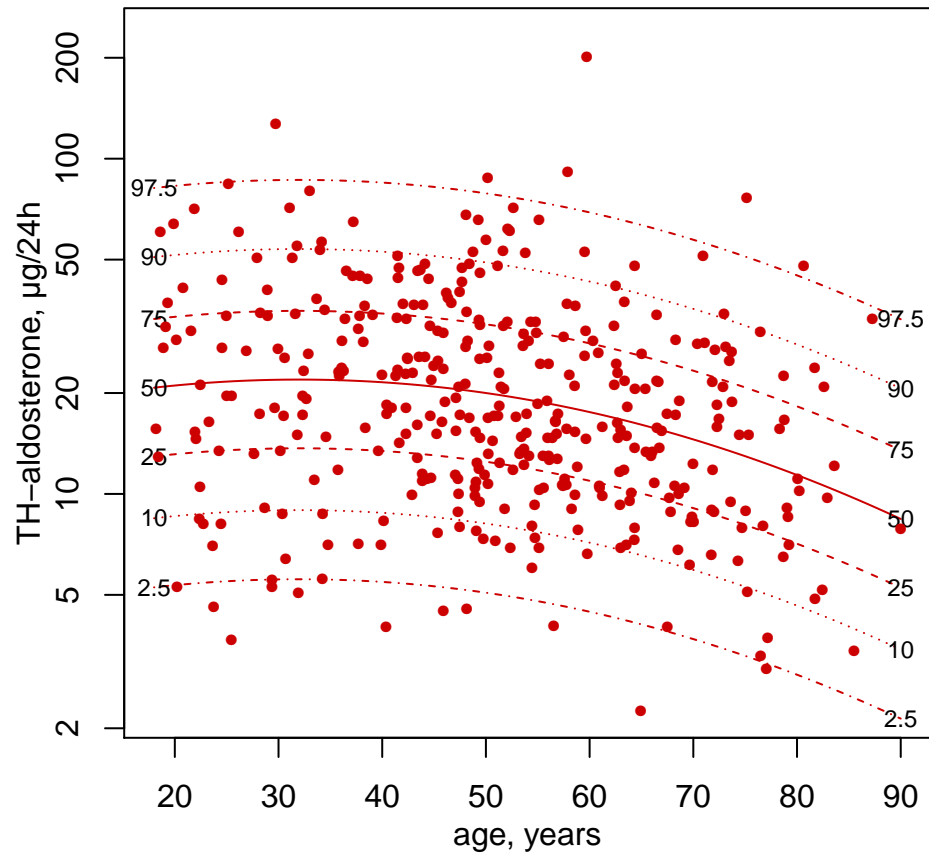
## Women



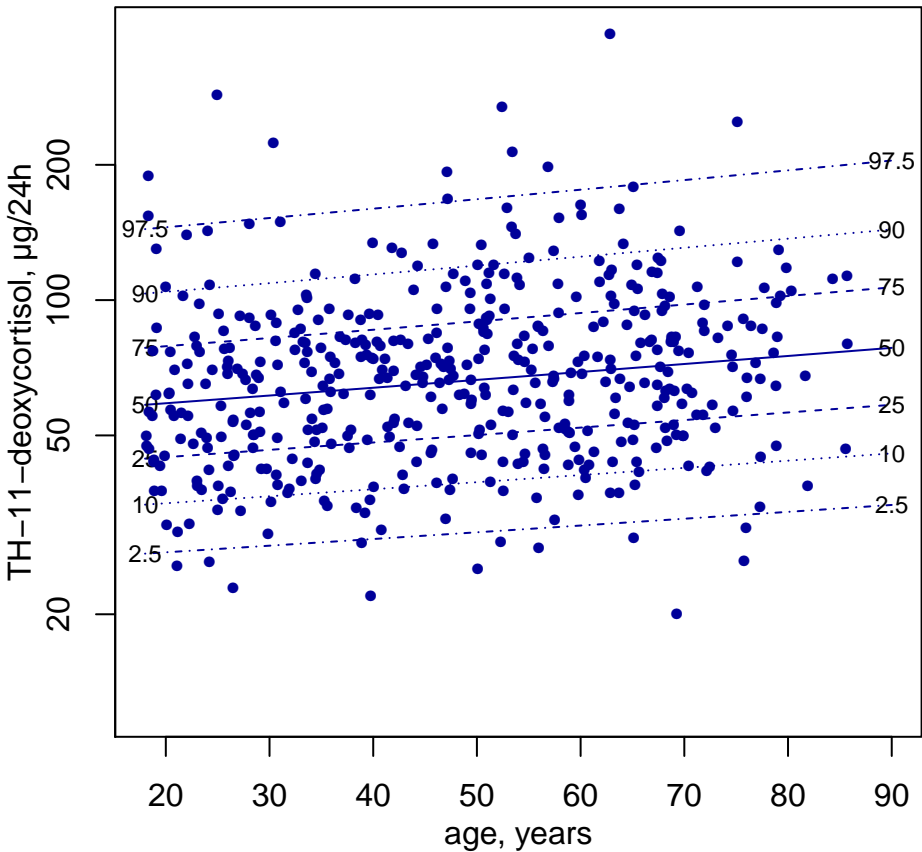
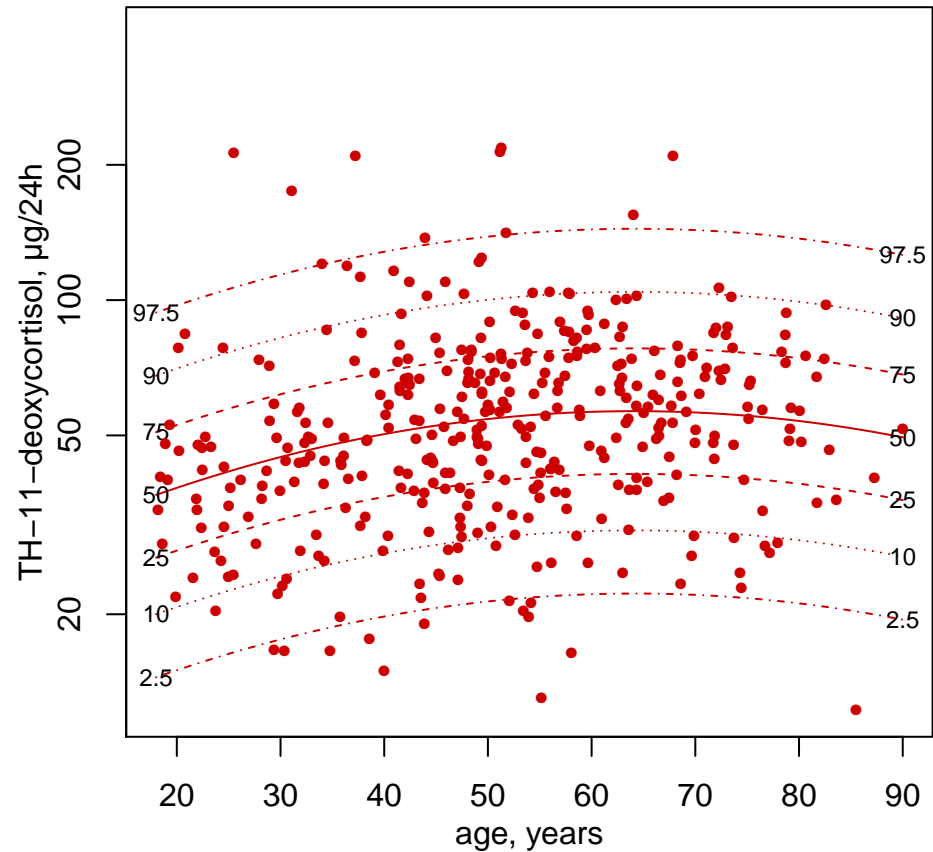
### Men



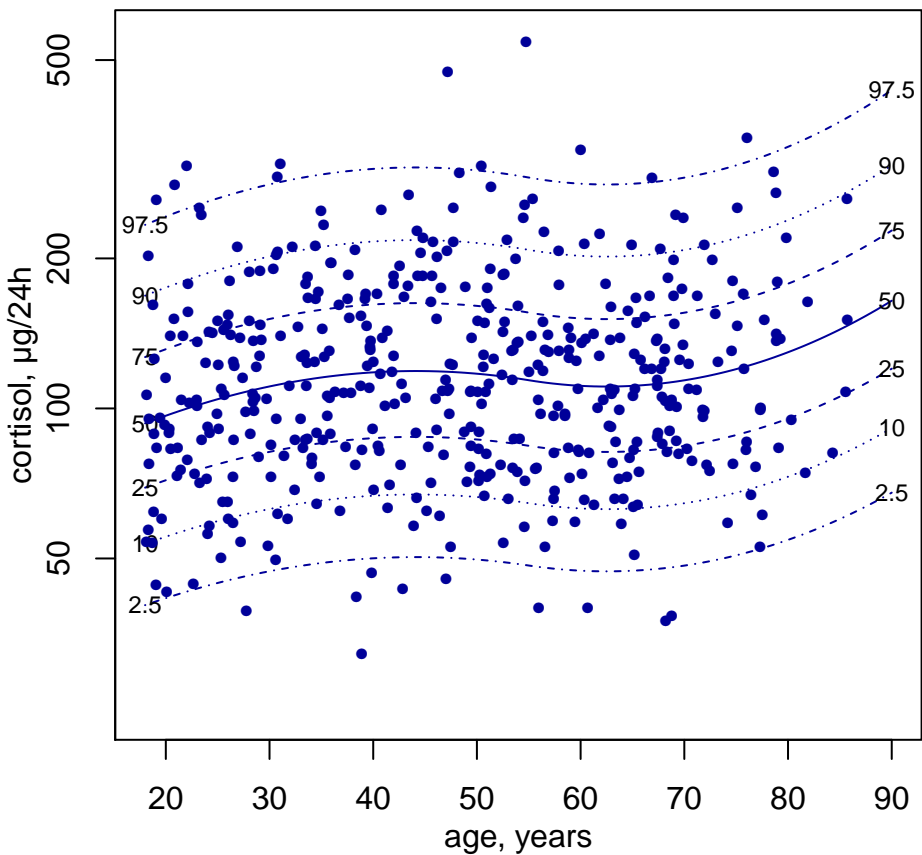
### Women



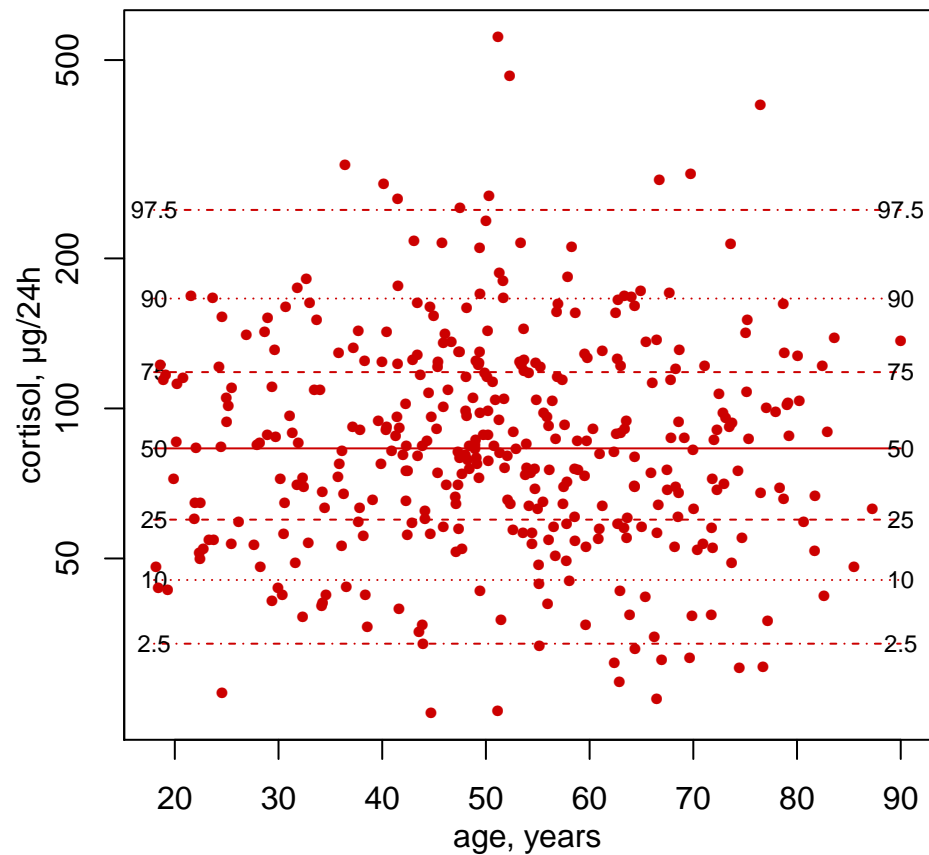


**Men****Women**

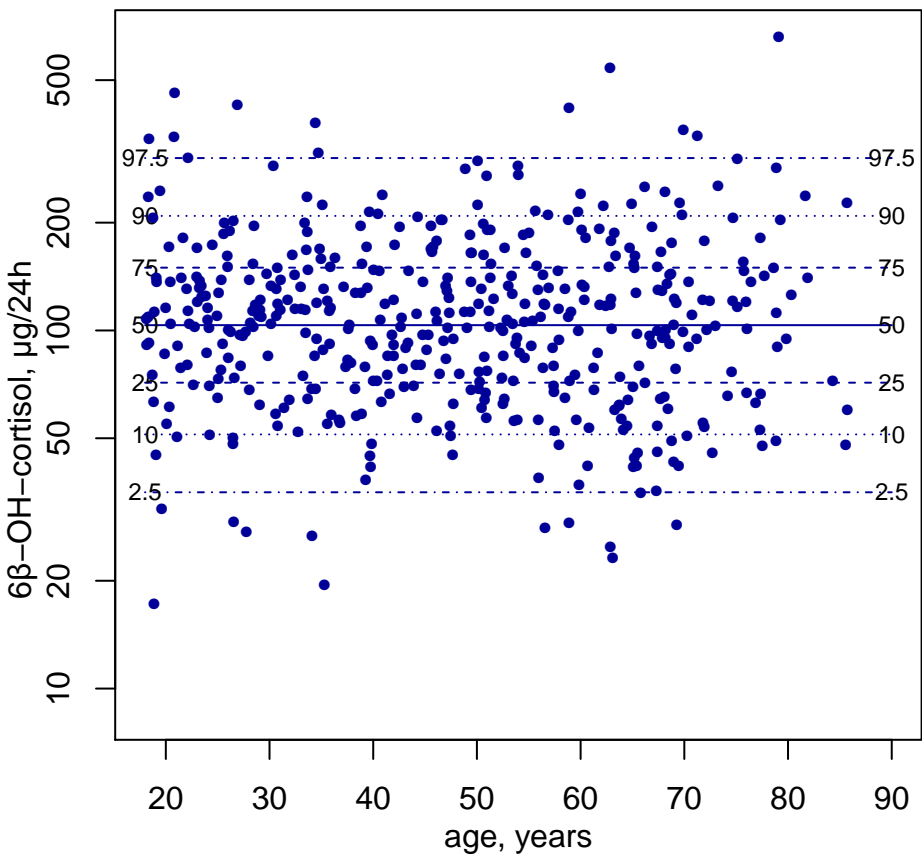
## Men



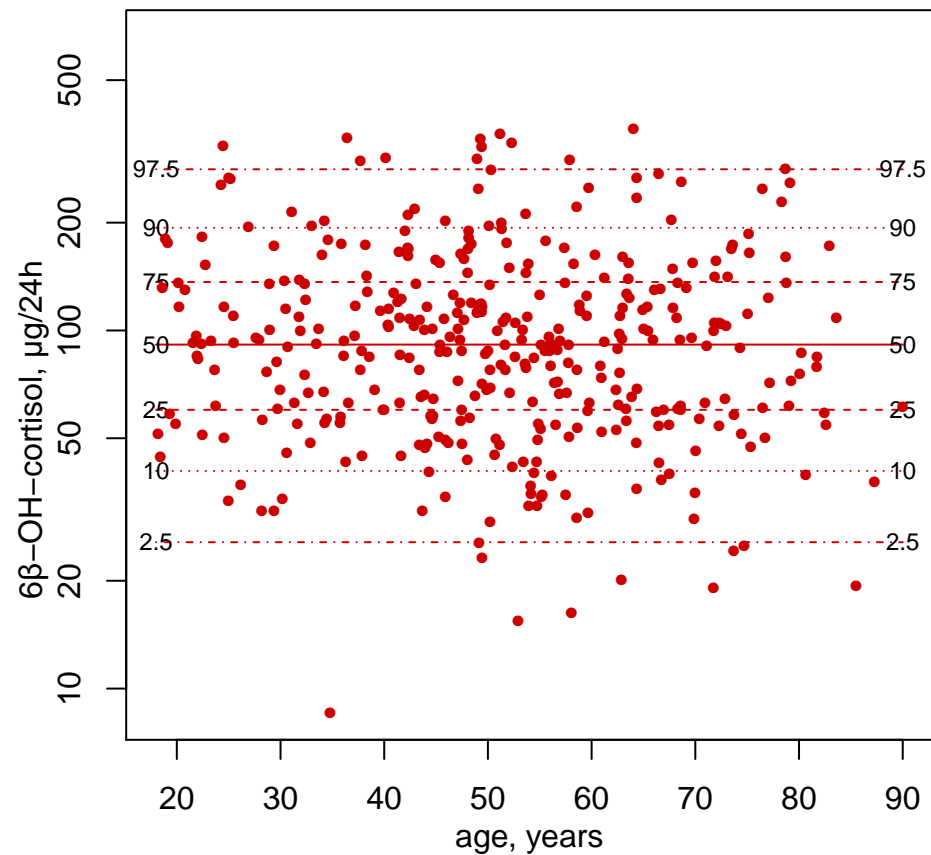
## Women



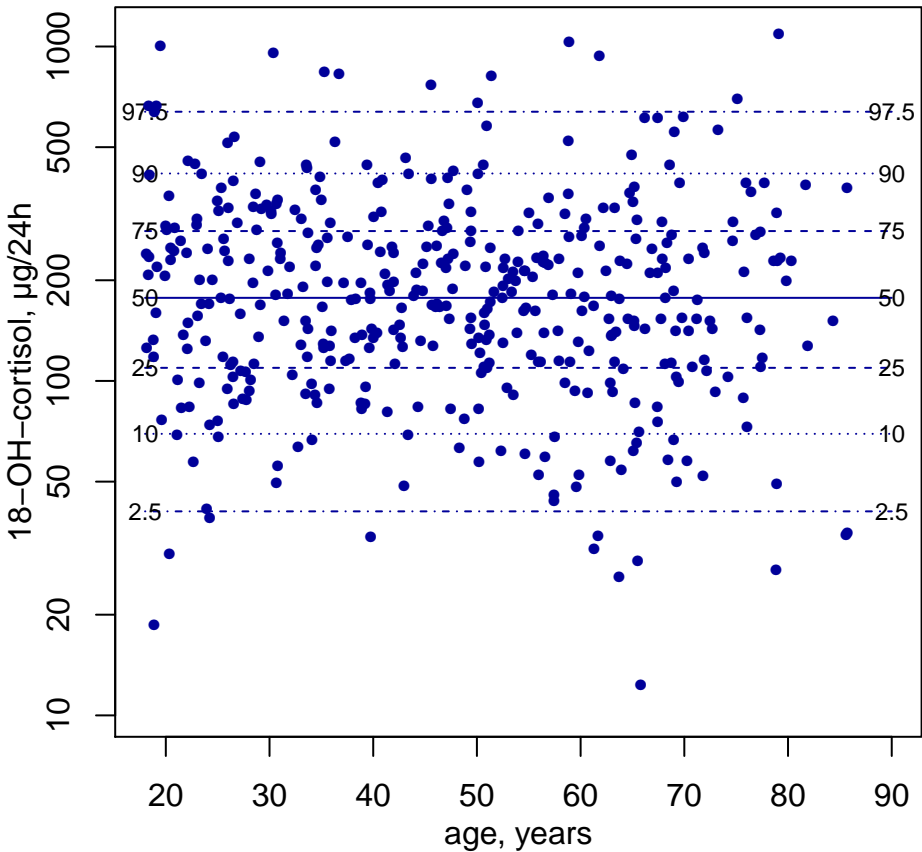
## Men



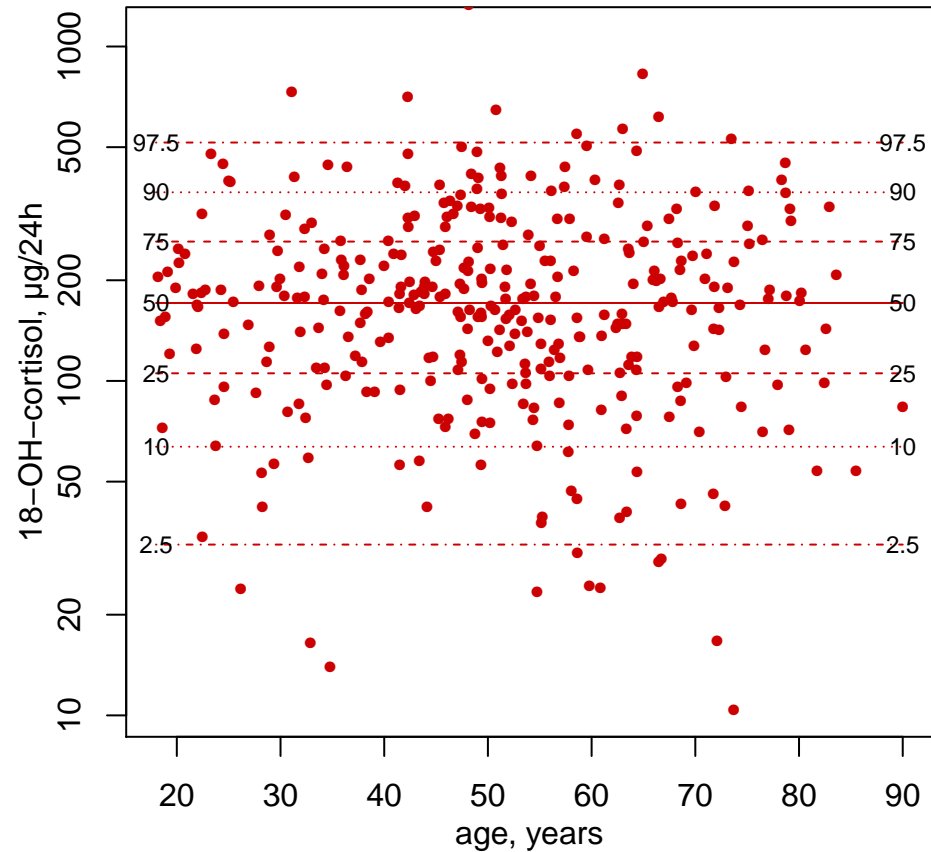
## Women



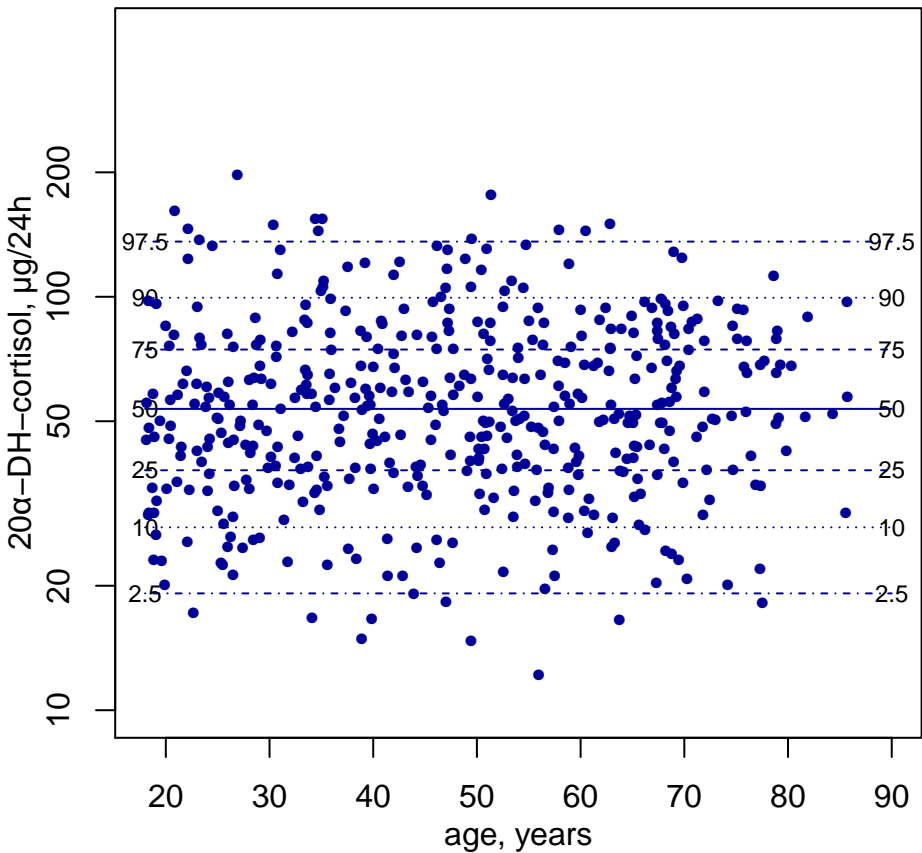
## Men



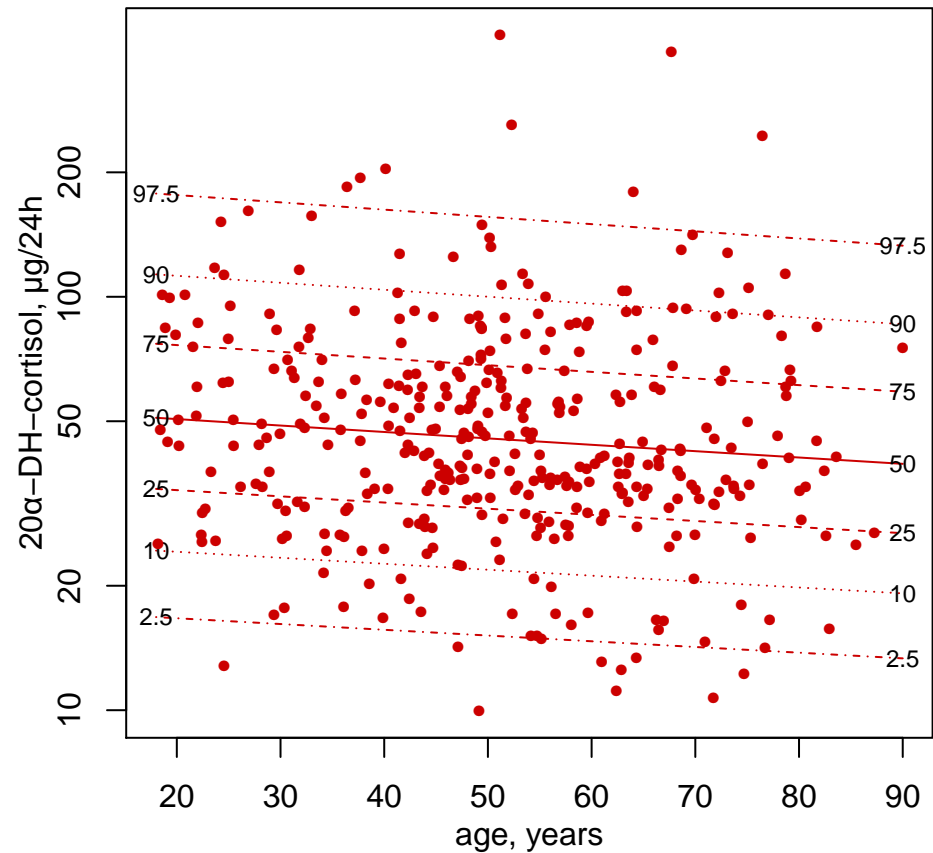
## Women



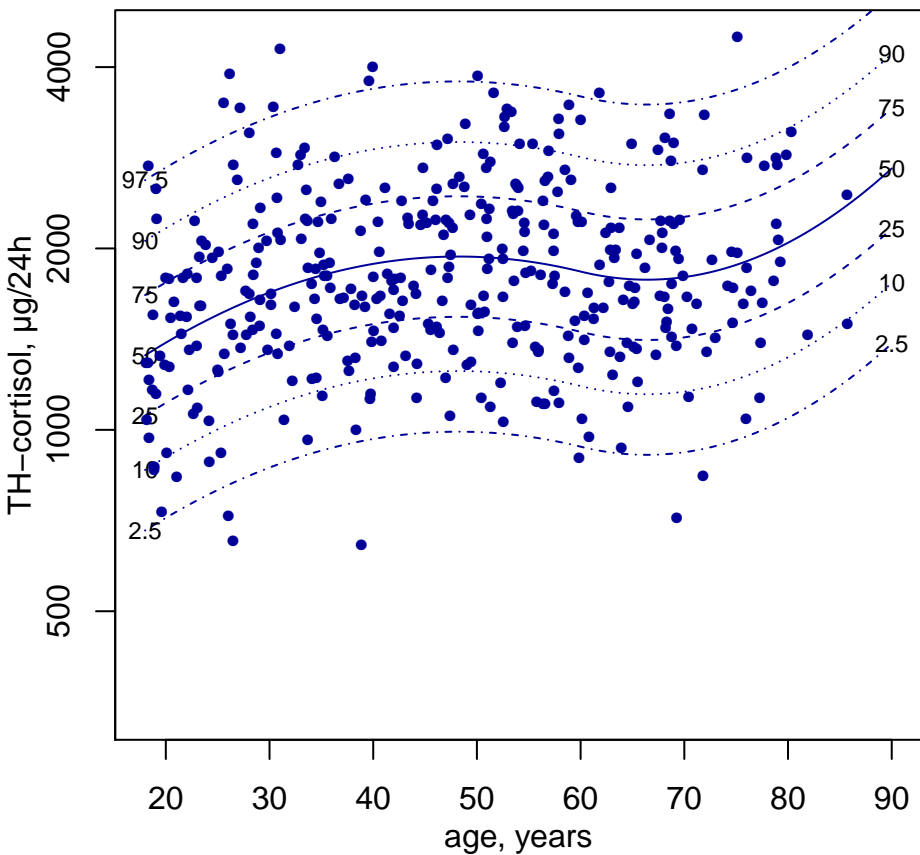
## Men



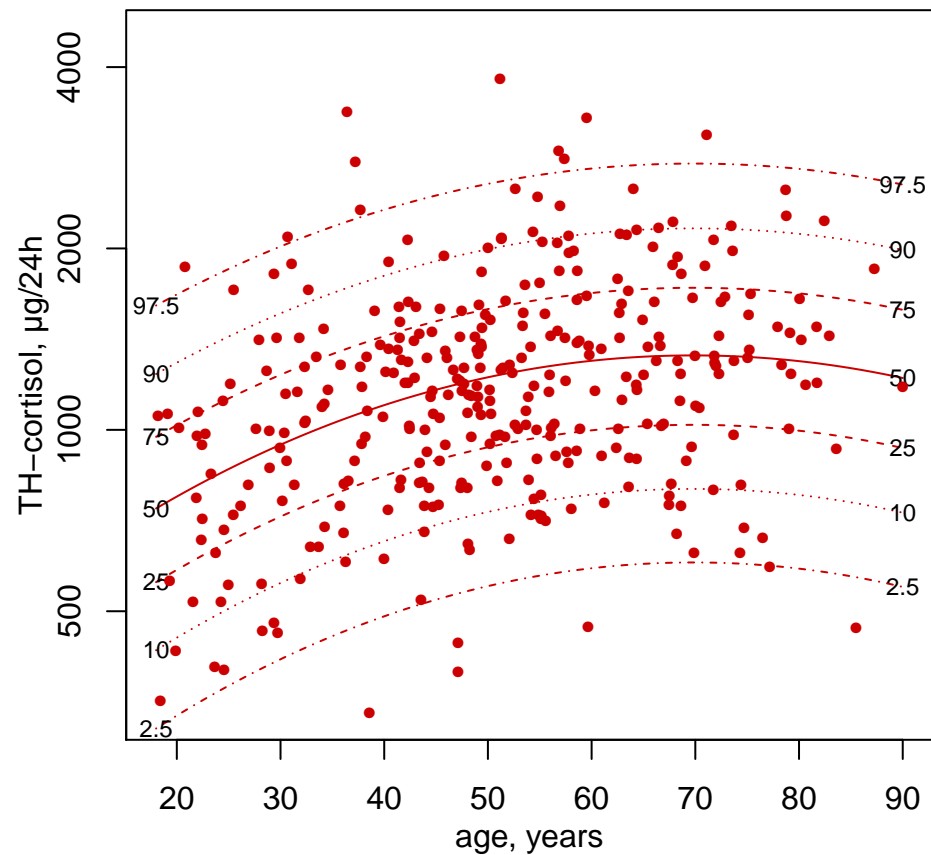
## Women



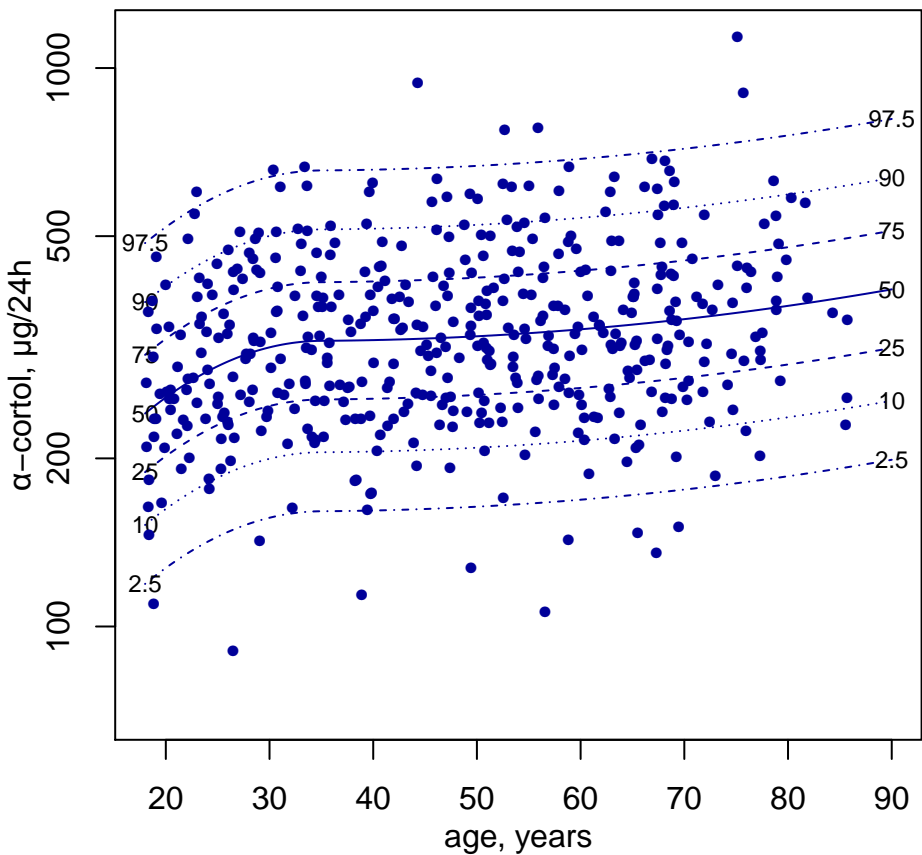
## Men



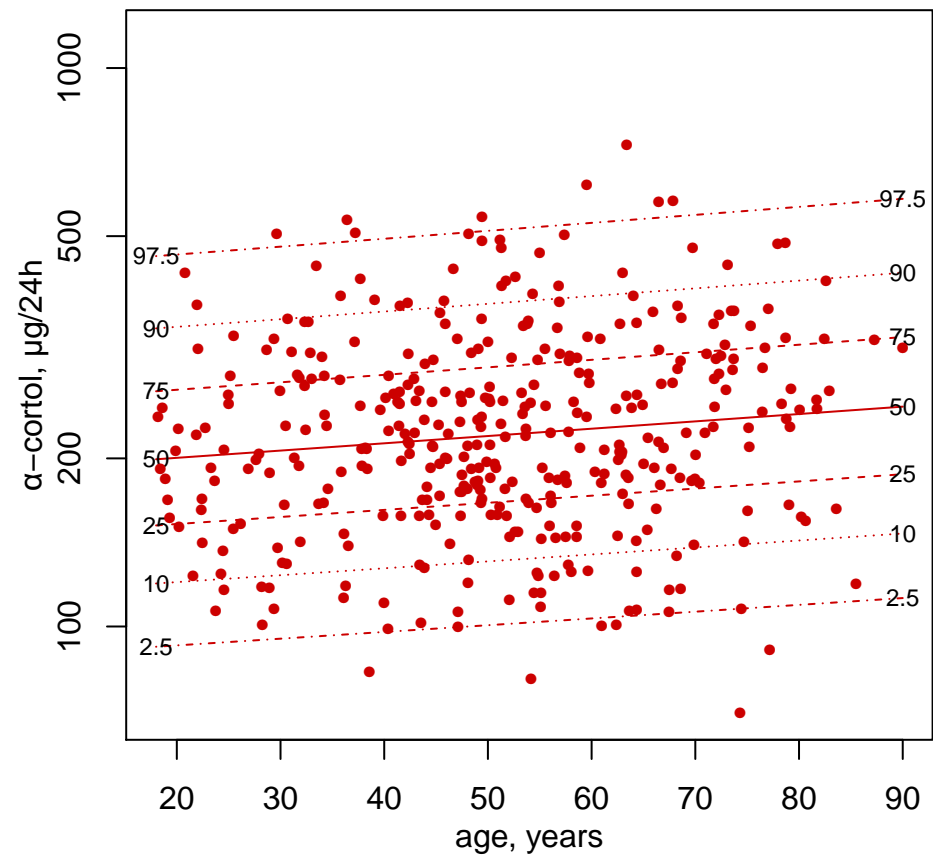
## Women



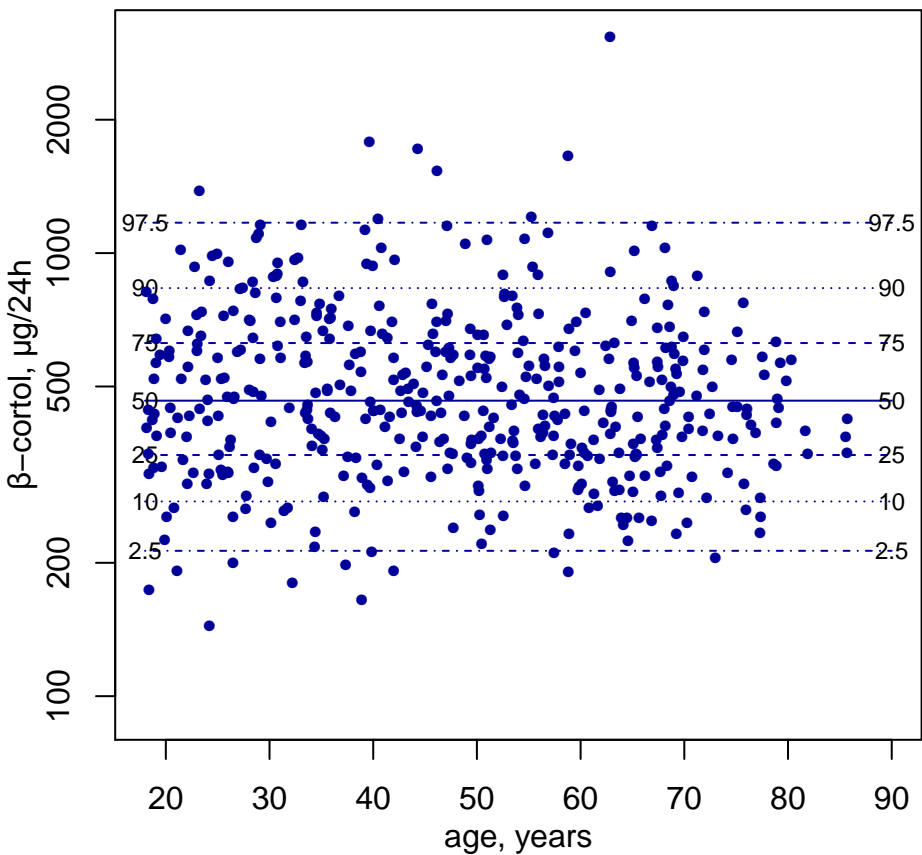
## Men



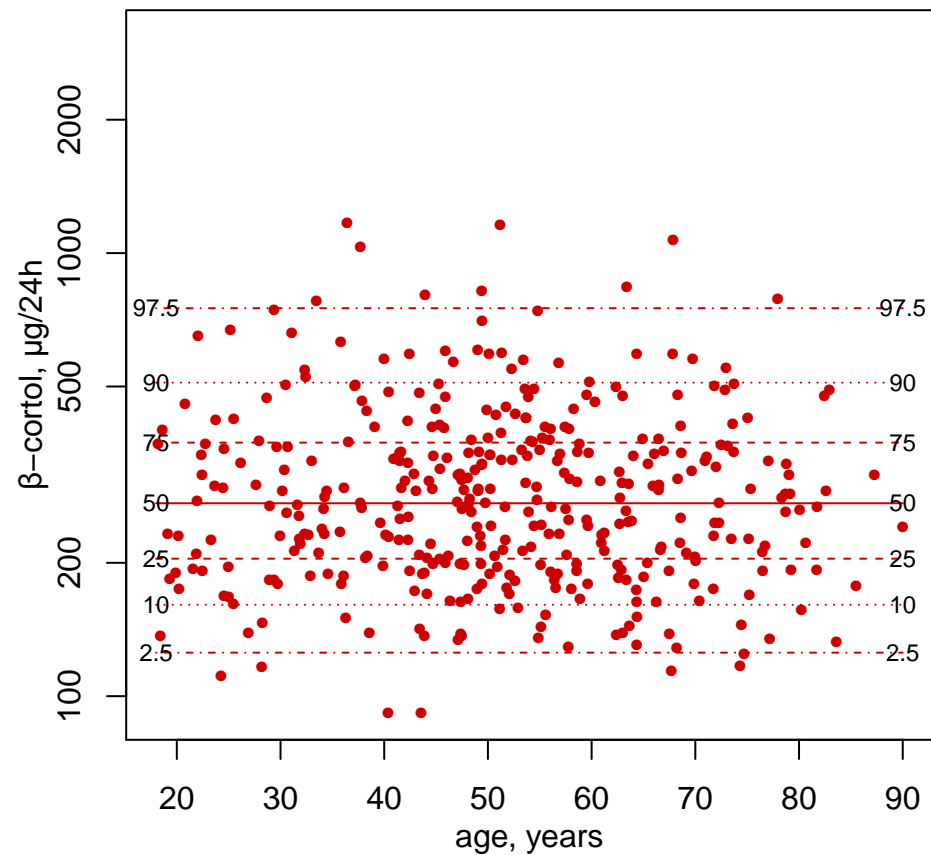
## Women



## Men

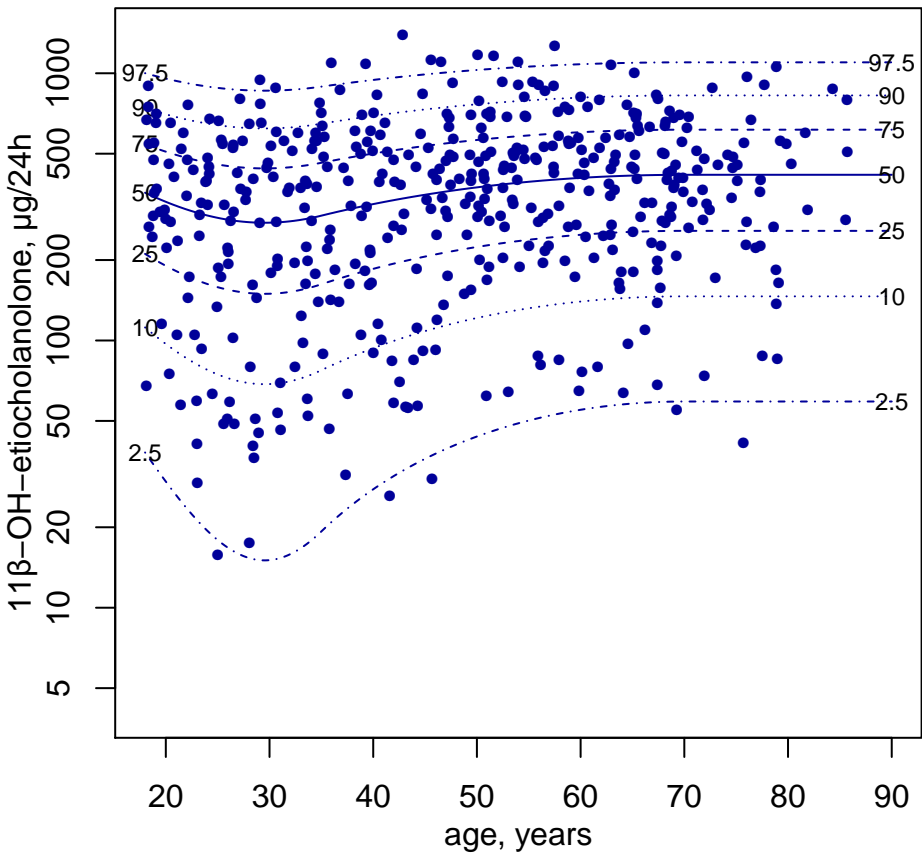


## Women

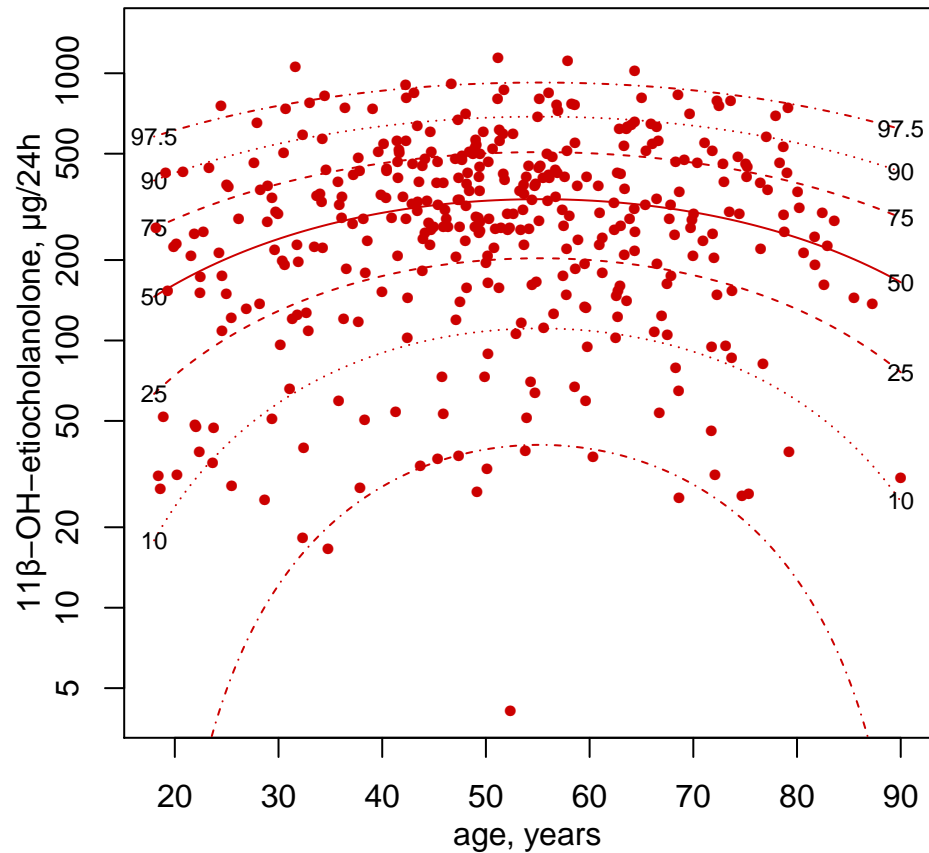




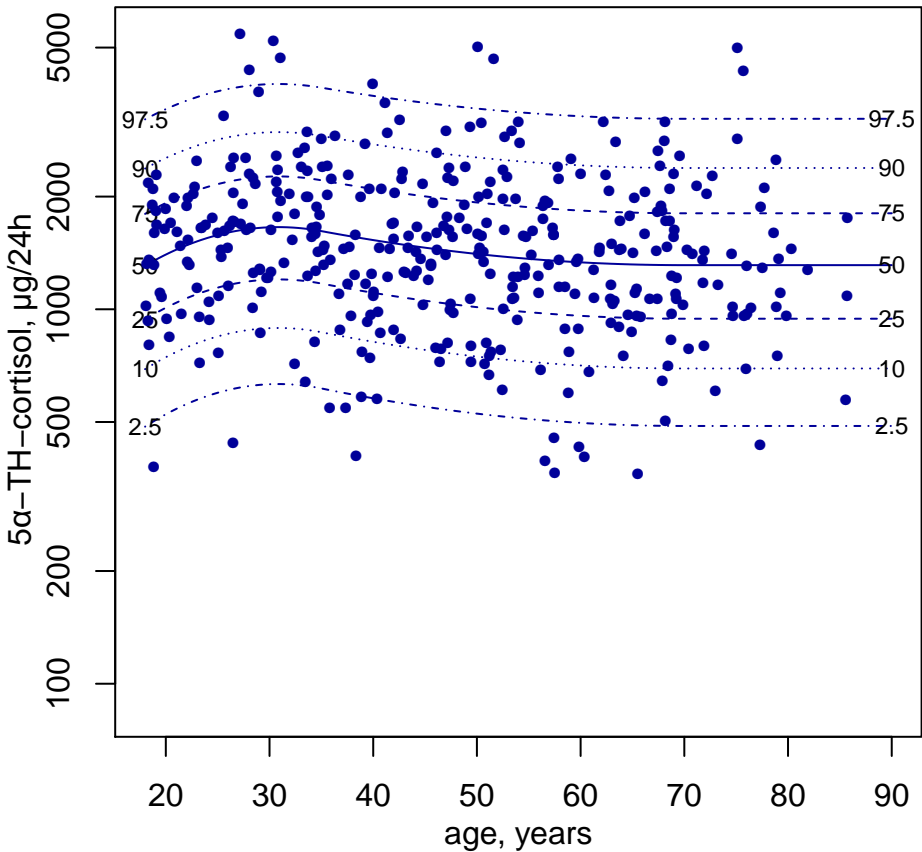
## Men



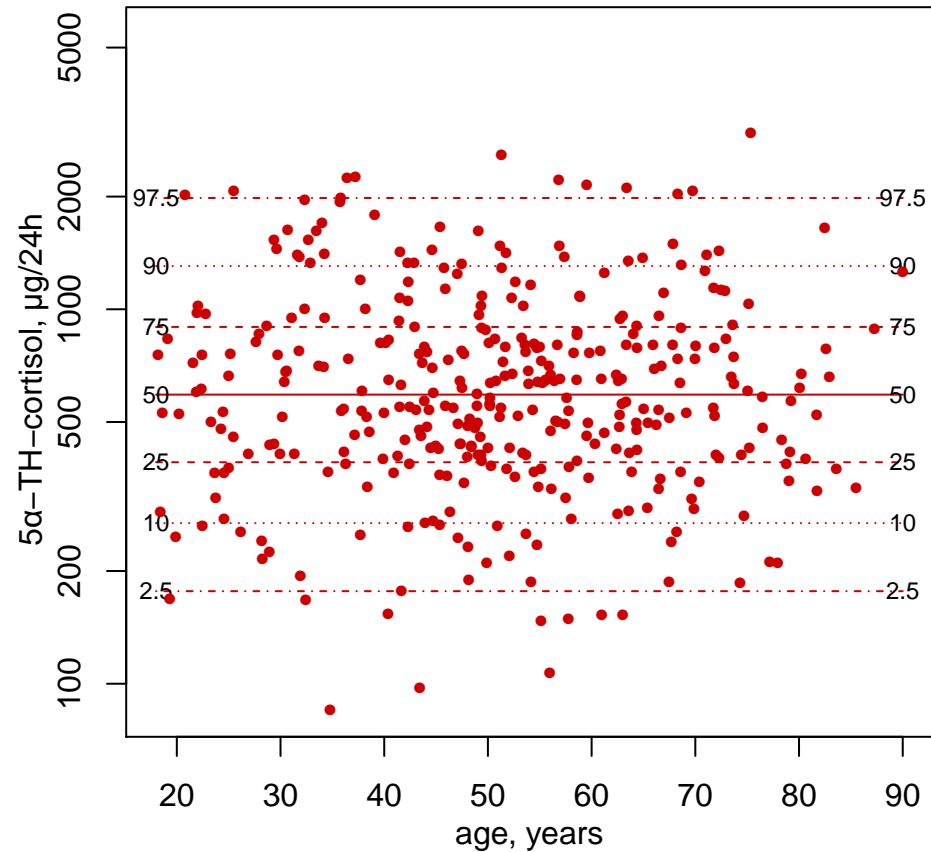
## Women



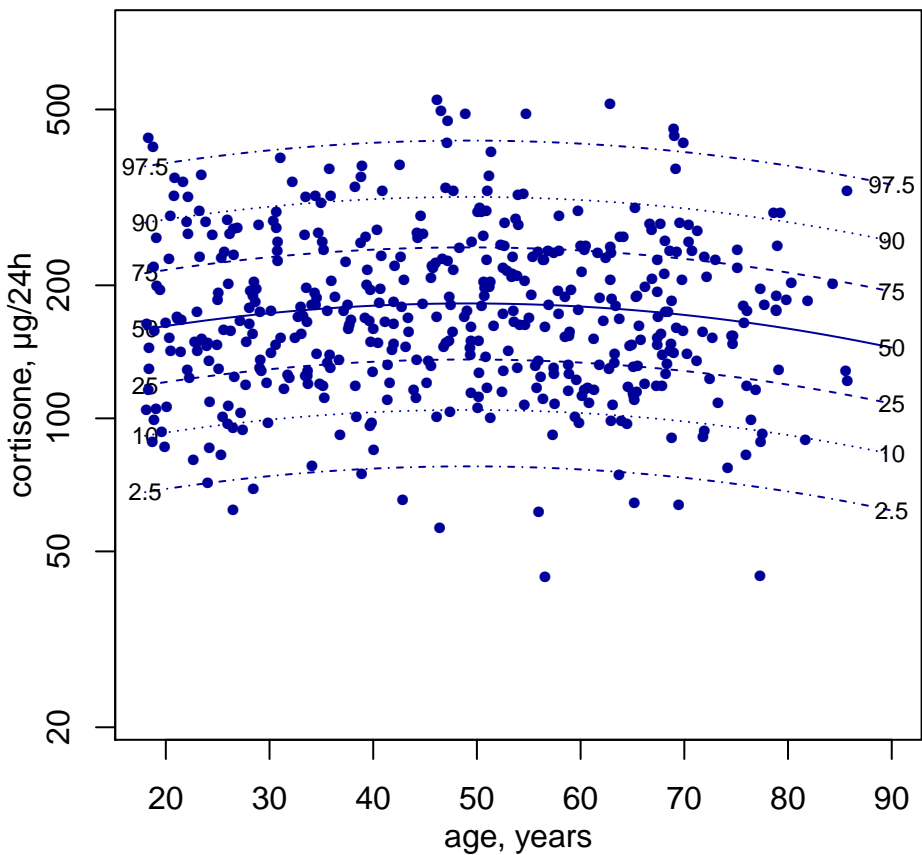
## Men



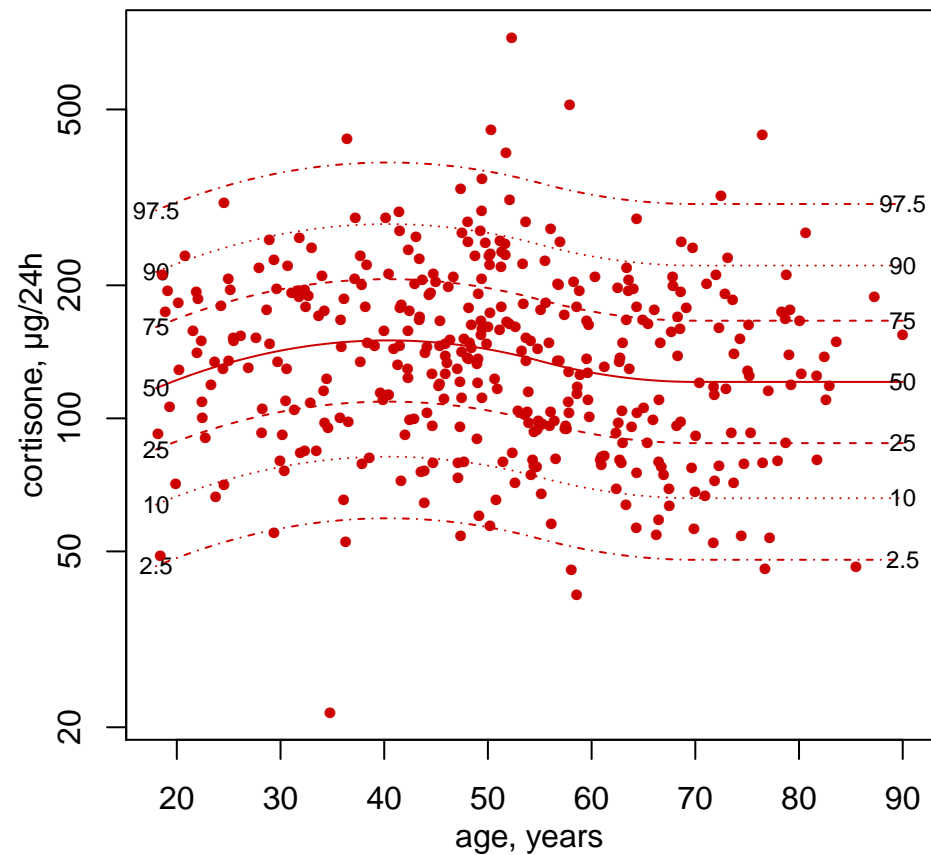
## Women

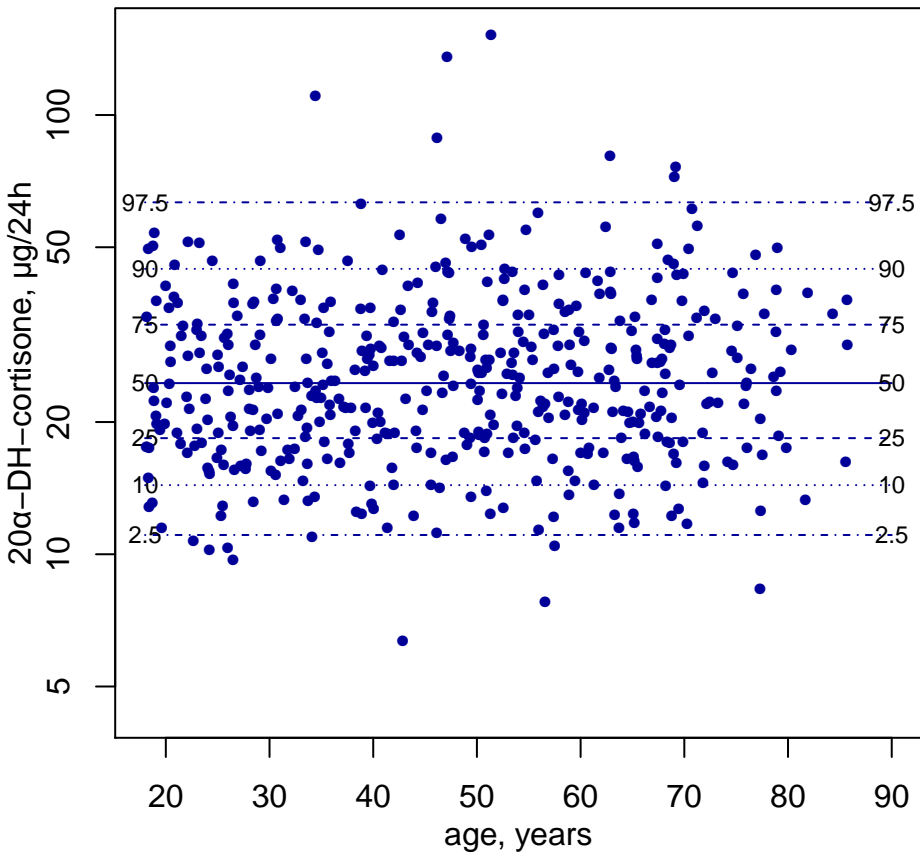
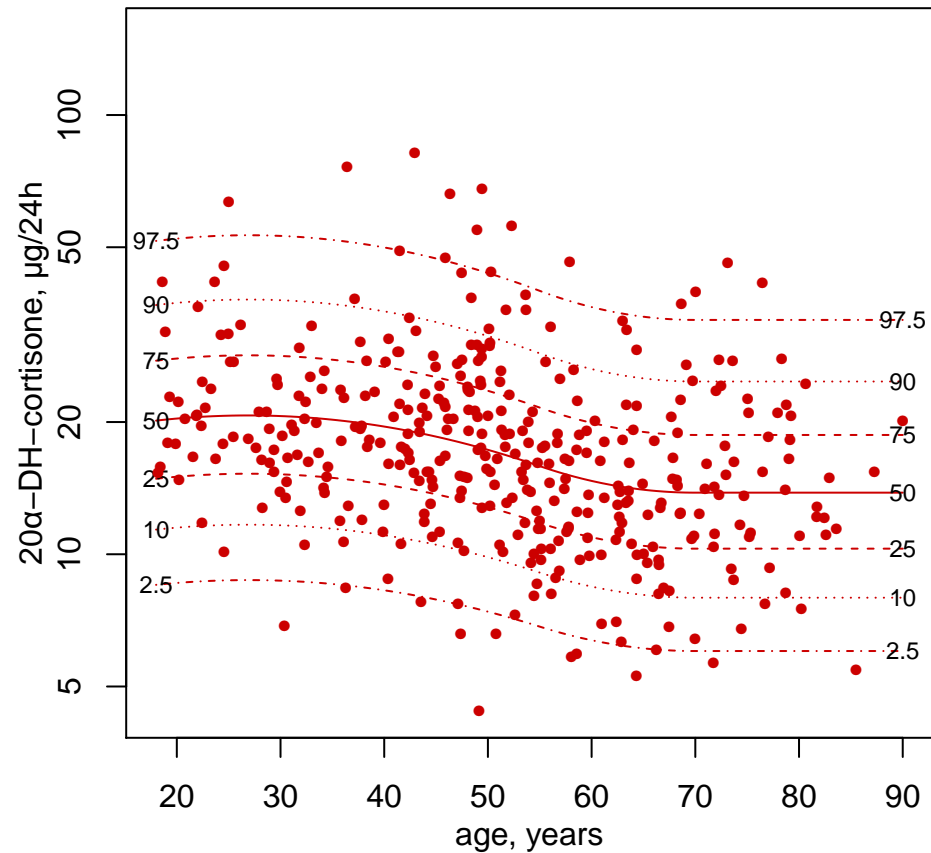


## Men

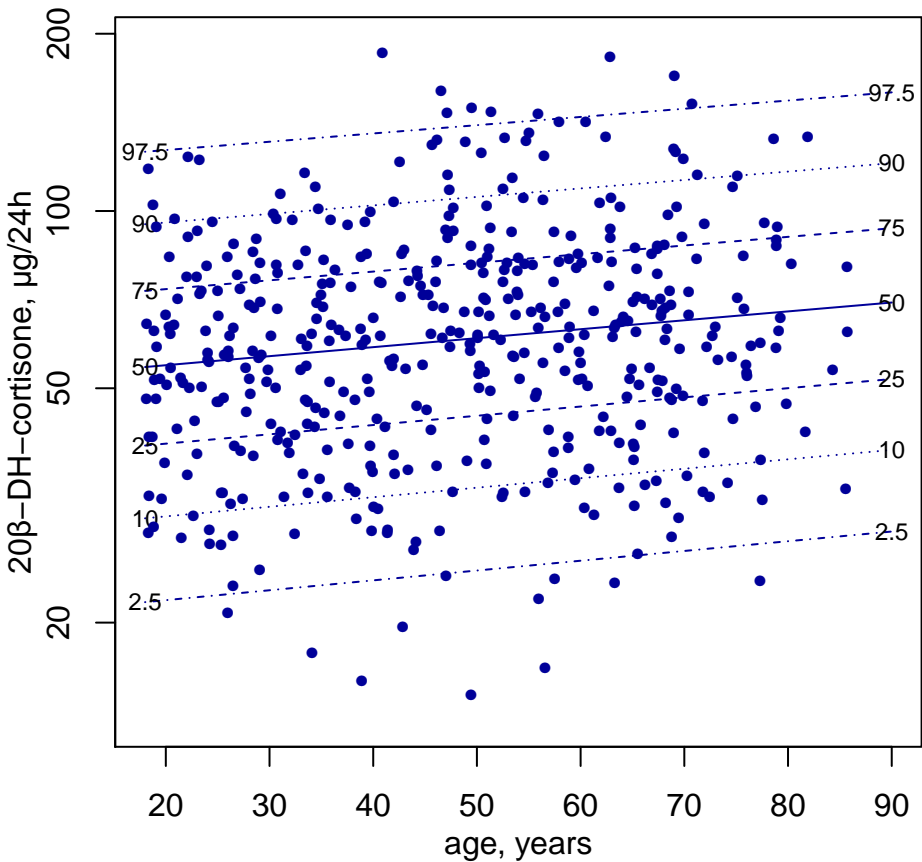


## Women

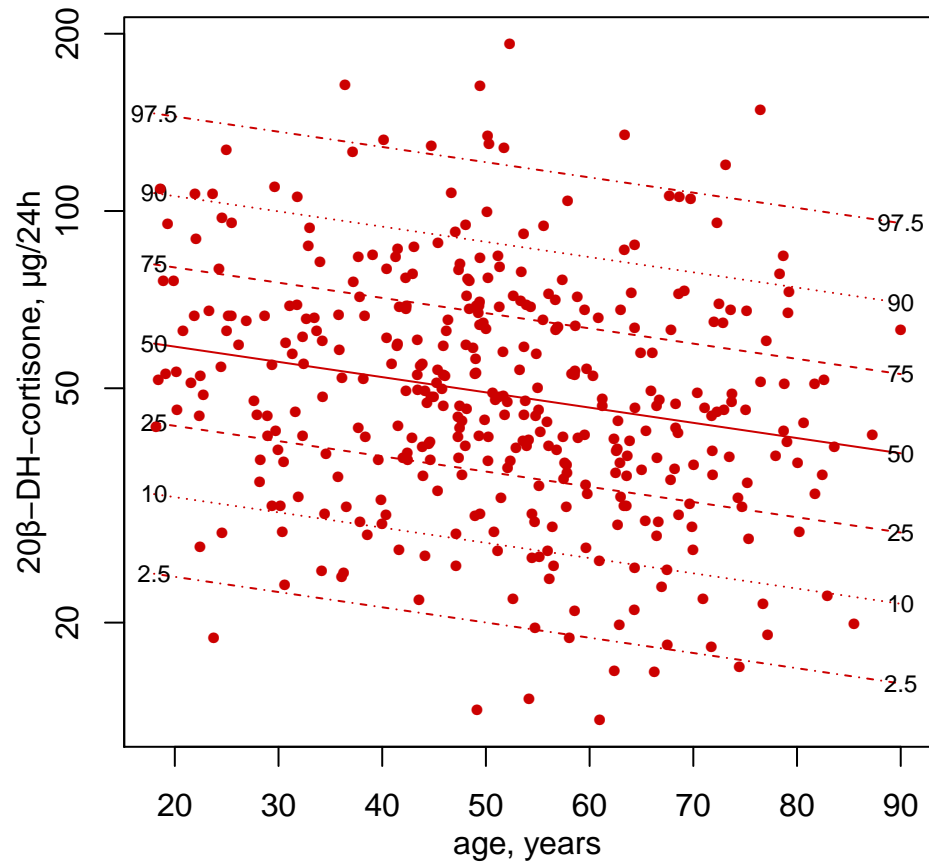


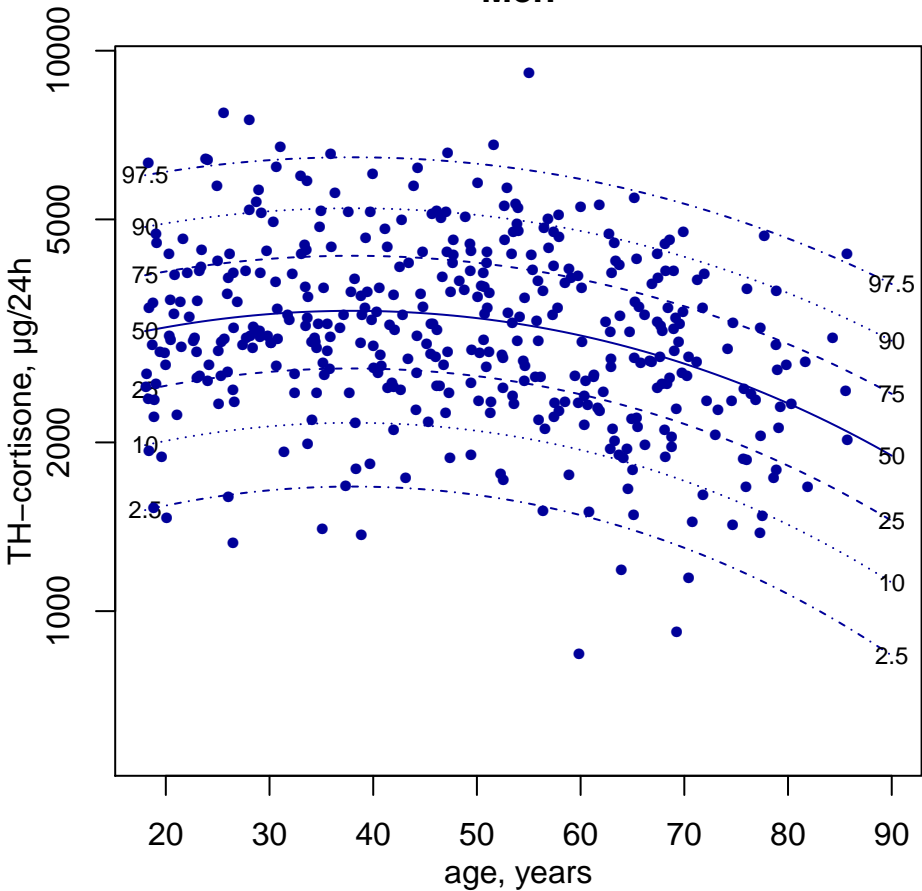
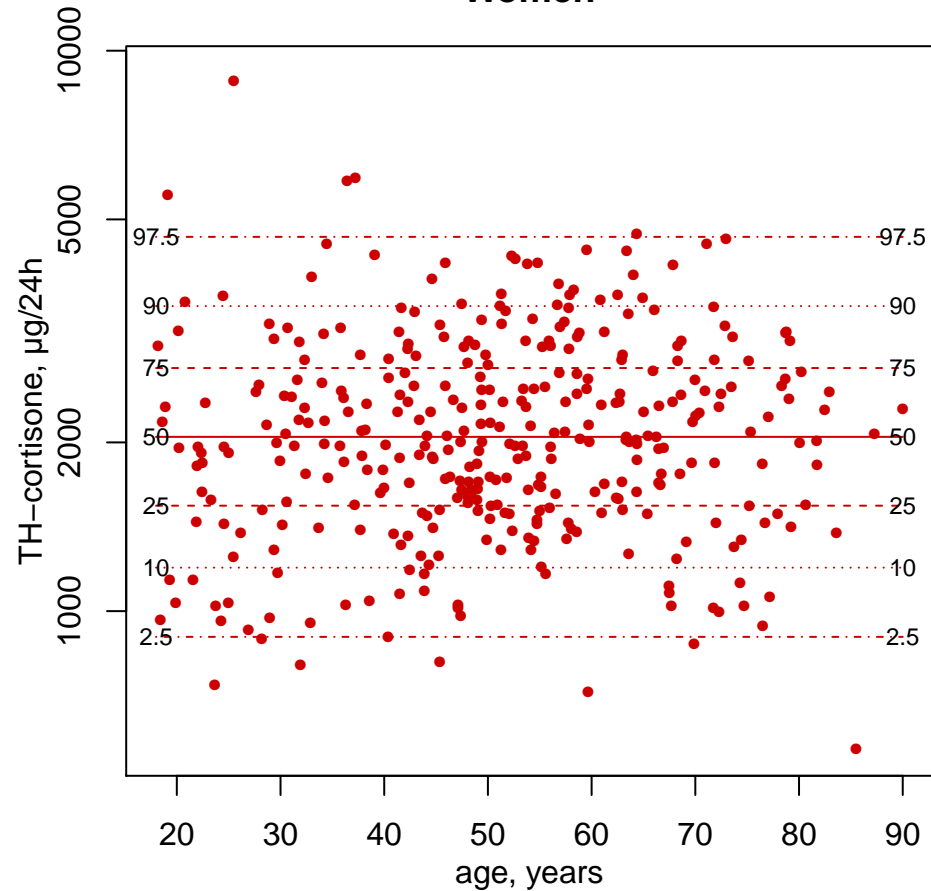
**Men****Women**

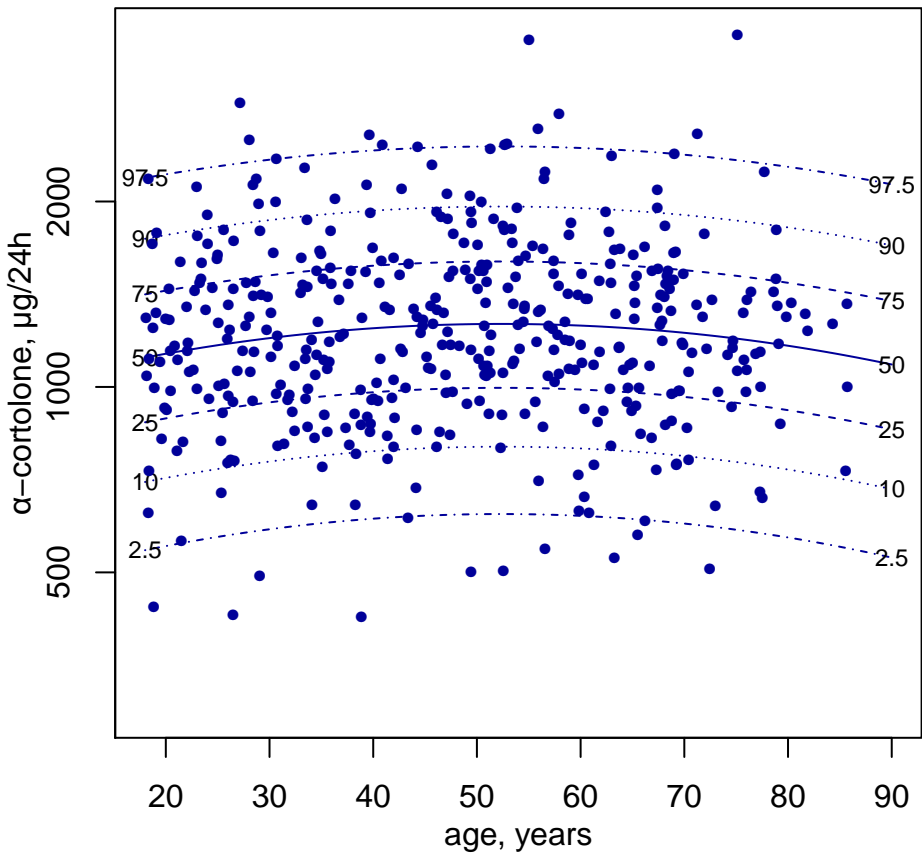
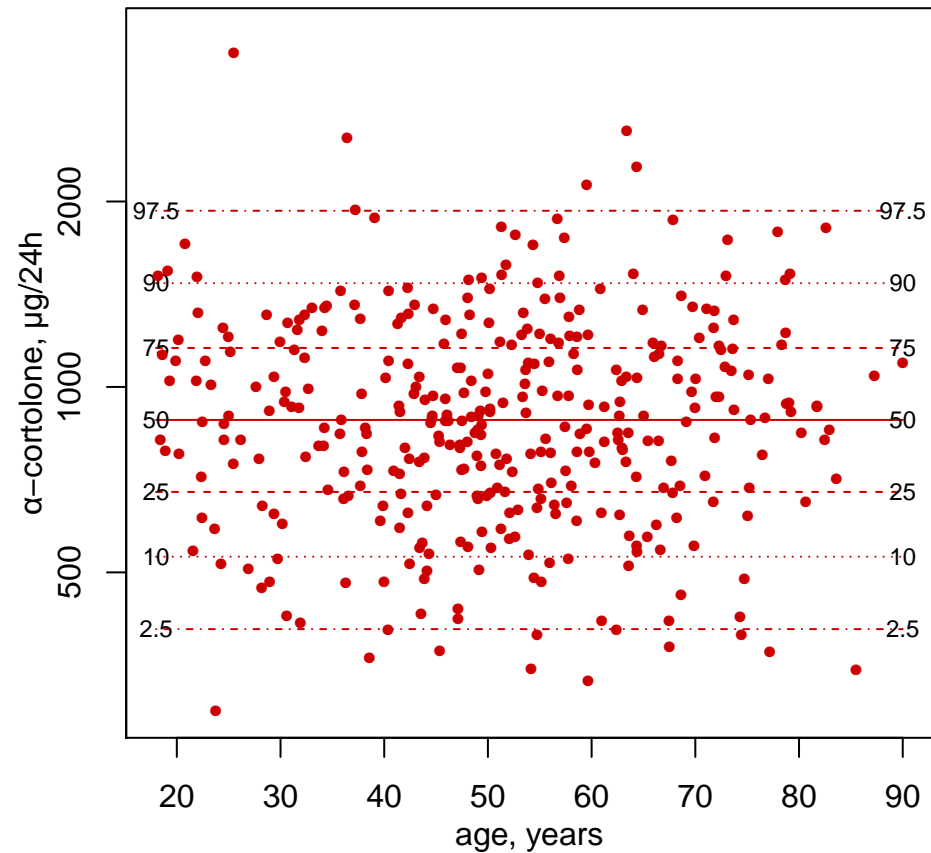
## Men



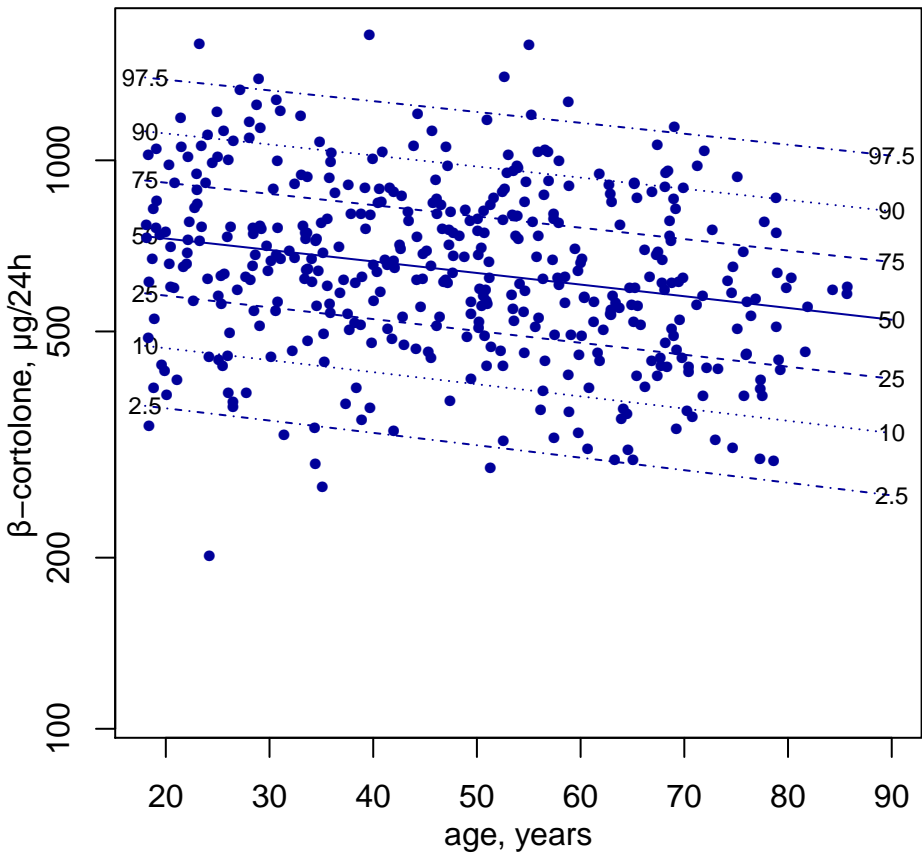
## Women



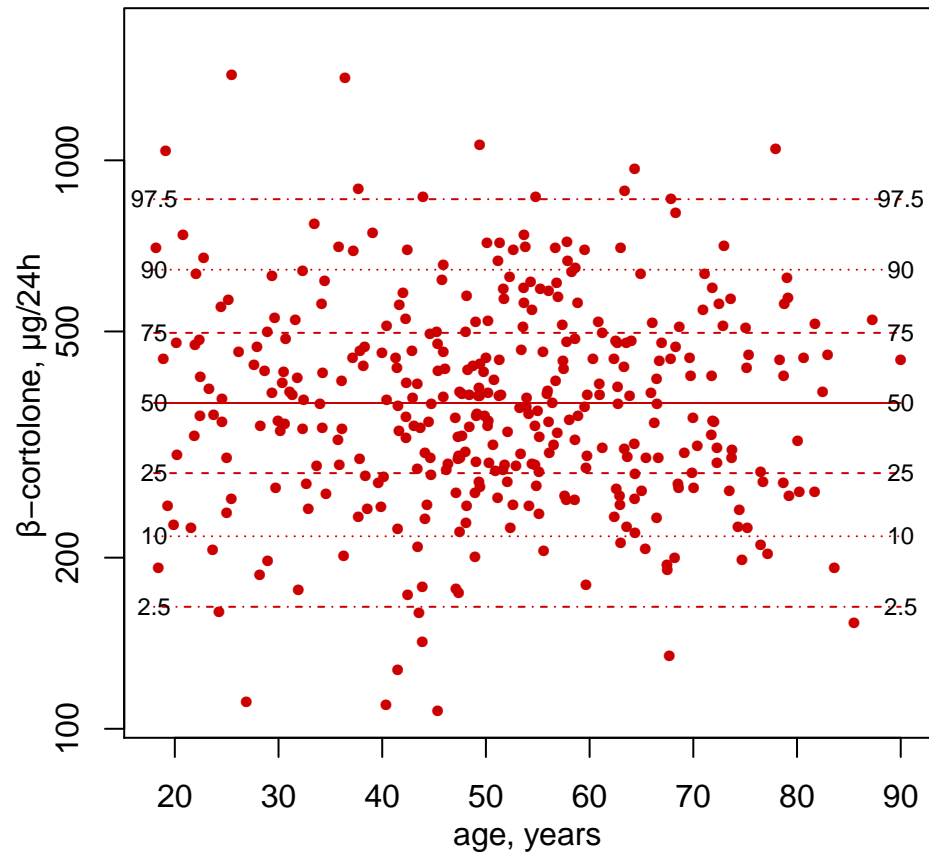
**Men****Women**

**Men****Women**

## Men

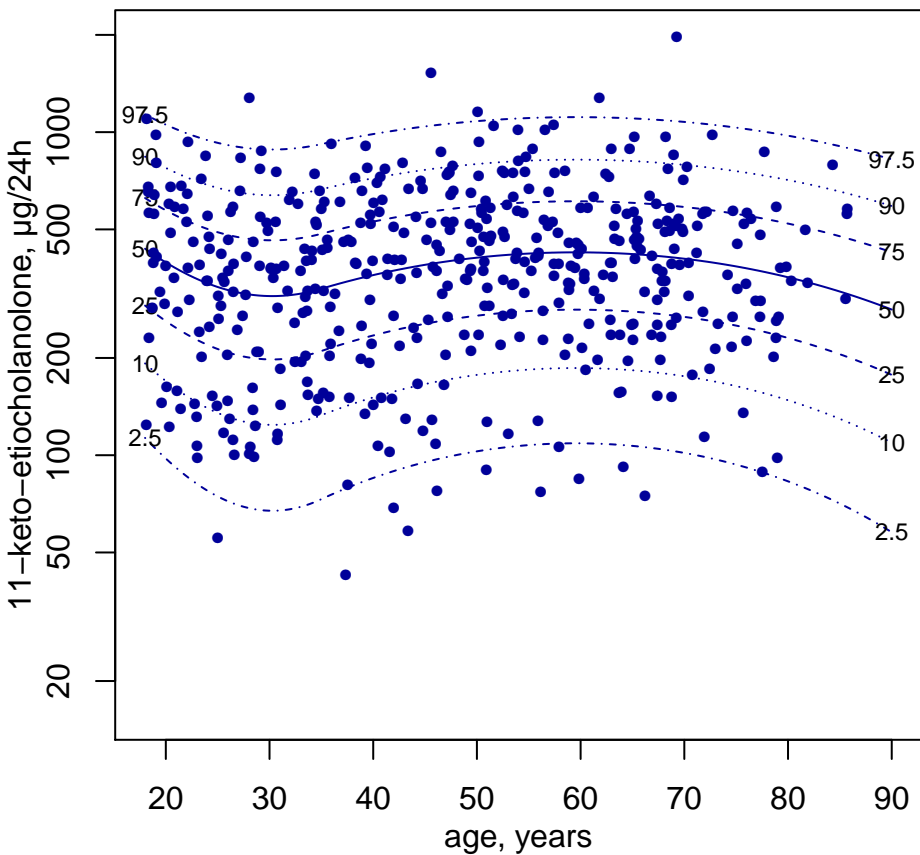


## Women





## Men



## Women

