

Supplementary Online Content

Sahai V, Catalano PJ, Zalupski MM, et al. Nab-paclitaxel and gemcitabine as first-line treatment of advanced or metastatic cholangiocarcinoma: a phase 2 clinical trial. *JAMA Oncol*. Published online August 30, 2018. doi:10.1001/jamaoncol.2018.3277

eTable. Treatment-Related Adverse Events ($\geq 10\%$ Frequency)

eFigure. Kaplan-Meier Curves for (A) Progression-Free Survival and (B) Overall Survival by Decline in CA19-9 (<50% vs $\geq 50\%$)

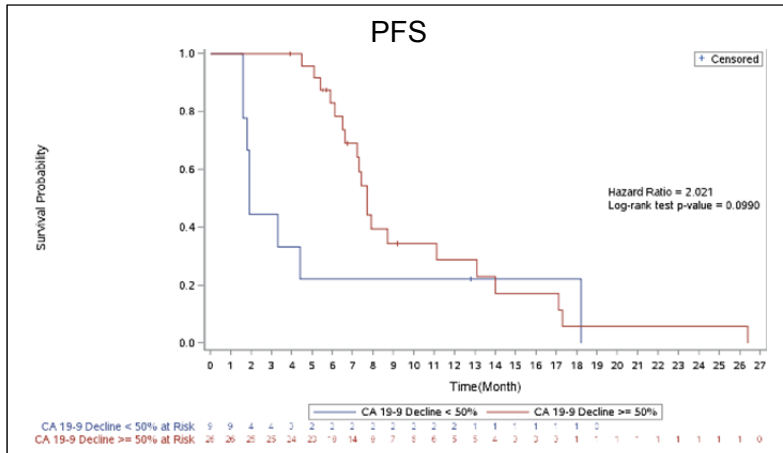
This supplementary material has been provided by the authors to give readers additional information about their work.

eTable. Treatment-Related Adverse Events (≥10% Frequency)

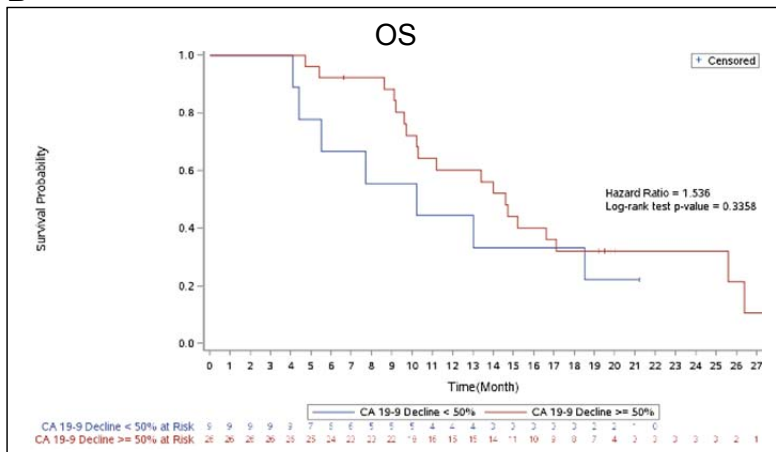
Event	N	%
Patients with ≥1 TRAE	72	97.3
Hematologic events		
Neutropenia	40	67.6
Anemia	29	39.2
Thrombocytopenia	16	21.6
Leukopenia	15	20.3
Non-hematologic events		
Fatigue	52	70.3
Peripheral neuropathy	41	55.4
Alopecia	38	51.4
Nausea	33	44.6
Peripheral edema	32	42.2
Diarrhea	28	37.8
Decreased appetite	25	33.8
Constipation	18	24.3
Vomiting	16	21.6
Pyrexia	14	18.9
Dysgeusia	14	18.9
Weight loss	12	16.2
Muscular weakness	11	14.9
Dyspnea	10	13.5
Elevated blood alkaline phosphatase level	10	13.5
Elevated alanine aminotransferase level	9	12.2
Elevated aspartate aminotransferase level	9	12.2
Arthralgia	8	10.8
Chills	8	10.8
Stomatitis	8	10.8
Abbreviation: TRAE, treatment-related adverse event		

eFigure. Kaplan-Meier Curves for (A) Progression-Free Survival and (B) Overall Survival by Decline in CA19-9 (<50% vs ≥50%)

A



B



CA, carbohydrate antigen; OS, overall survival, PFS, progression-free survival