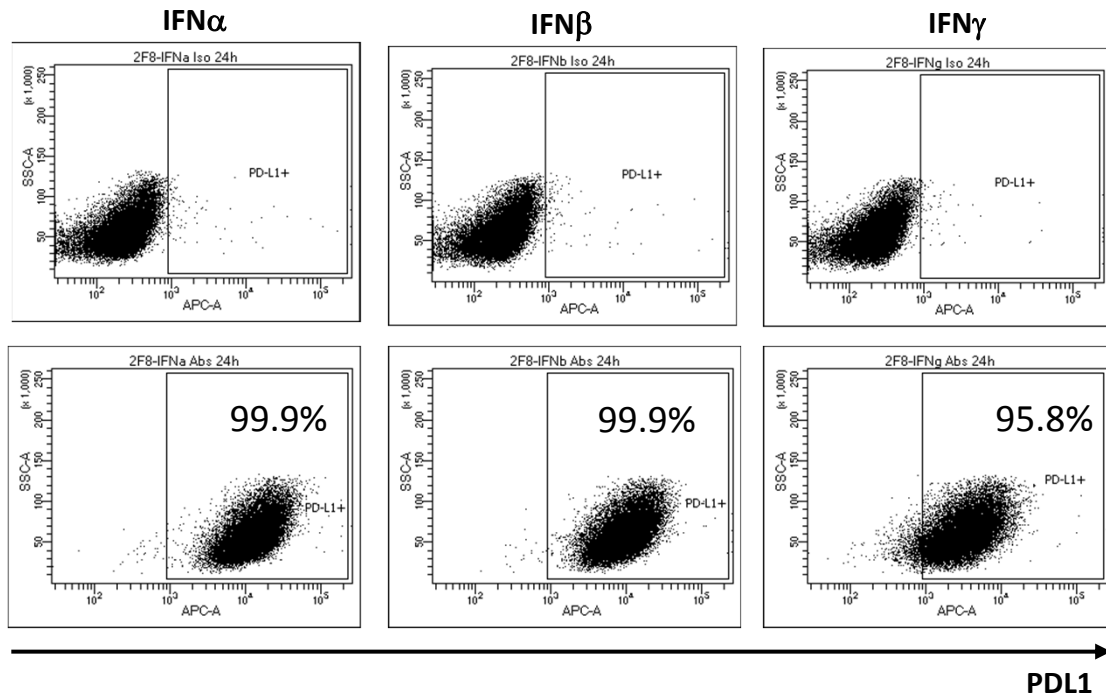


Suppl. Fig. 3. PD-L1 expression in response to interferons.



Supplementary Figure 3. PD-L1 expression detected by flow cytometry in 2F8 cells treated with IFN α (10,000 IU/ml), IFN β (10,000 IU/ml), or IFN γ (10 ng/ml) for 24 hours. Percentages represent positive cells. Gates were set up based on staining with isotype control antibody (top panels).