

SUPPLEMENTARY DATA FOR

The antitumor activity of CYB-L10, a human topoisomerase IB catalytic inhibitor

Qian Yu^a, Yu Chen^a, Hui Yang^a, Hong-Li Zhang^a, Keli Agama^b, Yves Pommier^b, Lin-Kun An^{a,*}

^aSchool of Pharmaceutical Sciences, Sun Yat-sen University, Guangzhou, 510006, China;

^bDevelopmental Therapeutics Branch and Laboratory of Molecular Pharmacology, Center for Cancer Research, National Cancer Institute, Bethesda, MD 20892-4255, United States

*: Corresponding author: Lin-Kun An

Tel. and fax: +86-20-39943413

E-mail address: lssalk@mail.sysu.edu.cn

Content

Figure S1 (TOP2-mediated relaxation assay)	S2
---	----

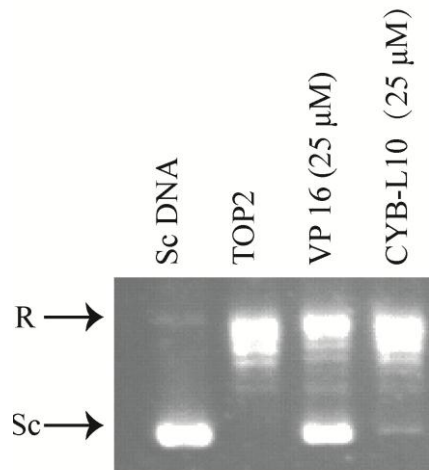


Figure S1. TOP2-mediated relaxation assay. Lane 1, supercoiled pBR322 DNA alone; Lane 2, DNA and enzyme; Lanes 3, DNA, enzyme and the positive control etoposide (VP16) at 25 μ M; Lanes 4, DNA, enzyme and CYB-L10 at 25 μ M. R: relaxed DNA. Sc: supercoiled DNA.