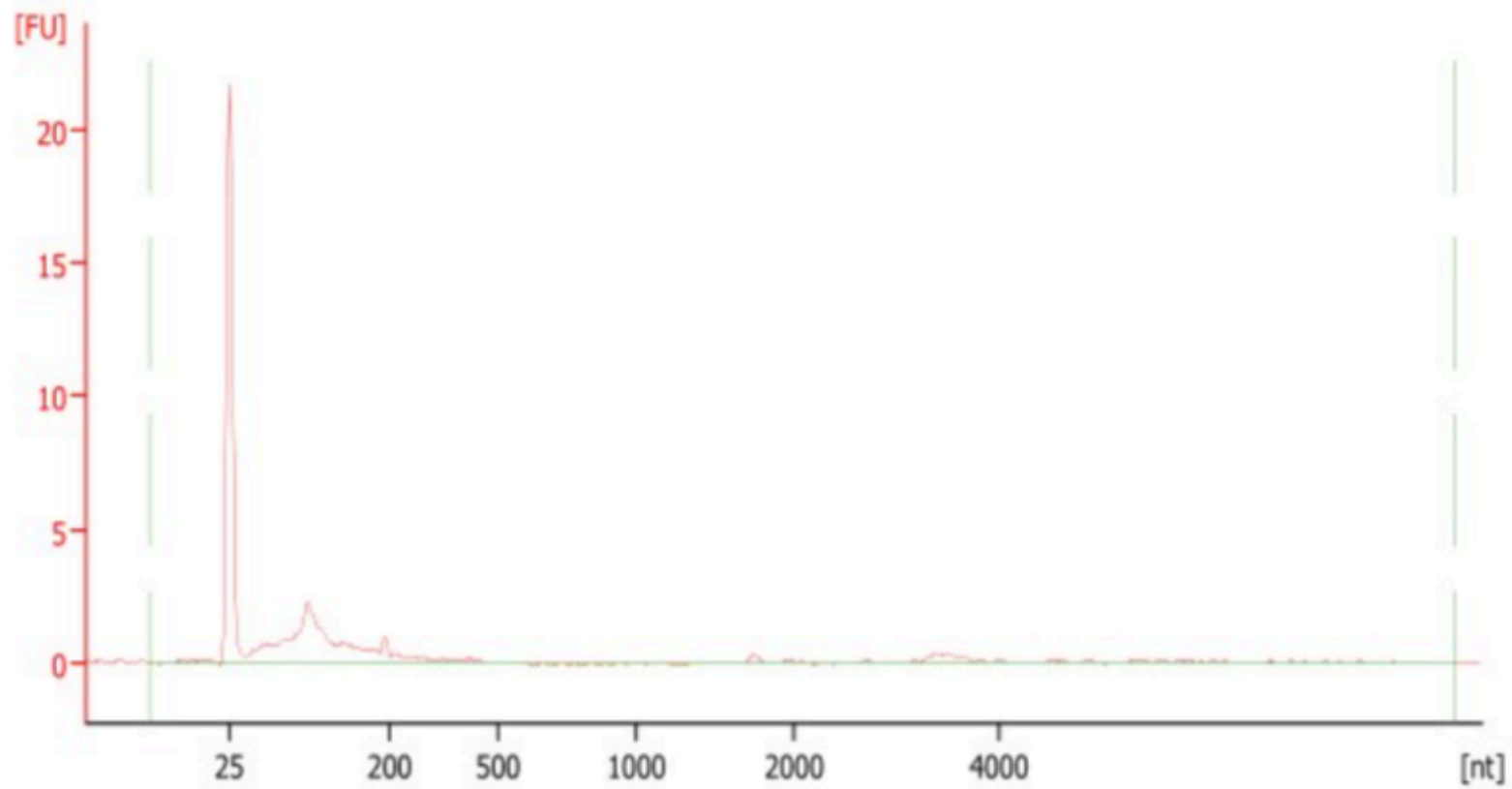


1\_C [ 1:9 ]



**Overall Results for sample 1 : 1\_C**

RNA Area: 21.4

RNA Concentration: 65 pg/ $\mu$ l

rRNA Ratio [28s / 18s]: 0.0

RNA Integrity Number (RIN):

1.1 (B.02.07)

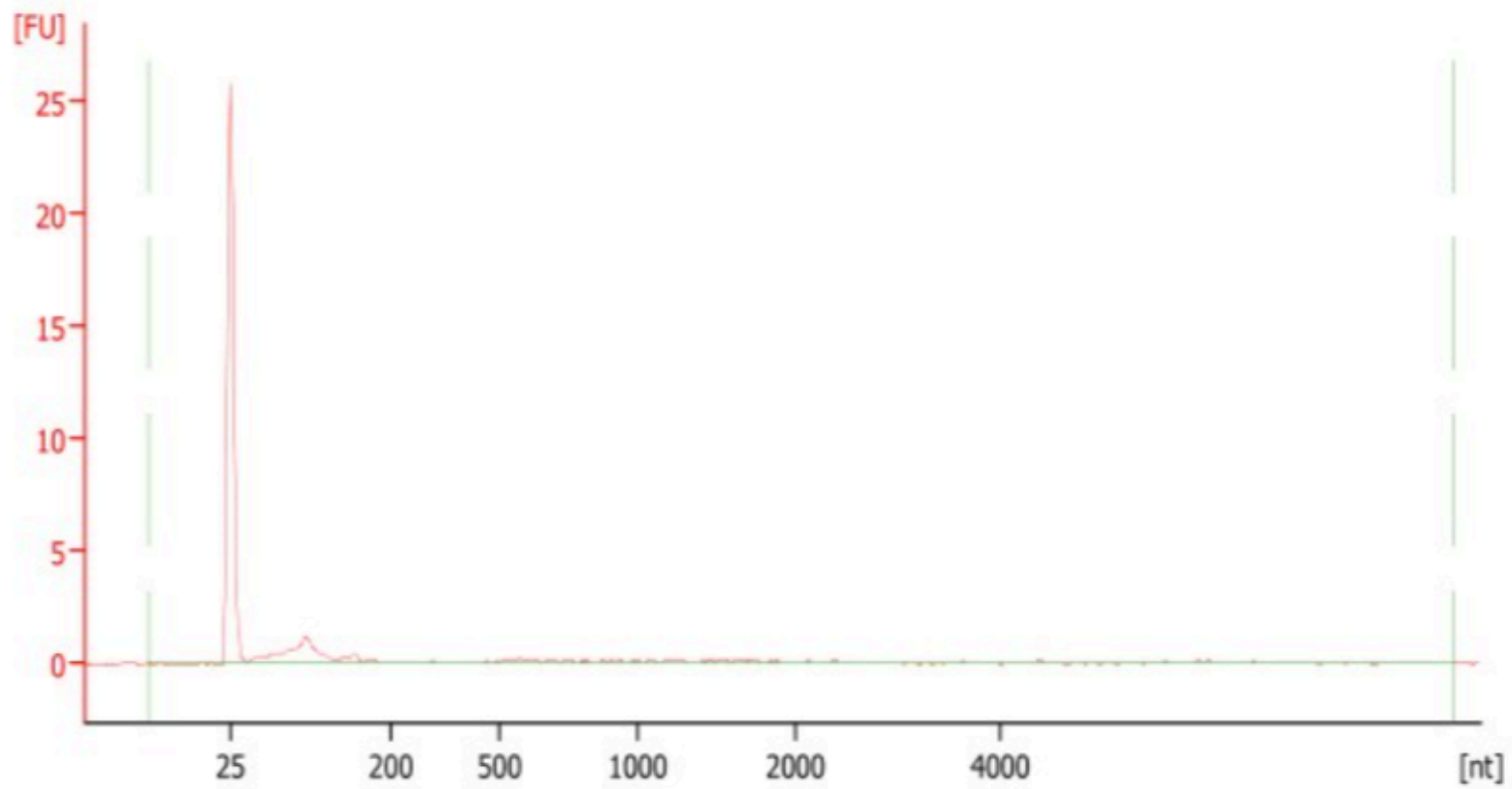
Result Flagging Color:



Result Flagging Label:

RIN: 1.10

2\_C [ 1:9 ]



**Overall Results for sample 3 : 2\_C**

RNA Area: 11.8

RNA Concentration: 36 pg/ $\mu$ l

rRNA Ratio [28s / 18s]: 0.0

RNA Integrity Number (RIN): 1 (B.02.07)

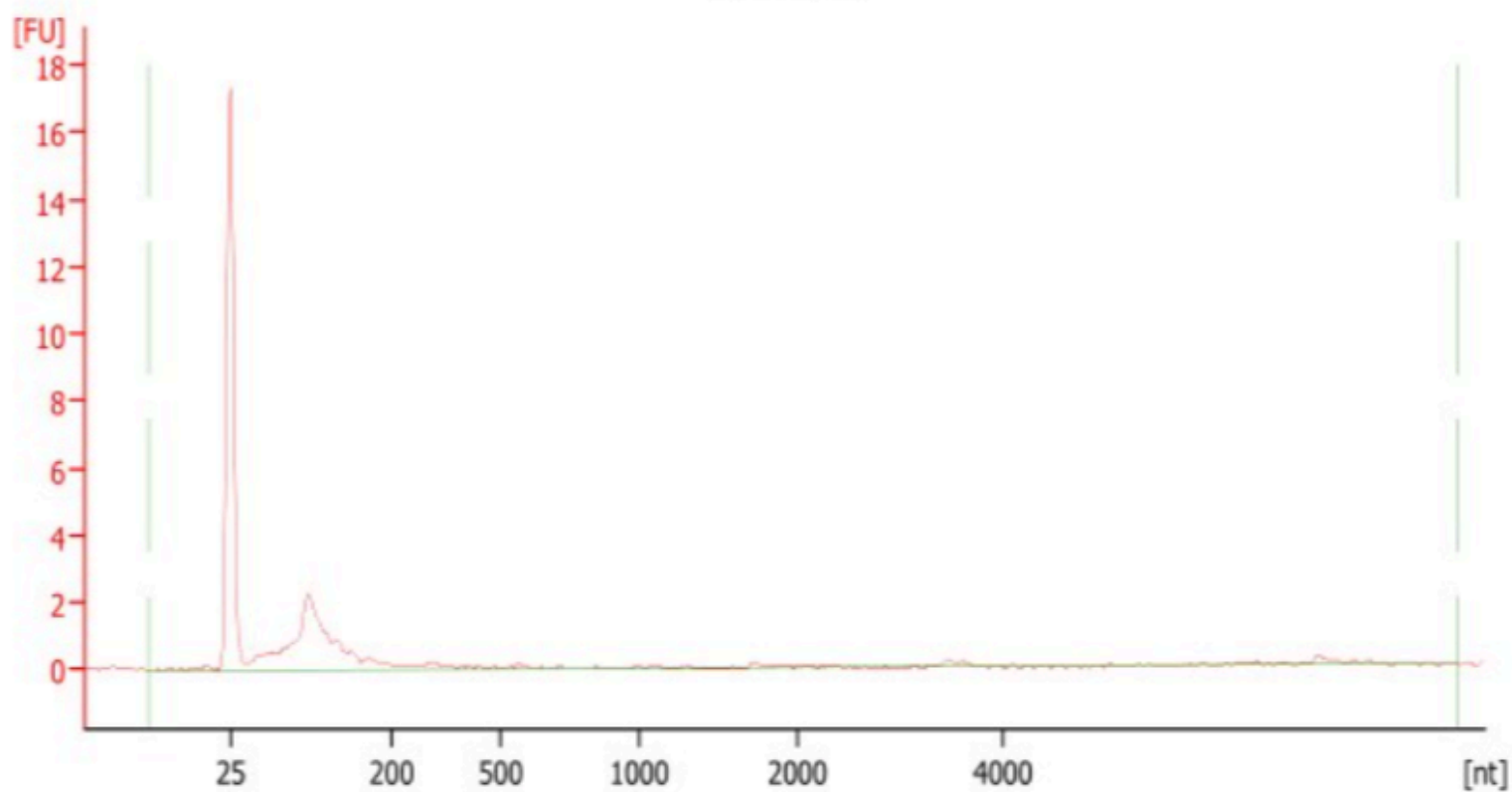
Result Flagging Color:



Result Flagging Label:

RIN:1

3\_C [ 1:9 ]



**Overall Results for sample 5 : 3\_C**

RNA Area: 20.7

RNA Concentration: 63 pg/ $\mu$ l

rRNA Ratio [28s / 18s]: 0.0

RNA Integrity Number (RIN): 1.3 (B.02.07)

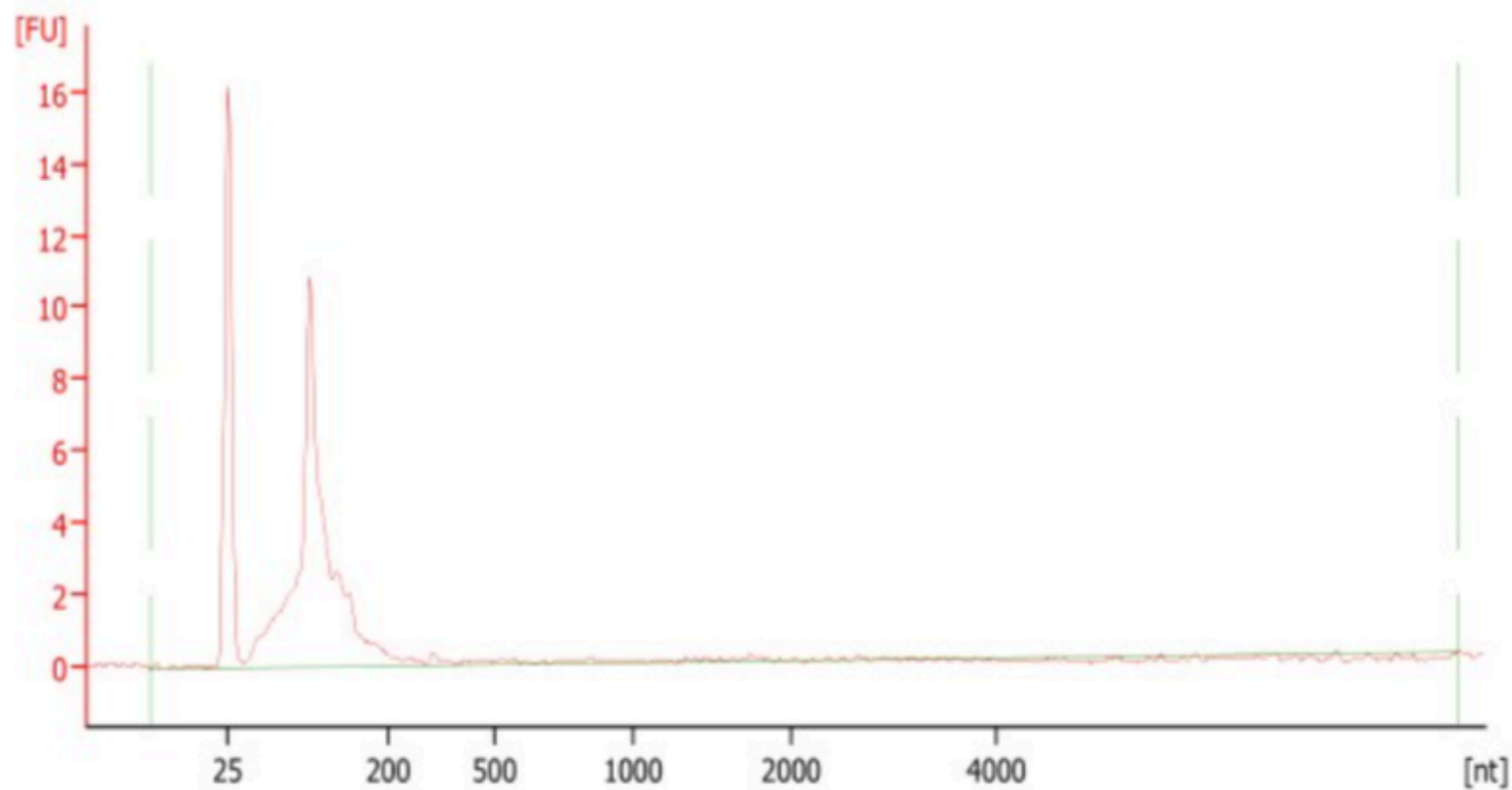
Result Flagging Color:



Result Flagging Label:

RIN: 1.30

4\_C [ 1:9 ]



**Overall Results for sample 7 : 4\_C**

RNA Area: 51.6

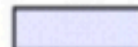
RNA Concentration: 157 pg/ $\mu$ l

rRNA Ratio [28s / 18s]: 0.0

RNA Integrity Number (RIN):

2.6 (B.02.07)

Result Flagging Color:



Result Flagging Label:

RIN: 2.60