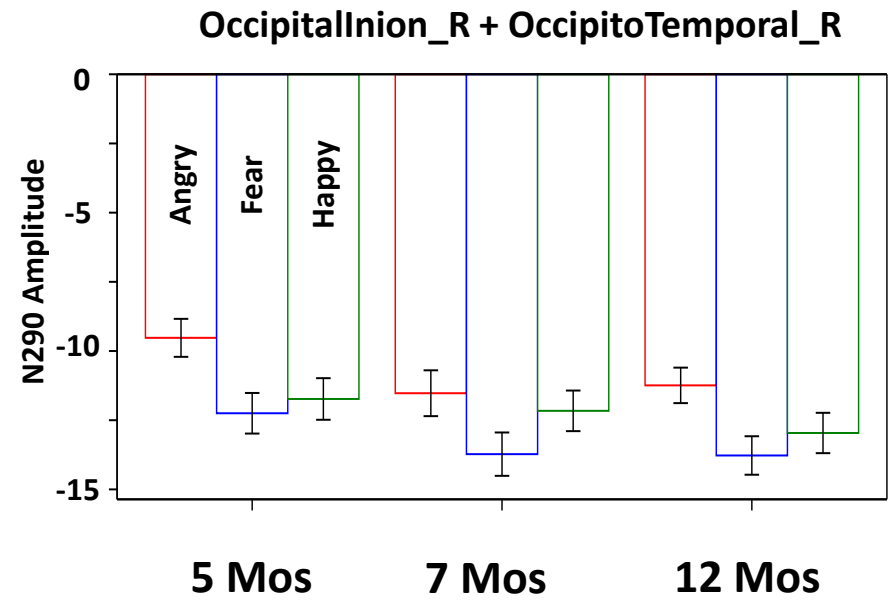
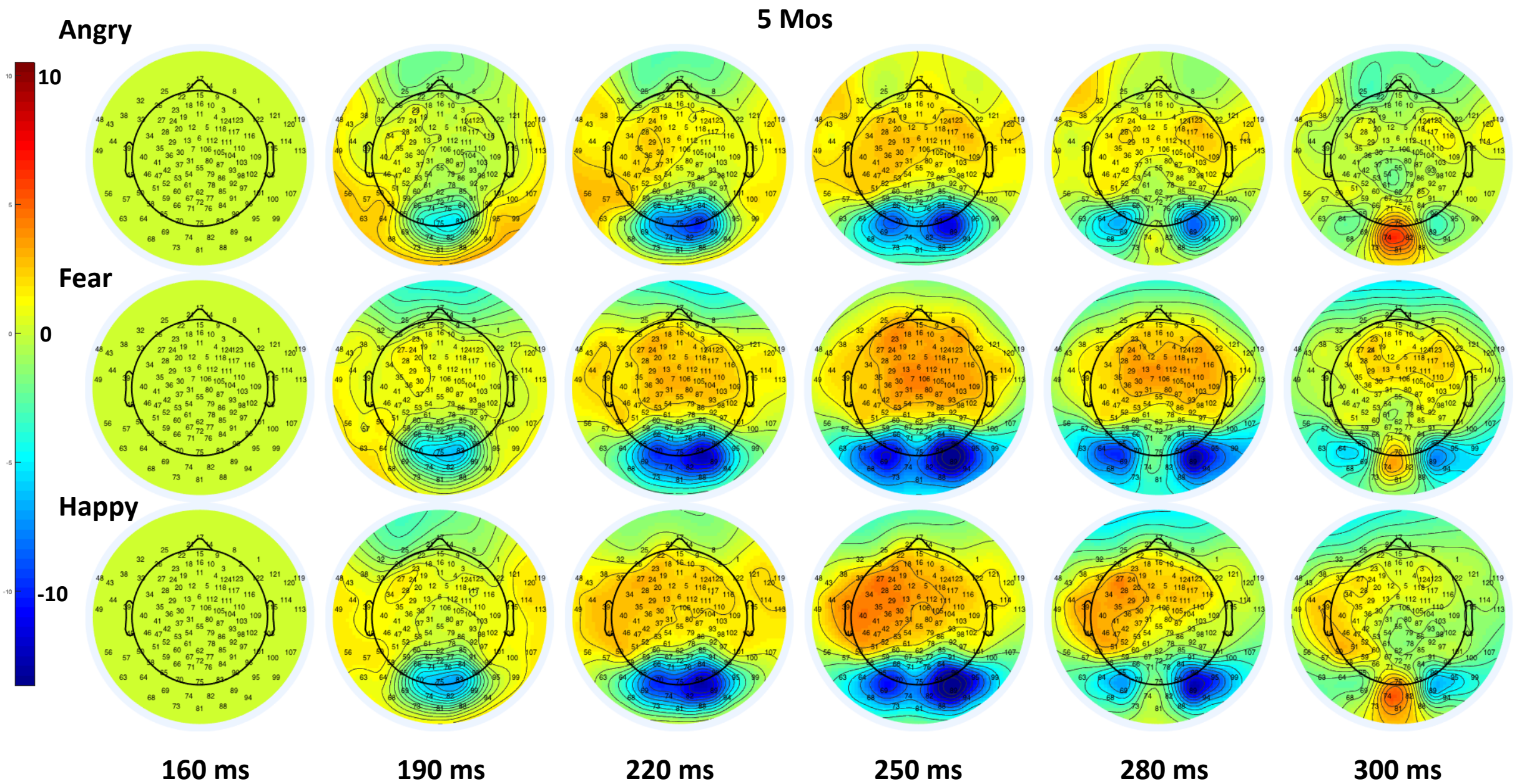


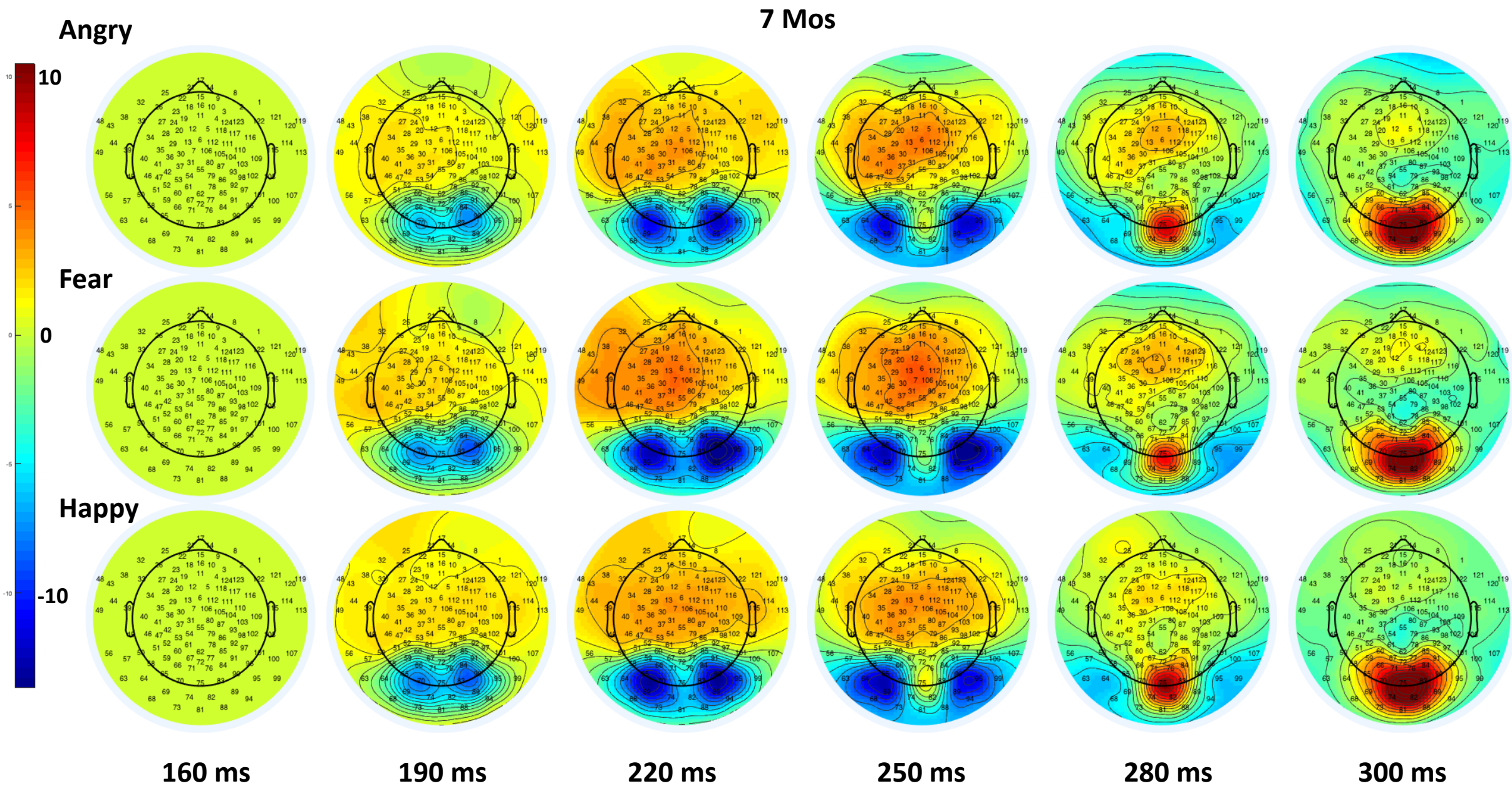
Supplemental Figure 1. N290 Peak-to-Peak amplitude in the two clusters on the right hemisphere



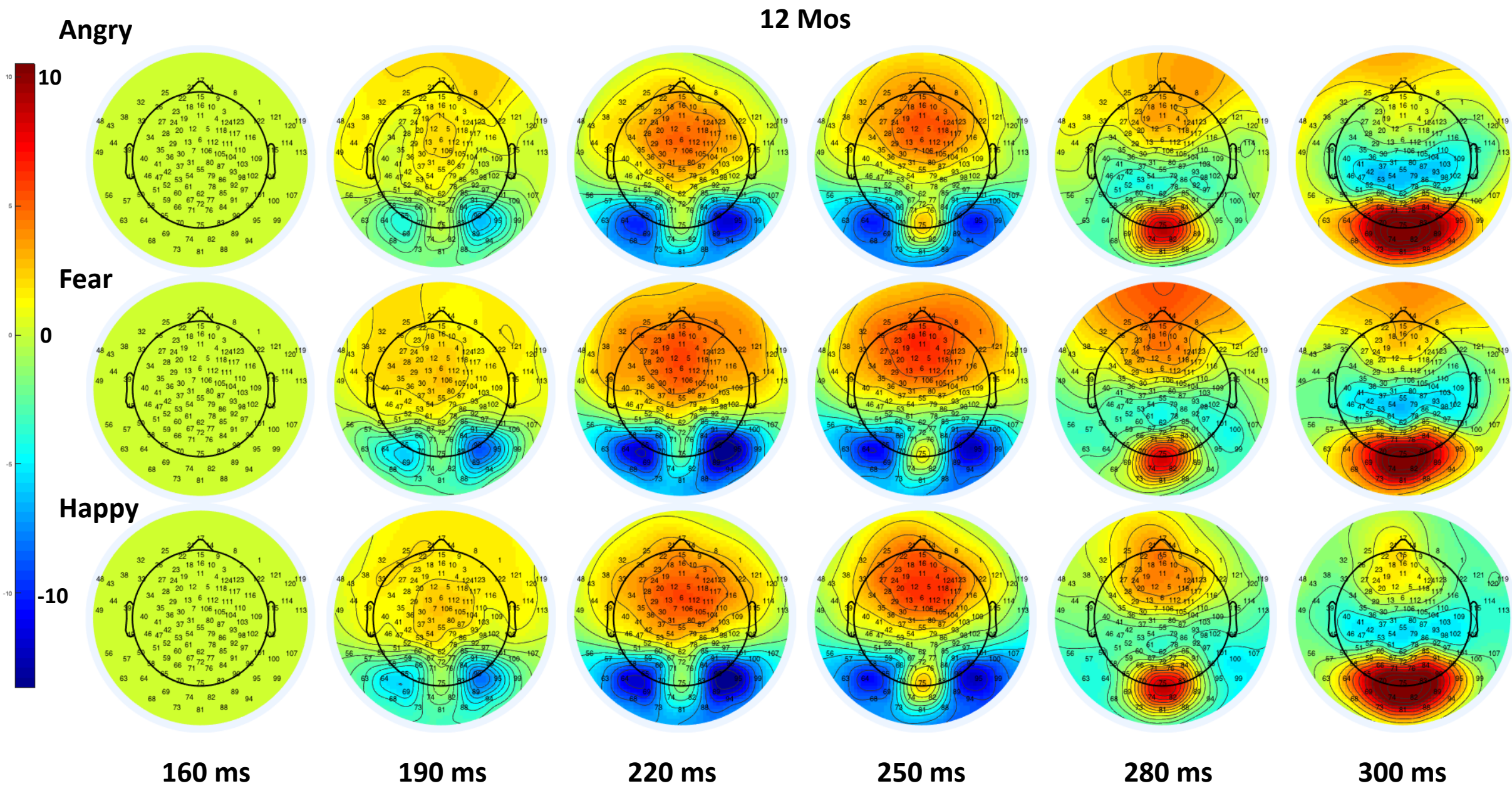
Supplemental Figure 2A. Topographical maps for the N290 activity at 5 months



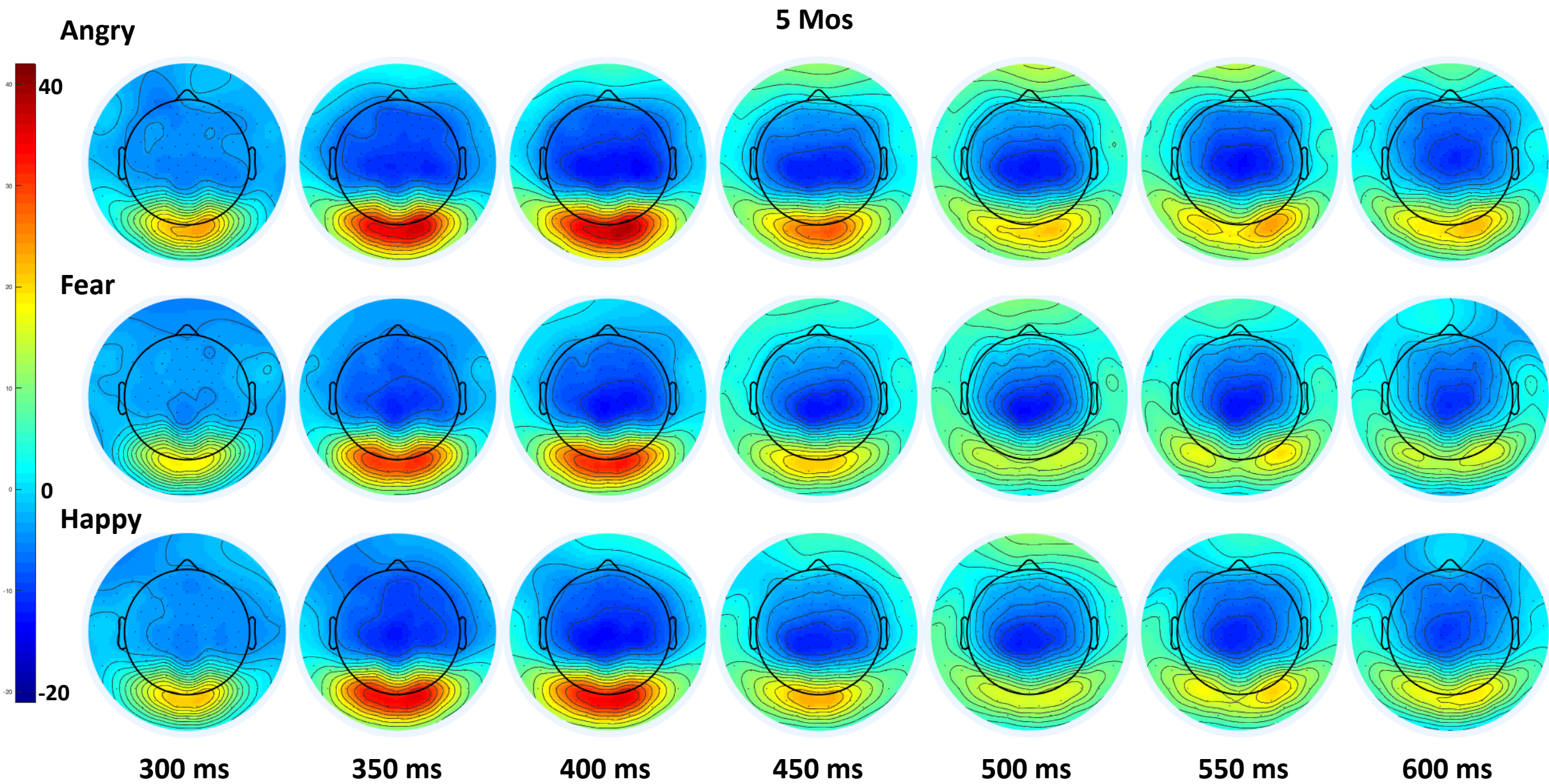
Supplemental Figure 2B. Topographical maps for the N290 activity at 7 months



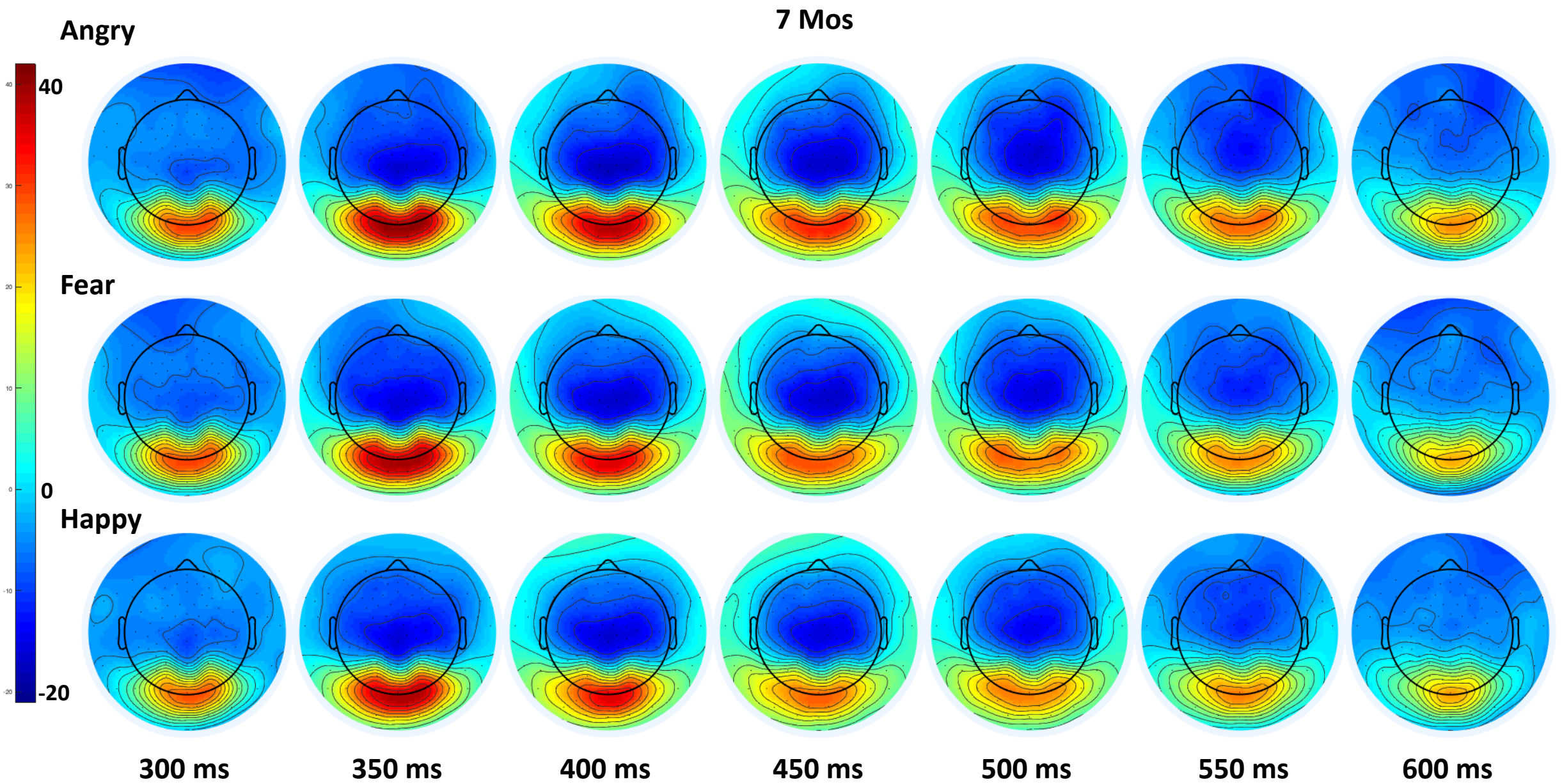
Supplemental Figure 2C. Topographical maps for the N290 activity at 12 months



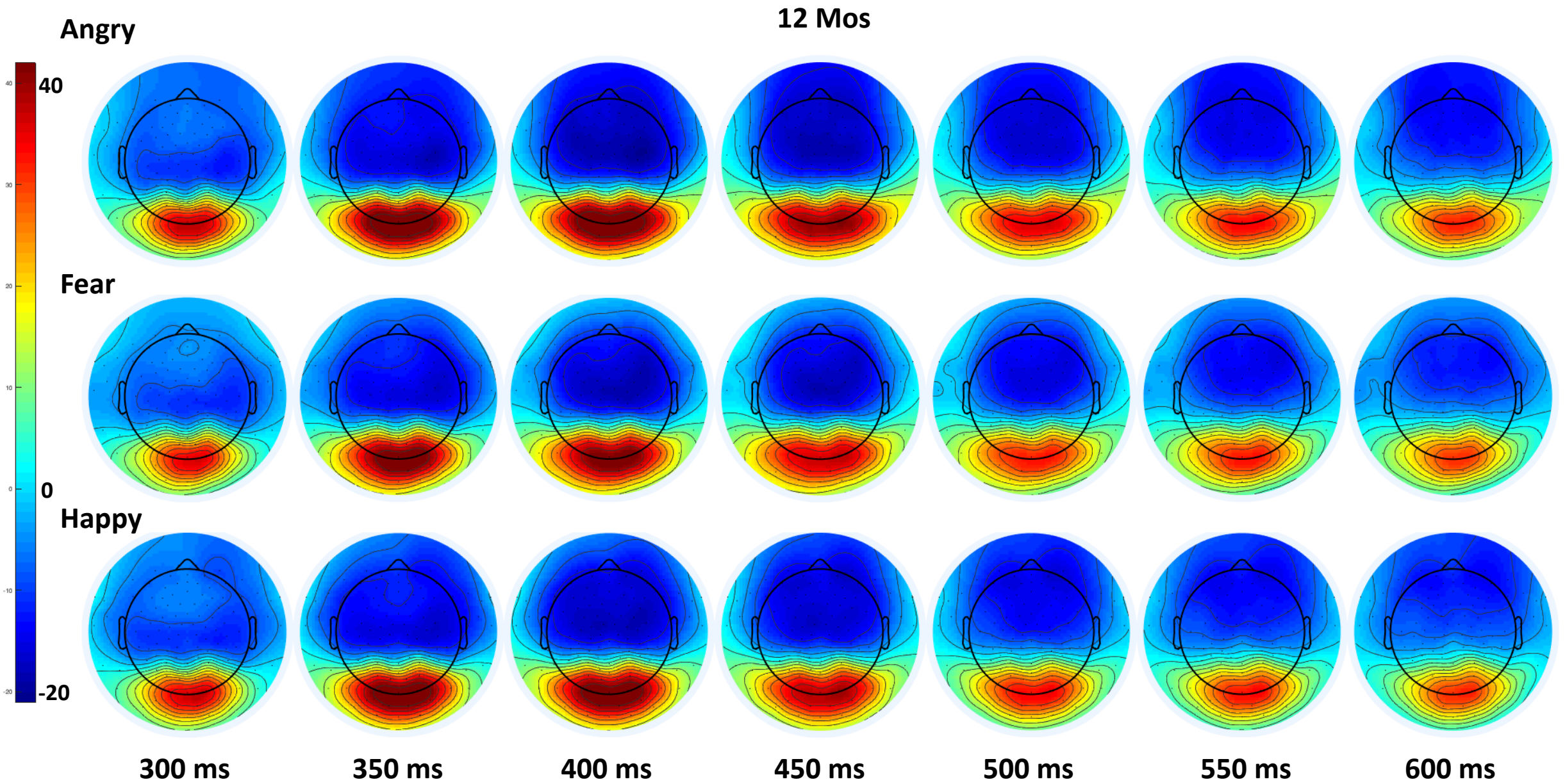
Supplemental Figure 3A. Topographical maps for the P400 and Nc activity at 5 months



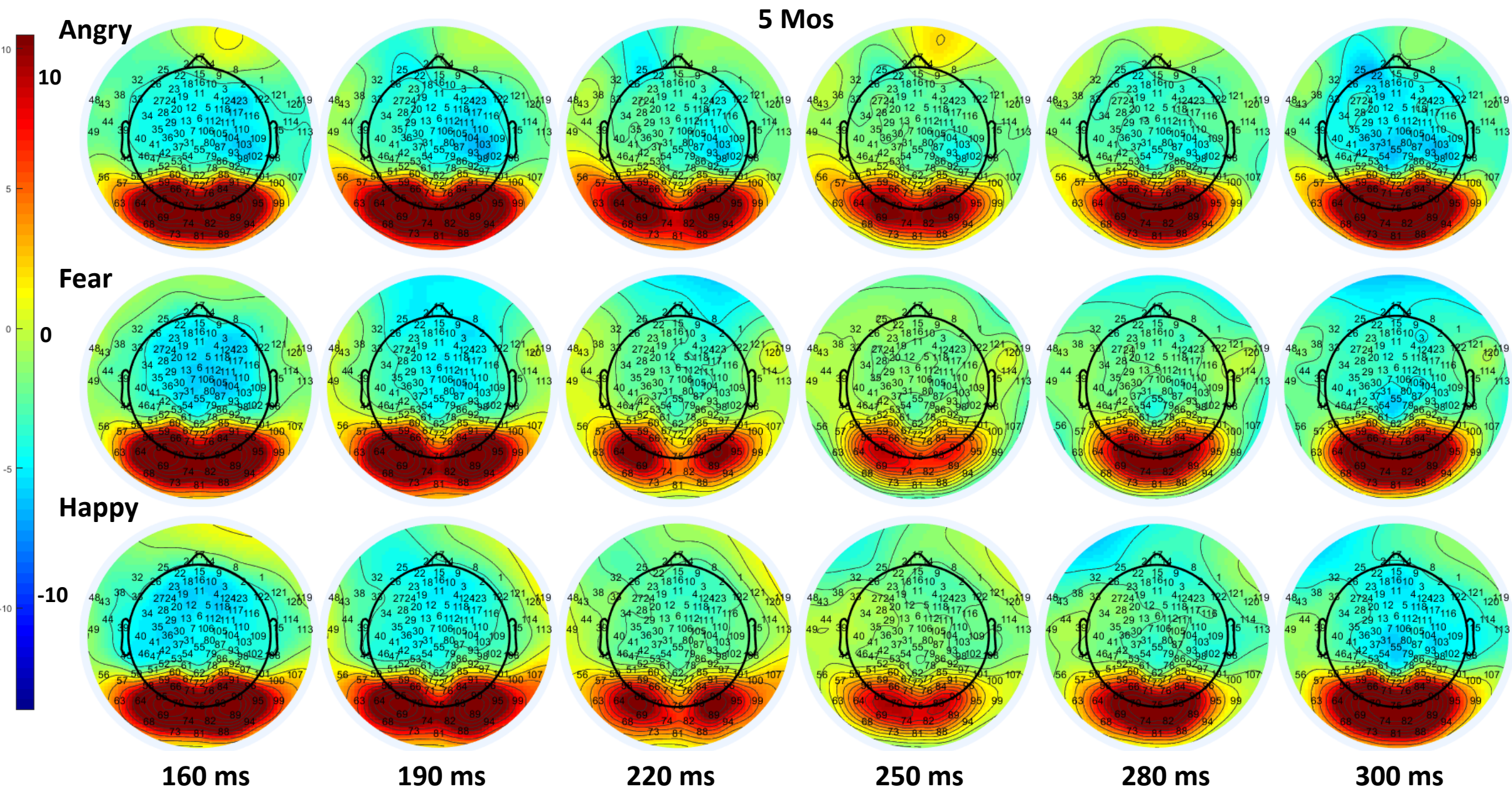
Supplemental Figure 3B. Topographical maps for the P400 and Nc activity at 7 months



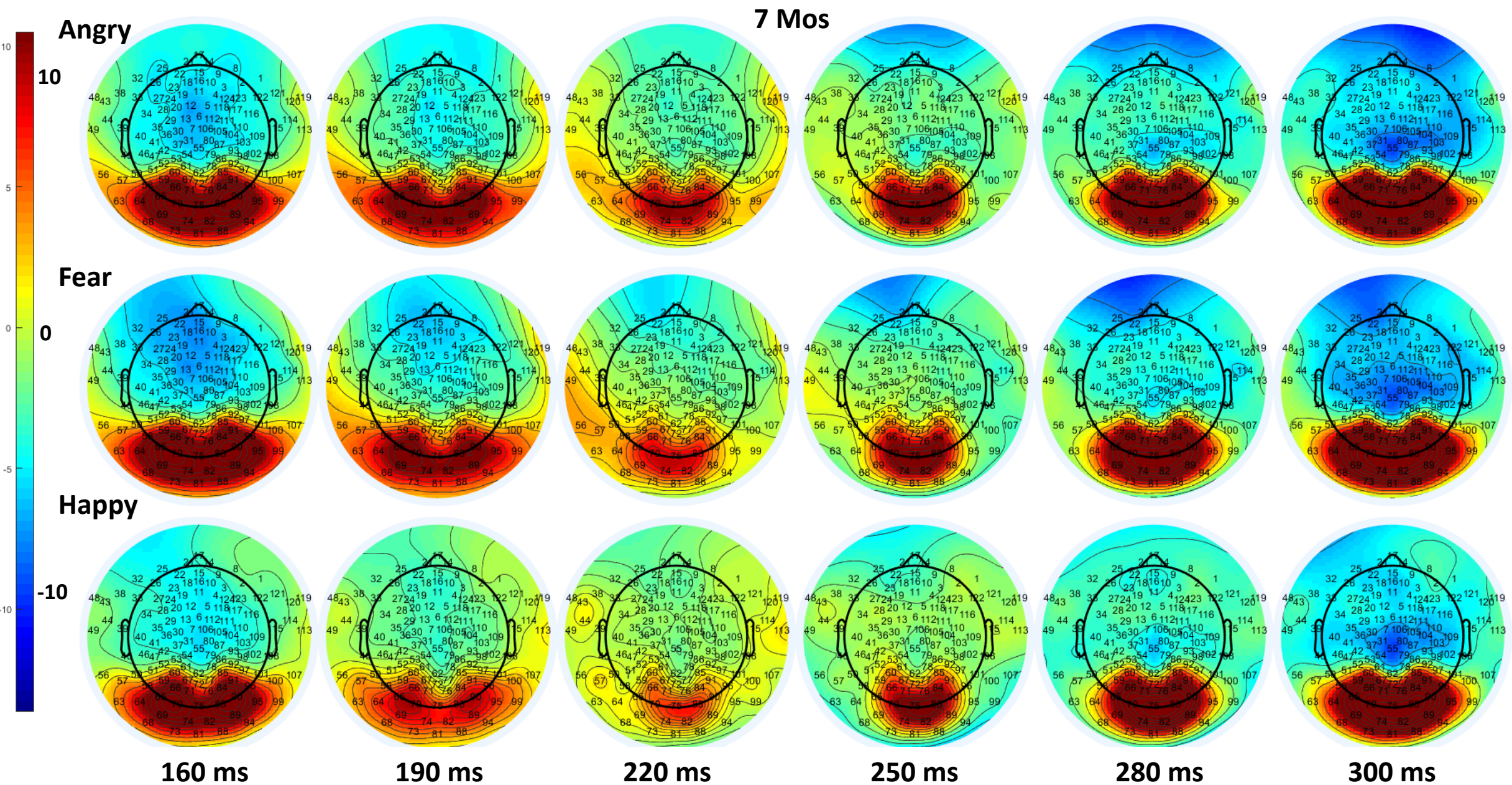
Supplemental Figure 3C. Topographical maps for the P400 and Nc activity at 12 months



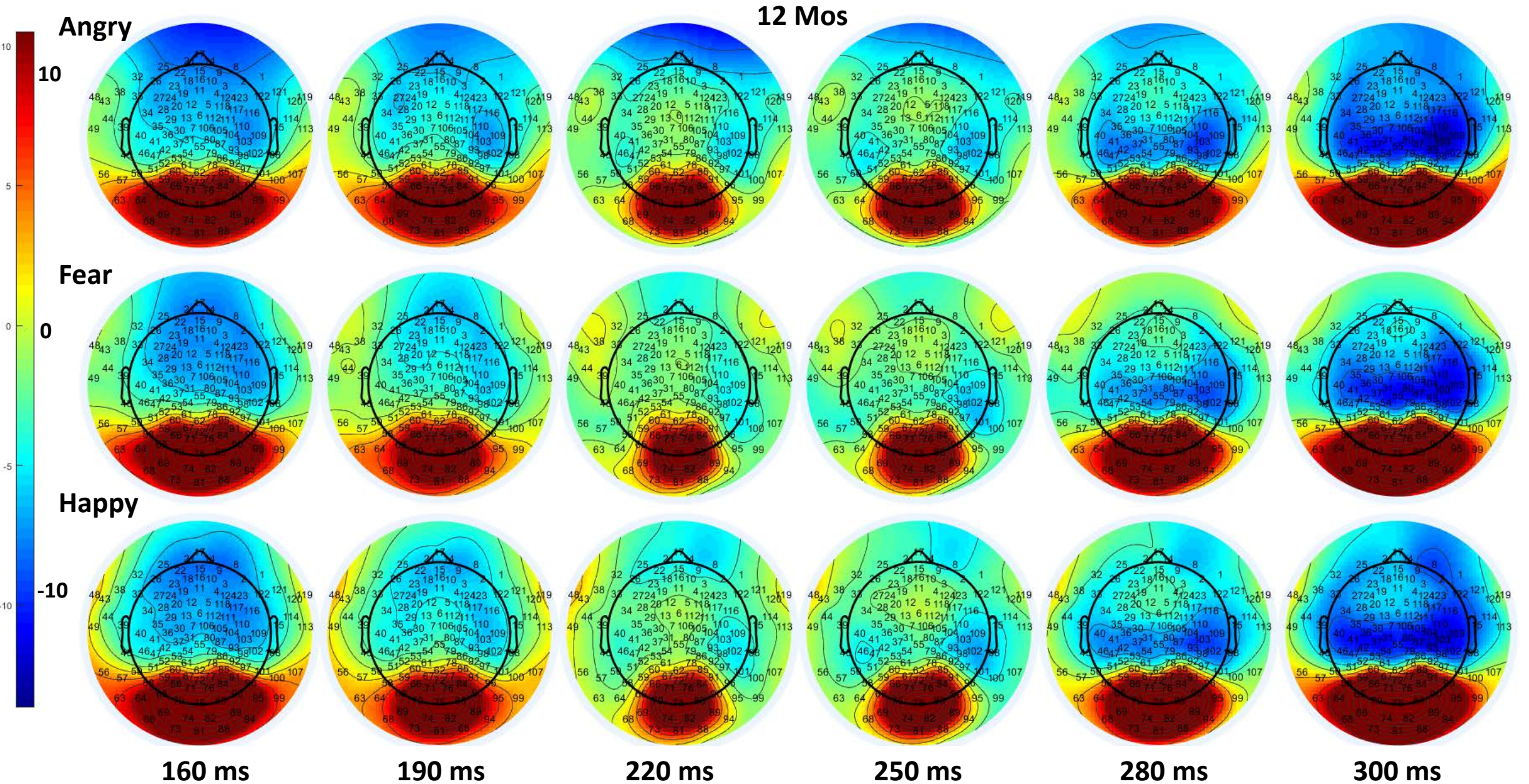
Supplemental Figure 4A. Topographical maps for the Uncorrected N290 activity at 5 months



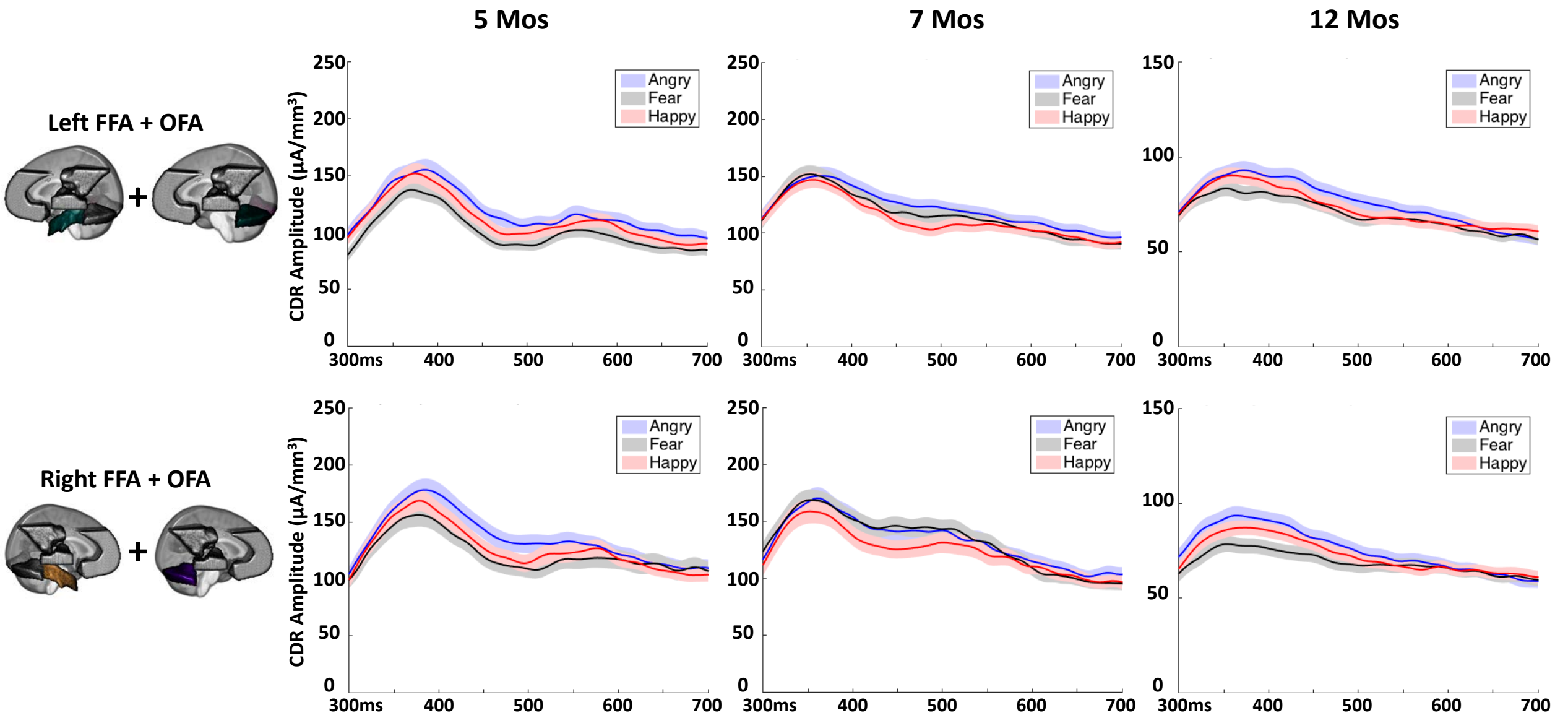
Supplemental Figure 4B. Topographical maps for the Uncorrected N290 activity at 7 months



Supplemental Figure 4C. Topographical maps for the Uncorrected N290 activity at 12 months

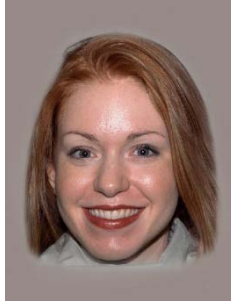


Supplemental Figure 5. Source activation in the inferior occipital and temporal regions (OFA + FFA) in the P400/Nc time window.



Supplemental Figure 6. Examples of the NimStim face stimuli used in the current study

Happy



Angry



Fearful

