

Supplementary Data 1

Ye et al.

Raw data for immunoblotting

Fig. 2a

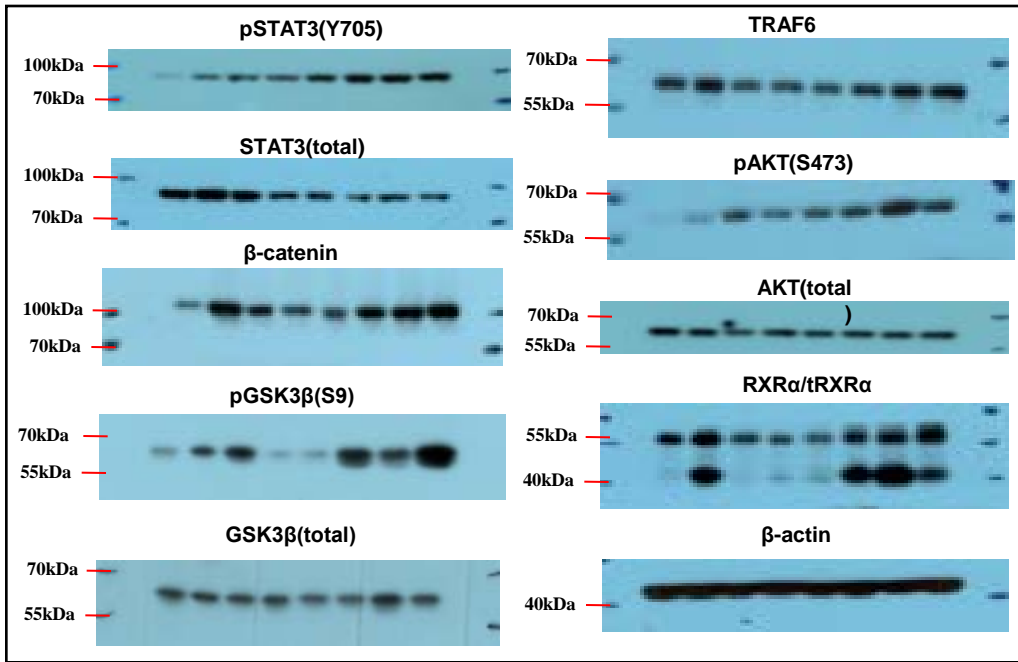


Fig. 2b

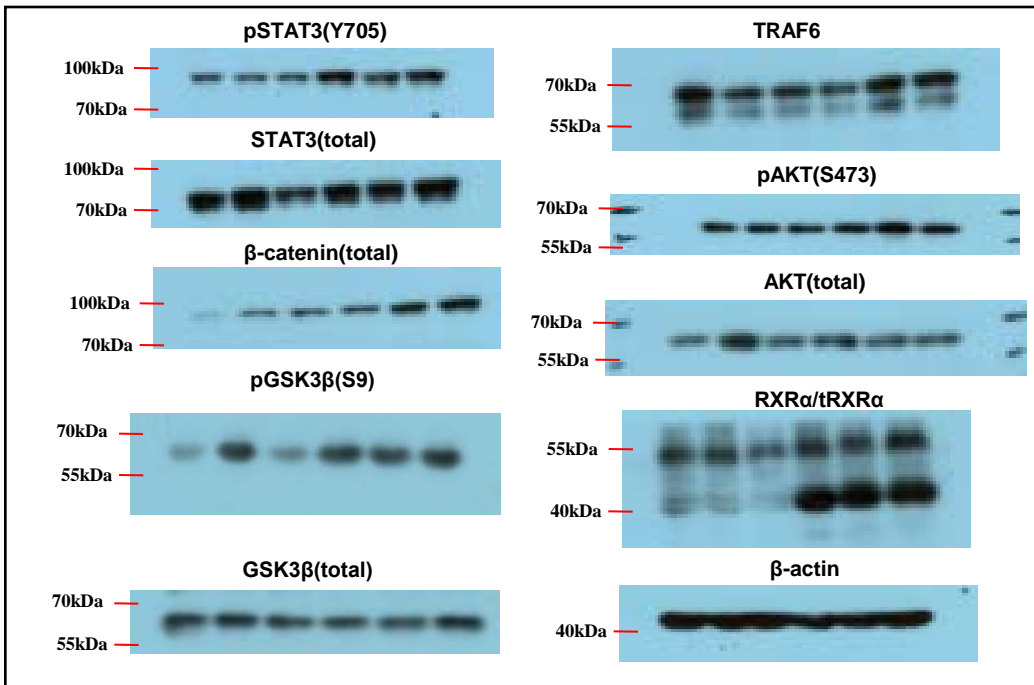


Fig. 2f

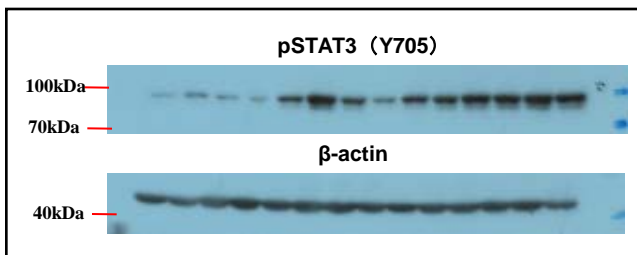


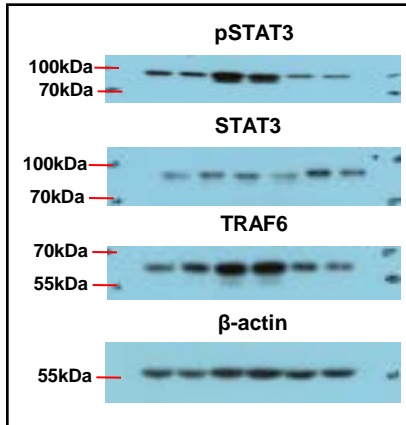
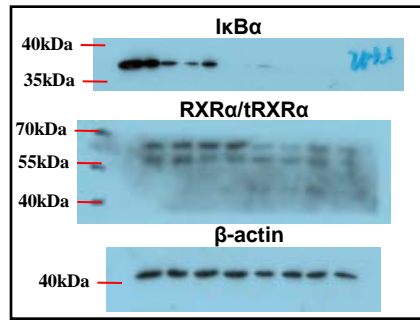
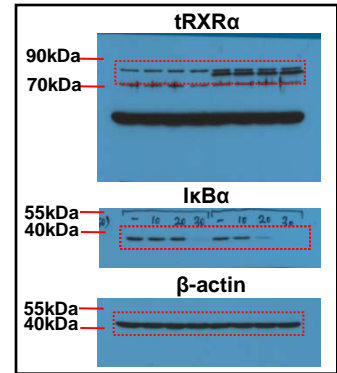
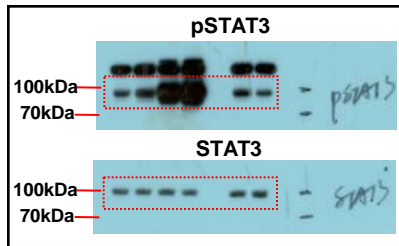
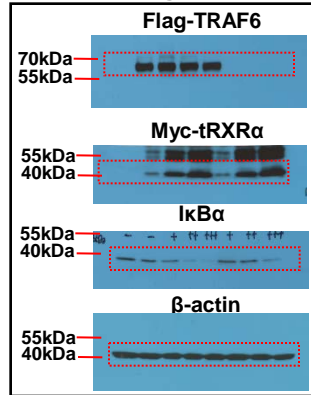
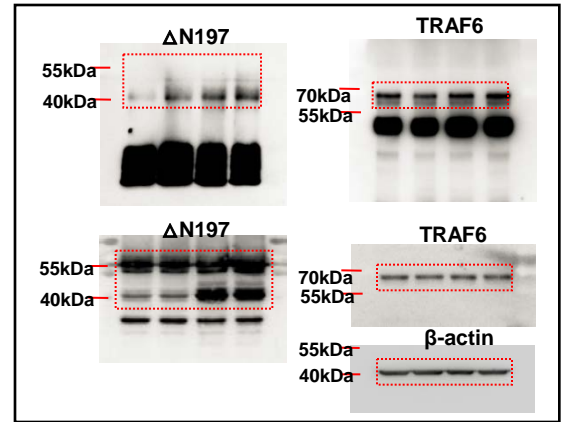
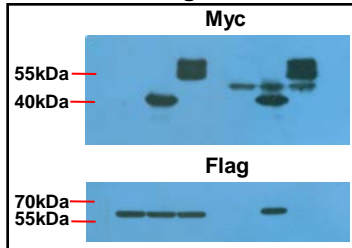
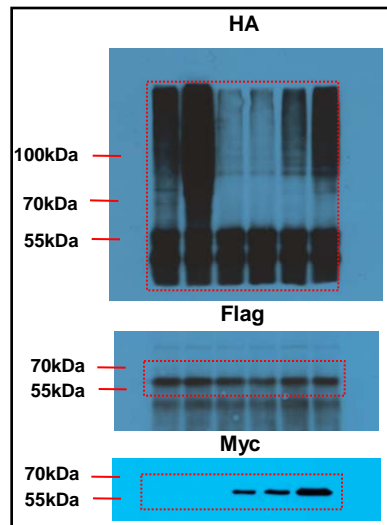
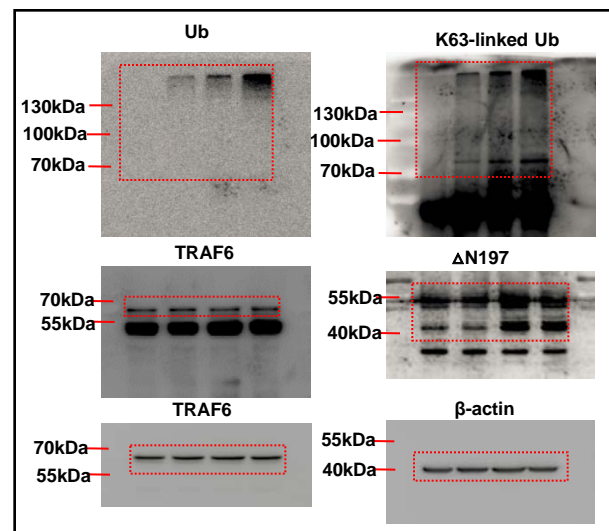
Fig. 4f**Fig. 5c****Fig. 5f****Fig. 5h****Fig. 6a****Fig. 6e****Fig. 6f****Fig. 6h****Fig. 6i**

Fig. 7a

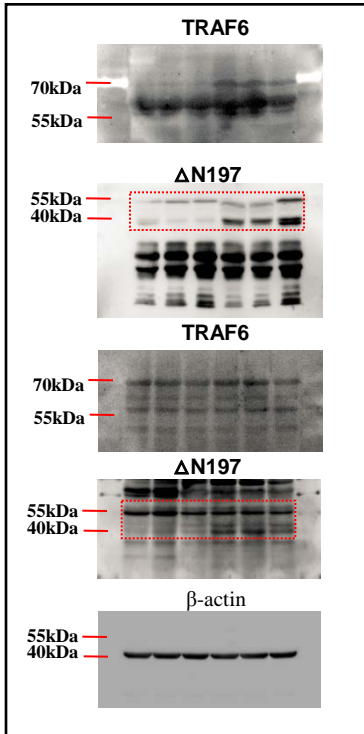


Fig. 7b

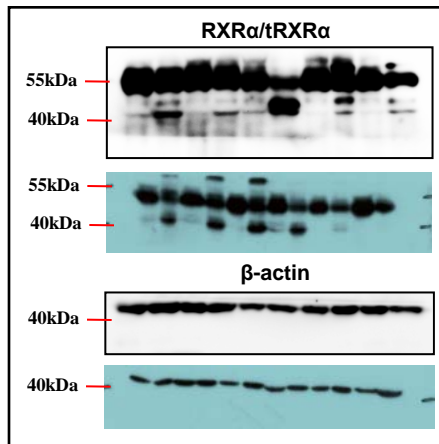


Fig. 7g

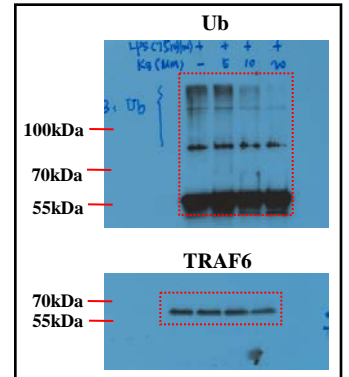


Fig. S1c

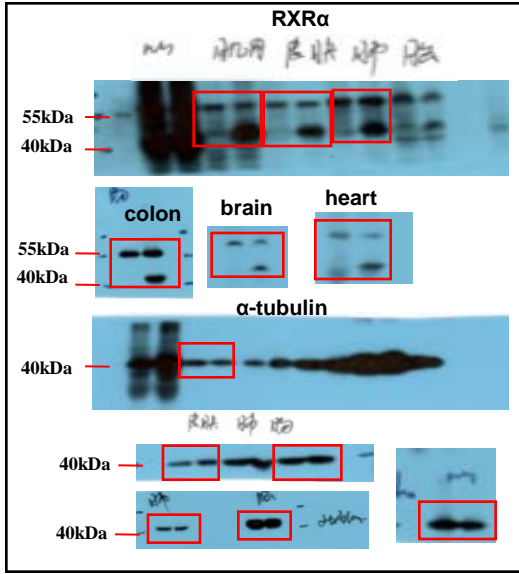


Fig. S4c

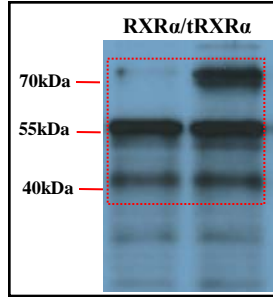


Fig. S4d

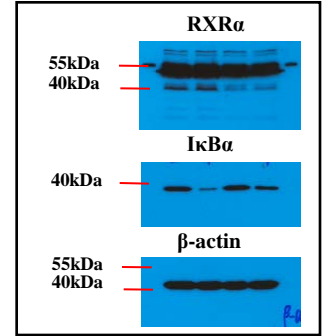


Fig. S5a

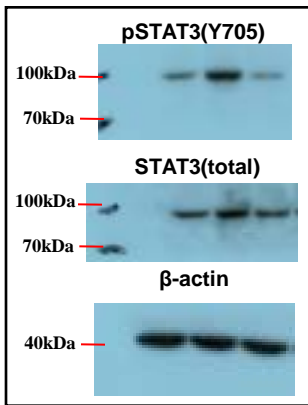


Fig. S5c

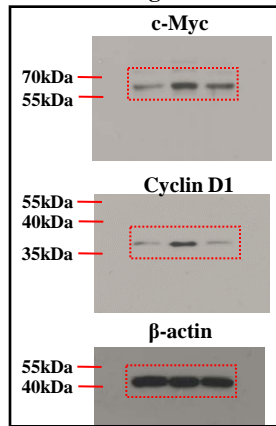


Fig. S6a/RAW264.7

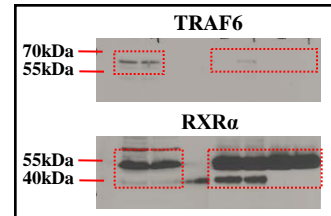


Fig. S6a/THP1

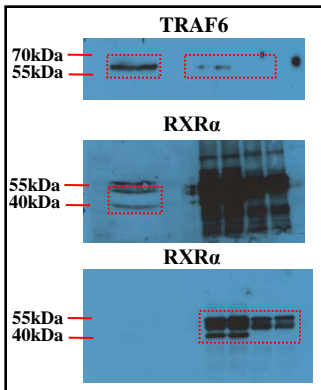


Fig. S6c

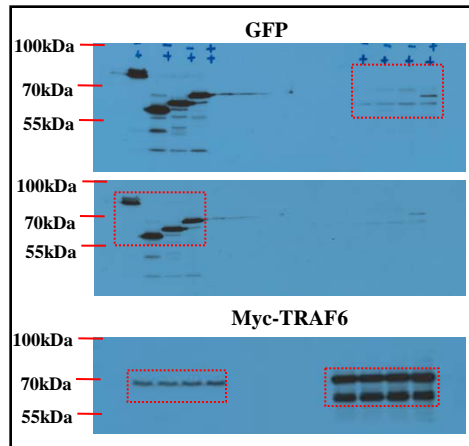


Fig. S6d

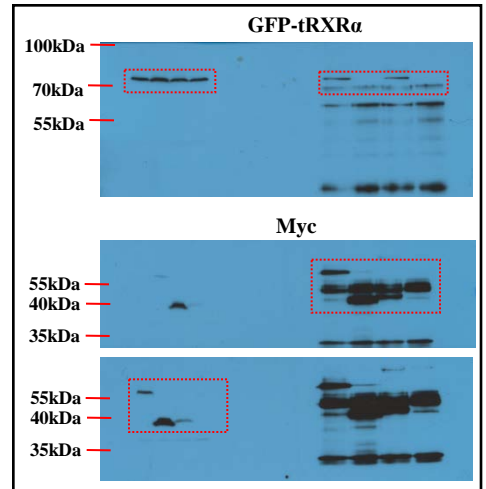


Fig. S6e

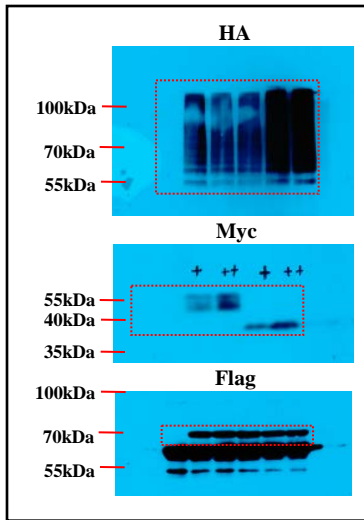


Fig. S6f

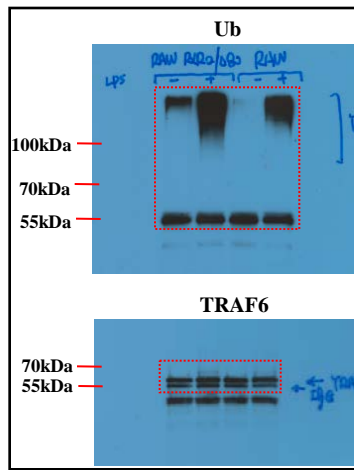


Fig. S7e

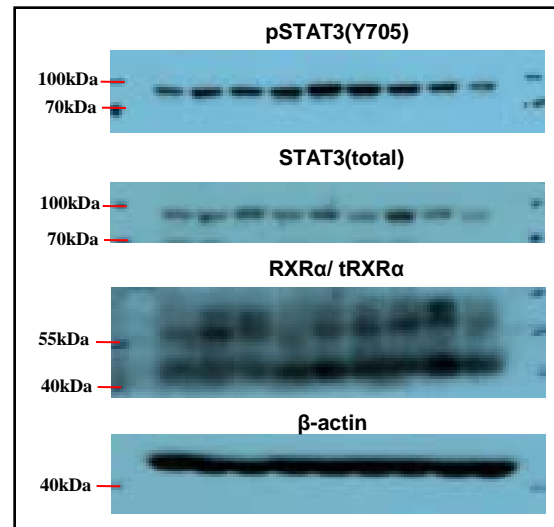


Fig. S7g

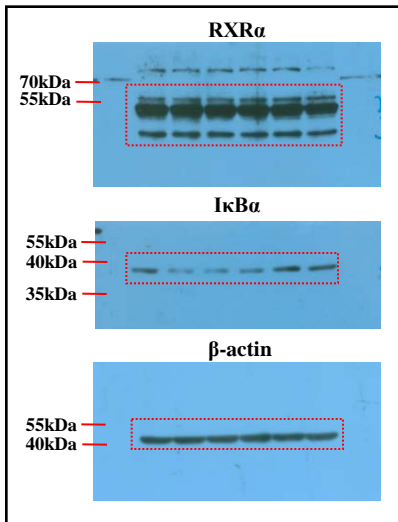


Fig. S7j

