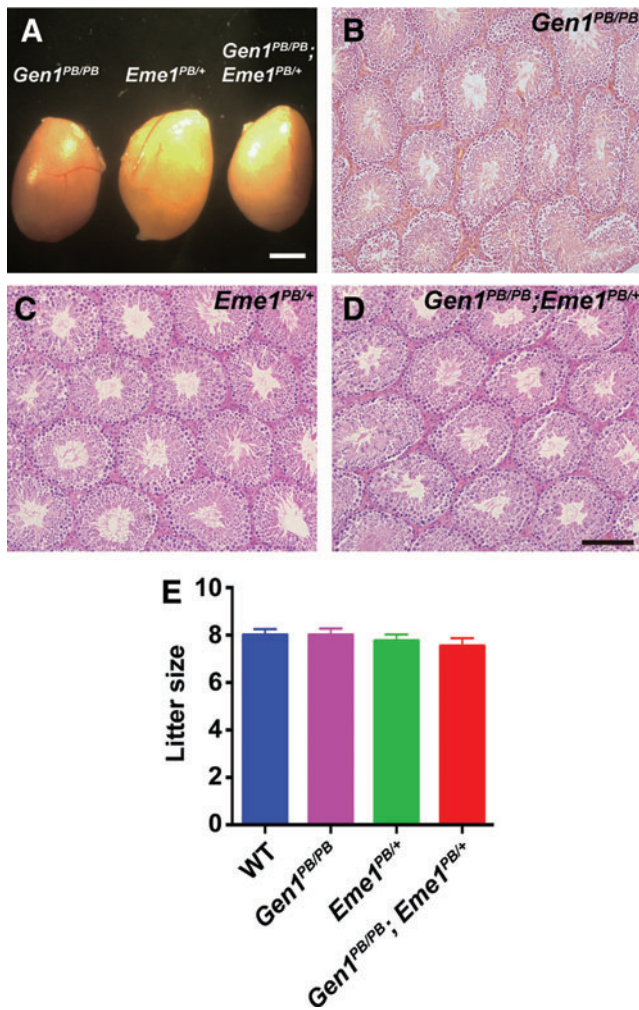


Supplementary Data



SUPPLEMENTARY FIG. 1. Histological analysis of the testis of *Gen1* and *Eme1* mutants. (A) Gross morphology of *Gen1^{PB/PB}*, *Eme1^{PB/+}*, and *Gen1^{PB/PB}; Eme1^{PB/+}* testis. Scale bar, 2 mm. (B–D) H&E-stained paraffin sections of *Gen1^{PB/PB}*, *Eme1^{PB/+}*, and *Gen1^{PB/PB}; Eme1^{PB/+}* testis. Scale bar, 40 μ m. (E) The litter size of mating between male mice of each genotype (WT, *Gen1^{PB/PB}*, *Eme1^{PB/+}*, and *Gen1^{PB/PB}; Eme1^{PB/+}*) and WT FVB/NJ females. PB, *piggyBac*; WT, wild-type.