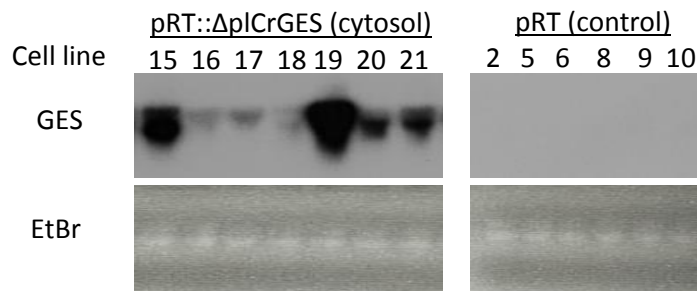
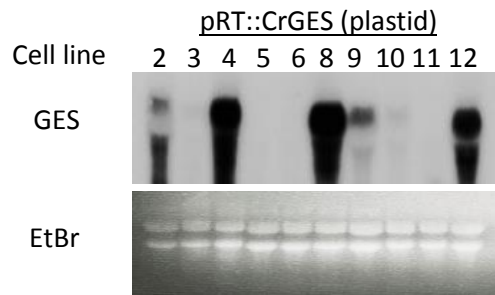
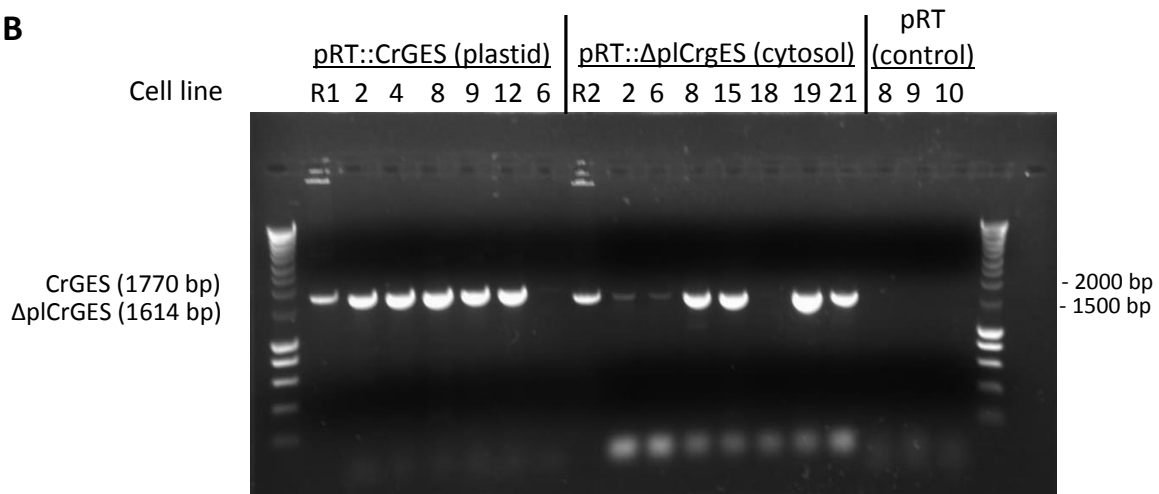


A**B**

Supplement 4 Northern blot (A) and reverse transcriptase PCR (B) analysis of some transgenic *Catharanthus roseus* cell lines overexpressing *CrGES* (plastid) and Δ pl*CrGES* (cytosol). The ethidium bromide stained gel (EtBr) in Northern blot is shown as a control for RNA loading. R1 and R2 is the *CrGES* and Δ pl*CrGES* fragments, respectively, which are used as reference for comparing the sizes of the bands