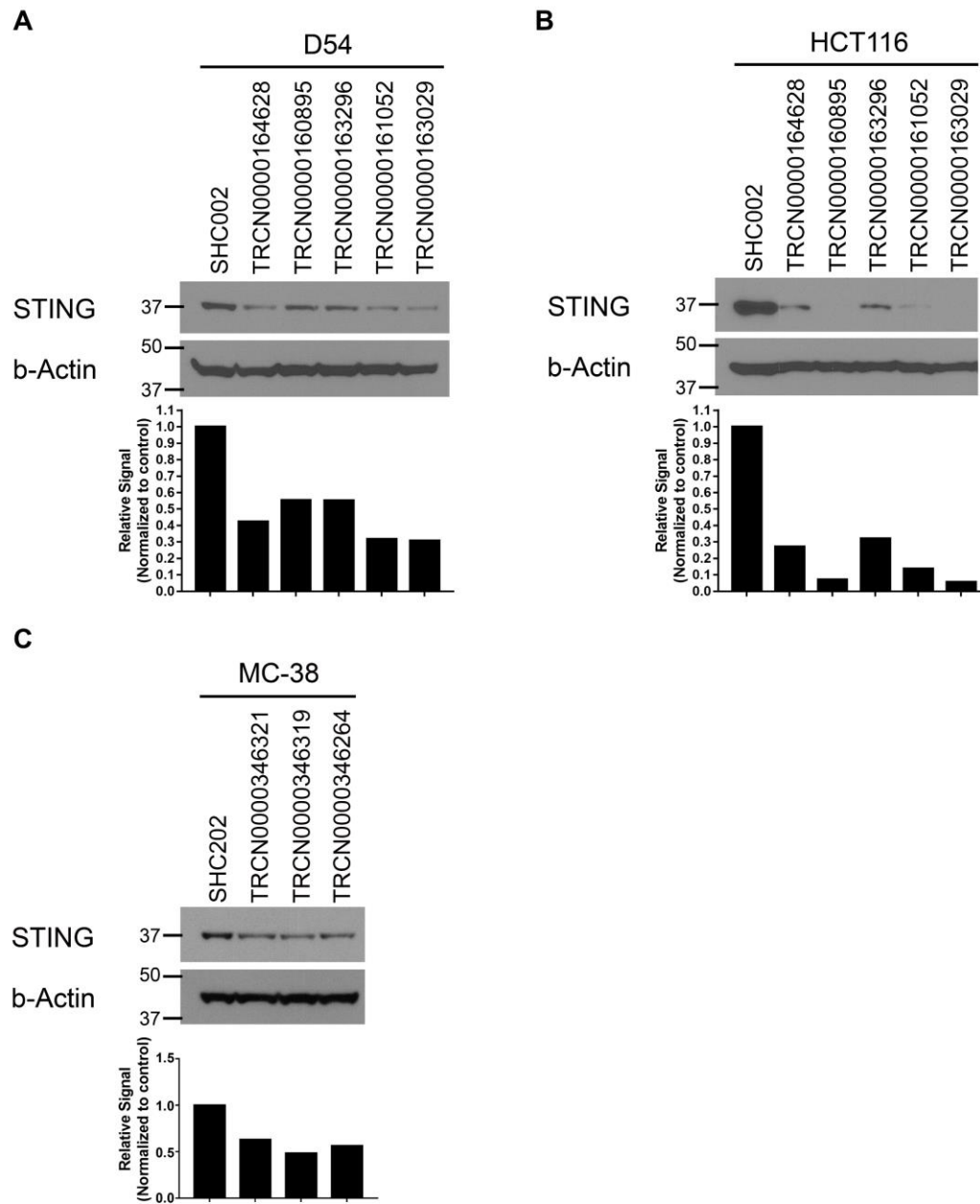


Supplementary Figure S1



Supplementary Figure S1. shRNA constructs targeting STING have varying effects on different tumor cell lines. Western blot analysis of multiple stable D54 (A), HCT116 (B), and MC-38 (C) cell lines expressing short hairpin RNAs targeting STING or scrambled control (SHCOO2). Quantified bands are shown below each of their respective Western blot panels.