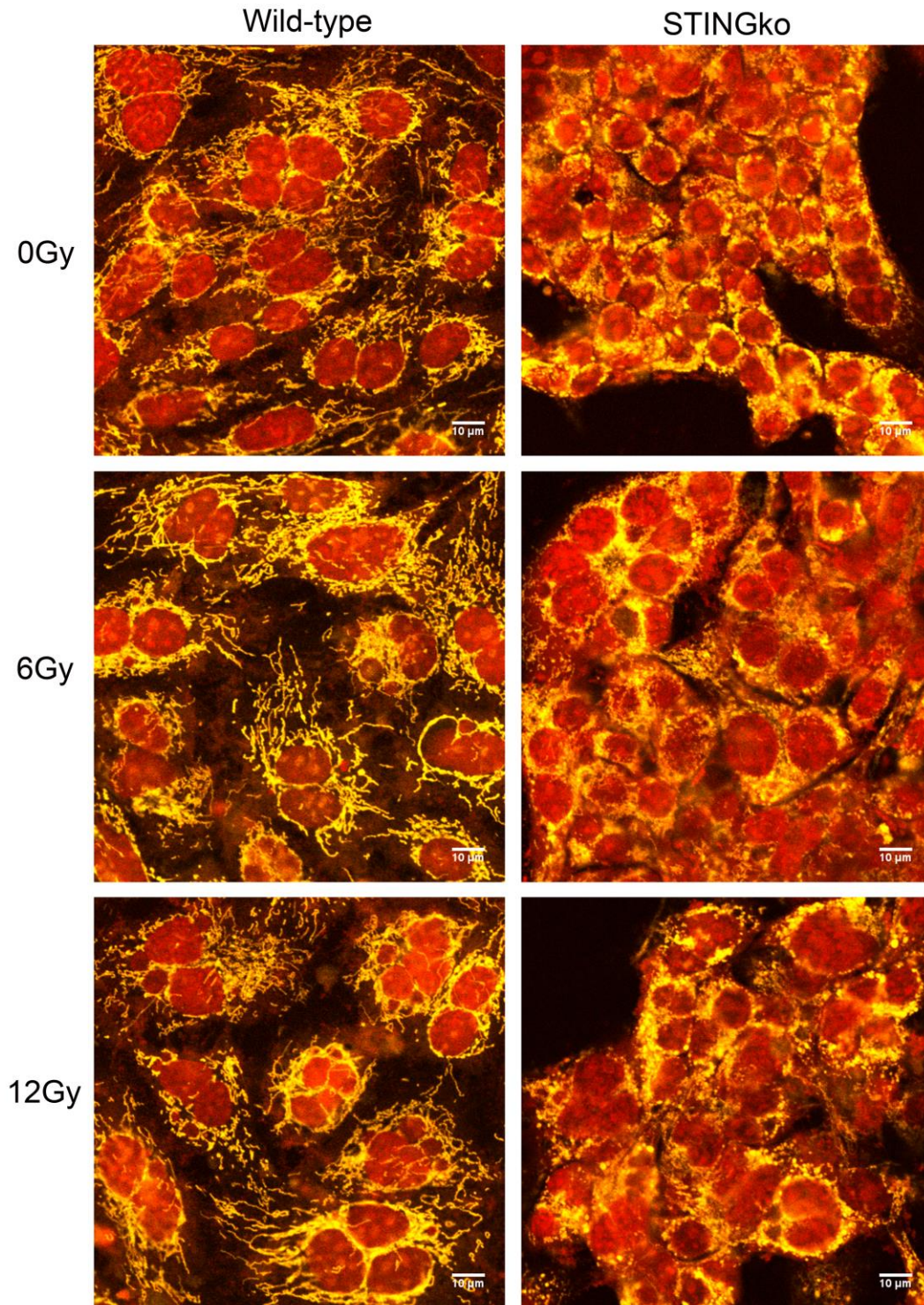


Supplementary Figure S6

Immortalized MEFs
+ 1.5ug/ml Cytochalasin B



Supplementary Figure S6. Ionizing radiation induces micronuclei formation in both WT and STING^{-/-} MEFs. WT and STING^{-/-} MEFs examined by cytokinesis-block micronucleus (CBMN) assay by treatment with IR, then cytochalasin at 24 hours and then fixed and stained for DNA and mitochondrial/cytoplasmic compartments using Draq5 and MitoTracker Red at 48 hours. Scale bar, 10 μ m.