

Table S1. Behavioral differences between speakers identified as having a morphosyntactic production deficit based on picture descriptions (PD-MR) and speakers who did not have such a deficit (PD-Other). Speakers whose output was not classifiable (PD-NC) are excluded from this table.

Variable	PD-MR (n=12) Mean (SD)	PD-Other (n=52) Mean (SD)	<i>p</i>
WAB: AQ (0-100)	59.6 (11.44)	84.88 (18.6)	<.001*
WAB: Fluency (0-10)	4 (1.28)	8.12 (2.31)	<.001*
WAB: Spontaneous speech (0-20)	10.92 (1.98)	16.96 (3.73)	<.001*
WAB: Aud. verb. comp. (0-10)	7.64 (1.58)	9.66 (2.85)	0.021*
WAB: Repetition (0-10)	5.19 (2.46)	8.06 (2.6)	0.001*
WAB: Naming, word finding (0-10)	6.08 (2.1)	8.33 (2.26)	0.003*
ASRS: Aphasia severity	2.58 (1.08)	0.98 (0.99)	<.001*
ASRS: AOS severity	1.64 (1.5)	0.51 (1.14)	0.007*
ASRS: Dysarthria severity	0.25 (0.45)	0.22 (0.64)	0.862
PD: Number of Words	53.44 (24.81)	156.27 (62.91)	<.001*
PD: Errors/Words	0.2362 (0.1596)	0.0475 (0.0785)	<.001*
PD: MA errors/Words	0.0132 (0.0111)	0.0031 (0.0069)	<.001*
PD: MLU in Words	3.76 (1.62)	7.88 (2.27)	<.001*
PD: Type-Token Ratio	0.575 (0.139)	0.536 (0.059)	0.123
PD: Words per minute	28.89 (12.25)	83.9 (32.01)	<.001*
PD: Nouns/Words	0.3034 (0.1073)	0.2298 (0.0503)	0.001*
PD: Verbs/Words	0.1639 (0.0659)	0.1844 (0.046)	0.208
PD: Auxiliaries/Words	0.031 (0.0246)	0.0555 (0.0228)	0.002*
PD: Prepositions/Words	0.0309 (0.0331)	0.0771 (0.0293)	<.001*
PD: Adjectives/Words	0.0255 (0.0166)	0.0305 (0.0152)	0.322
PD: Adverbs/Words	0.0236 (0.0275)	0.055 (0.0291)	0.001*
PD: Conjunctions/Words	0.0046 (0.0105)	0.0142 (0.0127)	0.018*
PD: Determiners/Nouns	0.0882 (0.1218)	0.0869 (0.1421)	0.977
PD: Pronouns/Words	0.0971 (0.0783)	0.1291 (0.055)	0.101
PD: Nouns/Verbs	2.39 (1.76)	1.36 (0.55)	0.001*

Notes: PD-MR = Speech output rated as 'morphosyntactically reduced'; PD-Other = Speech output *not* rated as 'morphosyntactically reduced'; WAB = Western Aphasia Battery, Revised (Kertesz, 2007); AQ = Aphasia Quotient (overall aphasia severity); aud. verb. comp. = auditory verbal comprehension; ASRS = Apraxia of Speech Rating Scale (Strand, E. A., Duffy, J. R., Clark, H. M., & Josephs, K. (2014). The Apraxia of Speech Rating Scale: a tool for diagnosis and description of apraxia of speech. *Journal of Communication Disorders*, 51, 43-50.); PD = measures obtained from the Cookie-Theft picture description task; MA = morphological agreement; MLU = mean length of utterance; \*  $p < .05$

Figure S1

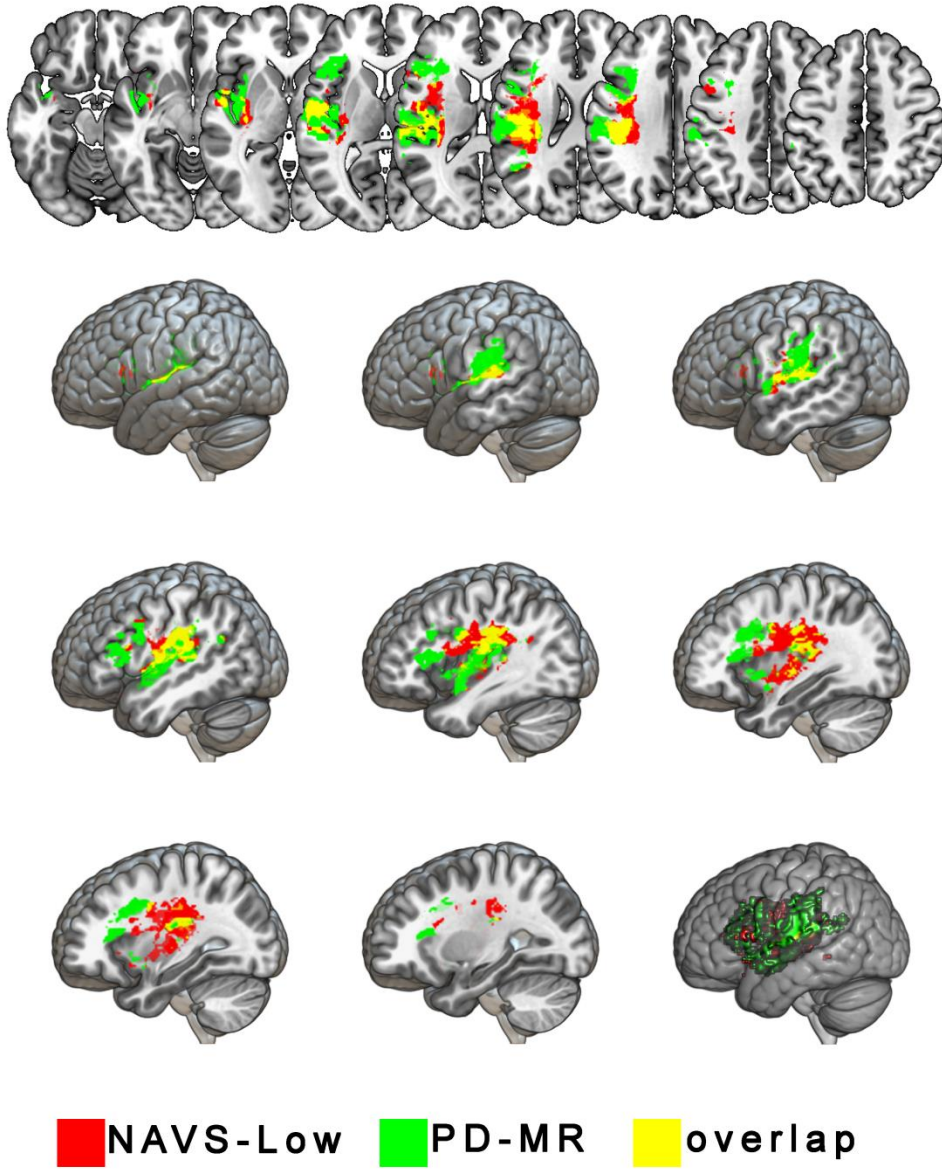


Figure S2

