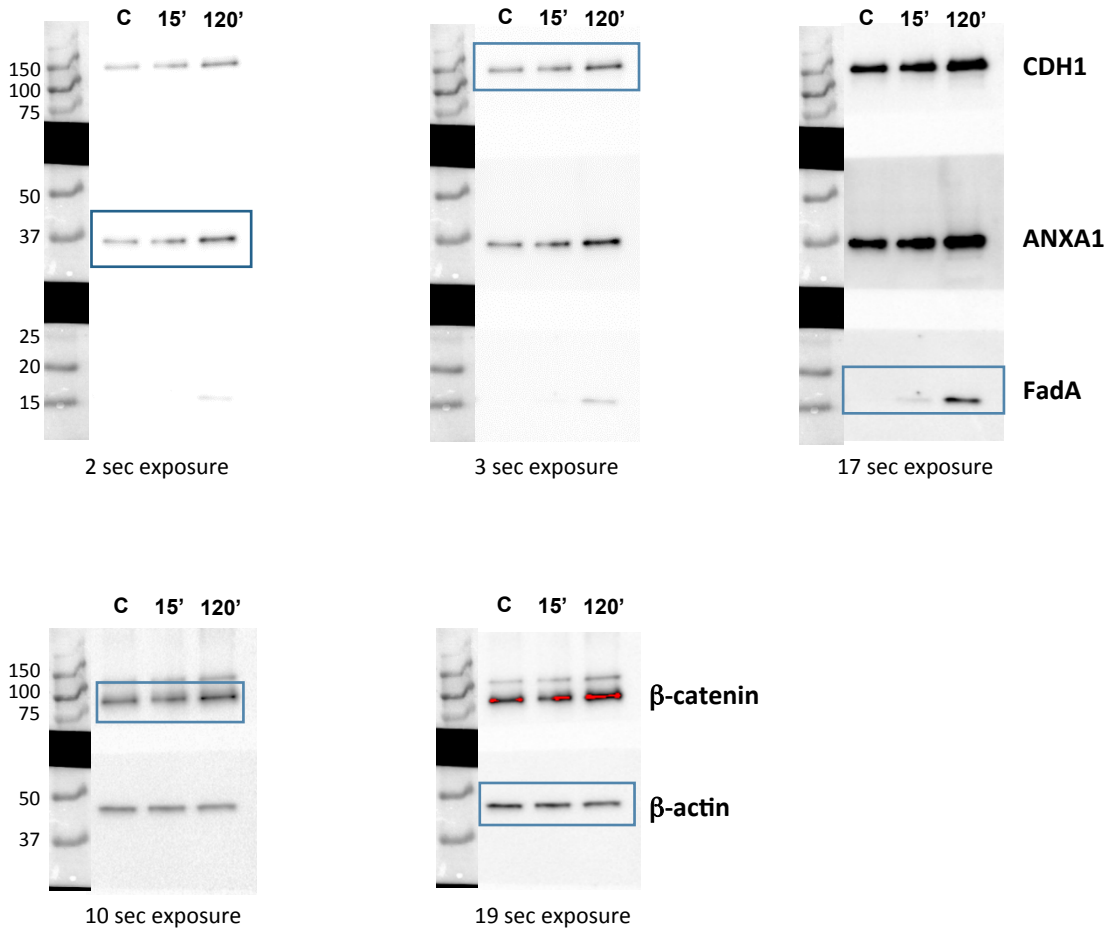
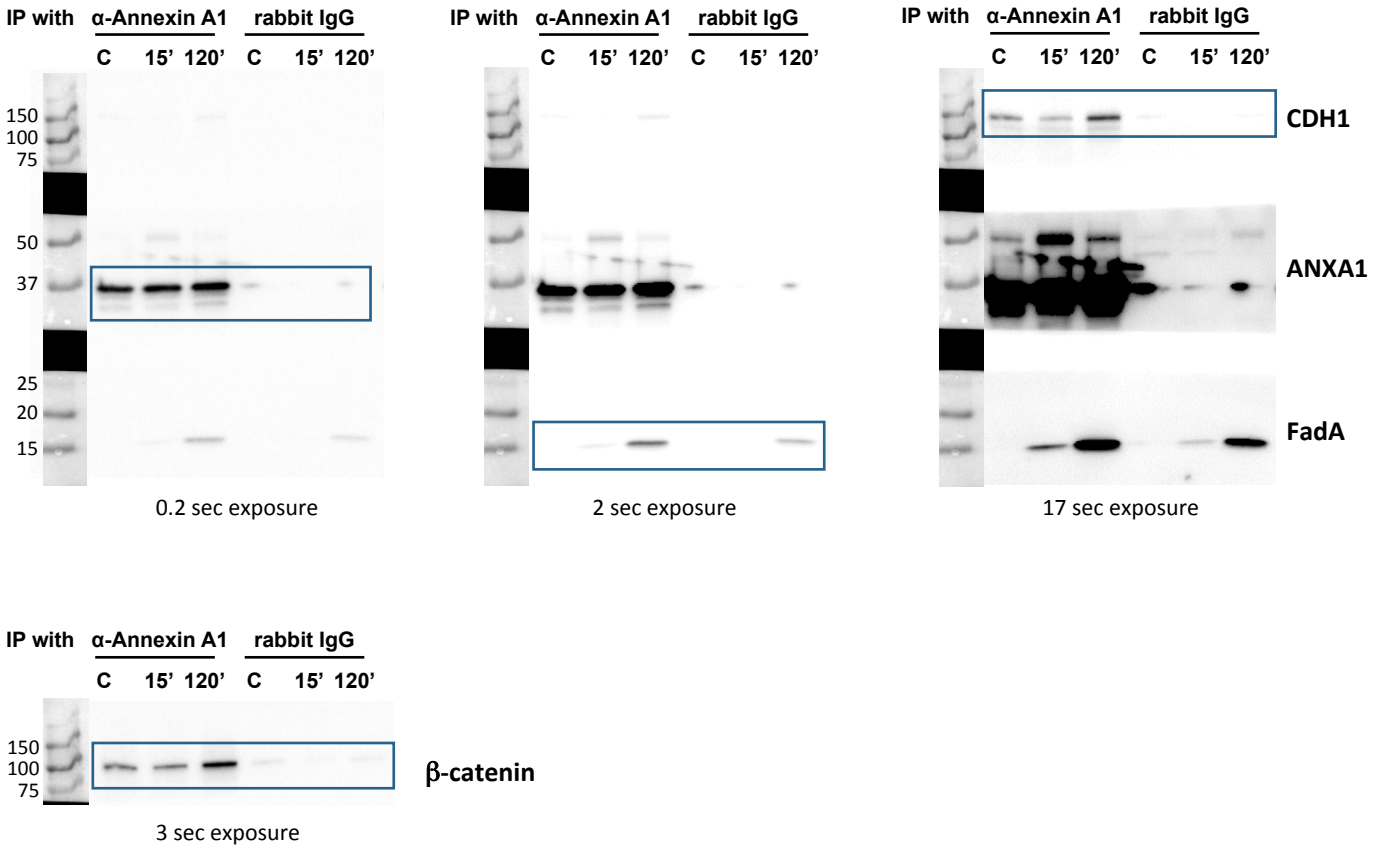


# Figure 5A



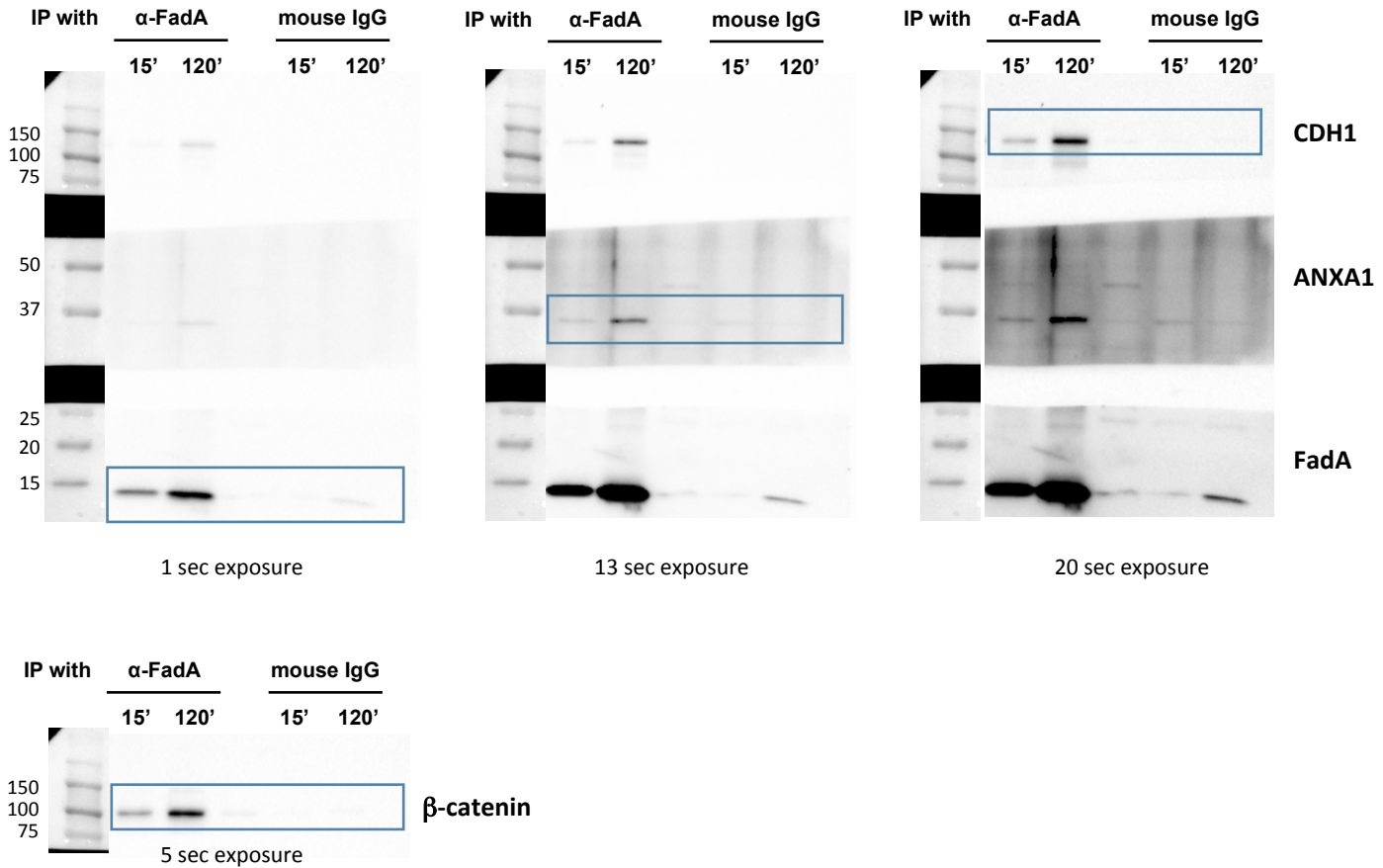
Following transfer, the PVDF membrane was cut into three pieces according to the size markers: bottom (from bottom to 25 kD), middle (25 kD - 50 kD), and top (from 50 kDa to top). Each piece was then incubated with a different antibody (bottom with anti-FadA, middle with anti-ANXA1, top with anti-CDH1), followed by respective secondary antibodies, and developed with a chemiluminescent substrate for different exposure times as indicated on the bottom of each compiled image. The top and middle membranes were then stripped and incubated with anti- $\beta$ -catenin and anti- $\beta$ -actin antibodies, respectively, followed by incubation with secondary antibodies, and developed with a chemiluminescent substrate for different exposure times. The images in the blue boxes are shown in Fig 5A.

# Figure 5B



Following transfer, the PVDF membrane was cut into three pieces according to the size markers: bottom (from bottom to 25 kD), middle (25 kD - 50 kD), and top (from 50 kDa to top). Each piece was then incubated with a different antibody (bottom with anti-FadA, middle with anti-ANXA1, top with anti-CDH1), followed by respective secondary antibodies, and developed with a chemiluminescent substrate for different exposure times as indicated on the bottom of each compiled image. The top membrane was then stripped and incubated with anti- $\beta$ -catenin antibody, followed by secondary antibody, and developed with a chemiluminescent substrate. The images in the blue boxes are shown in Fig 5B.

# Figure 5C



Following transfer, the PVDF membrane was cut into three pieces according to the size markers: bottom (from bottom to 25 kD), middle (25 kD - 50 kD), and top (from 50 kDa to top). Each piece was then incubated with a different antibody (bottom with anti-FadA, middle with anti-ANXA1, top with anti-CDH1), followed by respective secondary antibodies, and developed with a chemiluminescent substrate for different exposure times as indicated on the bottom of each compiled image. The top membrane was then stripped and incubated with anti-β-catenin antibody, followed by incubation with secondary antibody, and developed with a chemiluminescent substrate. The images in the blue boxes are shown in Fig 5C.