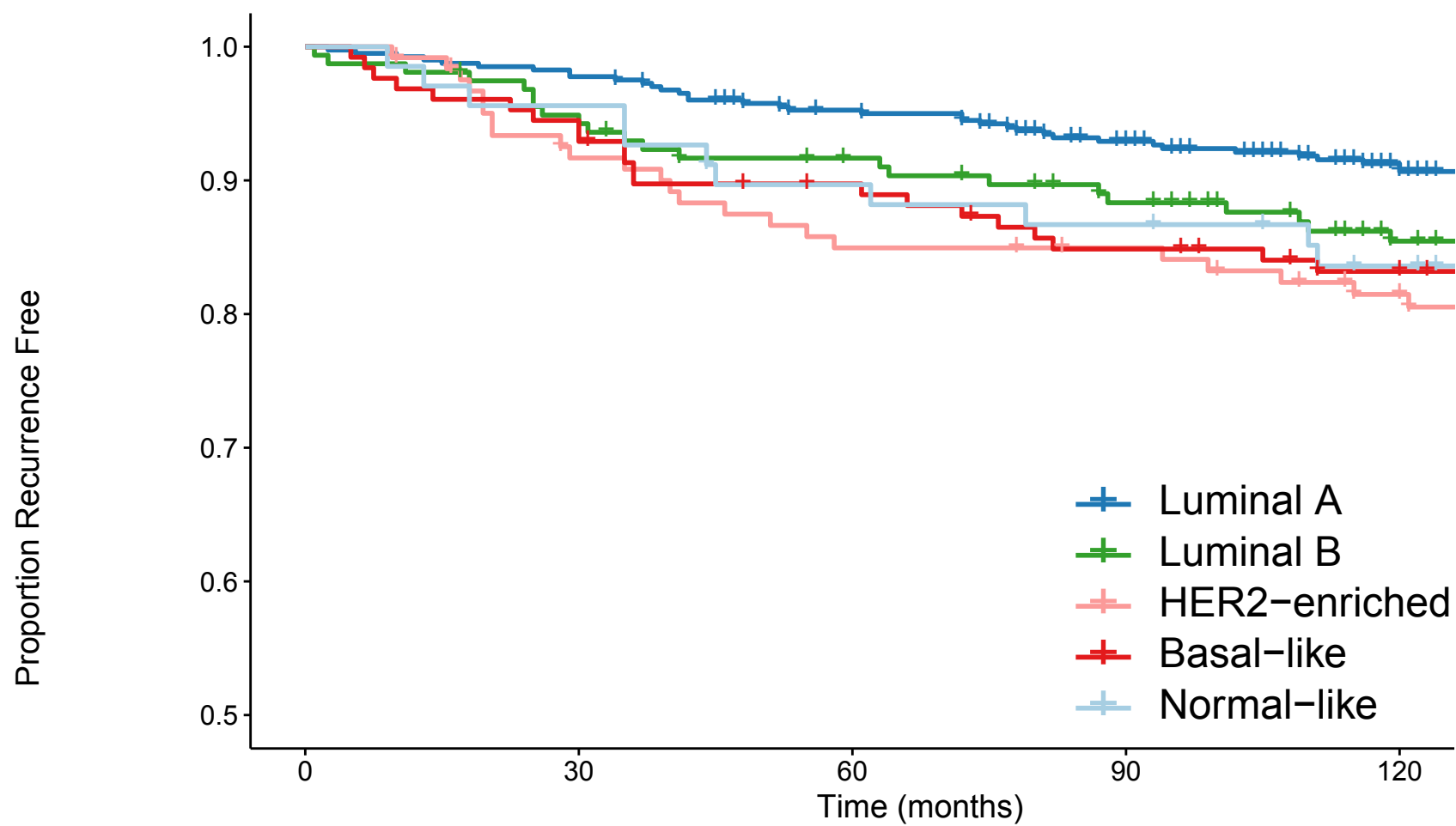


A. RFS and PAM50 (modified median gene centering)

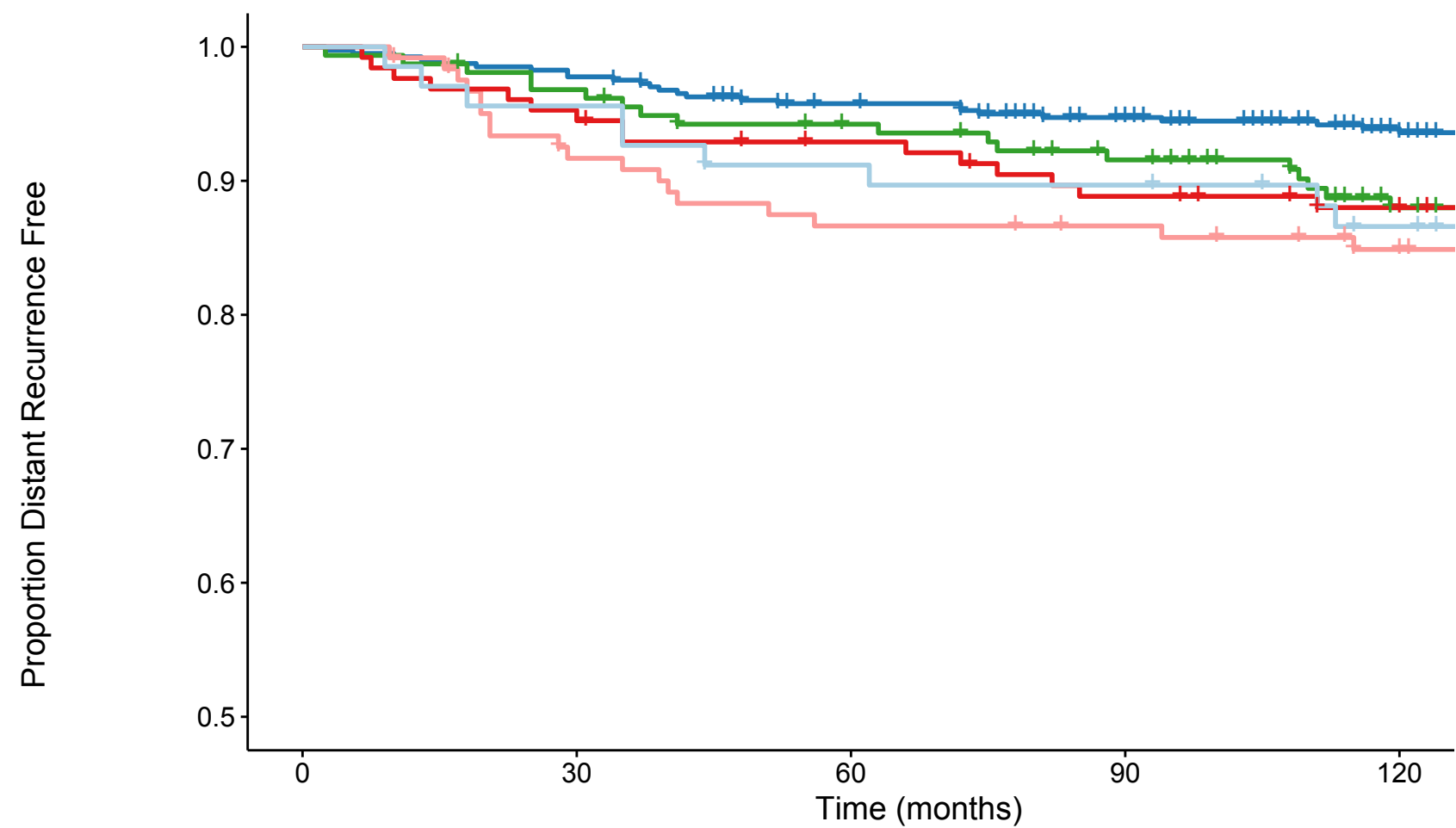


Number at risk

	0	30	60	90	120
Luminal A	402	393	373	347	309
Luminal B	157	148	139	130	114
HER2-enriched	122	109	101	99	87
Basal-like	127	120	111	104	98
Normal-like	68	65	60	58	53

Time (months)

B. DRFS and PAM50 (modified median gene centering)

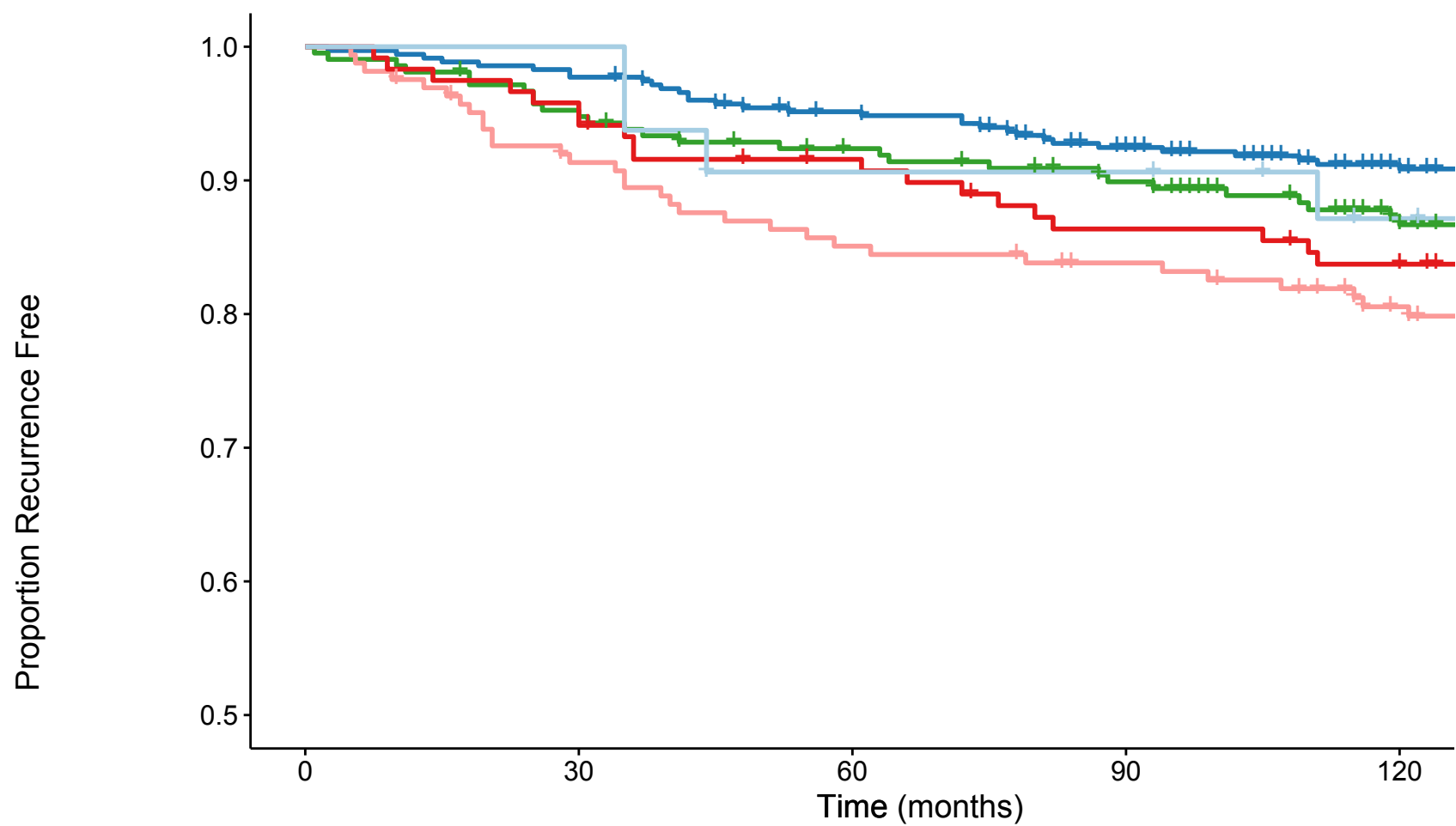


Number at risk

	0	30	60	90	120
Luminal A	402	393	375	354	319
Luminal B	157	151	143	135	118
HER2-enriched	122	109	103	101	91
Basal-like	127	121	115	109	104
Normal-like	68	65	61	60	55

Time (months)

C. RFS and PAM50 (subgroup-specific gene centering)

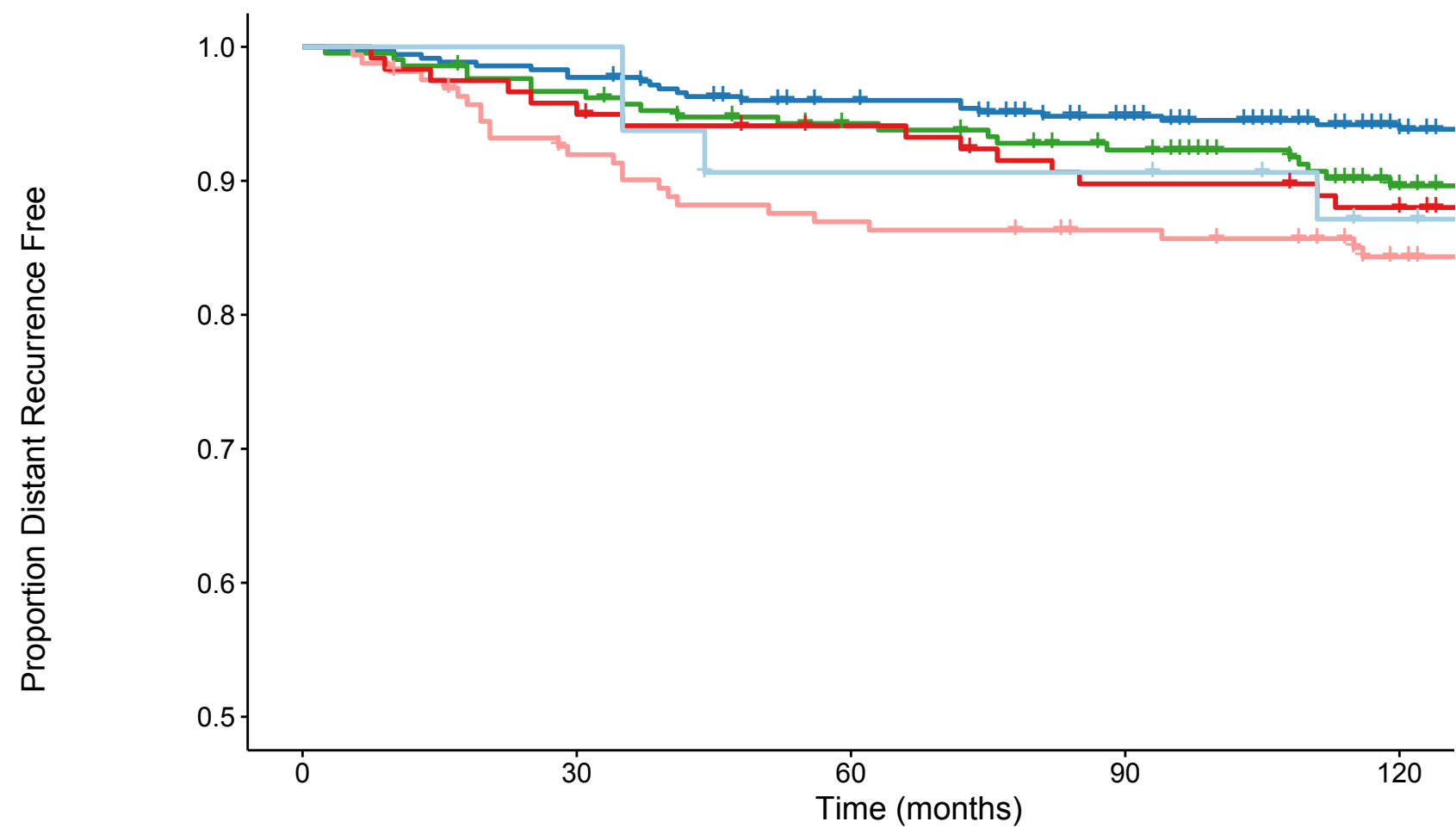


Number at risk

	0	30	60	90	120
Luminal A	351	343	325	302	271
Luminal B	211	200	189	178	156
HER2-enriched	163	146	136	131	115
Basal-like	119	114	106	99	95
Normal-like	32	32	28	28	24

Time (months)

D. DRFS and PAM50 (subgroup-specific gene centering)



Number at risk

	0	30	60	90	120
Luminal A	351	343	328	310	281
Luminal B	211	203	193	183	161
HER2-enriched	163	147	139	135	121
Basal-like	119	114	109	103	100
Normal-like	32	32	28	28	24

Time (months)

Supplementary Figure S3. These Kaplan-Meier curves display the relationships between tumor PAM50 subtypes and recurrence-free survival (RFS) or distant recurrence-free survival (DRFS) in the Nurses' Health Studies. PAM50 subtyping was separately obtained computed using the modified median (**A** and **B**) and subgroup-specific (**C** and **D**) gene centering methods. The blue lines represent Luminal A (tumor); green lines represent Luminal B (tumor); pink lines represent HER2-enriched (tumor); red lines represent Basal-like (tumor); and light blue lines represent Normal-like (tumor).