

## Supplementary Online Content

Mark DB, Anstrom KJ, Sheng S, et al. Effect of catheter ablation vs medical therapy on quality of life among patients with atrial fibrillation: the CABANA randomized clinical trial [published online March 15, 2019]. *JAMA*. doi:10.1001/jama.2019.0692

eFigure 1: Overall CABANA Trial CONSORT Diagram  
eTable 1: Data Collection in the CABANA Trial Quality of Life Study  
eTable 2: AFEQT Component Scores: Symptoms, Daily Activities, and Treatment Concern  
eTable 3: Duke Activity Status Score  
eTable 4: SF-36 Scores  
eTable 5: Toronto Atrial Fibrillation Severity Score (AFSS) Scores  
eTable 6: EQ-5D Scores  
eTable 7: Stanford Presenteeism Scale (SPS-6) Scores  
eTable 8: Work Productivity And Impairment (WPAI) Scores  
eTable 9: AFEQT Scores in the 6-month Per Protocol Analysis  
eTable 10: AFEQT Scores in the 3-month Per Protocol Analysis  
eTable 11: AFEQT Scores in the 12-month Per Protocol Analysis  
eTable 12: MAFSI Scores in the 6-month Per Protocol Analysis  
eTable 13: MAFSI Scores in the 3-month Per Protocol Analysis  
eTable 14: MAFSI Scores in the 12-month Per Protocol Analysis  
eTable 15: AFEQT Scores with Adjustment for Site and the Site-Treatment Interaction as Random Effects  
eFigure 2: AFEQT Summary Scores in Pre-Specified Subgroups by Intention-to-Treat  
eFigure 3: MAFSI Frequency Scores in Pre-Specified Subgroups by Intention-to-Treat  
eFigure 4: AFEQT Summary Scores in the 6-Month Per Protocol Analysis  
eFigure 5: MAFSI Frequency Scores in the 6-Month Per Protocol Analysis  
eFigure 6: AFEQT Scores by Baseline Tertiles by Intention-to-Treat  
eFigure 7: MAFSI Scores by Baseline Tertiles by Intention-to-Treat  
eFigure 8: AFEQT Summary Scores Illustrative Changes  
eFigure 9: AFEQT Summary Score Responder Analysis  
eFigure 10: MAFSI Frequency Score Responder Analysis  
Supplement References

This supplementary material has been provided by the authors to give readers additional information about their work.

## SUPPLEMENTAL MATERIAL

Effect of Catheter Ablation vs Medical Therapy on Quality of Life Among Patients with Atrial Fibrillation: the CABANA Randomized Clinical Trial

Daniel B. Mark, MD, MPH\*; Kevin J. Anstrom, PhD\*; Shubin Sheng, PhD\*; Jonathan P. Piccini, MD, MHS\*; Khaula N. Baloch, MPH\*; Kristi H. Monahan RN¶; Melanie R. Daniels, BA\*; Tristram D. Bahnson, MD\*; Jeanne E. Poole, MD§; Yves Rosenberg, MD, MPH†; Kerry L. Lee, PhD\*; Douglas L. Packer, MD¶ on behalf of the CABANA Investigators

ClinicalTrials.gov Identifier: NCT00911508

\* Duke Clinical Research Institute, Duke University, Durham, NC

§ University of Washington Medical Center, Seattle, WA

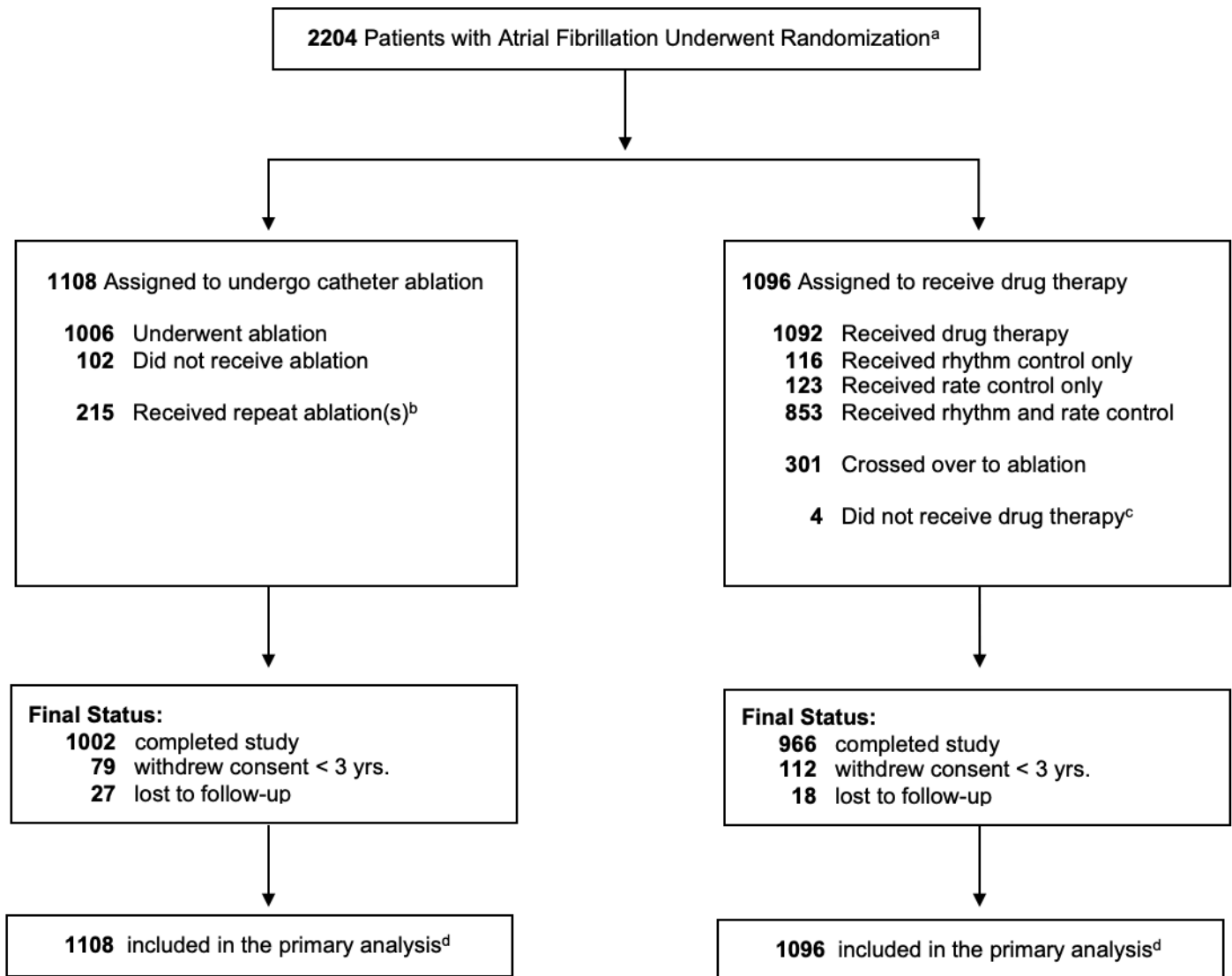
† National Heart, Lung, and Blood Institute, National Institutes of Health, Bethesda, MD

¶ Mayo Clinic, Rochester, MN

Supported by grants U01HL89709, U01HL089786, U01HL089907 and U01HL089645 from the National Heart, Lung, and Blood Institute; St Jude Foundation and Corporation; Biosense Webster Inc; Medtronic Corporation; and Boston Scientific Corporation. The content is solely the responsibility of the authors and does not necessarily represent the official views of the National Heart, Lung, and Blood Institute; the National Institutes of Health; or the US Department of Health and Human Services.

Address for Correspondence: Daniel B. Mark, MD, MPH  
Director, Outcomes Research  
Duke Clinical Research Institute  
P.O. Box 17969  
Durham, NC 27715  
2400 Pratt Street, Room 0311  
Durham, NC 27705  
daniel.mark@duke.edu  
919-668-8775 (Phone)  
919-668-7060 (Fax)

eFigure 1: CABANA Trial CONSORT Diagram



- Sites were not required to provide screening logs during the recruitment phase.
- Twenty-five patients underwent repeat ablation during the blanking period; 190 patients had at least one repeat ablation during the post-blanking period for a total of 215.
- Three patients withdrew consent following randomization assignment. One investigator decided to not start drug.
- Outcomes of patients who did not complete the study (i.e., withdrew consent or were lost to follow-up) were included to the point of consent withdrawal or final contact. Primary and key secondary endpoints were analyzed using time-to-event methodology, thus all available follow-up information was utilized. For patients who did not complete the study and did not experience an outcome event, their time-to-event measure was censored at the last contact date. There was no imputation of outcome events. At the end of the trial, a publically available death registry search was performed for patients enrolled in North America who were lost or withdrew from the trial.

## **Secondary Quality of Life Instruments Used in the CABANA Trial**

The Duke Activity Status Index (DASI)<sup>1</sup> is a 12-item questionnaire used to assess general physical functioning; activities range in physical demands from self-care to strenuous sports. The possible responses to each item are 1 = “Yes, with no difficulty,” 2 = “Yes, but with some difficulty or I couldn’t do this,” and 3 = “Don’t do this for other reasons.” The total score ranges from 0 to 58.2, with lower scores indicating worse physical functioning. A clinically meaningful change in the DASI is 4 points or more.<sup>2</sup>

The Atrial Fibrillation Severity Scale<sup>3</sup> (AFSS) is a 19-item disease-specific questionnaire used to assess AF-related symptoms. For CABANA, we collected the four questions that comprise the Total AF Burden score reflecting frequency, duration, and severity of AF episodes. Total AF Burden scores range from 3 to 30 with higher scores indicating higher burden of disease. One difficulty with the Total AF Burden score is an option to respond, “Not applicable, I have never had an irregular heart rhythm,” which is incompatible with a population already diagnosed with an irregular heart rhythm. This question confused a large portion of our study participants and we modified the scale as a result. In scoring, we imputed the value of this question to be the same as the least burdensome category. We also collected the two questions that comprise the AF Severity score, which asks about the severity of the last AF episode and the first AF episode, with responses scored from 1 to 10 with 1 being severe and 10 being the extremely severe. The score is the arithmetic mean of responses to the two questions. Because the original questionnaire only allowed for patients to score their episodes as “severe” to “extremely severe,” we modified our scale for the AF Severity score such that a score of 1 = “not severe at all” and 10 = “extremely severe.” A clinically meaningful change is 3 points or more.<sup>4</sup>

The SF-36<sup>5</sup> is a 36-item questionnaire used to provide a detailed assessment of functioning and well-being from a generic health status perspective. The instrument provides a Global Health Utility and 8 subscales. The SF-36 asks patients to recall health status “during the past 4 weeks.” Scores range from 0 to 100 with higher scores representing better health status. A clinically meaningful change for a patient using this scoring system has not been established but can be approximated by a ¼ standard deviation, or 5 points or more.

The EQ-5D-3L<sup>6</sup> Health Utility Index is a 5-item questionnaire that measures health status on 5 dimensions: mobility, self-care, usual activities, pain/discomfort, and anxiety/depression. The EQ-5D Visual Analog Scale (VAS) is a vertical, visual analogue scale where the ends are labeled “best imaginable health state” and “worst imaginable health state.” A clinically meaningful change has not been established in the context of atrial fibrillation.

## **Work and Productivity Measures Used in the CABANA Trial**

The 6-item Stanford Presenteeism Scale (SPS) assesses whether or not patients felt they experienced a decrease in their work productivity or below-normal work quality because of their chest pain or symptoms of

coronary artery disease.<sup>7</sup> The Stanford Presenteeism Scale is a generic instrument that uses a 5-point Likert scale ranging from “Strongly Agree” to “Strongly Disagree” to rate six job performance measures over the past month. The responses are then summed to produce a Total Score that ranges from 6 to 30, with higher scores indicating increased work productivity.

The Work Productivity and Impairment Questionnaire (WPAI)<sup>8</sup> is a 6-item questionnaire that assesses the amount of absenteeism, presenteeism, and daily activity impairment attributable to health. WPAI General Health outcomes are expressed as impairment percentages, with higher numbers indicating greater impairment and less productivity, i.e., worse outcomes.

**eTable 1: Data Collection in the CABANA Trial Quality of Life Study**

		Ablation (N=1108)		Drug Therapy (N=1096)	
		N	%	N	%
Baseline	Collected	1098	99.10	1090	99.45
	Not Collected	10	0.90	6	0.55
3 Month	Collected	1019	91.97	1013	92.43
	Died	1	0.09	2	0.18
	Withdrew	27	2.44	22	2.01
	Not Collected	61	5.51	59	5.38
6 Month	Collected	998	90.07	995	90.78
	Died	1	0.09	8	0.73
	Withdrew	40	3.61	37	3.38
	Not Collected	69	6.23	56	5.11
12 Month	Collected	955	86.19	943	86.04
	Died	7	0.63	15	1.37
	Withdrew	56	5.05	52	4.74
	Not Collected	90	8.12	86	7.85
18 Month	Collected	929	83.84	882	80.47
	Died	9	0.81	23	2.10
	Withdrew	66	5.96	72	6.57
	Not Collected	104	9.39	119	10.86
24 Month	Collected	905	81.68	847	77.28
	Died	18	1.62	32	2.92
	Withdrew	69	6.23	90	8.21
	End of Study	20	1.81	19	1.73
	Not Collected	96	8.66	108	9.85
30 Month	Collected	802	72.38	753	68.70
	Died	22	1.99	36	3.28
	Withdrew	70	6.32	103	9.40
	End of Study	100	9.03	91	8.30
	Not Collected	114	10.29	113	10.31
36 Month	Collected	691	62.36	653	59.58
	Died	33	2.98	40	3.65
	Withdrew	74	6.68	111	10.13
	End of Study	207	18.68	188	17.15
	Not Collected	103	9.30	104	9.49
42 Month	Collected	620	55.96	583	53.19
	Died	38	3.43	42	3.83

		Ablation (N=1108)		Drug Therapy (N=1096)	
	Withdrew	78	7.04	116	10.58
	End of Study	268	24.19	259	23.63
	Not Collected	104	9.39	96	8.76
48 Month					
	Collected	534	48.49	510	46.53
	Died	39	3.52	44	4.01
	Withdrew	82	7.40	123	11.22
	End of Study	349	31.50	328	29.93
	Not Collected	104	9.39	91	8.30
54 Month					
	Collected	450	40.61	439	40.05
	Died	46	4.15	50	4.56
	Withdrew	88	7.94	130	11.86
	End of Study	427	38.54	396	36.13
	Not Collected	97	8.75	81	7.39
60 Month					
	Collected	373	33.66	354	32.30
	Died	52	4.69	55	5.02
	Withdrew	97	8.75	135	12.32
	End of Study	497	44.86	471	42.97
	Not Collected	89	8.03	81	7.39

Shaded rows represent brief questionnaire intervals.

**eTable 2: AFEQT Symptoms, Daily Activities, and Treatment Concern Scores in the CABANA Trial**

	<b>Catheter Ablation N=1108</b>	<b>Drug Therapy N=1096</b>	<b>Adjusted Difference Between Ablation and Drug Therapy (95% CI)</b>
<b>AFEQT</b>			
<b>Symptoms Score</b>			
Scale: 0 = extremely limiting, 100 = no limitations			
Baseline			
Number of patients contributing	1072	1070	
Median (25th, 75th percentile)	75 (58, 89)	75 (58, 92)	
Mean (standard deviation)	71.7 (22.0)	71.8 (22.9)	-0.1 (-2.0 to 1.8)
3 month			
Number of patients contributing	966	979	
Median (25th, 75th percentile)	92 (79, 100)	88 (71, 100)	
Mean (standard deviation)	86.5 (17.2)	83.1 (19.3)	3.4 (1.8 to 5.0)
12 month			
Number of patients contributing	907	900	
Median (25th, 75th percentile)	100 (88, 100)	92 (75, 100)	
Mean (standard deviation)	91.5 (14.8)	86.1 (17.5)	5.2 (3.8 to 6.7)
24 month			
Number of patients contributing	839	774	
Median (25th, 75th percentile)	100 (88, 100)	100 (79, 100)	
Mean (standard deviation)	91.8 (15.4)	88.5 (17.1)	2.9 (1.3 to 4.4)
36 month			
Number of patients contributing	622	583	
Median (25th, 75th percentile)	100 (92, 100)	100 (83, 100)	
Mean (standard deviation)	92.3 (14.1)	89.2 (16.9)	3.1 (1.4 to 4.7)
48 month			
Number of patients contributing	477	466	



	<b>Catheter Ablation N=1108</b>	<b>Drug Therapy N=1096</b>	<b>Adjusted Difference Between Ablation and Drug Therapy (95% CI)</b>
Median (25th, 75th percentile)	100 (88, 100)	100 (83, 100)	
Mean (standard deviation)	91.6 (15.6)	89.9 (16.6)	1.7 (-0.3 to 3.6)
<b>60 month</b>			
Number of patients contributing	327	319	
Median (25th, 75th percentile)	100 (92, 100)	100 (83, 100)	
Mean (standard deviation)	92.0 (16.1)	89.6 (17.2)	1.8 (-0.5 to 4.1)
<b>All follow-up</b>			
Total questionnaires collected	4138	4021	
Median (25th, 75th percentile)	100 (88, 100)	96 (79, 100)	
Mean (standard deviation)	90.6 (15.8)	87.0 (17.8)	3.0 (1.9 to 4.1)
<b>Daily Activities</b>			
Scale: 0 = extremely limited, 100 = no limitations			
<b>Baseline</b>			
Number of patients contributing	1083	1076	
Median (25th, 75th percentile)	56 (35, 77)	54 (33, 77)	
Mean (standard deviation)	56.4 (26.8)	55.6 (27.0)	0.7 (-1.5 to 3.0)
<b>3 month</b>			
Number of patients contributing	961	974	
Median (25th, 75th percentile)	83 (62, 100)	77 (50, 98)	
Mean (standard deviation)	76.0 (24.6)	71.5 (26.9)	4.2 (2.0 to 6.5)
<b>12 month</b>			
Number of patients contributing	906	894	
Median (25th, 75th percentile)	94 (71, 100)	83 (58, 100)	
Mean (standard deviation)	82.8 (22.3)	76.2 (24.7)	6.2 (4.0 to 8.3)
<b>24 month</b>			
Number of patients contributing	842	791	
Median (25th, 75th percentile)	92 (71, 100)	85 (58, 100)	
Mean (standard deviation)	82.3 (22.2)	76.0 (26.0)	5.5 (3.3 to 7.7)

	<b>Catheter Ablation N=1108</b>	<b>Drug Therapy N=1096</b>	<b>Adjusted Difference Between Ablation and Drug Therapy (95% CI)</b>
<b>36 month</b>			
Number of patients contributing	640	599	
Median (25th, 75th percentile)	92 (67, 100)	87 (63, 100)	
Mean (standard deviation)	81.2 (22.8)	78.5 (23.7)	2.7 (0.4 to 5.1)
<b>48 month</b>			
Number of patients contributing	476	467	
Median (25th, 75th percentile)	90 (67, 100)	83 (60, 100)	
Mean (standard deviation)	81.0 (22.1)	77.2 (24.5)	3.9 (1.3 to 6.6)
<b>60 month</b>			
Number of patients contributing	326	317	
Median (25th, 75th percentile)	89 (69, 100)	88 (60, 100)	
Mean (standard deviation)	80.8 (22.5)	77.8 (25.1)	2.2 (-1.0 to 5.4)
<b>All follow-up</b>			
Total questionnaires collected	4151	4042	
Median (25th, 75th percentile)	90 (67, 100)	83 (58, 100)	
Mean (standard deviation)	80.5 (23.1)	75.6 (25.5)	4.1 (2.4 to 5.9)

### **Treatment Concern**

Scale: 0 = extremely limiting, 100 = no limitations

#### **Baseline**

Number of patients contributing	1081	1076	
Median (25th, 75th percentile)	69 (50, 83)	69 (53, 86)	
Mean (standard deviation)	65.6 (23.2)	67.1 (22.9)	-1.5 (-3.4 to 0.4)
<b>3 month</b>			
Number of patients contributing	965	977	
Median (25th, 75th percentile)	83 (69, 97)	83 (67, 97)	
Mean (standard deviation)	80.1 (19.5)	78.6 (21.1)	1.2 (-0.5 to 3.0)
<b>12 month</b>			

	<b>Catheter Ablation N=1108</b>	<b>Drug Therapy N=1096</b>	<b>Adjusted Difference Between Ablation and Drug Therapy (95% CI)</b>
Number of patients contributing	910	895	
Median (25th, 75th percentile)	94 (83, 100)	89 (75, 100)	
Mean (standard deviation)	87.8 (16.6)	83.5 (19.1)	4.3 (2.7 to 5.9)
<b>24 month</b>			
Number of patients contributing	852	792	
Median (25th, 75th percentile)	94 (83, 100)	92 (78, 100)	
Mean (standard deviation)	88.9 (15.3)	85.1 (18.7)	3.4 (1.8 to 5.0)
<b>36 month</b>			
Number of patients contributing	641	600	
Median (25th, 75th percentile)	94 (83, 100)	94 (81, 100)	
Mean (standard deviation)	88.7 (15.4)	87.2 (17.0)	2.0 (0.3 to 3.7)
<b>48 month</b>			
Number of patients contributing	471	468	
Median (25th, 75th percentile)	97 (83, 100)	94 (81, 100)	
Mean (standard deviation)	89.6 (15.4)	87.4 (17.0)	2.3 (0.4 to 4.2)
<b>60 month</b>			
Number of patients contributing	325	314	
Median (25th, 75th percentile)	97 (83, 100)	94 (81, 100)	
Mean (standard deviation)	89.8 (15.3)	86.4 (19.5)	3.1 (0.8 to 5.5)
<b>All follow-up</b>			
Total questionnaires collected	4164	4046	
Median (25th, 75th percentile)	94 (78, 100)	92 (75, 100)	
Mean (standard deviation)	86.8 (17.1)	83.9 (19.3)	2.7 (1.5 to 4.0)

**eTable 3: Duke Activity Status Scores in the CABANA Trial**

	Catheter Ablation N=1108	Drug Therapy N=1096	Adjusted Difference Between Ablation and Drug Therapy (95% CI)
<b>Duke Activity Status Index (DASI)</b>			
Scale: 0 = worst physical functioning, 58.2 = best physical functioning			
Baseline			
Number of patients contributing	1087	1081	
Median (25th, 75th percentile)	23 (13, 38)	23 (11, 42)	
Mean (standard deviation)	26.1 (16.9)	26.2 (17.5)	-0.1 (-1.6 to 1.3)
3 month			
Number of patients contributing	974	989	
Median (25th, 75th percentile)	25 (13, 40)	23 (13, 39)	
Mean (standard deviation)	27.7 (16.2)	26.6 (16.8)	1.0 (-0.4 to 2.5)
12 month			
Number of patients contributing	925	911	
Median (25th, 75th percentile)	29 (15, 43)	24 (13, 43)	
Mean (standard deviation)	29.1 (16.5)	27.3 (17.1)	1.8 (0.3 to 3.3)
24 month			
Number of patients contributing	866	806	
Median (25th, 75th percentile)	27 (13, 43)	25 (13, 42)	
Mean (standard deviation)	28.6 (16.9)	27.2 (17.0)	1.7 (0.2 to 3.2)
36 month			
Number of patients contributing	652	614	
Median (25th, 75th percentile)	24 (13, 41)	25 (13, 39)	
Mean (standard deviation)	27.4 (16.5)	26.8 (16.8)	1.2 (-0.4 to 2.8)
48 month			
Number of patients contributing	482	475	
Median (25th, 75th percentile)	26 (13, 43)	23 (13, 37)	

	<b>Catheter Ablation N=1108</b>	<b>Drug Therapy N=1096</b>	<b>Adjusted Difference Between Ablation and Drug Therapy (95% CI)</b>
Mean (standard deviation)	28.0 (17.4)	25.9 (16.5)	2.2 (0.4 to 3.9)
60 month			
Number of patients contributing	328	318	
Median (25th, 75th percentile)	24 (11, 43)	21 (10, 37)	
Mean (standard deviation)	27.7 (17.6)	24.6 (17.3)	2.4 (0.3 to 4.5)
All follow-up			
Total questionnaires collected	4227	4113	
Median (25th, 75th percentile)	26 (13, 43)	24 (13, 39)	
Mean (standard deviation)	28.2 (16.7)	26.7 (16.9)	1.7 (0.4 to 3.0)

**eTable 4: SF-36 Scores in the CABANA Trial**

	Catheter Ablation N=1108	Drug Therapy N=1096	Adjusted Difference Between Ablation and Drug Therapy (95% CI)
<b>SF-36 Scales</b>			
<b>General Health Scale</b>			
Scale: 0 to 100, higher scores indicate better health status			
Baseline			
Number of patients contributing	1075	1065	
Median (25th, 75th percentile)	60 (45, 77)	57 (45, 72)	
Mean (standard deviation)	59.4 (20.1)	58.1 (19.4)	1.3 (-0.3 to 3.0)
3 month			
Number of patients contributing	963	963	
Median (25th, 75th percentile)	62 (50, 80)	62 (45, 77)	
Mean (standard deviation)	63.6 (19.6)	59.4 (20.8)	3.8 (2.1 to 5.6)
12 month			
Number of patients contributing	909	889	
Median (25th, 75th percentile)	67 (52, 82)	62 (45, 77)	
Mean (standard deviation)	65.9 (20.9)	61.1 (20.8)	5.0 (3.1 to 6.8)
24 month			
Number of patients contributing	847	781	
Median (25th, 75th percentile)	67 (50, 82)	62 (45, 77)	
Mean (standard deviation)	65.0 (21.0)	60.2 (22.0)	4.9 (3.0 to 6.9)
36 month			
Number of patients contributing	641	605	
Median (25th, 75th percentile)	67 (50, 82)	62 (45, 77)	
Mean (standard deviation)	63.9 (21.4)	60.2 (21.9)	4.6 (2.4 to 6.7)
48 month			
Number of patients contributing	469	469	
Median (25th, 75th percentile)	67 (52, 80)	62 (45, 77)	

	<b>Catheter Ablation N=1108</b>	<b>Drug Therapy N=1096</b>	<b>Adjusted Difference Between Ablation and Drug Therapy (95% CI)</b>
Mean (standard deviation)	64.0 (21.4)	61.1 (21.2)	3.6 (1.3 to 5.9)
<b>60 month</b>			
Number of patients contributing	322	314	
Median (25th, 75th percentile)	62 (47, 82)	62 (40, 77)	
Mean (standard deviation)	62.9 (21.5)	58.4 (21.8)	4.1 (1.5 to 6.8)
<b>All follow-up</b>			
Total questionnaires collected	4151	4021	
Median (25th, 75th percentile)	67 (50, 82)	62 (45, 77)	
Mean (standard deviation)	64.4 (20.8)	60.2 (21.3)	4.3 (2.7 to 5.9)
<b>SF-36 Mental Health Inventory (MHI-5)</b>			
Scale: 0 to 100, higher scores indicate better mental health status			
<b>Baseline</b>			
Number of patients contributing	1078	1071	
Median (25th, 75th percentile)	73 (55, 85)	75 (55, 85)	
Mean (standard deviation)	69.6 (20.1)	70.6 (19.3)	-0.9 (-2.6 to 0.7)
<b>3 month</b>			
Number of patients contributing	968	973	
Median (25th, 75th percentile)	80 (70, 90)	80 (65, 90)	
Mean (standard deviation)	77.3 (17.1)	76.0 (18.0)	0.9 (-0.6 to 2.4)
<b>12 month</b>			
Number of patients contributing	906	888	
Median (25th, 75th percentile)	85 (70, 90)	80 (65, 90)	
Mean (standard deviation)	79.5 (17.6)	77.0 (18.6)	2.6 (1.0 to 4.3)
<b>24 month</b>			
Number of patients contributing	852	783	
Median (25th, 75th percentile)	85 (70, 90)	85 (65, 90)	
Mean (standard deviation)	79.8 (16.6)	77.4 (19.3)	2.0 (0.4 to 3.7)
<b>36 month</b>			

	<b>Catheter Ablation N=1108</b>	<b>Drug Therapy N=1096</b>	<b>Adjusted Difference Between Ablation and Drug Therapy (95% CI)</b>
Number of patients contributing	638	608	
Median (25th, 75th percentile)	85 (70, 90)	85 (65, 90)	
Mean (standard deviation)	79.5 (17.2)	78.5 (18.3)	1.8 (-0.0 to 3.5)
<b>48 month</b>			
Number of patients contributing	471	466	
Median (25th, 75th percentile)	85 (70, 90)	85 (70, 90)	
Mean (standard deviation)	80.4 (16.6)	80.3 (17.4)	1.6 (-0.3 to 3.5)
<b>60 month</b>			
Number of patients contributing	324	317	
Median (25th, 75th percentile)	86 (75, 95)	85 (70, 90)	
Mean (standard deviation)	80.8 (18.2)	78.7 (19.7)	2.5 (0.1 to 4.8)
<b>All follow-up</b>			
Total questionnaires collected	4159	4035	
Median (25th, 75th percentile)	85 (70, 90)	85 (65, 90)	
Mean (standard deviation)	79.2 (17.2)	77.6 (18.5)	1.9 (0.5 to 3.3)

### **SF-36 Physical Functioning**

Scale: 0 to 100, higher scores indicate better physical functioning

#### **Baseline**

Number of patients contributing	1080	1073	
Median (25th, 75th percentile)	70 (45, 85)	65 (40, 85)	
Mean (standard deviation)	63.8 (26.7)	63.3 (26.0)	0.6 (-1.6 to 2.8)

#### **3 month**

Number of patients contributing	964	970	
Median (25th, 75th percentile)	80 (55, 90)	75 (50, 90)	
Mean (standard deviation)	70.9 (25.1)	67.1 (26.2)	3.3 (1.1 to 5.6)

#### **12 month**

Number of patients contributing	917	895	
---------------------------------	-----	-----	--



	<b>Catheter Ablation N=1108</b>	<b>Drug Therapy N=1096</b>	<b>Adjusted Difference Between Ablation and Drug Therapy (95% CI)</b>
Median (25th, 75th percentile)	80 (60, 95)	75 (50, 90)	
Mean (standard deviation)	73.2 (25.1)	68.7 (25.8)	4.5 (2.2 to 6.7)
<b>24 month</b>			
Number of patients contributing	856	789	
Median (25th, 75th percentile)	80 (55, 94)	75 (50, 90)	
Mean (standard deviation)	71.6 (25.5)	69.2 (26.6)	3.0 (0.6 to 5.4)
<b>36 month</b>			
Number of patients contributing	646	605	
Median (25th, 75th percentile)	80 (55, 94)	75 (50, 90)	
Mean (standard deviation)	71.3 (25.5)	69.8 (26.0)	2.3 (-0.3 to 4.8)
<b>48 month</b>			
Number of patients contributing	477	475	
Median (25th, 75th percentile)	80 (50, 95)	70 (45, 90)	
Mean (standard deviation)	70.9 (26.4)	66.6 (26.8)	4.2 (1.3 to 7.1)
<b>60 month</b>			
Number of patients contributing	321	313	
Median (25th, 75th percentile)	75 (50, 94)	70 (45, 90)	
Mean (standard deviation)	68.9 (27.4)	66.6 (27.8)	1.7 (-1.7 to 5.2)
<b>All follow-up</b>			
Total questionnaires collected	4181	4047	
Median (25th, 75th percentile)	80 (55, 94)	75 (50, 90)	
Mean (standard deviation)	71.5 (25.6)	68.2 (26.4)	3.2 (1.1 to 5.2)

### **SF-36 Social Functioning**

Scale: 0 to 100, higher scores indicate better social functioning

#### **Baseline**

Number of patients contributing	1085	1079	
Median (25th, 75th percentile)	75 (50, 100)	75 (50, 100)	
Mean (standard deviation)	70.7 (26.4)	71.7 (26.5)	-0.9 (-3.2 to 1.3)

	<b>Catheter Ablation N=1108</b>	<b>Drug Therapy N=1096</b>	<b>Adjusted Difference Between Ablation and Drug Therapy (95% CI)</b>
<b>3 month</b>			
Number of patients contributing	971	980	
Median (25th, 75th percentile)	100 (75, 100)	88 (63, 100)	
Mean (standard deviation)	82.9 (22.4)	80.8 (24.9)	1.4 (-0.6 to 3.5)
<b>12 month</b>			
Number of patients contributing	916	896	
Median (25th, 75th percentile)	100 (75, 100)	100 (75, 100)	
Mean (standard deviation)	86.6 (21.6)	83.0 (22.9)	3.7 (1.6 to 5.7)
<b>24 month</b>			
Number of patients contributing	862	792	
Median (25th, 75th percentile)	100 (75, 100)	100 (75, 100)	
Mean (standard deviation)	85.5 (20.9)	82.4 (24.1)	2.9 (0.7 to 5.0)
<b>36 month</b>			
Number of patients contributing	649	609	
Median (25th, 75th percentile)	100 (75, 100)	100 (75, 100)	
Mean (standard deviation)	85.3 (21.3)	84.2 (21.9)	1.4 (-0.8 to 3.7)
<b>48 month</b>			
Number of patients contributing	477	471	
Median (25th, 75th percentile)	100 (75, 100)	100 (75, 100)	
Mean (standard deviation)	86.3 (20.5)	83.3 (23.1)	3.6 (1.0 to 6.2)
<b>60 month</b>			
Number of patients contributing	326	317	
Median (25th, 75th percentile)	100 (75, 100)	100 (75, 100)	
Mean (standard deviation)	85.4 (22.6)	83.1 (24.3)	1.9 (-1.3 to 5.1)
<b>All follow-up</b>			
Total questionnaires collected	4201	4065	
Median (25th, 75th percentile)	100 (75, 100)	100 (75, 100)	
Mean (standard deviation)	85.2 (21.6)	82.6 (23.6)	2.5 (0.9 to 4.1)

### SF-36 Bodily Pain

	<b>Catheter Ablation N=1108</b>	<b>Drug Therapy N=1096</b>	<b>Adjusted Difference Between Ablation and Drug Therapy (95% CI)</b>
Scale: 0 to 100, higher scores indicate less pain			
Baseline			
Number of patients contributing	1078	1076	
Median (25th, 75th percentile)	72 (41, 100)	74 (42, 100)	
Mean (standard deviation)	68.7 (26.1)	68.8 (26.7)	0.0 (-2.2 to 2.2)
3 month			
Number of patients contributing	970	979	
Median (25th, 75th percentile)	74 (52, 100)	74 (51, 100)	
Mean (standard deviation)	73.4 (25.4)	71.4 (26.4)	1.7 (-0.6 to 4.0)
12 month			
Number of patients contributing	912	891	
Median (25th, 75th percentile)	74 (52, 100)	74 (51, 100)	
Mean (standard deviation)	74.4 (25.8)	71.6 (26.4)	2.9 (0.6 to 5.3)
24 month			
Number of patients contributing	854	788	
Median (25th, 75th percentile)	74 (52, 100)	74 (51, 100)	
Mean (standard deviation)	73.2 (25.8)	70.9 (26.8)	2.7 (0.2 to 5.1)
36 month			
Number of patients contributing	645	608	
Median (25th, 75th percentile)	74 (52, 100)	74 (52, 100)	
Mean (standard deviation)	72.4 (26.3)	71.2 (26.0)	1.9 (-0.7 to 4.6)
48 month			
Number of patients contributing	475	466	
Median (25th, 75th percentile)	74 (52, 100)	74 (51, 100)	
Mean (standard deviation)	72.1 (26.2)	71.5 (25.5)	1.3 (-1.6 to 4.2)
60 month			
Number of patients contributing	326	317	
Median (25th, 75th percentile)	74 (52, 100)	72 (51, 100)	
Mean (standard deviation)	71.9 (27.0)	69.2 (27.1)	1.9 (-1.8 to 5.5)

	Catheter Ablation N=1108	Drug Therapy N=1096	Adjusted Difference Between Ablation and Drug Therapy (95% CI)
All follow-up			
Total questionnaires collected	4182	4049	
Median (25th, 75th percentile)	74 (52, 100)	74 (51, 100)	
Mean (standard deviation)	73.2 (25.9)	71.2 (26.3)	2.1 (0.2 to 4.0)
<b>SF-36 Vitality</b>			
Scale: 0 to 100, higher scores indicate more vitality			
Baseline			
Number of patients contributing	1078	1071	
Median (25th, 75th percentile)	50 (38, 69)	50 (38, 69)	
Mean (standard deviation)	51.4 (22.3)	51.3 (22.4)	0.1 (-1.7 to 2.0)
3 month			
Number of patients contributing	968	973	
Median (25th, 75th percentile)	63 (50, 75)	63 (44, 75)	
Mean (standard deviation)	60.7 (21.1)	58.4 (22.0)	2.0 (0.1 to 3.9)
12 month			
Number of patients contributing	906	888	
Median (25th, 75th percentile)	69 (50, 81)	63 (50, 75)	
Mean (standard deviation)	64.4 (20.9)	60.9 (21.3)	3.6 (1.7 to 5.5)
24 month			
Number of patients contributing	852	784	
Median (25th, 75th percentile)	69 (50, 81)	63 (50, 75)	
Mean (standard deviation)	64.8 (20.1)	60.0 (22.0)	4.7 (2.8 to 6.7)
36 month			
Number of patients contributing	636	608	
Median (25th, 75th percentile)	63 (50, 75)	63 (44, 75)	
Mean (standard deviation)	63.0 (21.0)	61.0 (22.3)	2.9 (0.7 to 5.1)
48 month			
Number of patients contributing	471	466	

	<b>Catheter Ablation N=1108</b>	<b>Drug Therapy N=1096</b>	<b>Adjusted Difference Between Ablation and Drug Therapy (95% CI)</b>
Median (25th, 75th percentile)	69 (50, 81)	63 (50, 75)	
Mean (standard deviation)	64.7 (20.5)	60.1 (20.6)	4.6 (2.4 to 6.9)
<b>60 month</b>			
Number of patients contributing	324	317	
Median (25th, 75th percentile)	69 (50, 81)	63 (44, 75)	
Mean (standard deviation)	64.6 (21.0)	60.4 (22.5)	3.3 (0.5 to 6.2)
<b>All follow-up</b>			
Total questionnaires collected	4157	4036	
Median (25th, 75th percentile)	63 (50, 75)	63 (44, 75)	
Mean (standard deviation)	63.5 (20.8)	60.0 (21.8)	3.5 (2.0 to 5.1)
<b>SF-36 Role Physical Scale</b>			
Scale: 0 to 100, higher scores indicate fewer physical limitations on daily activities			
<b>Baseline</b>			
Number of patients contributing	1066	1056	
Median (25th, 75th percentile)	56 (38, 88)	56 (31, 81)	
Mean (standard deviation)	58.8 (29.6)	57.8 (29.9)	0.9 (-1.7 to 3.4)
<b>3 month</b>			
Number of patients contributing	964	963	
Median (25th, 75th percentile)	75 (50, 100)	75 (44, 100)	
Mean (standard deviation)	72.0 (27.6)	67.4 (30.3)	4.0 (1.4 to 6.5)
<b>12 month</b>			
Number of patients contributing	901	880	
Median (25th, 75th percentile)	88 (56, 100)	75 (50, 100)	
Mean (standard deviation)	76.7 (27.2)	70.6 (29.1)	5.8 (3.3 to 8.4)
<b>24 month</b>			
Number of patients contributing	850	785	
Median (25th, 75th percentile)	81 (56, 100)	75 (50, 100)	
Mean (standard deviation)	74.9 (27.7)	71.3 (29.2)	3.6 (1.0 to 6.3)

	<b>Catheter Ablation N=1108</b>	<b>Drug Therapy N=1096</b>	<b>Adjusted Difference Between Ablation and Drug Therapy (95% CI)</b>
<b>36 month</b>			
Number of patients contributing	642	603	
Median (25th, 75th percentile)	81 (56, 100)	75 (50, 100)	
Mean (standard deviation)	73.6 (28.3)	70.8 (29.6)	3.5 (0.5 to 6.5)
<b>48 month</b>			
Number of patients contributing	471	464	
Median (25th, 75th percentile)	81 (56, 100)	75 (50, 100)	
Mean (standard deviation)	74.6 (26.5)	71.6 (28.3)	3.5 (0.4 to 6.6)
<b>60 month</b>			
Number of patients contributing	324	313	
Median (25th, 75th percentile)	88 (56, 100)	75 (50, 100)	
Mean (standard deviation)	75.4 (26.9)	69.9 (30.1)	4.0 (0.1 to 7.8)
<b>All follow-up</b>			
Total questionnaires collected	4152	4008	
Median (25th, 75th percentile)	81 (56, 100)	75 (50, 100)	
Mean (standard deviation)	74.4 (27.5)	70.1 (29.5)	4.1 (2.0 to 6.1)

### **SF-36 Role Emotional Scale**

Scale: 0 to 100, higher values indicate fewer emotional problems limiting daily activities

#### **Baseline**

Number of patients contributing	1068	1063	
Median (25th, 75th percentile)	75 (50, 100)	75 (50, 100)	
Mean (standard deviation)	72.0 (28.4)	72.4 (29.3)	-0.4 (-2.9 to 2.0)
<b>3 month</b>			
Number of patients contributing	965	967	
Median (25th, 75th percentile)	100 (75, 100)	100 (67, 100)	
Mean (standard deviation)	85.3 (22.8)	82.4 (25.3)	2.4 (0.3 to 4.5)
<b>12 month</b>			
Number of patients contributing	897	883	

	<b>Catheter Ablation N=1108</b>	<b>Drug Therapy N=1096</b>	<b>Adjusted Difference Between Ablation and Drug Therapy (95% CI)</b>
Median (25th, 75th percentile)	100 (75, 100)	100 (67, 100)	
Mean (standard deviation)	86.6 (23.0)	83.7 (24.1)	3.1 (0.9 to 5.2)
<b>24 month</b>			
Number of patients contributing	846	781	
Median (25th, 75th percentile)	100 (75, 100)	100 (75, 100)	
Mean (standard deviation)	86.1 (22.5)	82.9 (24.5)	2.8 (0.6 to 5.1)
<b>36 month</b>			
Number of patients contributing	643	601	
Median (25th, 75th percentile)	100 (75, 100)	100 (75, 100)	
Mean (standard deviation)	85.5 (22.9)	85.1 (23.0)	1.2 (-1.2 to 3.6)
<b>48 month</b>			
Number of patients contributing	473	463	
Median (25th, 75th percentile)	100 (75, 100)	100 (75, 100)	
Mean (standard deviation)	86.6 (21.1)	85.3 (23.3)	2.7 (0.1 to 5.2)
<b>60 month</b>			
Number of patients contributing	324	313	
Median (25th, 75th percentile)	100 (75, 100)	100 (75, 100)	
Mean (standard deviation)	85.7 (22.7)	83.5 (25.2)	1.9 (-1.4 to 5.3)
<b>All follow-up</b>			
Total questionnaires collected	4148	4008	
Median (25th, 75th percentile)	100 (75, 100)	100 (75, 100)	
Mean (standard deviation)	85.9 (22.6)	83.6 (24.3)	2.4 (0.7 to 4.0)

**eTable 5: Toronto Atrial Fibrillation Severity Score (AFSS) in the CABANA Trial**

	Catheter Ablation N=1108	Drug Therapy N=1096	Adjusted Difference Between Ablation and Drug Therapy (95% CI)
<b>AFSS</b>			
<b>Total AF Burden Score</b>			
Scale: 3 = lowest burden, 40 = highest burden			
Baseline			
Number of patients contributing	943	952	
Median (25th, 75th percentile)	20 (15, 23)	20 (15, 23)	
Mean (standard deviation)	19.3 (5.4)	19.1 (5.4)	0.1 (-0.3 to 0.6)
3 month			
Number of patients contributing	666	711	
Median (25th, 75th percentile)	15 (11, 20)	16 (12, 21)	
Mean (standard deviation)	15.2 (6.6)	15.9 (6.3)	-0.7 (-1.4 to -0.1)
6 month			
Number of patients contributing	637	732	
Median (25th, 75th percentile)	13 (8, 18)	15 (11, 19)	
Mean (standard deviation)	13.1 (6.7)	14.7 (6.4)	-1.6 (-2.3 to -0.9)
12 month			
Number of patients contributing	610	649	
Median (25th, 75th percentile)	11 (5, 16)	14 (9, 18)	
Mean (standard deviation)	11.0 (6.7)	13.6 (6.3)	-2.6 (-3.3 to -1.9)
18 month			
Number of patients contributing	754	703	
Median (25th, 75th percentile)	3 (3, 11)	11 (3, 16)	
Mean (standard deviation)	7.2 (6.2)	10.8 (7.4)	-3.7 (-4.4 to -3.0)
24 month			
Number of patients contributing	701	633	
Median (25th, 75th percentile)	3 (3, 12)	9 (3, 17)	
Mean (standard deviation)	7.6 (6.5)	10.3 (7.5)	-2.6 (-3.3 to -1.9)



	<b>Catheter Ablation N=1108</b>	<b>Drug Therapy N=1096</b>	<b>Adjusted Difference Between Ablation and Drug Therapy (95% CI)</b>
<b>30 month</b>			
Number of patients contributing	634	591	
Median (25th, 75th percentile)	3 (3, 11)	8 (3, 15)	
Mean (standard deviation)	7.5 (6.4)	9.8 (7.5)	-2.3 (-3.0 to -1.5)
<b>36 month</b>			
Number of patients contributing	525	460	
Median (25th, 75th percentile)	3 (3, 12)	9 (3, 16)	
Mean (standard deviation)	7.3 (6.2)	10.4 (7.5)	-2.9 (-3.7 to -2.2)
<b>42 month</b>			
Number of patients contributing	509	456	
Median (25th, 75th percentile)	3 (3, 11)	8 (3, 16)	
Mean (standard deviation)	7.2 (6.3)	10.3 (7.8)	-3.0 (-3.8 to -2.2)
<b>48 month</b>			
Number of patients contributing	398	358	
Median (25th, 75th percentile)	3 (3, 11)	5 (3, 16)	
Mean (standard deviation)	7.1 (6.1)	9.7 (7.9)	-2.5 (-3.4 to -1.6)
<b>54 month</b>			
Number of patients contributing	348	326	
Median (25th, 75th percentile)	3 (3, 12)	7 (3, 16)	
Mean (standard deviation)	7.8 (6.7)	10.0 (8.0)	-2.6 (-3.6 to -1.6)
<b>60 month</b>			
Number of patients contributing	281	255	
Median (25th, 75th percentile)	3 (3, 11)	6 (3, 15)	
Mean (standard deviation)	7.3 (6.5)	9.5 (7.8)	-2.5 (-3.6 to -1.5)
<b>All follow-up</b>			
Total questionnaires collected	7006	6826	
Median (25th, 75th percentile)	9 (3, 16)	13 (4, 19)	
Mean (standard deviation)	10.6 (7.7)	12.8 (7.7)	-2.5 (-2.9 to -2.0)

### **AF Severity Score**

	<b>Catheter Ablation N=1108</b>	<b>Drug Therapy N=1096</b>	<b>Adjusted Difference Between Ablation and Drug Therapy (95% CI)</b>
Scale: 0 = mild symptoms, 10 = extremely severe symptoms			
Baseline			
Number of patients contributing	991	976	
Median (25th, 75th percentile)	5 (3, 7)	5 (3, 7)	
Mean (standard deviation)	5.2 (2.5)	5.1 (2.6)	0.1 (-0.2 to 0.3)
3 month			
Number of patients contributing	722	775	
Median (25th, 75th percentile)	5 (2, 6)	5 (2, 7)	
Mean (standard deviation)	4.5 (2.5)	4.6 (2.6)	-0.1 (-0.3 to 0.2)
6 month			
Number of patients contributing	709	799	
Median (25th, 75th percentile)	4 (2, 6)	5 (2, 7)	
Mean (standard deviation)	4.2 (2.6)	4.4 (2.5)	-0.2 (-0.5 to 0.0)
12 month			
Number of patients contributing	668	698	
Median (25th, 75th percentile)	3 (1, 6)	4 (2, 6)	
Mean (standard deviation)	3.6 (2.6)	4.1 (2.5)	-0.4 (-0.7 to -0.2)
18 month			
Number of patients contributing	774	737	
Median (25th, 75th percentile)	1 (1, 4)	3 (1, 5)	
Mean (standard deviation)	2.4 (2.3)	3.2 (2.4)	-0.7 (-1.0 to -0.5)
24 month			
Number of patients contributing	731	662	
Median (25th, 75th percentile)	1 (1, 4)	2 (1, 5)	
Mean (standard deviation)	2.5 (2.3)	3.2 (2.5)	-0.6 (-0.8 to -0.3)
30 month			
Number of patients contributing	660	611	
Median (25th, 75th percentile)	1 (1, 4)	2 (1, 5)	
Mean (standard deviation)	2.6 (2.3)	2.9 (2.4)	-0.3 (-0.6 to -0.1)

	<b>Catheter Ablation N=1108</b>	<b>Drug Therapy N=1096</b>	<b>Adjusted Difference Between Ablation and Drug Therapy (95% CI)</b>
<b>36 month</b>			
Number of patients contributing	554	483	
Median (25th, 75th percentile)	1 (1, 4)	2 (1, 5)	
Mean (standard deviation)	2.4 (2.2)	3.1 (2.5)	-0.6 (-0.9 to -0.3)
<b>42 month</b>			
Number of patients contributing	525	471	
Median (25th, 75th percentile)	1 (1, 3)	2 (1, 5)	
Mean (standard deviation)	2.3 (2.1)	2.8 (2.3)	-0.5 (-0.7 to -0.2)
<b>48 month</b>			
Number of patients contributing	413	386	
Median (25th, 75th percentile)	1 (1, 3)	1 (1, 5)	
Mean (standard deviation)	2.4 (2.2)	2.8 (2.3)	-0.3 (-0.6 to -0.0)
<b>54 month</b>			
Number of patients contributing	361	336	
Median (25th, 75th percentile)	1 (1, 3)	1 (1, 5)	
Mean (standard deviation)	2.4 (2.2)	2.8 (2.4)	-0.4 (-0.7 to -0.1)
<b>60 month</b>			
Number of patients contributing	293	267	
Median (25th, 75th percentile)	1 (1, 3)	1 (1, 5)	
Mean (standard deviation)	2.3 (2.1)	2.9 (2.6)	-0.6 (-0.9 to -0.2)
<b>All follow-up</b>			
Total questionnaires collected	6410	6225	
Median (25th, 75th percentile)	2 (1, 5)	3 (1, 6)	
Mean (standard deviation)	3.0 (2.5)	3.5 (2.6)	-0.4 (-0.6 to -0.3)

**eTable 6: EQ-5D Scores in the CABANA Trial**

	Catheter Ablation N=1108	Drug Therapy N=1096	Adjusted Difference Between Ablation and Drug Therapy (95% CI)
<b>EQ-5D</b>			
<b>Visual Analog Scale</b>			
0-100 scale, 0=worst imaginable health, 100=perfect health			
Baseline			
Number of patients contributing	1088	1079	
Median (25th, 75th percentile)	70 (60, 80)	70 (60, 80)	
Mean (standard deviation)	69.9 (17.5)	69.4 (16.9)	0.6 (-0.9 to 2.0)
3 month			
Number of patients contributing	943	934	
Median (25th, 75th percentile)	80 (70, 87)	75 (60, 85)	
Mean (standard deviation)	75.1 (16.1)	72.5 (17.0)	2.5 (1.1 to 4.0)
6 month			
Number of patients contributing	849	843	
Median (25th, 75th percentile)	80 (70, 90)	80 (65, 85)	
Mean (standard deviation)	76.7 (15.8)	73.3 (17.5)	3.5 (2.0 to 5.1)
12 month			
Number of patients contributing	884	863	
Median (25th, 75th percentile)	80 (70, 90)	75 (60, 85)	
Mean (standard deviation)	76.8 (16.6)	72.4 (17.1)	4.4 (2.9 to 6.0)
18 month			
Number of patients contributing	727	686	
Median (25th, 75th percentile)	80 (70, 90)	80 (65, 85)	
Mean (standard deviation)	77.6 (15.9)	74.0 (16.8)	3.7 (2.1 to 5.3)
24 month			
Number of patients contributing	802	765	
Median (25th, 75th percentile)	80 (70, 90)	75 (60, 85)	
Mean (standard deviation)	76.3 (16.3)	73.3 (17.3)	2.8 (1.3 to 4.4)

	<b>Catheter Ablation N=1108</b>	<b>Drug Therapy N=1096</b>	<b>Adjusted Difference Between Ablation and Drug Therapy (95% CI)</b>
<b>30 month</b>			
Number of patients contributing	550	526	
Median (25th, 75th percentile)	80 (70, 90)	80 (65, 85)	
Mean (standard deviation)	76.9 (16.6)	74.1 (17.4)	2.9 (1.1 to 4.7)
<b>36 month</b>			
Number of patients contributing	606	586	
Median (25th, 75th percentile)	80 (65, 90)	80 (60, 85)	
Mean (standard deviation)	75.3 (17.7)	73.7 (17.2)	1.9 (0.1 to 3.7)
<b>42 month</b>			
Number of patients contributing	405	394	
Median (25th, 75th percentile)	80 (70, 90)	80 (69, 85)	
Mean (standard deviation)	75.8 (16.7)	74.8 (16.8)	2.4 (0.4 to 4.3)
<b>48 month</b>			
Number of patients contributing	448	443	
Median (25th, 75th percentile)	80 (70, 89)	80 (60, 85)	
Mean (standard deviation)	75.7 (15.8)	73.5 (17.4)	2.8 (1.0 to 4.7)
<b>54 month</b>			
Number of patients contributing	293	282	
Median (25th, 75th percentile)	80 (70, 86)	80 (70, 86)	
Mean (standard deviation)	76.5 (15.1)	75.9 (16.3)	2.1 (0.0 to 4.1)
<b>60 month</b>			
Number of patients contributing	310	311	
Median (25th, 75th percentile)	80 (65, 90)	75 (60, 85)	
Mean (standard deviation)	75.0 (16.3)	73.2 (17.6)	3.0 (0.8 to 5.1)
<b>All follow-up</b>			
Total questionnaires collected	6817	6633	
Median (25th, 75th percentile)	80 (70, 90)	78 (63, 85)	
Mean (standard deviation)	76.2 (16.3)	73.4 (17.2)	2.9 (1.7 to 4.2)

### Health Status Index

	<b>Catheter Ablation N=1108</b>	<b>Drug Therapy N=1096</b>	<b>Adjusted Difference Between Ablation and Drug Therapy (95% CI)</b>
<b>Baseline</b>			
Number of patients contributing	1088	1083	
Median (25th, 75th percentile)	0.827 (0.778, 1.000)	0.827 (0.778, 1.000)	
Mean (standard deviation)	0.83 (0.15)	0.84 (0.15)	-0.003 (-0.015 to 0.010)
<b>3 month</b>			
Number of patients contributing	945	938	
Median (25th, 75th percentile)	0.844 (0.810, 1.000)	0.844 (0.794, 1.000)	
Mean (standard deviation)	0.88 (0.14)	0.86 (0.14)	0.019 (0.007 to 0.032)
<b>6 month</b>			
Number of patients contributing	850	844	
Median (25th, 75th percentile)	1.000 (0.827, 1.000)	0.844 (0.800, 1.000)	
Mean (standard deviation)	0.89 (0.14)	0.86 (0.15)	0.030 (0.016 to 0.043)
<b>12 month</b>			
Number of patients contributing	884	867	
Median (25th, 75th percentile)	0.860 (0.810, 1.000)	0.844 (0.800, 1.000)	
Mean (standard deviation)	0.88 (0.15)	0.86 (0.15)	0.026 (0.012 to 0.040)
<b>18 month</b>			
Number of patients contributing	727	688	
Median (25th, 75th percentile)	1.000 (0.827, 1.000)	0.844 (0.810, 1.000)	
Mean (standard deviation)	0.90 (0.14)	0.87 (0.15)	0.032 (0.019 to 0.046)
<b>24 month</b>			
Number of patients contributing	804	767	
Median (25th, 75th percentile)	0.854 (0.810, 1.000)	0.844 (0.800, 1.000)	
Mean (standard deviation)	0.88 (0.14)	0.86 (0.16)	0.022 (0.007 to 0.036)
<b>30 month</b>			
Number of patients contributing	551	527	
Median (25th, 75th percentile)	1.000 (0.810, 1.000)	0.860 (0.810, 1.000)	
Mean (standard deviation)	0.88 (0.16)	0.88 (0.15)	0.012 (-0.004 to 0.029)
<b>36 month</b>			
Number of patients contributing	605	586	

	<b>Catheter Ablation N=1108</b>	<b>Drug Therapy N=1096</b>	<b>Adjusted Difference Between Ablation and Drug Therapy (95% CI)</b>
Median (25th, 75th percentile)	0.860 (0.816, 1.000)	0.844 (0.794, 1.000)	
Mean (standard deviation)	0.88 (0.15)	0.86 (0.16)	0.023 (0.007 to 0.040)
<b>42 month</b>			
Number of patients contributing	404	394	
Median (25th, 75th percentile)	1.000 (0.816, 1.000)	0.854 (0.810, 1.000)	
Mean (standard deviation)	0.88 (0.15)	0.87 (0.15)	0.021 (0.003 to 0.038)
<b>48 month</b>			
Number of patients contributing	448	444	
Median (25th, 75th percentile)	0.844 (0.810, 1.000)	0.844 (0.800, 1.000)	
Mean (standard deviation)	0.87 (0.15)	0.87 (0.15)	0.010 (-0.007 to 0.027)
<b>54 month</b>			
Number of patients contributing	294	282	
Median (25th, 75th percentile)	0.860 (0.810, 1.000)	0.857 (0.827, 1.000)	
Mean (standard deviation)	0.88 (0.15)	0.88 (0.14)	0.015 (-0.005 to 0.035)
<b>60 month</b>			
Number of patients contributing	311	312	
Median (25th, 75th percentile)	0.854 (0.810, 1.000)	0.854 (0.810, 1.000)	
Mean (standard deviation)	0.87 (0.16)	0.87 (0.15)	0.015 (-0.005 to 0.036)
<b>All follow-up</b>			
Total questionnaires collected	6823	6649	
Median (25th, 75th percentile)	0.860 (0.814, 1.000)	0.844 (0.800, 1.000)	
Mean (standard deviation)	0.88 (0.15)	0.86 (0.15)	0.020 (0.010 to 0.031)

**eTable 7: Stanford Presenteeism Scale (SPS-6) Scores in the CABANA Trial**

	Catheter Ablation N=1108	Drug Therapy N=1096	Adjusted Difference Between Ablation and Drug Therapy (95% CI)
<b>SPS-6</b>			
Scale: 6 to 30, lower scores indicate lower presenteeism			
Baseline			
Number of patients contributing	379	375	
Median (25th, 75th percentile)	21 (18, 26)	21 (18, 26)	
Mean (standard deviation)	21.4 (5.6)	21.6 (5.7)	-0.1 (-0.9 to 0.7)
3 month			
Number of patients contributing	303	337	
Median (25th, 75th percentile)	26 (20, 30)	26 (20, 30)	
Mean (standard deviation)	24.7 (5.5)	24.9 (5.5)	-0.3 (-1.1 to 0.5)
6 month			
Number of patients contributing	300	314	
Median (25th, 75th percentile)	29 (23, 30)	28 (21, 30)	
Mean (standard deviation)	26.0 (5.1)	25.4 (5.2)	0.5 (-0.3 to 1.2)
12 month			
Number of patients contributing	272	280	
Median (25th, 75th percentile)	30 (22, 30)	28 (22, 30)	
Mean (standard deviation)	26.2 (4.9)	25.8 (4.9)	0.4 (-0.4 to 1.2)
18 month			
Number of patients contributing	250	258	
Median (25th, 75th percentile)	29 (23, 30)	30 (24, 30)	
Mean (standard deviation)	26.0 (5.2)	26.5 (4.7)	-0.4 (-1.3 to 0.4)
24 month			
Number of patients contributing	247	246	
Median (25th, 75th percentile)	29 (21, 30)	29 (21, 30)	
Mean (standard deviation)	25.8 (5.3)	25.8 (5.3)	-0.2 (-1.1 to 0.7)
30 month			



	<b>Catheter Ablation N=1108</b>	<b>Drug Therapy N=1096</b>	<b>Adjusted Difference Between Ablation and Drug Therapy (95% CI)</b>
Number of patients contributing	208	209	
Median (25th, 75th percentile)	29 (24, 30)	29 (22, 30)	
Mean (standard deviation)	26.3 (4.8)	25.6 (5.6)	0.3 (-0.6 to 1.3)
<b>36 month</b>			
Number of patients contributing	174	168	
Median (25th, 75th percentile)	28 (22, 30)	29 (22, 30)	
Mean (standard deviation)	25.9 (4.8)	25.7 (5.4)	-0.0 (-1.0 to 1.0)
<b>42 month</b>			
Number of patients contributing	149	147	
Median (25th, 75th percentile)	28 (22, 30)	29 (21, 30)	
Mean (standard deviation)	26.0 (4.8)	25.8 (5.0)	0.1 (-1.0 to 1.1)
<b>48 month</b>			
Number of patients contributing	127	136	
Median (25th, 75th percentile)	29 (21, 30)	29 (24, 30)	
Mean (standard deviation)	25.9 (5.0)	26.4 (4.7)	-0.8 (-1.9 to 0.3)
<b>54 month</b>			
Number of patients contributing	104	86	
Median (25th, 75th percentile)	29 (22, 30)	30 (24, 30)	
Mean (standard deviation)	26.1 (5.0)	26.4 (5.1)	-0.0 (-1.4 to 1.3)
<b>60 month</b>			
Number of patients contributing	80	72	
Median (25th, 75th percentile)	30 (26, 30)	30 (26, 30)	
Mean (standard deviation)	27.3 (4.4)	27.1 (4.4)	-0.1 (-1.5 to 1.2)
<b>All follow-up</b>			
Total questionnaires collected	2214	2253	
Median (25th, 75th percentile)	29 (22, 30)	29 (22, 30)	
Mean (standard deviation)	25.9 (5.1)	25.8 (5.2)	-0.1 (-0.6 to 0.4)

**eTable 8: Work Productivity And Impairment (WPAI) Scores in the CABANA Trial**

	Catheter Ablation N=1108	Drug Therapy N=1096	Adjusted Difference Between Ablation and Drug Therapy (95% CI)
<b>WPAI:General Health</b>			
<b>Percent work time missed due to health</b>			
Baseline			
Number of patients contributing	253	253	
Median (25th, 75th percentile)	0 (0, 21)	0 (0, 22)	
Mean (standard deviation)	18.1 (32.7)	17.5 (32.0)	0.8 (-4.8 to 6.5)
3 month			
Number of patients contributing	213	223	
Median (25th, 75th percentile)	0 (0, 0)	0 (0, 0)	
Mean (standard deviation)	11.0 (28.4)	8.9 (24.5)	2.0 (-2.9 to 6.8)
6 month			
Number of patients contributing	197	222	
Median (25th, 75th percentile)	0 (0, 0)	0 (0, 0)	
Mean (standard deviation)	6.0 (19.8)	7.3 (23.2)	-1.2 (-5.2 to 2.9)
12 month			
Number of patients contributing	181	198	
Median (25th, 75th percentile)	0 (0, 0)	0 (0, 0)	
Mean (standard deviation)	4.8 (17.6)	7.8 (23.2)	-2.4 (-6.8 to 2.0)
18 month			
Number of patients contributing	181	178	
Median (25th, 75th percentile)	0 (0, 0)	0 (0, 0)	
Mean (standard deviation)	3.6 (15.1)	5.2 (20.8)	-1.0 (-4.8 to 2.7)
24 month			
Number of patients contributing	166	173	
Median (25th, 75th percentile)	0 (0, 0)	0 (0, 0)	
Mean (standard deviation)	4.5 (16.0)	4.4 (17.0)	0.0 (-3.4 to 3.5)

	<b>Catheter Ablation N=1108</b>	<b>Drug Therapy N=1096</b>	<b>Adjusted Difference Between Ablation and Drug Therapy (95% CI)</b>
<b>30 month</b>			
Number of patients contributing	144	145	
Median (25th, 75th percentile)	0 (0, 0)	0 (0, 0)	
Mean (standard deviation)	3.3 (13.9)	5.5 (20.0)	-2.9 (-6.8 to 1.1)
<b>36 month</b>			
Number of patients contributing	116	121	
Median (25th, 75th percentile)	0 (0, 0)	0 (0, 0)	
Mean (standard deviation)	5.8 (21.9)	5.6 (19.9)	-0.5 (-5.8 to 4.7)
<b>42 month</b>			
Number of patients contributing	118	99	
Median (25th, 75th percentile)	0 (0, 0)	0 (0, 0)	
Mean (standard deviation)	2.2 (11.4)	2.6 (12.6)	0.0 (-3.3 to 3.4)
<b>48 month</b>			
Number of patients contributing	90	86	
Median (25th, 75th percentile)	0 (0, 0)	0 (0, 0)	
Mean (standard deviation)	6.0 (20.5)	5.4 (18.1)	-0.8 (-6.7 to 5.0)
<b>54 month</b>			
Number of patients contributing	77	67	
Median (25th, 75th percentile)	0 (0, 0)	0 (0, 0)	
Mean (standard deviation)	2.9 (16.1)	2.4 (13.0)	1.7 (-2.2 to 5.6)
<b>60 month</b>			
Number of patients contributing	67	51	
Median (25th, 75th percentile)	0 (0, 0)	0 (0, 0)	
Mean (standard deviation)	3.9 (17.7)	6.3 (22.7)	-1.0 (-9.3 to 7.3)
<b>All follow-up</b>			
Number of patients contributing	1550	1563	
Median (25th, 75th percentile)	0 (0, 0)	0 (0, 0)	
Mean (standard deviation)	5.3 (19.2)	6.1 (20.8)	-0.6 (-2.2 to 1.1)

	Catheter Ablation N=1108	Drug Therapy N=1096	Adjusted Difference Between Ablation and Drug Therapy (95% CI)
<b>Percent impairment while working due to health</b>			
Baseline			
Number of patients contributing	316	309	
Median (25th, 75th percentile)	10 (0, 40)	10 (0, 40)	
Mean (standard deviation)	21.7 (24.8)	21.2 (23.3)	0.6 (-3.1 to 4.3)
3 month			
Number of patients contributing	309	330	
Median (25th, 75th percentile)	0 (0, 20)	0 (0, 20)	
Mean (standard deviation)	11.8 (19.9)	13.9 (21.6)	-2.4 (-5.5 to 0.8)
6 month			
Number of patients contributing	301	309	
Median (25th, 75th percentile)	0 (0, 10)	0 (0, 20)	
Mean (standard deviation)	9.1 (17.2)	11.9 (19.0)	-2.6 (-5.4 to 0.2)
12 month			
Number of patients contributing	308	302	
Median (25th, 75th percentile)	0 (0, 10)	0 (0, 20)	
Mean (standard deviation)	7.1 (15.3)	11.4 (19.6)	-4.0 (-6.7 to -1.2)
18 month			
Number of patients contributing	268	250	
Median (25th, 75th percentile)	0 (0, 10)	0 (0, 10)	
Mean (standard deviation)	7.5 (16.3)	9.8 (18.6)	-2.0 (-5.0 to 0.9)
24 month			
Number of patients contributing	283	281	
Median (25th, 75th percentile)	0 (0, 10)	0 (0, 20)	
Mean (standard deviation)	9.8 (19.0)	13.1 (22.6)	-2.9 (-6.2 to 0.4)
30 month			
Number of patients contributing	215	205	
Median (25th, 75th percentile)	0 (0, 10)	0 (0, 10)	
Mean (standard deviation)	10.0 (19.6)	11.2 (21.2)	-0.7 (-4.4 to 3.0)

	Catheter Ablation N=1108	Drug Therapy N=1096	Adjusted Difference Between Ablation and Drug Therapy (95% CI)
<b>36 month</b>			
Number of patients contributing	206	209	
Median (25th, 75th percentile)	0 (0, 20)	0 (0, 20)	
Mean (standard deviation)	10.0 (19.1)	12.8 (21.6)	-3.0 (-6.8 to 0.8)
<b>42 month</b>			
Number of patients contributing	160	146	
Median (25th, 75th percentile)	0 (0, 10)	0 (0, 20)	
Mean (standard deviation)	8.6 (16.4)	12.6 (22.6)	-5.0 (-9.1 to -1.0)
<b>48 month</b>			
Number of patients contributing	159	161	
Median (25th, 75th percentile)	0 (0, 20)	0 (0, 10)	
Mean (standard deviation)	13.0 (23.4)	11.9 (21.5)	1.0 (-3.7 to 5.7)
<b>54 month</b>			
Number of patients contributing	102	90	
Median (25th, 75th percentile)	0 (0, 10)	0 (0, 0)	
Mean (standard deviation)	5.9 (12.2)	6.3 (16.7)	-1.5 (-5.5 to 2.5)
<b>60 month</b>			
Number of patients contributing	111	99	
Median (25th, 75th percentile)	0 (0, 10)	0 (0, 10)	
Mean (standard deviation)	7.8 (16.3)	12.4 (23.4)	-4.8 (-10.2 to 0.6)
<b>All follow-up</b>			
Number of patients contributing	2422	2382	
Median (25th, 75th percentile)	0 (0, 10)	0 (0, 20)	
Mean (standard deviation)	9.3 (18.1)	11.9 (20.8)	-2.5 (-4.4 to -0.6)

**Percent overall work impairment due to health**

**Baseline**

Number of patients contributing	227	228
Median (25th, 75th percentile)	20 (0, 50)	20 (0, 50)

	<b>Catheter Ablation N=1108</b>	<b>Drug Therapy N=1096</b>	<b>Adjusted Difference Between Ablation and Drug Therapy (95% CI)</b>
Mean (standard deviation)	27.4 (29.5)	27.4 (28.5)	0.2 (-5.1 to 5.4)
<b>3 month</b>			
Number of patients contributing	195	212	
Median (25th, 75th percentile)	0 (0, 20)	0 (0, 30)	
Mean (standard deviation)	15.9 (24.4)	17.2 (25.5)	-1.0 (-5.8 to 3.7)
<b>6 month</b>			
Number of patients contributing	192	210	
Median (25th, 75th percentile)	0 (0, 15)	0 (0, 20)	
Mean (standard deviation)	11.8 (22.0)	13.3 (20.2)	-1.1 (-5.0 to 2.9)
<b>12 month</b>			
Number of patients contributing	179	188	
Median (25th, 75th percentile)	0 (0, 10)	0 (0, 20)	
Mean (standard deviation)	9.5 (19.9)	14.4 (23.0)	-4.9 (-9.1 to -0.6)
<b>18 month</b>			
Number of patients contributing	177	169	
Median (25th, 75th percentile)	0 (0, 10)	0 (0, 10)	
Mean (standard deviation)	8.8 (18.1)	10.6 (19.8)	-0.8 (-4.7 to 3.2)
<b>24 month</b>			
Number of patients contributing	159	167	
Median (25th, 75th percentile)	0 (0, 20)	0 (0, 30)	
Mean (standard deviation)	12.0 (20.5)	15.5 (23.8)	-2.1 (-6.7 to 2.6)
<b>30 month</b>			
Number of patients contributing	139	139	
Median (25th, 75th percentile)	0 (0, 20)	0 (0, 20)	
Mean (standard deviation)	14.0 (23.3)	14.1 (23.6)	0.5 (-4.6 to 5.6)
<b>36 month</b>			
Number of patients contributing	108	115	
Median (25th, 75th percentile)	0 (0, 20)	0 (0, 20)	
Mean (standard deviation)	11.5 (20.8)	13.1 (22.2)	-1.4 (-6.8 to 4.0)
<b>42 month</b>			

	<b>Catheter Ablation N=1108</b>	<b>Drug Therapy N=1096</b>	<b>Adjusted Difference Between Ablation and Drug Therapy (95% CI)</b>
Number of patients contributing	114	97	
Median (25th, 75th percentile)	0 (0, 20)	0 (0, 20)	
Mean (standard deviation)	10.4 (18.8)	15.4 (23.8)	-4.2 (-9.6 to 1.2)
<b>48 month</b>			
Number of patients contributing	88	83	
Median (25th, 75th percentile)	0 (0, 10)	0 (0, 10)	
Mean (standard deviation)	13.0 (24.7)	13.9 (25.8)	0.7 (-6.7 to 8.0)
<b>54 month</b>			
Number of patients contributing	74	66	
Median (25th, 75th percentile)	0 (0, 0)	0 (0, 10)	
Mean (standard deviation)	5.3 (12.2)	7.1 (15.3)	-2.3 (-6.7 to 2.1)
<b>60 month</b>			
Number of patients contributing	65	48	
Median (25th, 75th percentile)	0 (0, 10)	0 (0, 15)	
Mean (standard deviation)	9.3 (18.6)	13.5 (26.0)	-3.8 (-12.3 to 4.7)
<b>All follow-up</b>			
Number of patients contributing	1490	1494	
Median (25th, 75th percentile)	0 (0, 17)	0 (0, 20)	
Mean (standard deviation)	11.4 (21.0)	13.9 (22.8)	-1.9 (-4.3 to 0.6)

**eTable 9: AFEQT Scores in the 6-Month Per Protocol Analysis in the CABANA Trial**

	Catheter Ablation N=969	Drug Therapy N=1096	Adjusted Difference Between Ablation and Drug Therapy (95% CI)
<b>AFEQT</b>			
<b>Summary Score</b>			
Scale: 0 = complete disability, 100 = no disability			
Baseline			
Number of patients contributing	954	1078	
Median (25th, 75th percentile)	63 (48, 79)	63 (48, 80)	
Mean (standard deviation)	62.5 (20.4)	63.1 (20.6)	-0.6 (-2.4 to 1.2)
3 month			
Number of patients contributing	886	946	
Median (25th, 75th percentile)	86 (69, 95)	81 (63, 94)	
Mean (standard deviation)	80.2 (18.7)	76.8 (20.1)	3.2 (1.5 to 5.0)
12 month			
Number of patients contributing	838	774	
Median (25th, 75th percentile)	94 (81, 99)	86 (69, 96)	
Mean (standard deviation)	87.0 (16.3)	80.5 (18.5)	6.8 (5.2 to 8.5)
24 month			
Number of patients contributing	791	613	
Median (25th, 75th percentile)	94 (79, 99)	87 (71, 97)	
Mean (standard deviation)	86.9 (16.0)	81.3 (18.9)	6.4 (4.6 to 8.1)
36 month			
Number of patients contributing	595	430	
Median (25th, 75th percentile)	93 (79, 99)	89 (75, 96)	
Mean (standard deviation)	86.4 (15.8)	83.3 (17.2)	5.0 (3.2 to 6.9)
48 month			
Number of patients contributing	440	311	
Median (25th, 75th percentile)	92 (78, 99)	88 (74, 97)	



	<b>Catheter Ablation N=969</b>	<b>Drug Therapy N=1096</b>	<b>Adjusted Difference Between Ablation and Drug Therapy (95% CI)</b>
Mean (standard deviation)	86.1 (16.0)	82.7 (17.6)	5.4 (3.3 to 7.5)
60 month			
Number of patients contributing	306	208	
Median (25th, 75th percentile)	93 (77, 100)	88 (74, 96)	
Mean (standard deviation)	86.1 (16.2)	81.9 (18.9)	5.6 (3.0 to 8.1)
All follow-up			
Number of patients contributing	3856	3282	
Median (25th, 75th percentile)	92 (77, 99)	86 (69, 96)	
Mean (standard deviation)	85.1 (16.9)	80.2 (19.0)	5.4 (4.0 to 6.8)

**eTable 10: AFEQT Scores in the 3-Month Per Protocol Analysis in the CABANA Trial**

	Catheter Ablation N=892	Drug Therapy N=1096	Adjusted Difference Between Ablation and Drug Therapy (95% CI)
<b>AFEQT</b>			
<b>Summary Score</b>			
Scale: 0 = complete disability, 100 = no disability			
Baseline			
Number of patients contributing	877	1078	
Median (25th, 75th percentile)	63 (48, 79)	63 (48, 80)	
Mean (standard deviation)	62.3 (20.4)	63.1 (20.6)	-0.7 (-2.5 to 1.1)
3 month			
Number of patients contributing	820	946	
Median (25th, 75th percentile)	86 (71, 95)	81 (63, 94)	
Mean (standard deviation)	80.7 (18.4)	76.8 (20.1)	3.8 (2.0 to 5.5)
12 month			
Number of patients contributing	780	774	
Median (25th, 75th percentile)	94 (81, 99)	86 (69, 96)	
Mean (standard deviation)	87.1 (16.4)	80.5 (18.5)	7.1 (5.4 to 8.8)
24 month			
Number of patients contributing	736	613	
Median (25th, 75th percentile)	94 (79, 99)	87 (71, 97)	
Mean (standard deviation)	86.9 (15.9)	81.3 (18.9)	6.5 (4.7 to 8.3)
36 month			
Number of patients contributing	554	430	
Median (25th, 75th percentile)	93 (78, 99)	89 (75, 96)	
Mean (standard deviation)	86.5 (15.8)	83.3 (17.2)	5.3 (3.4 to 7.1)
48 month			
Number of patients contributing	408	311	
Median (25th, 75th percentile)	92 (78, 100)	88 (74, 97)	

	<b>Catheter Ablation N=892</b>	<b>Drug Therapy N=1096</b>	<b>Adjusted Difference Between Ablation and Drug Therapy (95% CI)</b>
Mean (standard deviation)	85.9 (16.3)	82.7 (17.6)	5.4 (3.3 to 7.5)
60 month			
Number of patients contributing	291	208	
Median (25th, 75th percentile)	93 (77, 100)	88 (74, 96)	
Mean (standard deviation)	86.4 (15.5)	81.9 (18.9)	5.7 (3.2 to 8.3)
All follow-up			
Number of patients contributing	3589	3282	
Median (25th, 75th percentile)	92 (77, 99)	86 (69, 96)	
Mean (standard deviation)	85.3 (16.8)	80.2 (19.0)	5.6 (4.2 to 7.0)

**eTable 11: AFEQT Scores in the 12-Month Per Protocol Analysis in the CABANA Trial**

	<b>Catheter Ablation N=987</b>	<b>Drug Therapy N=1096</b>	<b>Adjusted Difference Between Ablation and Drug Therapy (95% CI)</b>
<b>AFEQT</b>			
<b>Summary Score</b>			
Scale: 0 = complete disability, 100 = no disability			
Baseline			
Number of patients contributing	972	1078	
Median (25th, 75th percentile)	63 (48, 79)	63 (48, 80)	
Mean (standard deviation)	62.7 (20.5)	63.1 (20.6)	-0.4 (-2.2 to 1.4)
3 month			
Number of patients contributing	903	946	
Median (25th, 75th percentile)	86 (69, 95)	81 (63, 94)	
Mean (standard deviation)	80.1 (18.6)	76.8 (20.1)	3.2 (1.4 to 4.9)
12 month			
Number of patients contributing	853	774	
Median (25th, 75th percentile)	94 (81, 99)	86 (69, 96)	
Mean (standard deviation)	87.0 (16.2)	80.5 (18.5)	6.9 (5.2 to 8.5)
24 month			
Number of patients contributing	806	613	
Median (25th, 75th percentile)	94 (79, 99)	87 (71, 97)	
Mean (standard deviation)	87.0 (15.9)	81.3 (18.9)	6.4 (4.7 to 8.2)
36 month			
Number of patients contributing	607	430	
Median (25th, 75th percentile)	93 (79, 99)	89 (75, 96)	
Mean (standard deviation)	86.5 (15.7)	83.3 (17.2)	5.1 (3.2 to 6.9)
48 month			
Number of patients contributing	450	311	
Median (25th, 75th percentile)	92 (78, 99)	88 (74, 97)	

	<b>Catheter Ablation N=987</b>	<b>Drug Therapy N=1096</b>	<b>Adjusted Difference Between Ablation and Drug Therapy (95% CI)</b>
Mean (standard deviation)	86.2 (16.0)	82.7 (17.6)	5.5 (3.4 to 7.6)
60 month			
Number of patients contributing	313	208	
Median (25th, 75th percentile)	93 (77, 100)	88 (74, 96)	
Mean (standard deviation)	86.3 (16.1)	81.9 (18.9)	5.7 (3.2 to 8.3)
All follow-up			
Number of patients contributing	3932	3282	
Median (25th, 75th percentile)	92 (77, 99)	86 (69, 96)	
Mean (standard deviation)	85.2 (16.9)	80.2 (19.0)	5.5 (4.1 to 6.9)

**eTable 12: MAFSI Scores in the 6-Month Per Protocol Analysis in the CABANA Trial**

	<b>Catheter Ablation N=969</b>	<b>Drug Therapy N=1096</b>	<b>Adjusted Difference Between Ablation and Drug Therapy (95% CI)</b>
<b>MAFSI</b>			
<b>Frequency Score</b>			
Scale: 0 = no symptoms, 40 = maximum symptoms			
Baseline			
Number of patients contributing	945	1061	
Median (25th, 75th percentile)	11 (7, 16)	11 (7, 16)	
Mean (standard deviation)	11.9 (6.2)	11.9 (6.4)	-0.1 (-0.6 to 0.5)
3 month			
Number of patients contributing	830	861	
Median (25th, 75th percentile)	6 (2, 11)	8 (3, 13)	
Mean (standard deviation)	7.3 (5.9)	8.7 (6.4)	-1.6 (-2.1 to -1.0)
12 month			
Number of patients contributing	763	717	
Median (25th, 75th percentile)	5 (2, 10)	7 (3, 12)	
Mean (standard deviation)	6.3 (6.0)	8.0 (6.2)	-1.9 (-2.5 to -1.3)
24 month			
Number of patients contributing	700	560	
Median (25th, 75th percentile)	5 (1, 10)	7 (3, 12)	
Mean (standard deviation)	6.2 (5.7)	8.1 (6.5)	-2.1 (-2.8 to -1.5)
36 month			
Number of patients contributing	525	404	
Median (25th, 75th percentile)	5 (2, 10)	6 (2, 12)	
Mean (standard deviation)	6.5 (5.8)	7.7 (6.4)	-1.8 (-2.5 to -1.1)
48 month			
Number of patients contributing	392	282	
Median (25th, 75th percentile)	5 (1, 10)	6 (2, 11)	
Mean (standard deviation)	6.5 (6.2)	7.2 (6.2)	-1.4 (-2.2 to -0.6)

	Catheter Ablation N=969	Drug Therapy N=1096	Adjusted Difference Between Ablation and Drug Therapy (95% CI)
<b>60 month</b>			
Number of patients contributing	264	198	
Median (25th, 75th percentile)	4 (1, 9)	6 (2, 10)	
Mean (standard deviation)	5.7 (5.6)	7.1 (6.4)	-1.8 (-2.8 to -0.9)
<b>All follow-up</b>			
Total questionnaires collected	3474	3022	
Median (25th, 75th percentile)	5 (2, 10)	7 (3, 12)	
Mean (standard deviation)	6.5 (5.9)	8.1 (6.4)	-1.8 (-2.3 to -1.3)
<b>Severity Score</b>			
Scale: 0 = mild symptoms, 30 = extreme symptoms			
<b>Baseline</b>			
Number of patients contributing	943	1056	
Median (25th, 75th percentile)	9 (6, 13)	9 (5, 13)	
Mean (standard deviation)	9.4 (5.0)	9.3 (5.1)	0.0 (-0.4 to 0.5)
<b>3 month</b>			
Number of patients contributing	826	859	
Median (25th, 75th percentile)	5 (2, 9)	6 (3, 11)	
Mean (standard deviation)	5.8 (4.7)	7.0 (5.2)	-1.3 (-1.7 to -0.8)
<b>12 month</b>			
Number of patients contributing	762	717	
Median (25th, 75th percentile)	4 (1, 7)	5 (2, 10)	
Mean (standard deviation)	4.9 (4.7)	6.5 (5.0)	-1.6 (-2.0 to -1.1)
<b>24 month</b>			
Number of patients contributing	698	558	
Median (25th, 75th percentile)	4 (1, 8)	5 (2, 9)	
Mean (standard deviation)	4.9 (4.5)	6.3 (5.1)	-1.6 (-2.1 to -1.1)
<b>36 month</b>			
Number of patients contributing	524	404	

	<b>Catheter Ablation N=969</b>	<b>Drug Therapy N=1096</b>	<b>Adjusted Difference Between Ablation and Drug Therapy (95% CI)</b>
Median (25th, 75th percentile)	4 (1, 8)	5 (2, 9)	
Mean (standard deviation)	5.1 (4.5)	6.0 (5.1)	-1.4 (-2.0 to -0.9)
<b>48 month</b>			
Number of patients contributing	391	282	
Median (25th, 75th percentile)	4 (1, 8)	5 (2, 9)	
Mean (standard deviation)	5.0 (4.7)	5.6 (4.8)	-1.1 (-1.7 to -0.5)
<b>60 month</b>			
Number of patients contributing	264	198	
Median (25th, 75th percentile)	3 (1, 7)	4 (2, 9)	
Mean (standard deviation)	4.5 (4.6)	5.7 (5.1)	-1.5 (-2.2 to -0.7)
<b>All follow-up</b>			
Total questionnaires collected	3465	3018	
Median (25th, 75th percentile)	4 (1, 8)	5 (2, 10)	
Mean (standard deviation)	5.1 (4.6)	6.4 (5.1)	-1.4 (-1.8 to -1.0)



**eTable 13: MAFSI Scores in the 3-Month Per Protocol Analysis in the CABANA Trial**

	Catheter Ablation N=892	Drug Therapy N=1096	Adjusted Difference Between Ablation and Drug Therapy (95% CI)
<b>MAFSI</b>			
<b>Frequency Score</b>			
Scale: 0 = no symptoms, 40 = maximum symptoms			
Baseline			
Number of patients contributing	870	1061	
Median (25th, 75th percentile)	11 (7, 16)	11 (7, 16)	
Mean (standard deviation)	11.8 (6.2)	11.9 (6.4)	-0.1 (-0.7 to 0.4)
3 month			
Number of patients contributing	765	861	
Median (25th, 75th percentile)	6 (2, 11)	8 (3, 13)	
Mean (standard deviation)	6.9 (5.8)	8.7 (6.4)	-1.9 (-2.5 to -1.3)
12 month			
Number of patients contributing	707	717	
Median (25th, 75th percentile)	5 (1, 10)	7 (3, 12)	
Mean (standard deviation)	6.3 (6.0)	8.0 (6.2)	-1.9 (-2.5 to -1.3)
24 month			
Number of patients contributing	655	560	
Median (25th, 75th percentile)	5 (1, 10)	7 (3, 12)	
Mean (standard deviation)	6.2 (5.7)	8.1 (6.5)	-2.2 (-2.9 to -1.6)
36 month			
Number of patients contributing	491	404	
Median (25th, 75th percentile)	5 (2, 10)	6 (2, 12)	
Mean (standard deviation)	6.3 (5.8)	7.7 (6.4)	-1.9 (-2.6 to -1.2)
48 month			
Number of patients contributing	370	282	
Median (25th, 75th percentile)	5 (1, 10)	6 (2, 11)	
Mean (standard deviation)	6.5 (6.1)	7.2 (6.2)	-1.5 (-2.3 to -0.7)

	<b>Catheter Ablation N=892</b>	<b>Drug Therapy N=1096</b>	<b>Adjusted Difference Between Ablation and Drug Therapy (95% CI)</b>
<b>60 month</b>			
Number of patients contributing	254	198	
Median (25th, 75th percentile)	4 (1, 9)	6 (2, 10)	
Mean (standard deviation)	5.6 (5.5)	7.1 (6.4)	-2.0 (-2.9 to -1.0)
<b>All follow-up</b>			
Total questionnaires collected	3242	3022	
Median (25th, 75th percentile)	5 (2, 10)	7 (3, 12)	
Mean (standard deviation)	6.4 (5.9)	8.1 (6.4)	-1.9 (-2.4 to -1.4)
<b>Severity Score</b>			
Scale: 0 = mild symptoms, 30 = extreme symptoms			
<b>Baseline</b>			
Number of patients contributing	869	1056	
Median (25th, 75th percentile)	9 (6, 13)	9 (5, 13)	
Mean (standard deviation)	9.3 (5.0)	9.3 (5.1)	-0.0 (-0.5 to 0.4)
<b>3 month</b>			
Number of patients contributing	761	859	
Median (25th, 75th percentile)	5 (2, 8)	6 (3, 11)	
Mean (standard deviation)	5.5 (4.6)	7.0 (5.2)	-1.5 (-2.0 to -1.1)
<b>12 month</b>			
Number of patients contributing	707	717	
Median (25th, 75th percentile)	4 (1, 8)	5 (2, 10)	
Mean (standard deviation)	5.0 (4.8)	6.5 (5.0)	-1.6 (-2.1 to -1.1)
<b>24 month</b>			
Number of patients contributing	653	558	
Median (25th, 75th percentile)	4 (1, 8)	5 (2, 9)	
Mean (standard deviation)	4.8 (4.5)	6.3 (5.1)	-1.7 (-2.2 to -1.2)
<b>36 month</b>			
Number of patients contributing	490	404	

	<b>Catheter Ablation N=892</b>	<b>Drug Therapy N=1096</b>	<b>Adjusted Difference Between Ablation and Drug Therapy (95% CI)</b>
Median (25th, 75th percentile)	4 (1, 8)	5 (2, 9)	
Mean (standard deviation)	5.0 (4.5)	6.0 (5.1)	-1.6 (-2.1 to -1.0)
<b>48 month</b>			
Number of patients contributing	369	282	
Median (25th, 75th percentile)	4 (1, 8)	5 (2, 9)	
Mean (standard deviation)	5.0 (4.7)	5.6 (4.8)	-1.2 (-1.8 to -0.5)
<b>60 month</b>			
Number of patients contributing	254	198	
Median (25th, 75th percentile)	3 (1, 6)	4 (2, 9)	
Mean (standard deviation)	4.5 (4.4)	5.7 (5.1)	-1.6 (-2.3 to -0.9)
<b>All follow-up</b>			
Total questionnaires collected	3234	3018	
Median (25th, 75th percentile)	4 (1, 8)	5 (2, 10)	
Mean (standard deviation)	5.0 (4.6)	6.4 (5.1)	-1.5 (-1.9 to -1.1)

**eTable 14: MAFSI Scores in the 12-Month Per Protocol Analysis in the CABANA Trial**

	Catheter Ablation N=987	Drug Therapy N=1096	Adjusted Difference Between Ablation and Drug Therapy (95% CI)
<b>MAFSI</b>			
<b>Frequency Score</b>			
Scale: 0 = no symptoms, 40 = maximum symptoms			
Baseline			
Number of patients contributing	962	1061	
Median (25th, 75th percentile)	11 (7, 16)	11 (7, 16)	
Mean (standard deviation)	11.9 (6.2)	11.9 (6.4)	-0.1 (-0.6 to 0.5)
3 month			
Number of patients contributing	845	861	
Median (25th, 75th percentile)	6 (2, 11)	8 (3, 13)	
Mean (standard deviation)	7.3 (5.9)	8.7 (6.4)	-1.5 (-2.1 to -0.9)
12 month			
Number of patients contributing	775	717	
Median (25th, 75th percentile)	5 (1, 10)	7 (3, 12)	
Mean (standard deviation)	6.3 (6.0)	8.0 (6.2)	-1.9 (-2.5 to -1.3)
24 month			
Number of patients contributing	711	560	
Median (25th, 75th percentile)	5 (1, 10)	7 (3, 12)	
Mean (standard deviation)	6.2 (5.7)	8.1 (6.5)	-2.2 (-2.8 to -1.5)
36 month			
Number of patients contributing	536	404	
Median (25th, 75th percentile)	5 (2, 10)	6 (2, 12)	
Mean (standard deviation)	6.4 (5.8)	7.7 (6.4)	-1.8 (-2.5 to -1.1)
48 month			
Number of patients contributing	398	282	
Median (25th, 75th percentile)	5 (1, 10)	6 (2, 11)	
Mean (standard deviation)	6.5 (6.1)	7.2 (6.2)	-1.4 (-2.2 to -0.6)

	<b>Catheter Ablation N=987</b>	<b>Drug Therapy N=1096</b>	<b>Adjusted Difference Between Ablation and Drug Therapy (95% CI)</b>
<b>60 month</b>			
Number of patients contributing	266	198	
Median (25th, 75th percentile)	4 (1, 9)	6 (2, 10)	
Mean (standard deviation)	5.7 (5.5)	7.1 (6.4)	-1.8 (-2.8 to -0.9)
<b>All follow-up</b>			
Total questionnaires collected	3531	3022	
Median (25th, 75th percentile)	5 (2, 10)	7 (3, 12)	
Mean (standard deviation)	6.5 (5.9)	8.1 (6.4)	-1.8 (-2.3 to -1.3)
<b>Severity Score</b>			
Scale: 0 = mild symptoms, 30 = extreme symptoms			
<b>Baseline</b>			
Number of patients contributing	960	1056	
Median (25th, 75th percentile)	9 (6, 13)	9 (5, 13)	
Mean (standard deviation)	9.4 (5.0)	9.3 (5.1)	0.0 (-0.4 to 0.5)
<b>3 month</b>			
Number of patients contributing	841	859	
Median (25th, 75th percentile)	5 (2, 9)	6 (3, 11)	
Mean (standard deviation)	5.8 (4.7)	7.0 (5.2)	-1.3 (-1.7 to -0.8)
<b>12 month</b>			
Number of patients contributing	774	717	
Median (25th, 75th percentile)	4 (1, 7)	5 (2, 10)	
Mean (standard deviation)	4.9 (4.7)	6.5 (5.0)	-1.6 (-2.1 to -1.1)
<b>24 month</b>			
Number of patients contributing	709	558	
Median (25th, 75th percentile)	4 (1, 8)	5 (2, 9)	
Mean (standard deviation)	4.9 (4.5)	6.3 (5.1)	-1.6 (-2.1 to -1.2)
<b>36 month</b>			
Number of patients contributing	535	404	

	<b>Catheter Ablation N=987</b>	<b>Drug Therapy N=1096</b>	<b>Adjusted Difference Between Ablation and Drug Therapy (95% CI)</b>
Median (25th, 75th percentile)	4 (1, 8)	5 (2, 9)	
Mean (standard deviation)	5.0 (4.5)	6.0 (5.1)	-1.4 (-2.0 to -0.9)
<b>48 month</b>			
Number of patients contributing	397	282	
Median (25th, 75th percentile)	4 (1, 8)	5 (2, 9)	
Mean (standard deviation)	5.0 (4.7)	5.6 (4.8)	-1.1 (-1.7 to -0.5)
<b>60 month</b>			
Number of patients contributing	266	198	
Median (25th, 75th percentile)	3 (1, 7)	4 (2, 9)	
Mean (standard deviation)	4.6 (4.6)	5.7 (5.1)	-1.5 (-2.2 to -0.7)
<b>All follow-up</b>			
Total questionnaires collected	3522	3018	
Median (25th, 75th percentile)	4 (1, 8)	5 (2, 10)	
Mean (standard deviation)	5.1 (4.6)	6.4 (5.1)	-1.4 (-1.8 to -1.0)

**eTable 15: AFEQT Scores with Adjustment for Site and the Site-Treatment Interaction as Random Effects**

	Catheter Ablation N=1108	Drug Therapy N=1096	Adjusted Difference Between Ablation and Drug Therapy (95% CI)
<b>AFEQT</b>			
Summary Score			
Scale: 0 = complete disability, 100 = no disability			
Baseline			
Number of patients contributing	1084	1078	
Median (25th, 75th percentile)	63 (48, 79)	63 (48, 80)	
Mean (standard deviation)	62.9 (20.5)	63.1 (20.6)	-0.2 (-1.9 to 1.5)
3 month			
Number of patients contributing	971	983	
Median (25th, 75th percentile)	85 (69, 95)	81 (63, 94)	
Mean (standard deviation)	79.8 (18.6)	76.5 (20.4)	3.0 (1.4 to 4.6)
12 month			
Number of patients contributing	915	903	
Median (25th, 75th percentile)	94 (80, 99)	86 (69, 96)	
Mean (standard deviation)	86.4 (16.5)	80.9 (18.5)	5.3 (3.8 to 6.8)
24 month			
Number of patients contributing	856	798	
Median (25th, 75th percentile)	94 (78, 99)	88 (71, 98)	
Mean (standard deviation)	86.6 (16.2)	81.8 (18.9)	4.3 (2.7 to 5.8)
36 month			
Number of patients contributing	645	605	
Median (25th, 75th percentile)	93 (77, 99)	90 (76, 98)	
Mean (standard deviation)	86.1 (15.8)	83.9 (17.3)	2.4 (0.8 to 4.0)
48 month			
Number of patients contributing	476	473	
Median (25th, 75th percentile)	92 (78, 99)	89 (74, 98)	
Mean (standard deviation)	86.2 (15.9)	83.5 (17.7)	2.9 (1.1 to 4.8)
60 month			

	Catheter Ablation N=1108	Drug Therapy N=1096	Adjusted Difference Between Ablation and Drug Therapy (95% CI)
Number of patients contributing	329	320	
Median (25th, 75th percentile)	93 (77, 100)	90 (75, 98)	
Mean (standard deviation)	86.2 (16.2)	83.3 (18.6)	2.5 (0.3 to 4.8)
All follow-up			
Total questionnaires collected	4192	4082	
Median (25th, 75th percentile)	91 (76, 98)	87 (70, 97)	
Mean (standard deviation)	84.8 (17.0)	80.9 (19.0)	3.4 (2.2 to 4.6)

## MAFSI

### Frequency Score

Scale: 0 = no atrial fibrillation, 40 = continuous atrial fibrillation

#### Baseline

Number of patients contributing	1069	1061	
Median (25th, 75th percentile)	11 (7, 16)	11 (7, 16)	
Mean (standard deviation)	11.8 (6.2)	11.9 (6.4)	-0.1 (-0.7 to 0.5)

#### 3 month

Number of patients contributing	897	894	
Median (25th, 75th percentile)	6 (2, 11)	8 (3, 13)	
Mean (standard deviation)	7.3 (5.9)	8.9 (6.5)	-1.5 (-2.1 to -0.9)

#### 12 month

Number of patients contributing	828	831	
Median (25th, 75th percentile)	5 (1, 10)	7 (3, 12)	
Mean (standard deviation)	6.4 (6.0)	8.1 (6.3)	-1.6 (-2.3 to -1.0)

#### 24 month

Number of patients contributing	759	724	
Median (25th, 75th percentile)	5 (1, 10)	7 (3, 12)	
Mean (standard deviation)	6.2 (5.7)	8.0 (6.5)	-1.6 (-2.2 to -0.9)

#### 36 month

Number of patients contributing	571	559	
Median (25th, 75th percentile)	5 (2, 10)	6 (2, 12)	
Mean (standard deviation)	6.4 (5.9)	7.5 (6.4)	-1.1 (-1.8 to -0.4)



	Catheter Ablation N=1108	Drug Therapy N=1096	Adjusted Difference Between Ablation and Drug Therapy (95% CI)
48 month			
Number of patients contributing	424	419	
Median (25th, 75th percentile)	5 (1, 10)	6 (2, 11)	
Mean (standard deviation)	6.5 (6.1)	7.1 (6.2)	-0.7 (-1.5 to 0.1)
60 month			
Number of patients contributing	279	295	
Median (25th, 75th percentile)	4 (1, 9)	5 (2, 10)	
Mean (standard deviation)	5.8 (5.7)	7.0 (6.3)	-1.2 (-2.0 to -0.3)
All follow-up			
Number of patients contributing	3758	3722	
Median (25th, 75th percentile)	5 (2, 10)	7 (3, 12)	
Mean (standard deviation)	6.5 (5.9)	8.0 (6.4)	-1.3 (-1.8 to -0.8)

### Severity Score

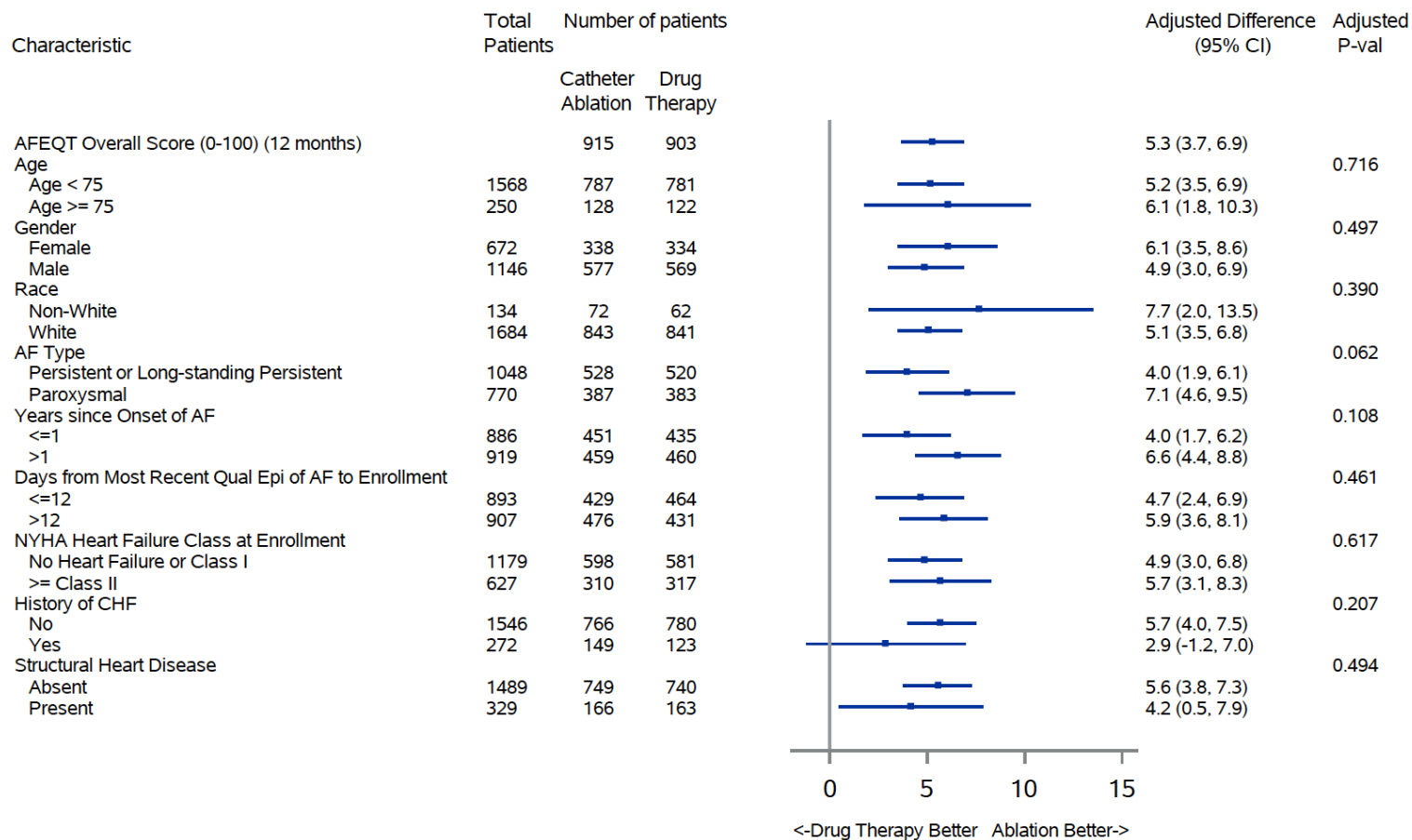
Scale: 0 = mild symptoms, 30 = extreme symptoms

#### Baseline

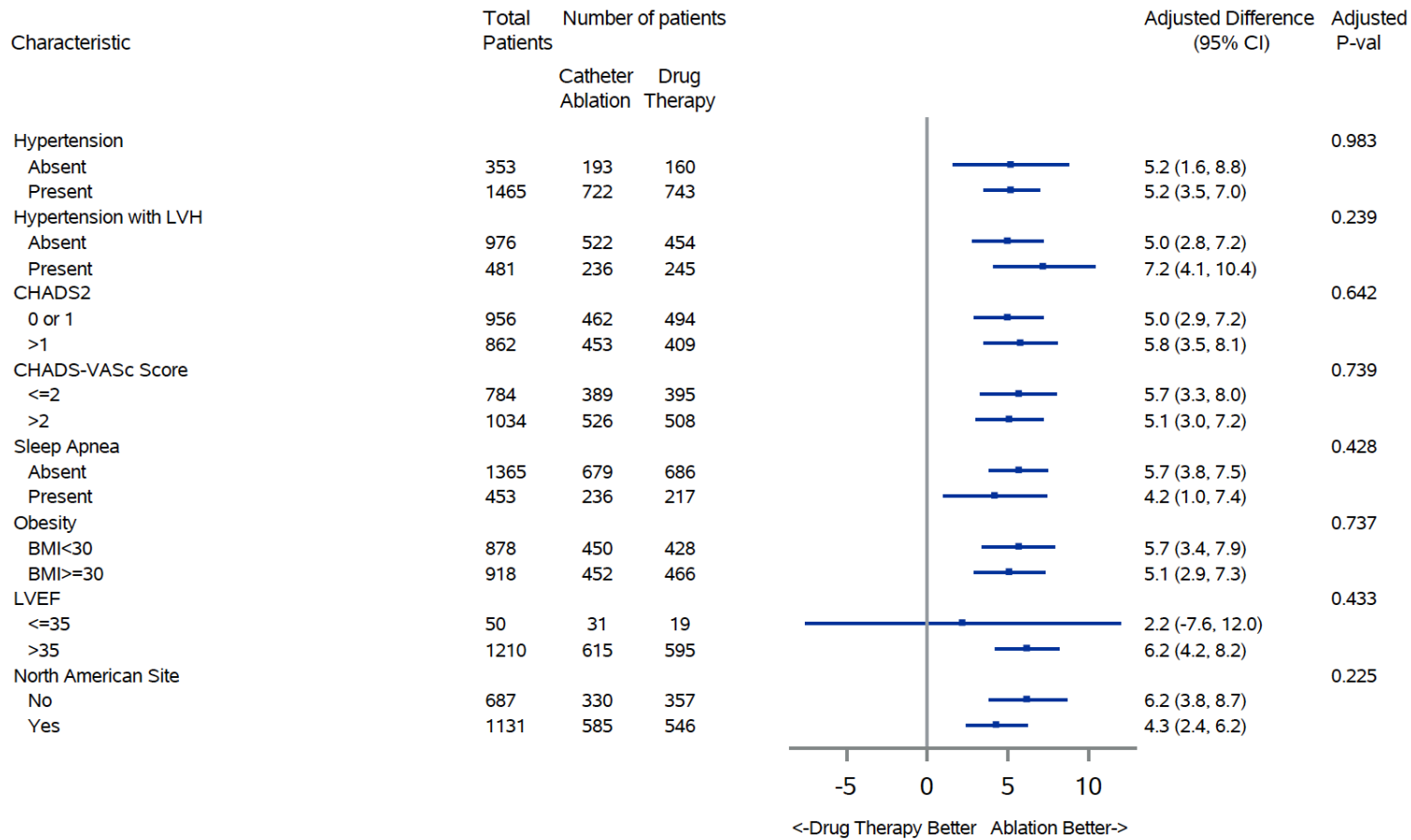
Number of patients contributing	1066	1056	
Median (25th, 75th percentile)	9 (6, 13)	9 (5, 13)	
Mean (standard deviation)	9.3 (4.9)	9.3 (5.1)	-0.0 (-0.5 to 0.4)
3 month			
Number of patients contributing	891	892	
Median (25th, 75th percentile)	5 (2, 9)	6 (3, 11)	
Mean (standard deviation)	5.8 (4.7)	7.0 (5.2)	-1.3 (-1.8 to -0.8)
12 month			
Number of patients contributing	827	830	
Median (25th, 75th percentile)	4 (1, 8)	5 (2, 10)	
Mean (standard deviation)	5.0 (4.7)	6.5 (5.1)	-1.5 (-2.0 to -1.0)
24 month			
Number of patients contributing	757	722	
Median (25th, 75th percentile)	4 (1, 8)	5 (2, 9)	
Mean (standard deviation)	4.9 (4.5)	6.2 (5.1)	-1.2 (-1.7 to -0.7)
36 month			

	<b>Catheter Ablation N=1108</b>	<b>Drug Therapy N=1096</b>	<b>Adjusted Difference Between Ablation and Drug Therapy (95% CI)</b>
Number of patients contributing	569	559	
Median (25th, 75th percentile)	4 (1, 8)	5 (2, 9)	
Mean (standard deviation)	5.0 (4.5)	5.8 (5.0)	-0.9 (-1.4 to -0.4)
<b>48 month</b>			
Number of patients contributing	423	419	
Median (25th, 75th percentile)	4 (1, 8)	5 (2, 9)	
Mean (standard deviation)	5.0 (4.7)	5.5 (4.8)	-0.7 (-1.2 to -0.1)
<b>60 month</b>			
Number of patients contributing	279	295	
Median (25th, 75th percentile)	3 (1, 7)	4 (2, 8)	
Mean (standard deviation)	4.6 (4.7)	5.6 (4.9)	-0.9 (-1.6 to -0.3)
<b>All follow-up</b>			
Number of patients contributing	3746	3717	
Median (25th, 75th percentile)	4 (1, 8)	5 (2, 9)	
Mean (standard deviation)	5.1 (4.7)	6.3 (5.1)	-1.1 (-1.5 to -0.7)

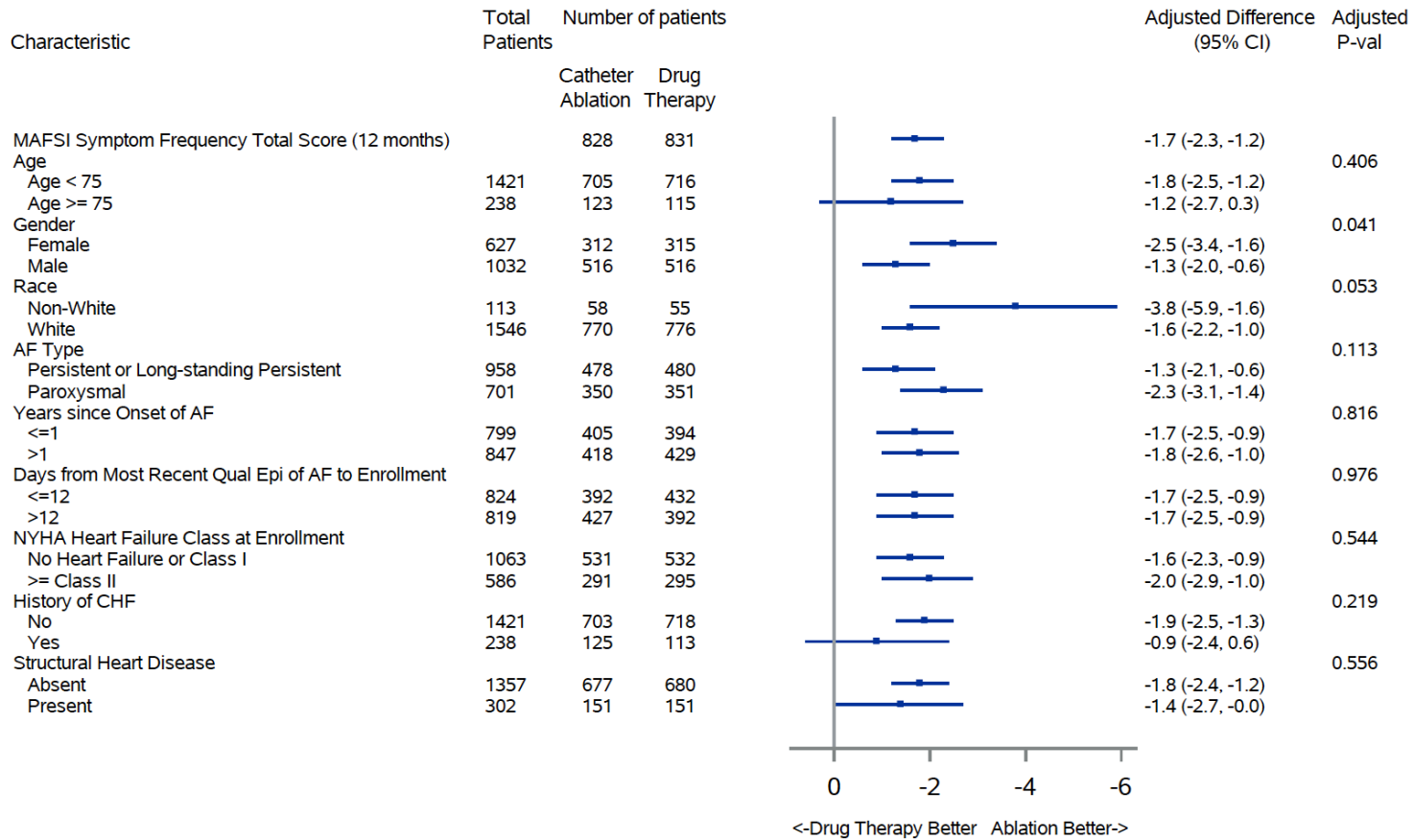
**eFigure 2: AFEQT Summary Score in Pre-Specified Subgroups in the CABANA Trial by Intention-to-Treat**



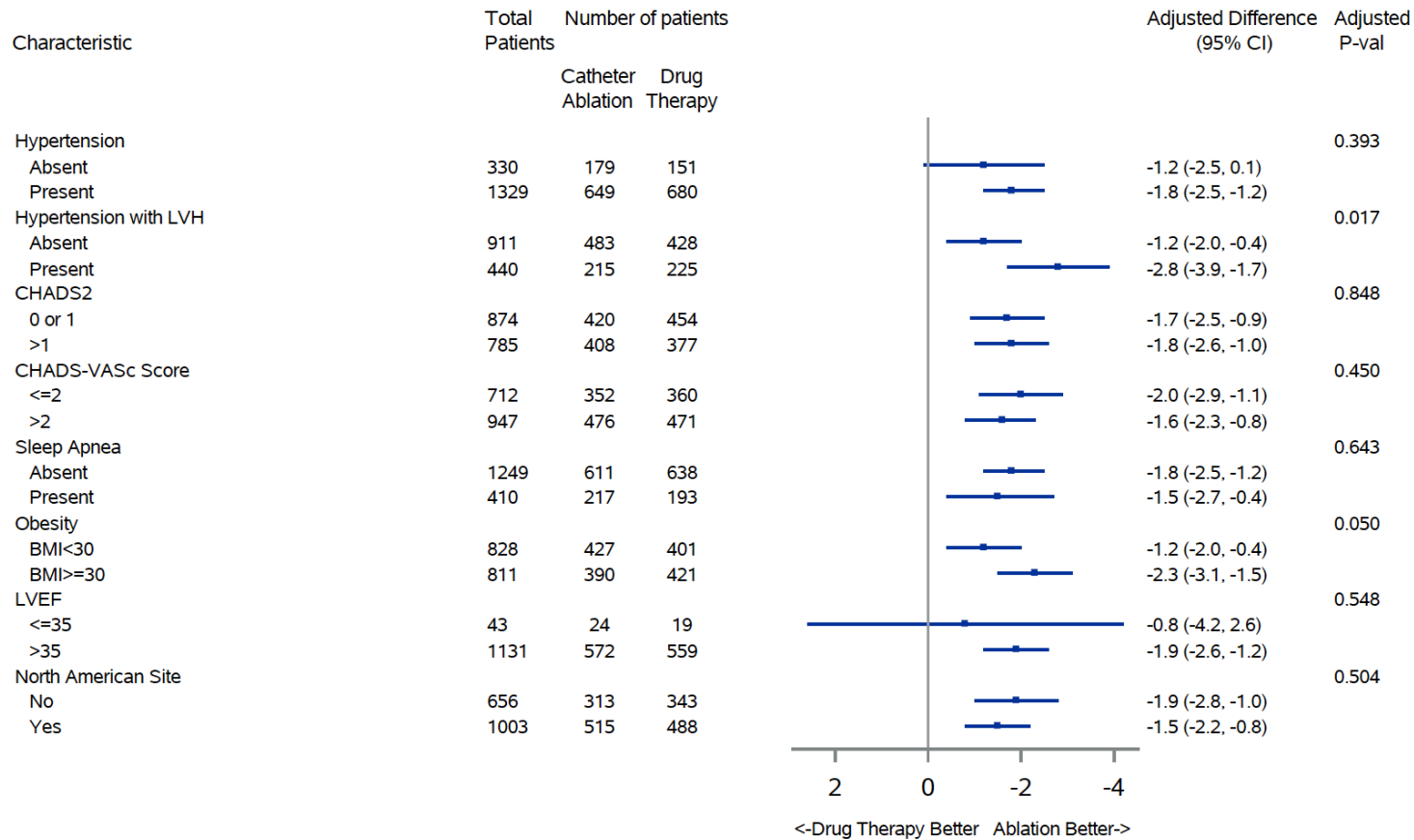
**eFigure 2 (continued): AFEQT Summary Score in Pre-Specified Subgroups in the CABANA Trial by Intention-to-Treat**



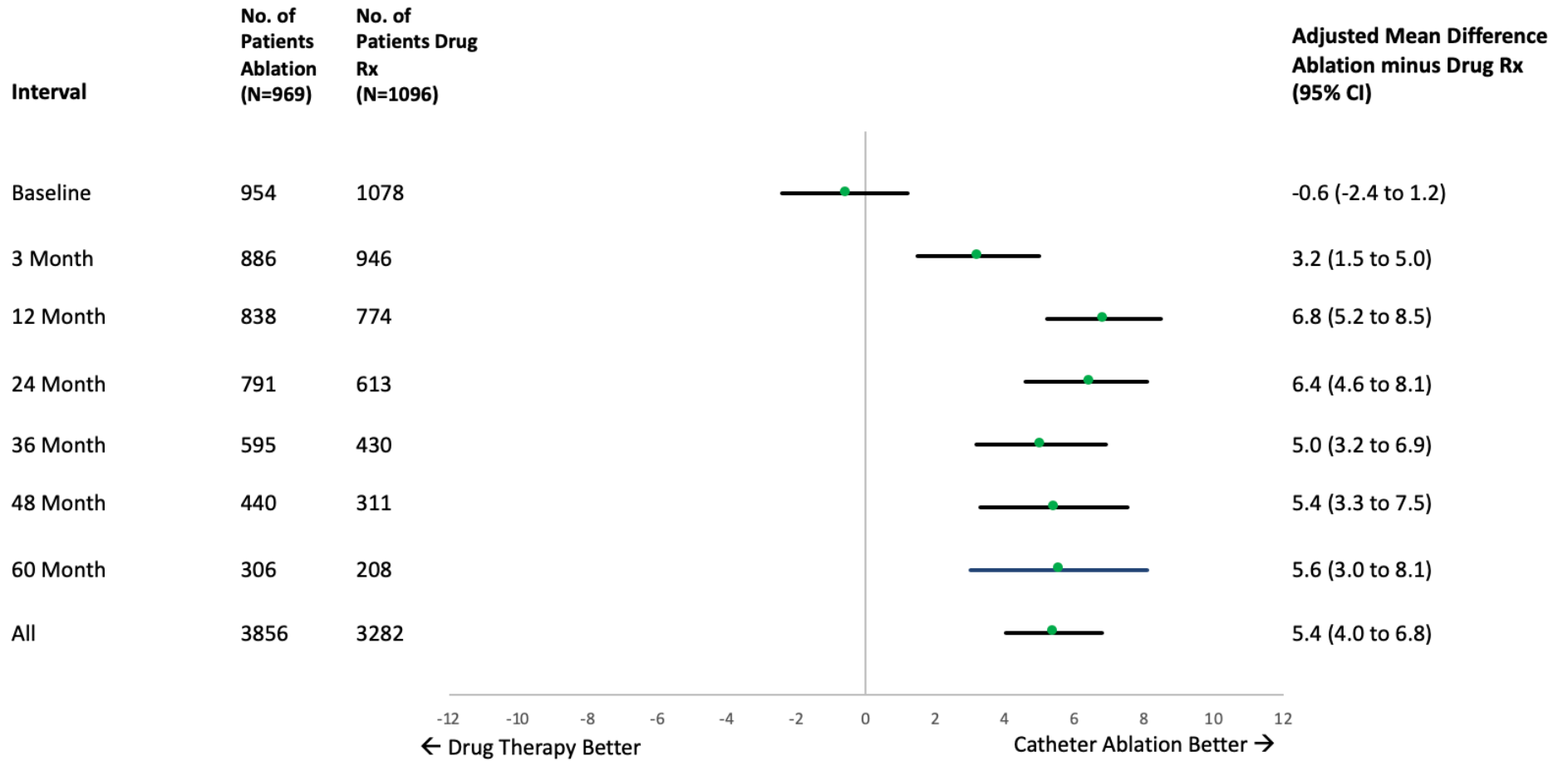
**eFigure 3: MAFSI Frequency Score in Pre-Specified Subgroups in the CABANA Trial by Intention-to-Treat**



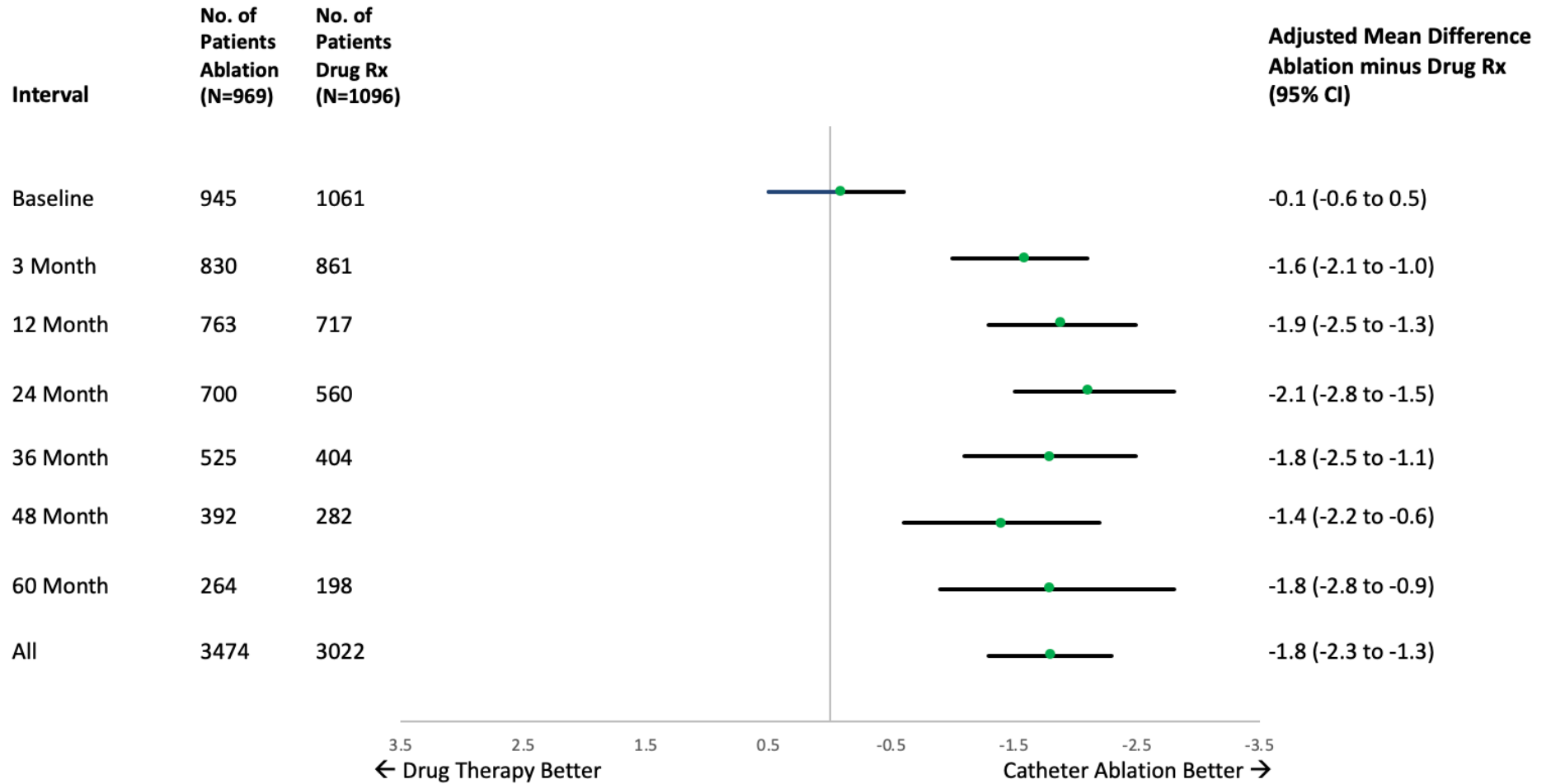
**eFigure 3 (continued): MAFSI Frequency Score in Pre-Specified Subgroups in the CABANA Trial by Intention-to-Treat**



**eFigure 4: AFEQT Summary Scores in the 6-Month Per Protocol Analysis**

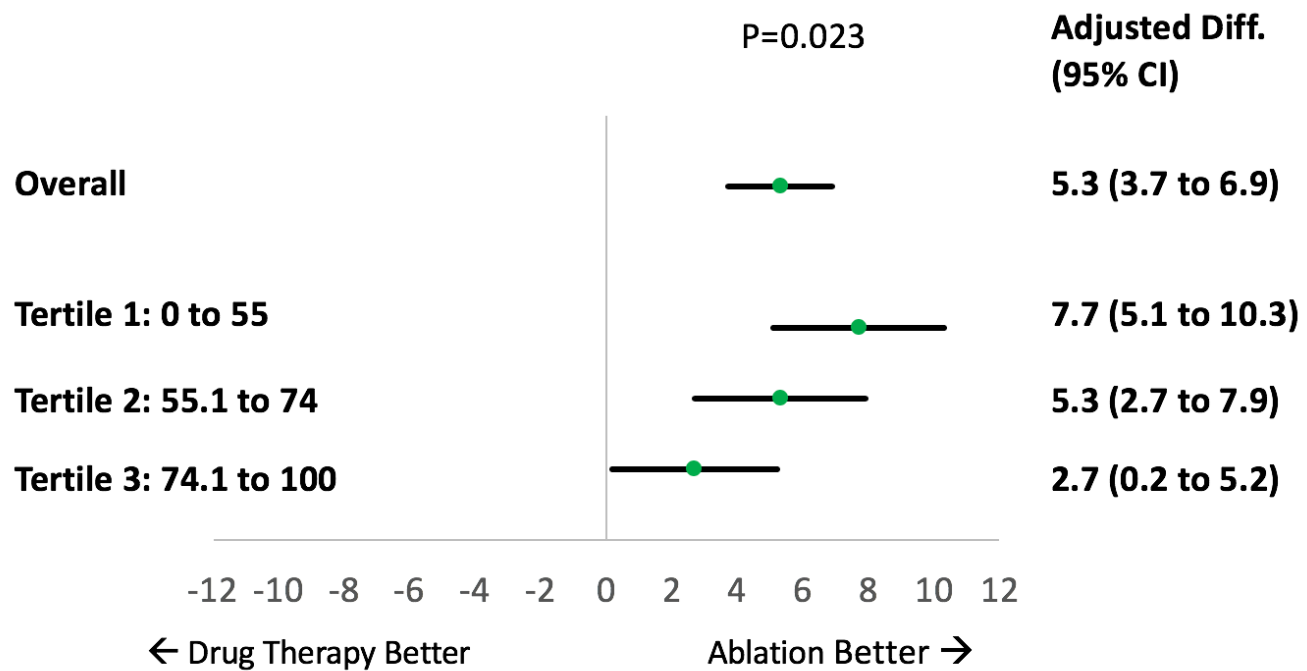


eFigure 5: MAFSI Frequency Scores in the 6-Month Per Protocol Analysis

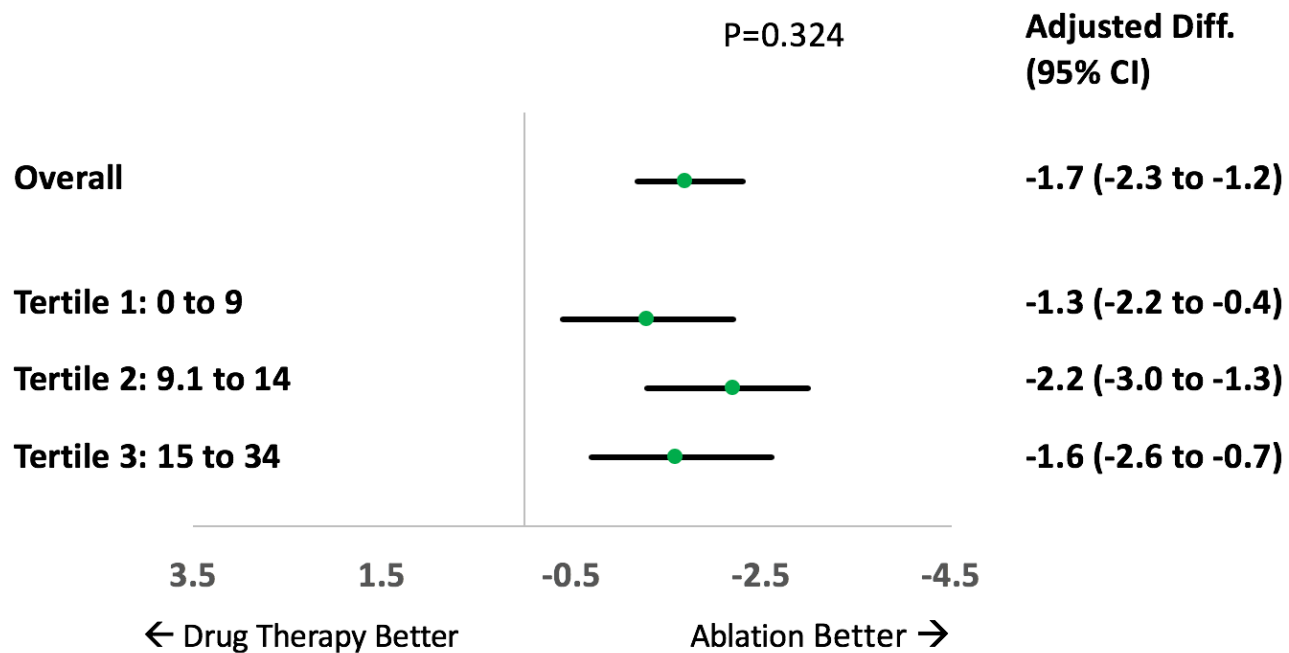




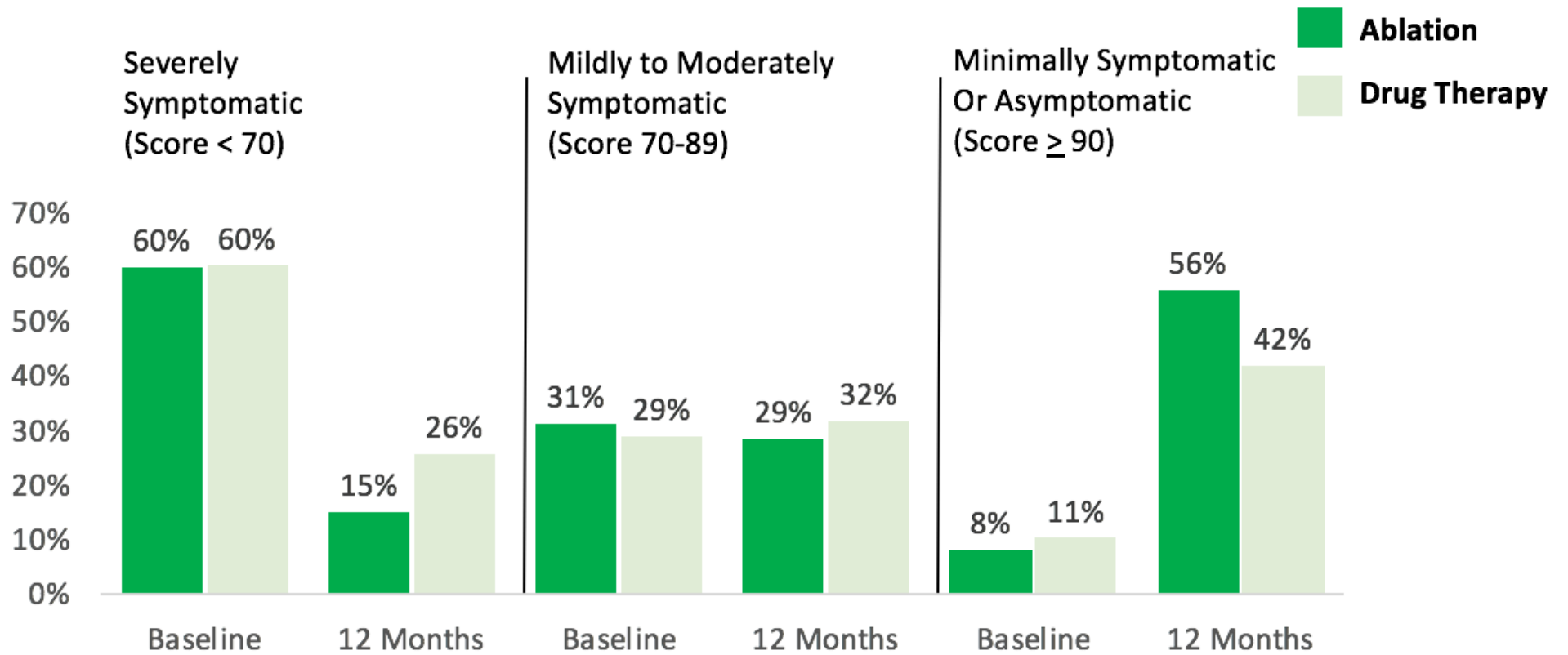
eFigure 6: AFEQT Scores by Baseline Tertiles in the CABANA Trial by Intention-to-Treat



eFigure 7: MAFSI Scores by Baseline Tertiles in the CABANA Trial by Intention-to-Treat

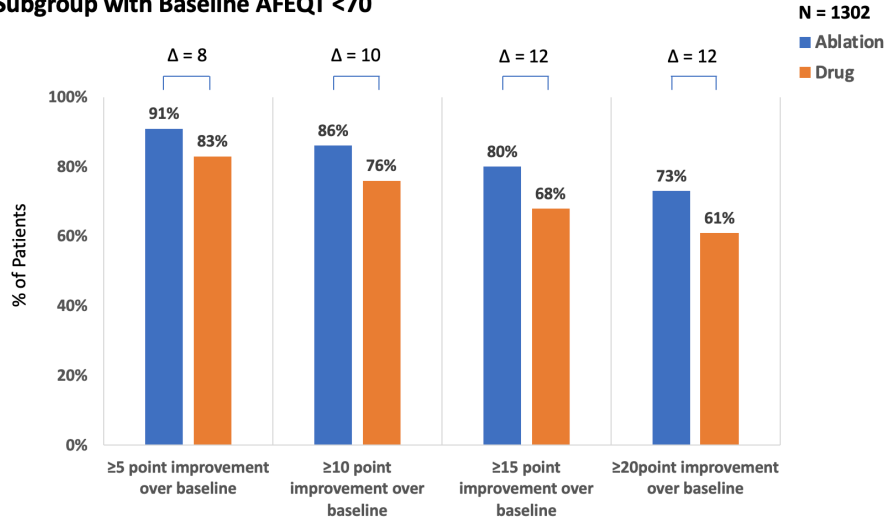


eFigure 8: AFEQT Summary Score Illustrative Changes in the CABANA Trial

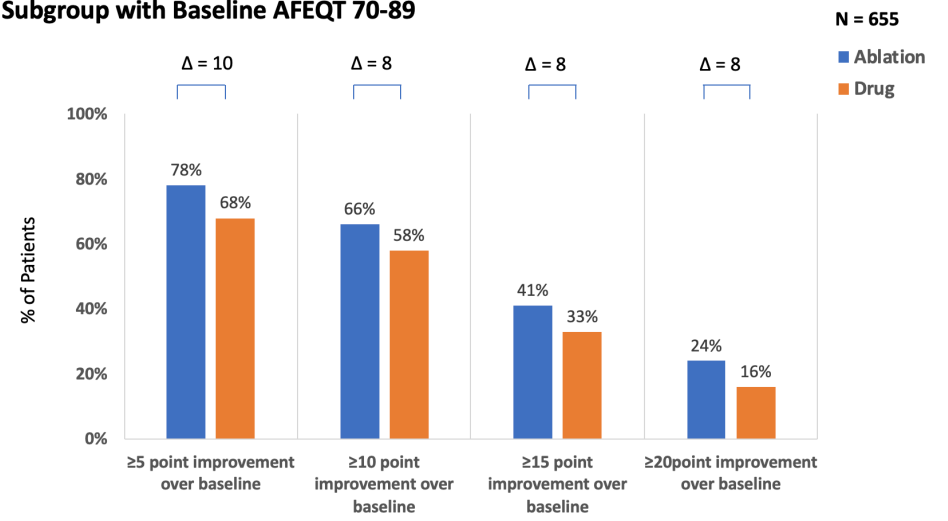


**eFigure 9: AFEQT Summary Score Responder Analysis in the CABANA Trial**

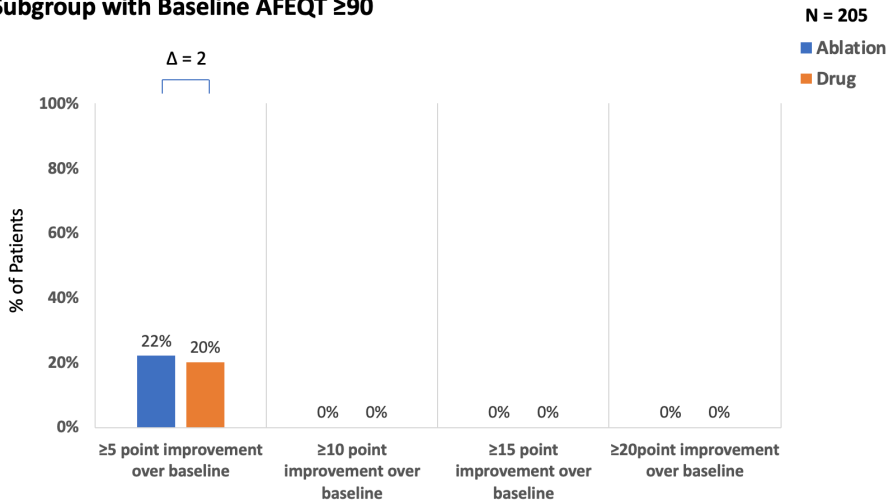
**Responder Analysis for 12-Month AFEQT Summary Score:  
Subgroup with Baseline AFEQT <70**



**Responder Analysis for 12-Month AFEQT Summary Score:  
Subgroup with Baseline AFEQT 70-89**



**Responder Analysis for 12-Month AFEQT Summary Score:  
Subgroup with Baseline AFEQT ≥90**



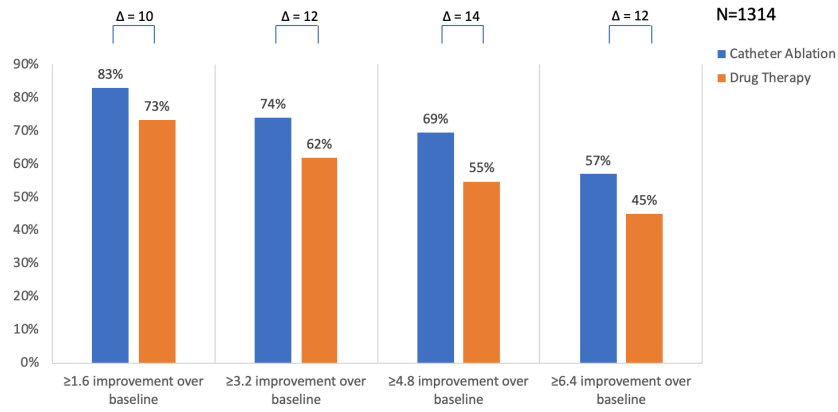
## MAFSI Frequency Score Responder Analysis

We performed a “responder” analysis for the 12-month MAFSI Frequency Score, starting by dividing the MAFSI scores post hoc into categories representing severely symptomatic from AF (MAFSI Frequency Score >9), mildly to moderately symptomatic from AF (MAFSI Frequency Score 4-9), and minimal symptoms to asymptomatic from AF (MAFSI Frequency Score <4). For each of these categories, we examined change (“responder”) scores (12 month minus baseline, correcting for the fact that an improvement in MAFSI is a negative number due to the way it is scaled – worst value is largest, best value is smallest).

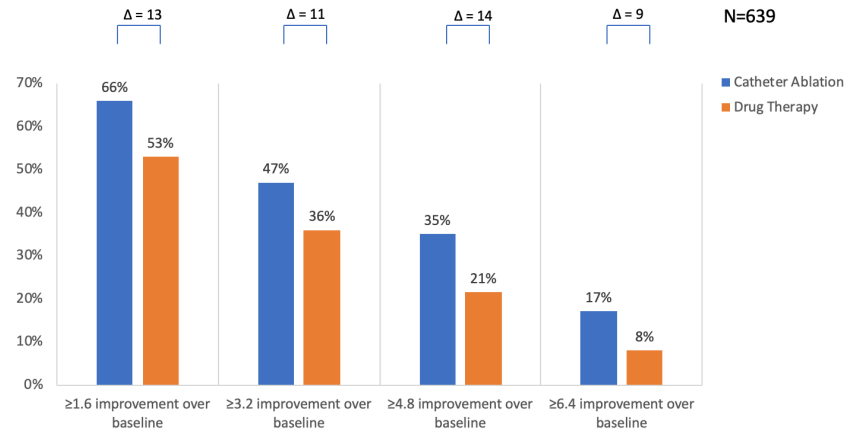
Using the baseline MAFSI Frequency Score standard deviation (SD) (~ 6 MAFSI points), we looked at the ITT treatment group differences for  $\frac{1}{4}$  SD ( $\geq 1.5$  points),  $\frac{1}{2}$  SD ( $\geq 3$  points),  $\frac{3}{4}$  SD ( $\geq 4.5$  points), and 1 SD ( $\geq 6$  points). As shown in the figure below (eFigure 9), for the severely symptomatic group (baseline MAFSI >9), the incremental number of responders for ablation relative to drug therapy was greater with the more stringent definitions of “responder” (14 per 100 extra responders using  $\frac{3}{4}$  to 1 SD – clearly a large improvement at the patient level). A similar pattern was seen for patients with baseline MAFSI Frequency Scores in the mild to moderately symptomatic category. In the subgroup with minimal AF symptoms at baseline, an advantage for ablation was only seen with the  $\frac{1}{4}$  SD benchmark ( $\geq 1.5$  MAFSI points), due to the ceiling effect of the instrument.

## eFigure 10: MAFSI Frequency Score Responder Analysis in the CABANA Trial

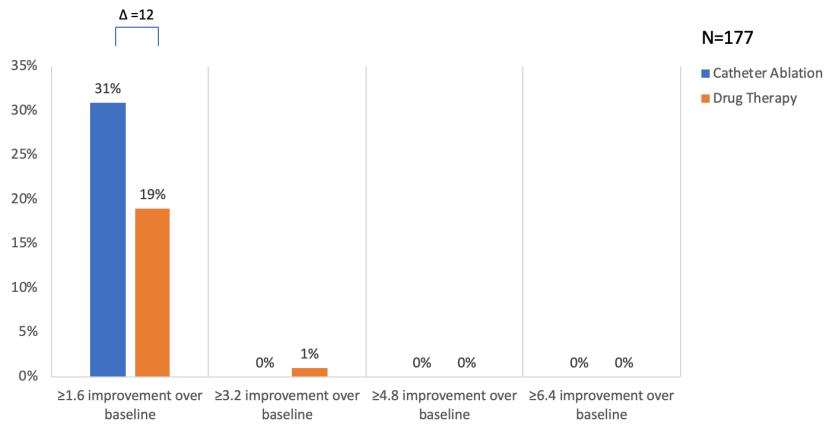
Responder Analysis for 12-Month MAFSI Frequency Score:  
Subgroup with Baseline MAFSI >9



Responder Analysis for 12-Month MAFSI Frequency Score:  
Subgroup with Baseline MAFSI 4-9



Responder Analysis for 12-Month MAFSI Frequency Score:  
Subgroup with Baseline MAFSI <4



## Supplement References

1. Hlatky MA, Boineau RE, Higginbotham MB, et al. A brief self-administered questionnaire to determine functional capacity (the Duke Activity Status Index). *Am J Cardiol.* 1989;64(10):651-654.
2. Mark DB, Anstrom KJ, Sheng S, et al. Quality-of-Life Outcomes With Anatomic Versus Functional Diagnostic Testing Strategies in Symptomatic Patients With Suspected Coronary Artery Disease: Results From the PROMISE Randomized Trial. *Circulation.* 2016;133(21):1995-2007.
3. Dorian P, Paquette M, Newman D, et al. Quality of life improves with treatment in the Canadian Trial of Atrial Fibrillation. *Am Heart J.* 2002;143(6):984-990.
4. Dorian P, Burk C, Mullin CM, et al. Interpreting changes in quality of life in atrial fibrillation: how much change is meaningful? *Am Heart J.* 2013;166(2):381-387 e388.
5. Ware J, Jr., Snow KK, Kosinski M, Gandek B. *SF-36 Health Survey: Manual & Interpretation Guide.* Boston: The Health Institute, New England Medical Center; 1993.
6. EuroQol--a new facility for the measurement of health-related quality of life. The EuroQol Group. *Health Policy.* 1990;16(3):199-208.
7. Koopman C, Pelletier KR, Murray JF, et al. Stanford presenteeism scale: health status and employee productivity. *J Occup Environ Med.* 2002;44(1):14-20.
8. Reilly MC, Zbrozek AS, Dukes EM. The validity and reproducibility of a work productivity and activity impairment instrument. *Pharmacoeconomics.* 1993;4(5):353-365.