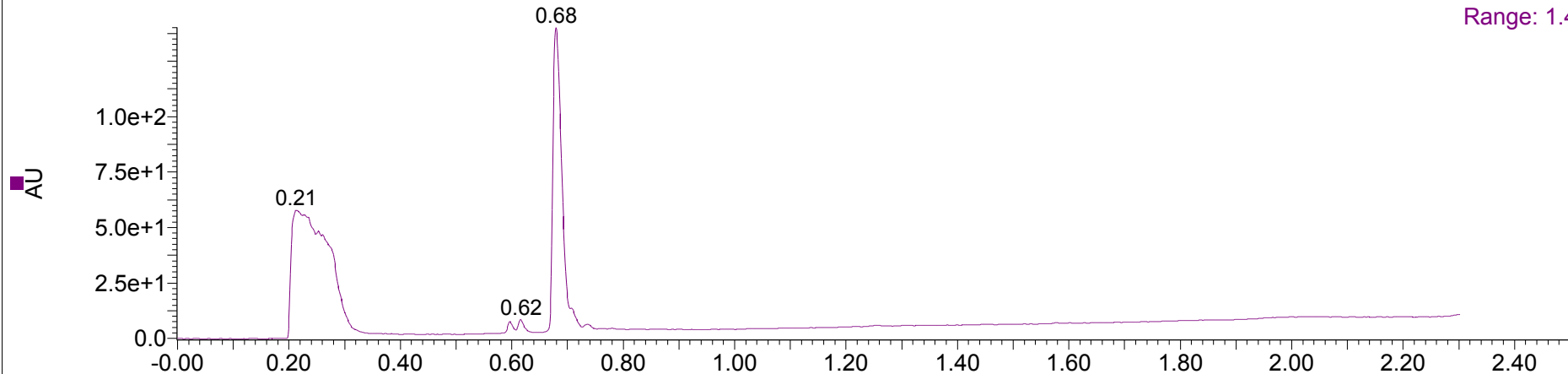


05-Nov-2018 14:37:18

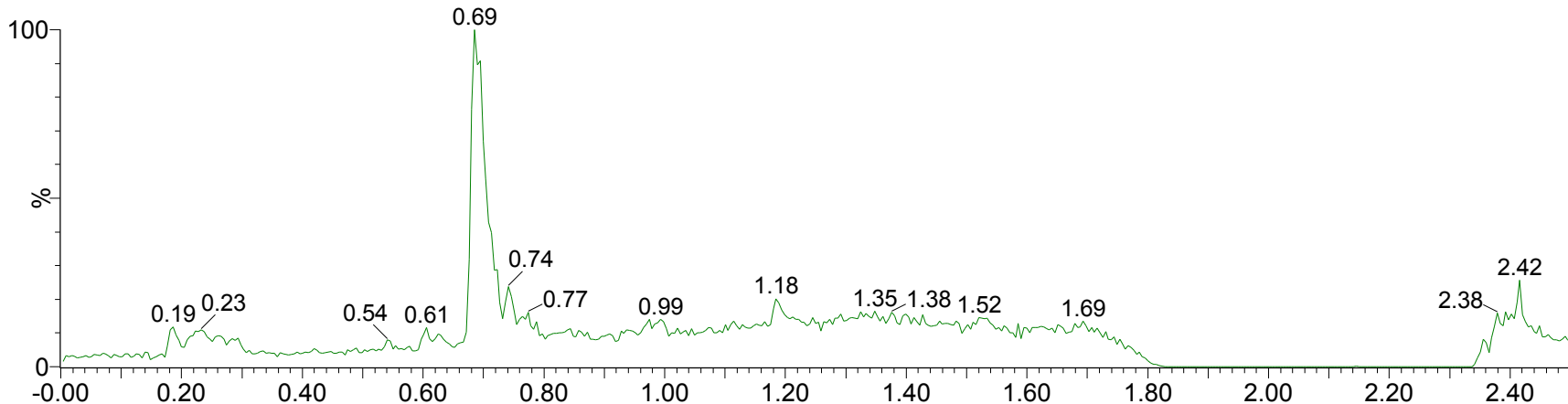
QC-01-175-1

3: Diode Array
Range: 1.403e+2



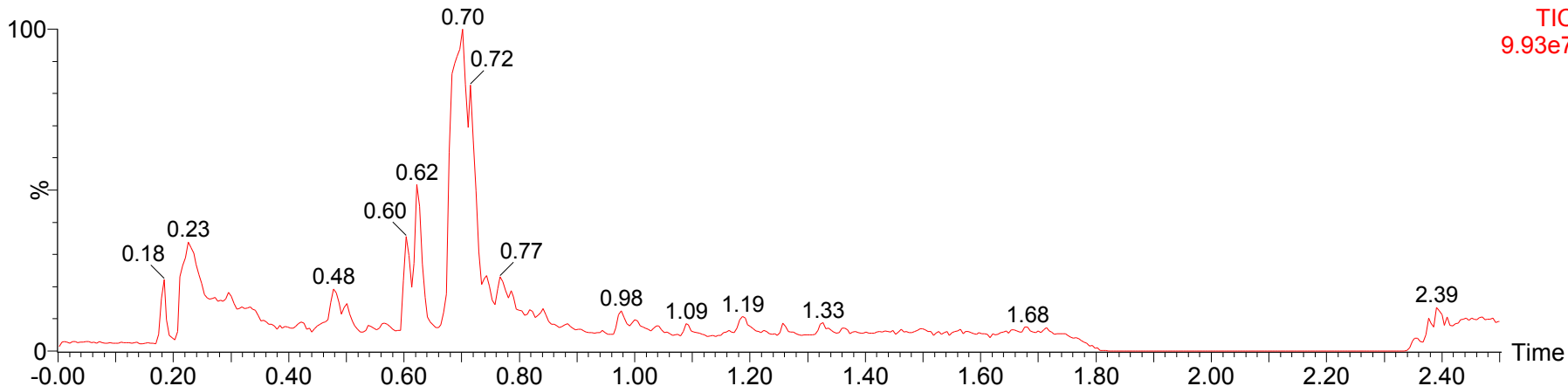
QC-01-175-1

2: Scan ES-
TIC
4.71e6



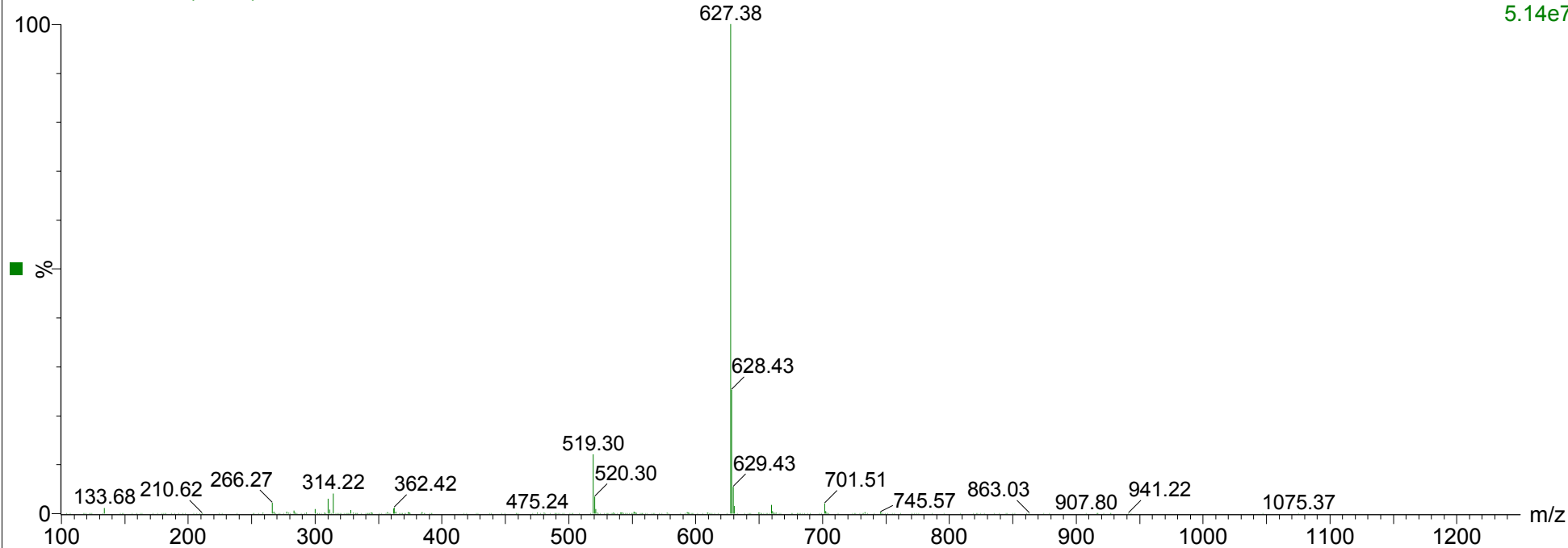
QC-01-175-1

1: Scan ES+
TIC
9.93e7



QC-01-175-1 149 (0.692)

1: Scan ES+
5.14e7



QC-01-175-1 151 (0.704)

2: Scan ES-
1.16e6

