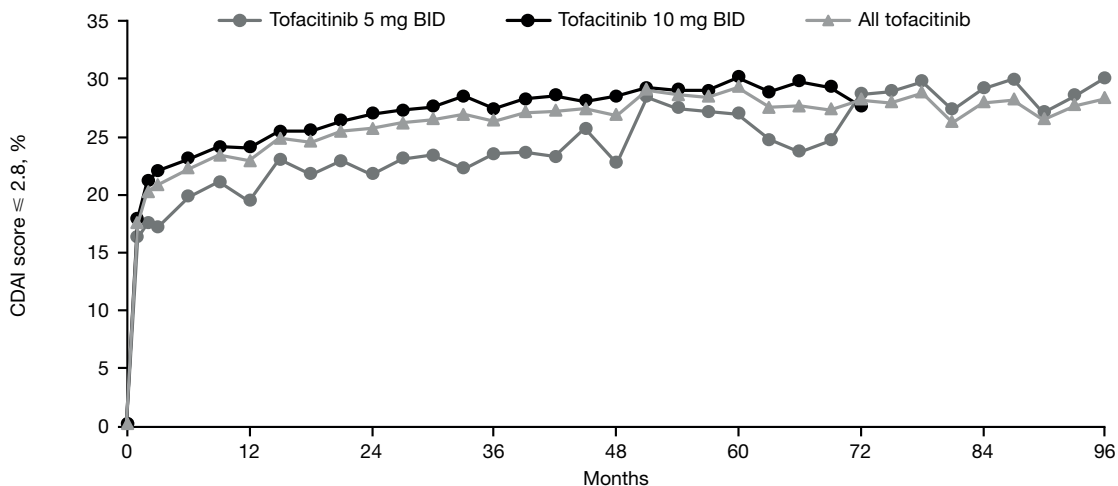
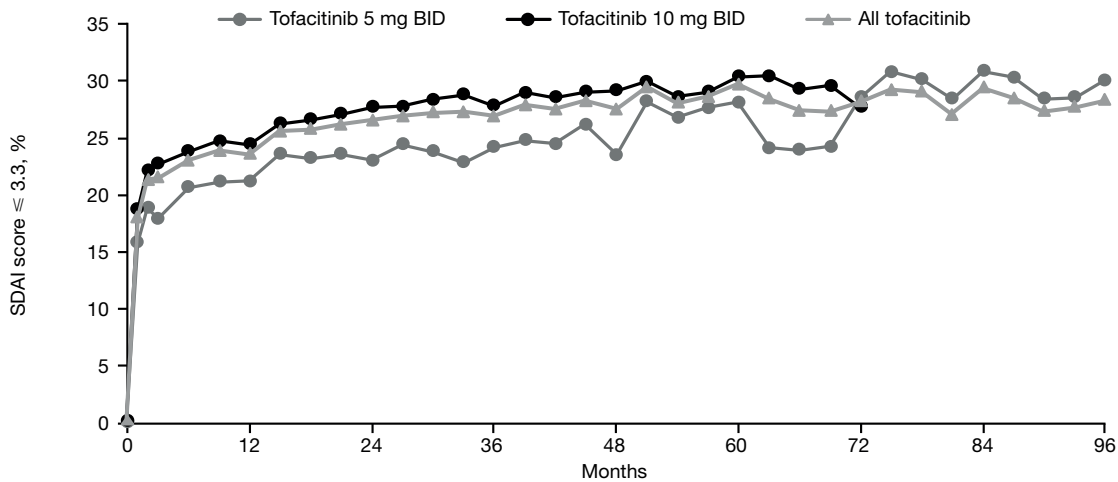


a

	0	12	24	36	48	60	72	84	96
5 mg, N =	1075	971	822	727	580	408	338	271	143
10 mg, N =	3284	2883	2453	2144	1474	915	286		
All, N =	4359	3854	3275	2871	2054	1323	624	315	159

n/N (%)	BL	1	12	24	36	48	60	72	84	96
Tofacitinib 5 mg BID	2/1116 (0.2)	175/1075 (16.3)	189/971 (19.5)	179/822 (21.8)	171/727 (23.5)	132/580 (22.8)	110/408 (27.0)	97/338 (28.7)	79/271 (29.2)	43/143 (30.1)
Tofacitinib 10 mg BID	7/3308 (0.2)	589/3284 (17.9)	693/2883 (24.0)	662/2453 (27.0)	587/2144 (27.4)	420/1474 (28.5)	276/915 (30.2)	79/286 (27.6)	9/44 (20.5)	2/16 (12.5)
All tofacitinib	9/4424 (0.2)	764/4359 (17.5)	882/3854 (22.9)	841/3275 (25.7)	758/2871 (26.4)	552/2054 (26.9)	386/1323 (29.2)	176/624 (28.2)	88/315 (27.9)	45/159 (28.3)

b

	0	12	24	36	48	60	72	84	96
5 mg, N =	1061	961	811	724	578	405	336	269	143
10 mg, N =	3219	2869	2449	2135	1462	909	285		
All, N =	4280	3830	3260	2859	2040	1314	621	313	159

n/N (%)	BL	1	12	24	36	48	60	72	84	96
Tofacitinib 5 mg BID	1/1105 (0.1)	168/1061 (15.8)	204/961 (21.2)	187/811 (23.1)	175/724 (24.2)	136/578 (23.5)	114/405 (28.2)	96/336 (28.6)	83/269 (30.9)	43/143 (30.1)
Tofacitinib 10 mg BID	7/3301 (0.2)	603/3219 (18.7)	700/2869 (24.4)	678/2449 (27.7)	594/2135 (27.8)	426/1462 (29.1)	276/909 (30.4)	79/285 (27.7)	9/44 (20.5)	2/16 (12.5)
All tofacitinib	8/4406 (0.2)	771/4280 (18.0)	904/3830 (23.6)	865/3260 (26.5)	769/2859 (26.9)	562/2040 (27.6)	390/1314 (29.7)	175/621 (28.2)	92/313 (29.4)	45/159 (28.3)