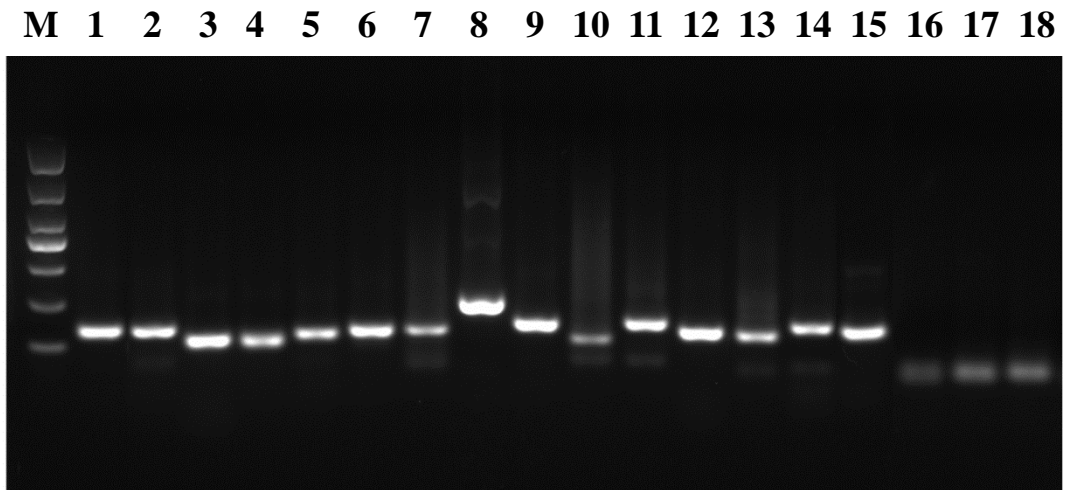


**Figure S1. The melting curves of candidate reference genes.**



**Figure S2. The PCR amplification specificities of candidate reference genes detected by agarose gel electrophoresis.**

M, D2000 marker; 1, *ACT7*; 2, *EIF4A*; 3, *GAPDH*; 4, *Histone*; 5, *PP2A-2*; 6, *PP2A-A2*; 7, *RPS18*; 8, *UBQ10*; 9, *ATPase*; 10, *UBP*; 11, *bHLH*; 12, *DNAJ*; 13, *U6-1*; 14, *U6-2*; 15, *5.8s*; 16, miR171; 17, miR482; 18, miR403.