

Magnetic storms disrupt nocturnal migratory activity in songbirds

Giuseppe Bianco, Mihaela Ilieva and Susanne Åkesson

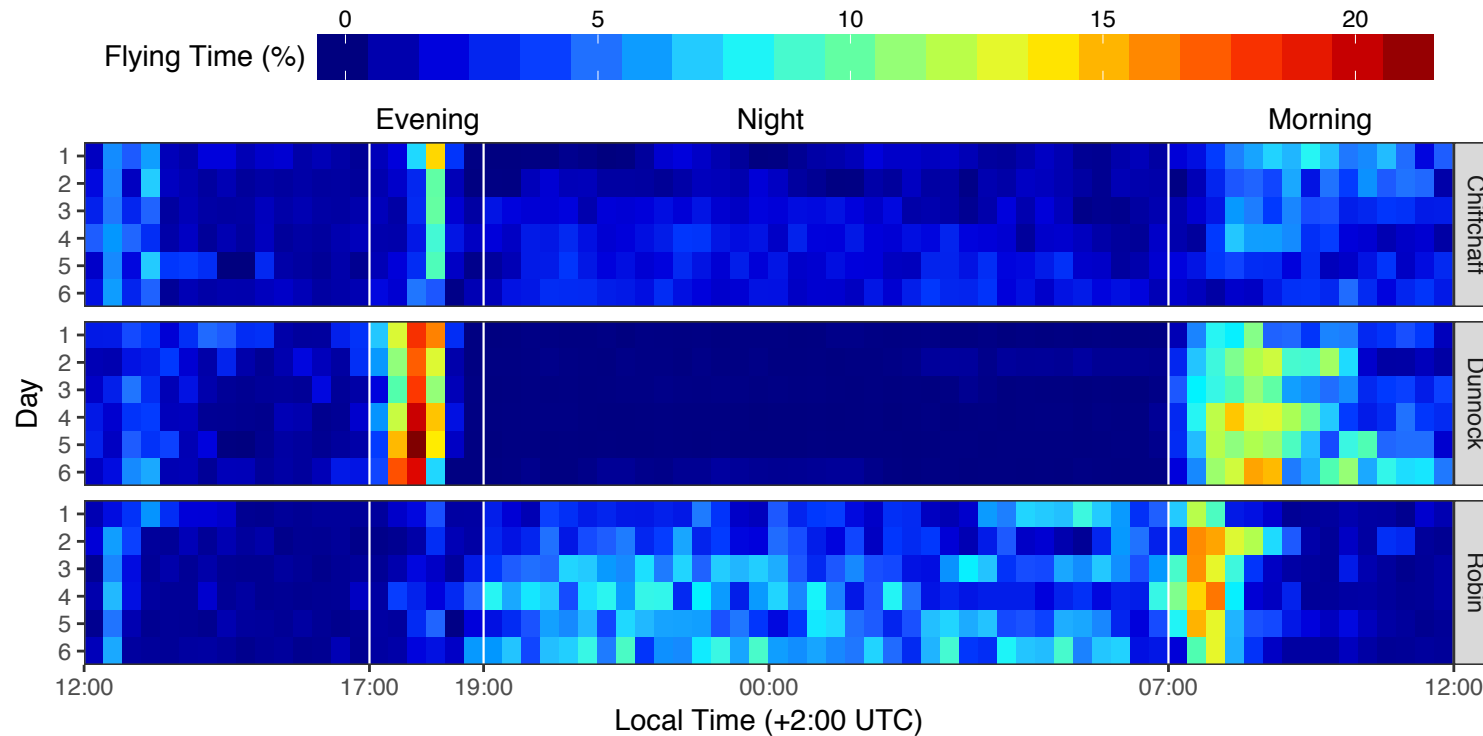


Figure S2. Actogram for three species of first-year migratory songbirds video-recorded during their migratory period. Each horizontal line shows the mean time spent in flying mode by 24 birds ($n=8$ for each species) during 24h period (from 12:00 to 12:00 of the following day) in 20-min intervals. Birds were considered active if spending more than 1% of the 20-min time interval in flying mode. White vertical lines delineate selected time periods used in the analysis (Evening, Night and Morning).