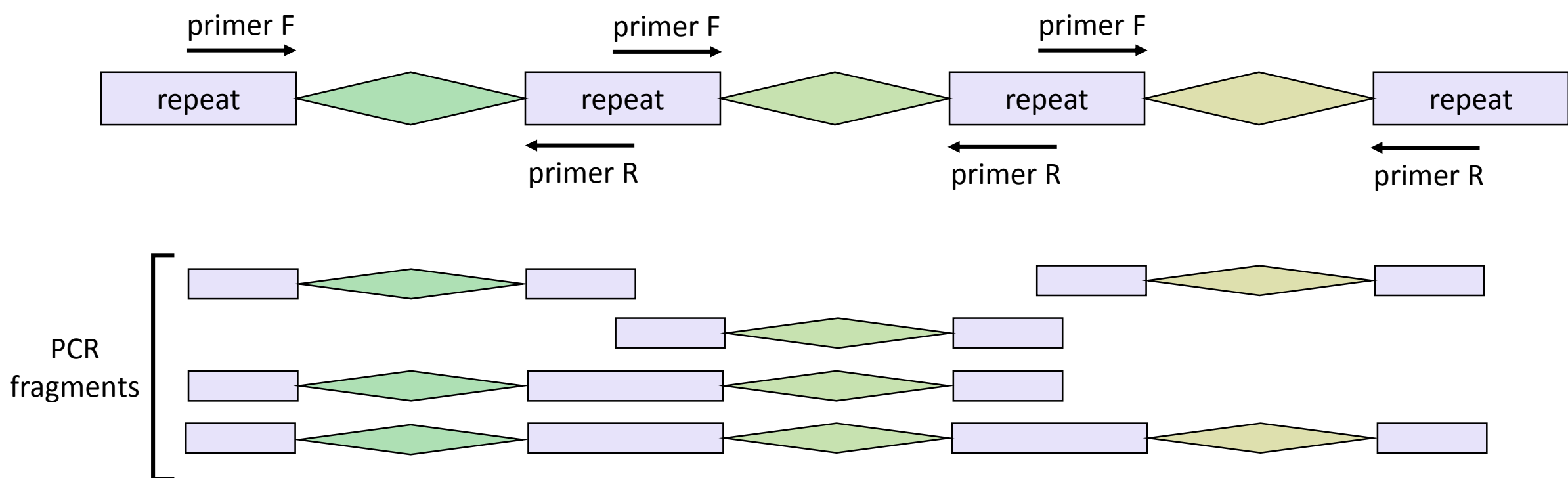
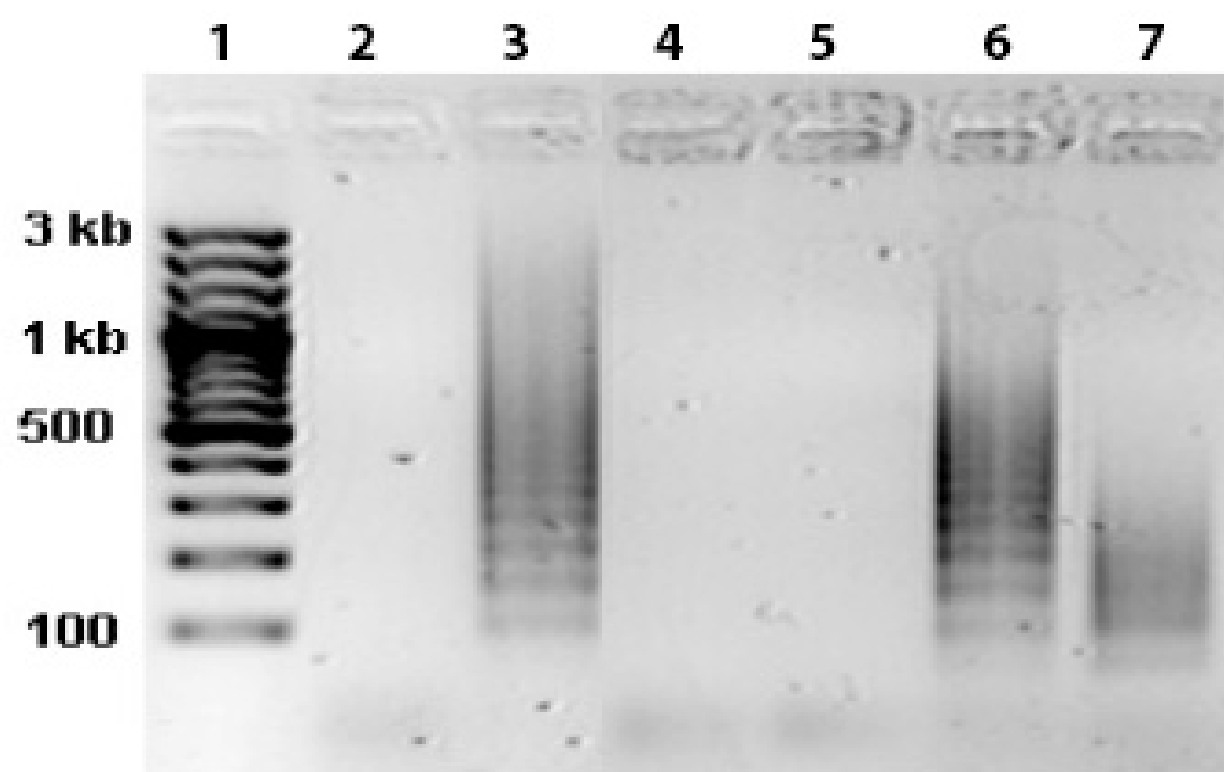


A.



B.



A. A strategy used to amplify spacers associated with *Thermus* CRISPR repeats from environmental samples.

B. An agarose gel showing the results of separation of products of PCR amplification with primers specific to *Thermus* I-E type CRISPR repeat using the following DNA as amplification template.

lane 2 - negative control, no input DNA;

lane 3 - *T. thermophilus* HB8 genomic DNA;

lane 4 - *Thermas del Flaco* sample 1, no enrichment;

lane 5 - *Thermas del Flaco* sample 2, no enrichment;

lane 6 - *Thermas del Flaco* sample 1, enrichment culture;

lane 7 - *Thermas del Flaco* sample 2, enrichment culture.

lane 1 is a DNA molecular weight marker.