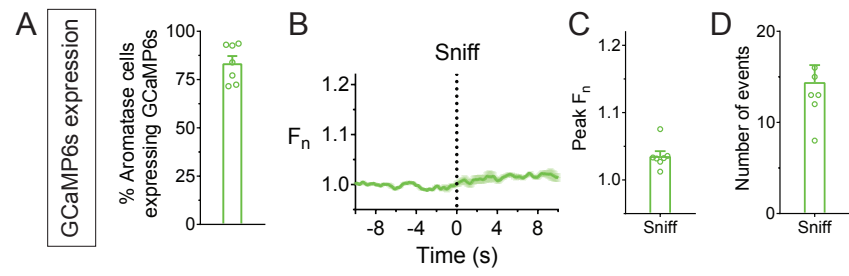
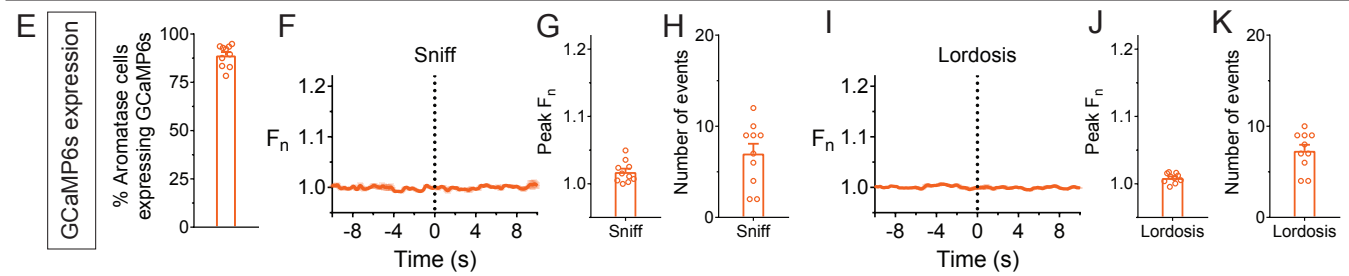


Figure S2

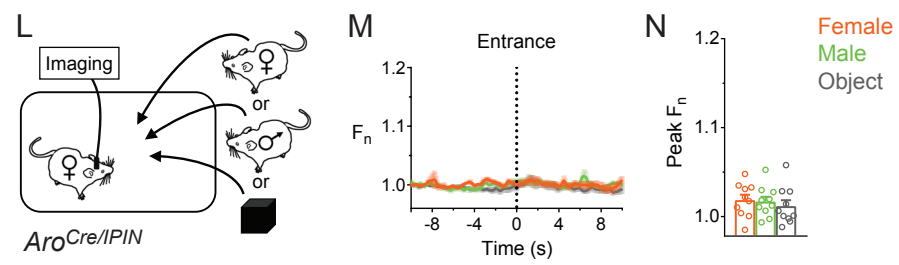
In sexually naive males, neurons do not respond to sniffs subsequent to early investigation of females



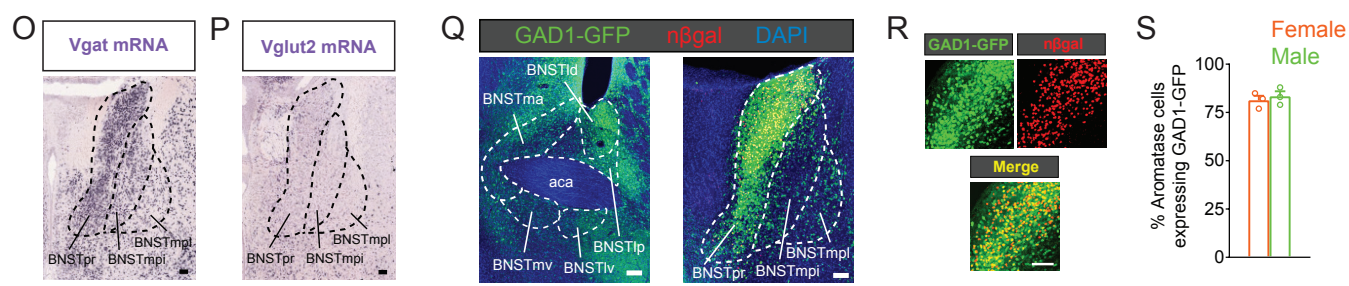
In sexually naive receptive females, neurons do not respond to sniffs or lordosis behavior



In receptive females, neurons do not respond to intruders of either sex



Most neurons in the BNST are GABAergic



In sexually naive receptive females, Vgat+ neurons in and around the BNST respond during mating

