

Colon pathology in SMA mice

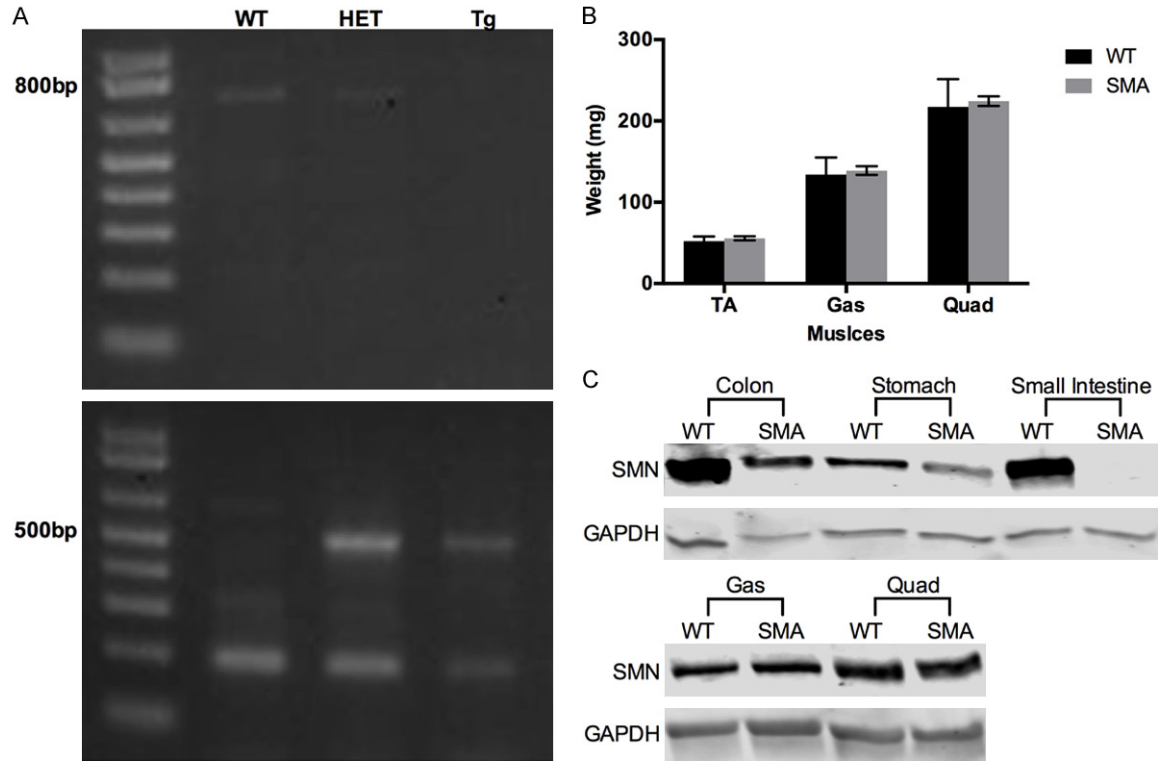


Figure S1. A. In genotype, the functional *SMN* is 800 bp length DNA, the mutated *Smn* is 500 bp length. B. The weights in specific muscles of tibialis (TA) (52.10 ± 5.738 mg N=4 vs 55.625 ± 2.616 mg N=8, $P=0.997$) gastrocnemius (Gas) (134.15 ± 20.935 mg N=4 vs 138.9725 ± 5.459268 mg 4=N, $P=0.995$) and quadriceps femoris (Quad) (217.33 ± 34.139 mg N=4 vs 224.38 ± 5.933 mg N=4, $P=0.984$) had no difference between WT and SMA. C. SMA mice had lower or even deleted expression level of SMN protein in GI tissues, such as colon, stomach and small intestine, compared to WT. But SMA mice were found having leaky expression from the *PrP92-SMN* transgene, outside of the neuronal compartment, especially in gastrocnemius (Gas) quadriceps femoris (Quad) and etc.