

Supplementary Online Content

Sun, A, Wu, C, Wong, SJ, et al. Prophylactic cranial irradiation vs observation in patients with locally advanced non–small cell lung cancer: a long-term update of the NRG Oncology/RTOG 0214 phase 3 randomized clinical trial. *JAMA Oncol*. Published online March 14, 2019.

doi:10.1001/jamaoncol.2018.7220

eTable 1. Cox proportional hazard multivariable analysis results, for no prior surgery subset

eTable 2. Cox proportional hazard multivariate analysis results, for prior surgery subset

eTable 3. Outcome estimates, by histology

eFigure 1. Cumulative Incidences of First Failures by Event Types

This supplementary material has been provided by the authors to give readers additional information about their work.

eTable 1: Cox proportional hazard multivariable analysis results, for no prior surgery subset.

Covariate	Comparison	Overall survival		Disease-free survival		Brain metastasis	
		HR (95% CI)	p-value	HR (95% CI)	p-value	HR (95% CI)	p-value
Treatment arm	PCI vs. Observation (RL)	0.73 (0.54, 0.98)	0.04	0.70 (0.52, 0.93)	0.01	0.34 (0.17, 0.68)	0.002
Age	>= 60 vs. < 60 (RL)	1.15 (0.85, 1.56)	0.36	0.92 (0.68, 1.23)	0.55	0.45 (0.24, 0.84)	0.01
Zubrod	> 0 vs. 0 (RL)	1.47 (1.08, 1.99)	0.01	1.21 (0.90, 1.62)	0.20	0.73 (0.36, 1.45)	0.36
AJCC Stage	IIIB vs. IIIA (RL)	0.97 (0.73, 1.30)	0.86	1.02 (0.77, 1.35)	0.90	0.61 (0.32, 1.14)	0.12
Histology	Squamous vs. Non-squamous (RL)	1.08 (0.79, 1.47)	0.63	1.00 (0.74, 1.34)	0.99	0.20 (0.08, 0.53)	0.001

eTable 2: Cox proportional hazard multivariate analysis results, for prior surgery subset.

Covariate	Comparison	Overall survival		Disease-free survival		Brain metastasis	
		HR (95% CI)	p-value	HR (95% CI)	p-value	HR (95% CI)	p-value
Treatment arm	PCI vs. Observation (RL)	0.97 (0.63, 1.51)	0.91	0.88 (0.58, 1.35)	0.56	0.71 (0.27, 1.88)	0.49
Age	>= 60 vs. < 60 (RL)	1.77 (1.13, 2.78)	0.01	1.50 (0.98, 2.29)	0.06	0.77 (0.29, 2.03)	0.59
Zubrod	> 0 vs. 0 (RL)	1.24 (0.81, 1.90)	0.32	1.18 (0.78, 1.78)	0.43	1.67 (0.65, 4.32)	0.29
AJCC Stage	IIIB vs. IIIA (RL)	1.66 (1.06, 2.59)	0.03	1.75 (1.13, 2.69)	0.01	1.90 (0.73, 4.92)	0.19
Histology	Squamous vs. Non-squamous (RL)	1.01 (0.64, 1.59)	0.96	1.00 (0.65, 1.53)	0.99	0.11 (0.02, 0.85)	0.03

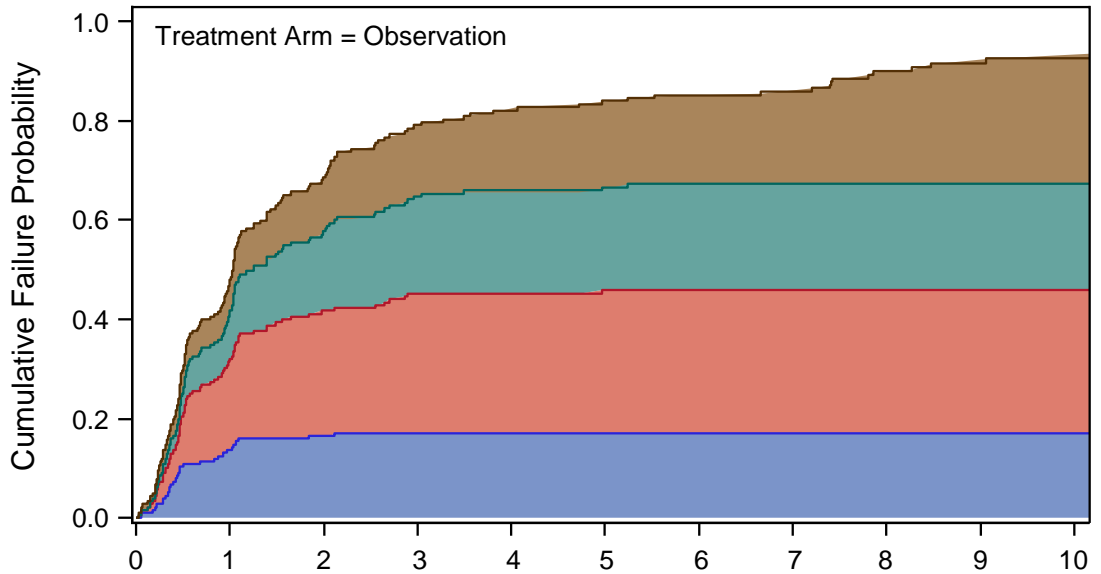
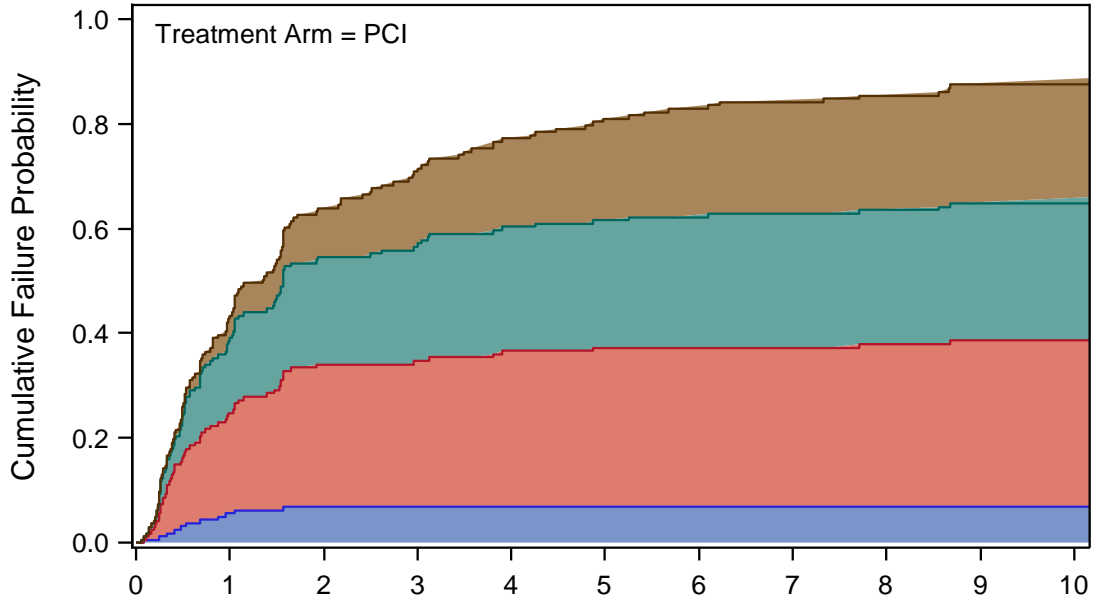
eTable 3: Outcome estimates, by histology							
Outcome by time	No. at Risk	Event estimate (%)	95% CI (%)	No. at Risk	Event estimate (%)	95% CI (%)	p-value *
Non-Squamous							
	PCI (n=112)			Observation (n=113)			
Overall survival							
2 years	66	59.5	49.7, 67.9	64	57.7	48.0, 66.3	0.11
5 years	26	23.8	16.4, 32.1	27	25.9	18.1, 34.5	
10 years	10	18.2	11.6, 26.0	6	13.3	7.2, 21.3	
MST (95% CI)	2.5 years (2.0, 3.1)			2.2 years (1.8, 2.9)			
No. of events	90			93			
HR of PCI vs. obs. (95% CI) §	0.77 (0.56, 1.06)						
Disease-free Survival							
2 years	43	38.8	29.8, 47.7	36	32.5	24.0, 41.3	0.039
5 years	19	17.6	11.1, 25.3	16	16.3	10.1, 24.0	
10 years	7	13.0	7.5, 20.0	4	8.6	3.8, 15.8	
MST (95% CI)	1.4 years (1.0, 1.6)			1.0 years (0.7, 1.3)			
No. of events	97			99			
HR of PCI vs. obs. (95% CI) §	0.72 (0.53, 0.98)						
CNS metastasis							
2 years	62	14.4	8.7, 23.2	54	32.1	23.8, 42.4	0.005
5 years	26	22.2	14.0, 34.0	22	37.7	28.2, 49.3	
10 years	10	22.2	14.0, 34.0	6	37.7	28.2, 49.3	
MST (95% CI)	Not reached			Not reached			
No. of events	19			35			
HR of PCI vs. obs. (95% CI) §	0.43 (0.24, 0.78)						

eTable 3: Outcome estimates, by histology (continued)							
Outcome by time	No. at Risk	Event estimate (%)	95% CI (%)	No. at Risk	Event estimate (%)	95% CI (%)	p-value *
Squamous							
	PCI (n=51)			Observation (n=64)			
Overall survival							0.68
2 years	24	49.1	34.6, 62.1	27	44.8	32.3, 56.5	
5 years	13	26.6	15.2, 39.4	15	26.1	15.8, 37.6	
10 years	5	16.1	7.4, 27.8	5	13.4	6.1, 23.6	
MST (95% CI)	2.0 years (1.3, 3.1)			1.8 (1.2, 2.9)			
No. of events	41			53			
HR of PCI vs. obs. (95% CI) §	0.91 (0.58, 1.42)						
Disease-free Survival							0.39
2 years	15	30.0	18.1, 42.9	19	29.7%	19.1, 41.1	
5 years	11	22.0	11.8, 34.2	10	15.6%	8.0, 25.5	
10 years	3	11.7	4.6, 22.4	3	5.9	1.7, 13.7	
MST (95% CI)	1.3 (0.7, 1.6)			1.0 years (0.7, 1.4)			
No. of events	44			60			
HR of PCI vs. obs. (95% CI) §	0.83 (0.54, 1.27)						
CNS metastasis¶							
2 years	24	2.0%	0.3, 13.1	27	8.5%	3.6, 19.2	
No. of events	1			5			

* From stratified log-rank test, stratified by AJCC Stage (IIIA vs. IIIB); Prior surgery (No vs. Yes) and Zubrod performance status (0 vs. >0).

§ From stratified Cox proportional hazard model, stratified by AJCC Stage (IIIA vs. IIIB); Prior surgery (No vs. Yes) and Zubrod performance status (0 vs. >0).

¶ The number of events is insufficient for meaningful analysis.



Time Since Randomization (Years)

