

Supplementary Online Content

Kjaer TK, Wreford Andersen EA, Winther JF, et al. Long-term somatic disease risk in adult Danish cancer survivors. *JAMA Oncol*. Published online March 7, 2010. doi:10.1001/jamaoncol.2018.7192

eTable 1. Descriptive statistics of the study participants

eTable 2. Results of Cox models for the effect of the 12 most frequent cancer types (exposed) as compared with cancer-free comparisons (unexposed) on the incidence of somatic disease

eFigure 1. Adjusted HRs and 95% CIs for hospitalization for somatic diseases in the 11 main ICD-10 diagnostic groups in Danish survivors of malignant melanoma, bladder, rectum and brain cancer and cancer-free matched comparison people

eFigure 2. Adjusted HRs and 95% CIs for hospitalization for somatic diseases in the 11 main ICD-10 diagnostic groups in Danish survivors of non-Hodgkin lymphoma, pancreas and kidney cancer and leukemia and cancer-free matched comparison people.

eFigure 3. Adjusted cumulative incidence risk difference and 95% CIs for hospitalization five years after diagnosis for somatic disease in the 11 main ICD-10 diagnostic groups among Danish survivors of malignant melanoma, bladder, rectum and brain cancer and cancer-free matched comparison people.

eFigure 4. Adjusted cumulative incidence risk difference and 95% CIs for hospitalization five years after diagnosis for somatic disease in the 11 main ICD-10 diagnostic groups among Danish survivors of non-Hodgkin lymphoma, pancreas and kidney cancer and leukemia and cancer-free matched comparison people.

eFigure 5. Adjusted HRs and 95% CIs for hospitalization for new primary cancers among Danish survivors of malignant melanoma, bladder, rectum, and brain cancer, non-Hodgkin lymphoma, pancreas and kidney cancer and leukemia and matched cancer-free comparison people.

eFigure 6. Adjusted HRs and 95% CIs for hospitalization for infectious and parasitic diseases among Danish survivors of malignant melanoma, bladder, rectum, and brain cancer, non-Hodgkin lymphoma, pancreas and kidney cancer and leukemia and matched cancer-free comparison people.

eFigure 7. Adjusted HRs and 95% CIs for hospitalization of survivors of the 12 most frequent cancer types for diseases of the blood and blood-forming organs as compared with matched cancer-free comparison people.

eFigure 8. Adjusted HRs and 95% CIs for hospitalization of survivors of the 12 most frequent cancer types for endocrine, nutritional and metabolic diseases as compared with matched cancer-free comparison people.

eFigure 9. Adjusted HRs and 95% CIs for hospitalization of survivors of the 12 most frequent cancer types for diseases of the nervous system and senses organs as compared with matched cancer-free comparison people.

eFigure 10. Adjusted HRs and 95% CIs for hospitalization of survivors of the 12 most frequent cancer types for diseases of the circulatory system as compared with matched cancer-free comparison people.

eFigure 11. Adjusted HRs and 95% CIs for hospitalization of survivors of the 12 most frequent cancer types for diseases of the respiratory system as compared with matched cancer-free comparison people.

eFigure 12. Adjusted HRs and 95% CIs for hospitalization of survivors of the 12 most frequent cancer types for diseases of the digestive system as compared with matched cancer-free comparison people.

eFigure 13. Adjusted HRs and 95% CIs for hospitalization of survivors of the 12 most frequent cancer types for diseases of the skin and subcutaneous tissue as compared with matched cancer-free comparison people.

eFigure 14. Adjusted HRs and 95% CIs for hospitalization of survivors of the 12 most frequent cancer types for diseases of the musculoskeletal system and connective tissue as compared with matched cancer-free comparison people.

eFigure 15. Adjusted HRs and 95% CIs for hospitalization of survivors of the 12 most frequent cancer types for diseases of the genitourinary system as compared with matched cancer-free comparison people.

This supplementary material has been provided by the authors to give readers additional information about their work.

eTable 1. Descriptive statistics of the study participants

	Cancer-free comparison group ^a	Cancer survivors	All	p
	n (%)	n (%)	n (%)	
Total	2,121,567	458,646	2,580,213	<0.001
Sex				
Male	1,054,465 (49.7)	230,793 (50.3)	1,285,258 (49.8)	
Female	1,067,102 (50.3)	227,853 (49.7)	1,294,955 (50.2)	
Period of entry				
1998–2001	414,344 (19.5)	87,068 (19.0)	501,412 (19.4)	<0.001
2002–2004	324,741 (15.3)	68,962 (15.0)	393,703 (15.3)	
2005–2008	472,781 (22.3)	101,846 (22.2)	574,627 (22.3)	
2009–2011	388,865 (18.3)	84,989 (18.5)	473,854 (18.4)	
2012–2014	520,836 (24.5)	115,781 (25.2)	636,617 (24.7)	
Age at entry (years)				
40–49	131,874 (6.2)	30,854 (6.7)	162,728 (6.3)	<0.001
50–59	336,507 (15.9)	75,803 (16.5)	412,310 (16.0)	
60–69	610,926 (28.8)	132,721 (28.9)	743,647 (28.8)	
70–79	634,433 (29.9)	134,006 (29.2)	768,439 (29.8)	
≥ 80	407,827 (19.2)	85,262 (18.6)	493,089 (19.1)	
Marital status				
Married/Partner	1,293,927 (61.0)	274,897 (59.9)	1,568,824 (60.8)	<0.001
Divorced/Widow/Unmarried	812,889 (38.3)	183,410 (40.0)	996,299 (38.6)	
Missing	14,751 (0.7)	339 (0.1)	15,090 (0.6)	
Charlson comorbidity score at entry^b				
0	1,851,793 (87.3)	372,584 (81.2)	2,224,377 (86.2)	<0.001
1	184,683 (8.7)	56,596 (12.3)	241,279 (9.4)	
≥ 2	85,091 (4.0)	29,466 (6.4)	114,557 (4.4)	
Education^c				
Higher	370,116 (17.4)	76,894 (16.8)	447,010 (17.3)	<0.001
Medium	867,673 (40.9)	195,066 (42.5)	1,062,739 (41.2)	
Short	646,622 (30.5)	140,235 (30.6)	786,857 (30.5)	
Data missing	237,156 (11.2)	46,451 (10.1)	283,607 (11.0)	
Income quintile^d				
1	411,118 (19.4)	93,956 (20.5)	505,074 (19.6)	<0.001
2	436,034 (20.6)	96,214 (21.0)	532,248 (20.6)	
3	429,445 (20.2)	90,438 (19.7)	519,883 (20.1)	
4	419,144 (19.8)	87,756 (19.1)	506,900 (19.6)	
5	414,051 (19.5)	90,134 (19.7)	504,185 (19.5)	

Data missing	11,775 (0.6)	148 (0.0)	11,923 (0.5)	
Comorbidities at entry				
Myocardial infarction	27,607 (1.3)	7,064 (1.5)	34,671 (1.3)	<0.001
Congestive heart failure	25,928 (1.2)	6,937 (1.5)	32,865 (1.3)	<0.001
Peripheral vascular disease	34,897 (1.6)	11,185 (2.4)	46,082 (1.8)	<0.001
Cerebrovascular disease	61,928 (2.9)	16,484 (3.6)	78,412 (3.0)	<0.001
Dementia	11,523 (0.5)	1,931 (0.4)	13,454 (0.5)	<0.001
Chronic pulmonary disease	49,267 (2.3)	16,144 (3.5)	65,411 (2.5)	<0.001
Connective tissue disease	21,313 (1.0)	5,798 (1.3)	27,111 (1.1)	<0.001
Ulcer disease	17,517 (0.8)	7,070 (1.5)	24,587 (1.0)	<0.001
Mild liver disease	3,797 (0.2)	2,261 (0.5)	6,058 (0.2)	<0.001
Diabetes	24,519 (1.2)	7,041 (1.5)	31,560 (1.2)	<0.001
Hemiplegia	922 (0.0)	318 (0.1)	1,240 (0.1)	<0.001
Moderate to severe renal disease	10,561 (0.5)	4,439 (1.0)	15,000 (0.6)	<0.001
Diabetes with end organ damage	17,278 (0.8)	4,510 (1.0)	21,788 (0.8)	<0.001
Moderate to severe liver disease	1,166 (0.1)	1,108 (0.2)	2,274 (0.1)	<0.001
AIDS	434 (0.0)	232 (0.1)	666 (0.0)	<0.001

^a The same person may be a comparison person in different cancer cohorts.

^b Disorders as defined in the Charlson comorbidity index, grouped according to accumulated sum of scores. This index provides an overall score for comorbidity based on a composite of values weighted by level of severity assigned to 19 selected conditions scored from 1 to 6⁶. For the purposes of this study, no cancers were included in the index. Scores are summarized on the basis of information on hospitalizations from 1978 onwards. The weights are assigned for each condition that a patient has, and the total is the score. For example, chronic pulmonary (1) and hemiplegia (2) = total score (3). Score 1: myocardial infarct, congestive heart failure, peripheral vascular disease, cerebrovascular disease, dementia, chronic pulmonary disease, connective tissue disease, ulcer disease, mild liver disease, diabetes types 1 and 2. Score 2: hemiplegia, moderate-to-severe renal disease, diabetes with end-organ damage type 1 or type 2. Score 3: moderate-to-severe liver disease. Score 6: AIDS.

^c Short education: mandatory education of up to 7 and 9 years for patients born before and after 1 January 1958, respectively; medium education: highest grade of primary school, secondary school or vocational education (8 – 12 years for patients born before 1 January 1958 and 10 – 12 years for patients born after 1 January 1958); higher education: >12 years of education.

^d Household income after taxation and interest adjusted for number of persons in the household; categorised on the basis of sex-specific distribution of household disposable income per person.

eTable2. Results of Cox models for the effect of the 12 most frequent cancer types (exposed) as compared with cancer-free comparisons (unexposed) on the incidence of somatic disease. All estimates are adjusted for gender, age and year group at inclusion, income, marital status and Charlson comorbidity score.

Cancer	Disease group	Events Exposed	Person-years exposed	Events unexposed	Person-years unexposed	HR	95% CI	p
Breast	Infectious and parasitic diseases	3,593	313,906	13,381	1,619,522	1.46	[1.40;1.51]	< 0.0001
	New primary cancer	4,336	317,641	23,800	1,680,241	1.00	[0.96;1.03]	0.8454
	Diseases of the blood and blood-forming organs	2,439	321,915	9,028	1,645,107	1.48	[1.41;1.55]	< 0.0001
	Endocrine, nutritional and metabolic diseases	5,201	297,994	22,226	1,531,097	1.26	[1.22;1.29]	< 0.0001
	Diseases of the nervous system and sense organs	10,653	241,295	47,645	1,240,016	1.20	[1.17;1.22]	< 0.0001
	Diseases of the circulatory system	10,216	248,202	46,776	1,321,023	1.21	[1.18;1.24]	< 0.0001
	Diseases of the respiratory system	6,515	298,081	25,792	1,535,197	1.37	[1.34;1.41]	< 0.0001
	Diseases of the digestive system	8,519	267,306	37,717	1,391,429	1.21	[1.18;1.24]	< 0.0001
	Diseases of the skin and subcutaneous tissue	3,852	300,455	12,165	1,597,651	1.70	[1.64;1.76]	< 0.0001
	Diseases of the musculoskeletal system and connective tissue	11,788	221,355	52,228	1,174,499	1.20	[1.18;1.22]	< 0.0001
	Diseases of the genitourinary system	7,304	209,114	32,961	1,400,647	1.48	[1.44;1.52]	< 0.0001
Lung	Infectious and parasitic diseases	1,052	39,936	16,722	1,419,979	2.42	[2.27;2.58]	< 0.0001
	New primary cancer	780	40,959	30,980	1,483,087	1.02	[0.95;1.10]	0.5573
	Diseases of the blood and blood-forming organs	950	39,706	11,144	1,448,797	3.52	[3.29;3.76]	< 0.0001
	Endocrine, nutritional and metabolic diseases	1,294	37,579	21,791	1,358,023	2.24	[2.11;2.37]	< 0.0001

	Diseases of the nervous system and sense organs	2,045	29,136	50,142	1,012,439	1.51	[1.45;1.58]	< 0.0001
	Diseases of the circulatory system	2,176	27,846	54,518	1,066,512	1.68	[1.61;1.76]	< 0.0001
	Diseases of the respiratory system	3,045	23,615	32,578	1,332,839	5.85	[5.63;6.07]	< 0.0001
	Diseases of the digestive system	1,816	31,282	41,577	1,181,284	1.69	[1.61;1.77]	< 0.0001
	Diseases of the skin and subcutaneous tissue	512	39,915	11,904	1,411,126	1.49	[1.36;1.63]	< 0.0001
	Diseases of the musculoskeletal system and connective tissue	1,550	30,318	43,886	1,074,571	1.19	[1.13;1.25]	< 0.0001
	Diseases of the genitourinary system	1,108	36,046	31,893	1,258,315	1.27	[1.19;1.35]	< 0.0001
Prostate	Infectious and parasitic diseases	3,233	151,637	12,979	845,995	1.50	[1.44;1.56]	< 0.0001
	New primary cancer	2,760	155,696	24,620	885,962	0.65	[0.63;0.68]	< 0.0001
	Diseases of the blood and blood-forming organs	3,636	155,891	8,446	863,477	2.60	[2.50;2.71]	< 0.0001
	Endocrine, nutritional and metabolic diseases	2,872	149,779	14,312	817,175	1.17	[1.13;1.22]	< 0.0001
	Diseases of the nervous system and sense organs	7,076	103,039	33,074	583,756	1.23	[1.20;1.26]	< 0.0001
	Diseases of the circulatory system	7,346	108,395	39,492	600,724	1.06	[1.04;1.09]	< 0.0001
	Diseases of the respiratory system	4,816	143,913	25,723	786,540	1.12	[1.09;1.16]	< 0.0001
	Diseases of the digestive system	6,767	116,493	29,677	693,423	1.37	[1.33;1.41]	< 0.0001
	Diseases of the skin and subcutaneous tissue	1,550	153,791	8,011	843,457	1.09	[1.03;1.15]	0.0026
	Diseases of the musculoskeletal system and connective tissue	5,795	114,005	25,815	674,357	1.28	[1.24;1.32]	< 0.0001
	Diseases of the genitourinary system	4,632	104,960	21,597	751,853	1.61	[1.56;1.66]	< 0.0001

Colon	Infectious and parasitic diseases	1,745	104,140	10,800	832,763	1.32	[1.25;1.39]	< 0.0001
	New primary cancer	2,221	104,461	18,066	871,981	1.05	[1.00;1.09]	0.0462
	Diseases of the blood and blood-forming organs	1,466	97,661	7,528	848,153	1.78	[1.68;1.88]	< 0.0001
	Endocrine, nutritional and metabolic diseases	2,468	98,058	14,446	795,278	1.42	[1.36;1.48]	< 0.0001
	Diseases of the nervous system and sense organs	4,165	72,275	30,297	571,331	1.11	[1.07;1.14]	< 0.0001
	Diseases of the circulatory system	4,137	75,528	34,440	619,639	1.01	[0.98;1.04]	0.6320
	Diseases of the respiratory system	2,982	98,249	20,955	778,740	1.16	[1.11;1.20]	< 0.0001
	Diseases of the digestive system	4,143	59,476	25,201	694,338	1.91	[1.85;1.98]	< 0.0001
	Diseases of the skin and subcutaneous tissue	1,076	104,655	7,307	829,112	1.16	[1.09;1.23]	< 0.0001
	Diseases of the musculoskeletal system and connective tissue	3,542	80,484	25,820	632,611	1.05	[1.02;1.09]	0.0049
	Diseases of the genitourinary system	2,992	89,501	19,639	738,588	1.27	[1.22;1.32]	< 0.0001
Malignant melanoma	Infectious and parasitic diseases	839	90,584	4,021	440,946	1.08	[1.00;1.17]	0.0379
	New primary cancer	1,371	89,646	7,165	458,284	1.03	[0.97;1.09]	0.3787
	Diseases of the blood and blood-forming organs	652	92,354	2,451	449,598	1.40	[1.28;1.53]	< 0.0001
	Endocrine, nutritional and metabolic diseases	1,227	87,147	5,648	421,579	1.10	[1.04;1.17]	0.0020
	Diseases of the nervous system and sense organs	2,793	69,943	12,742	342,798	1.11	[1.07;1.16]	< 0.0001
	Diseases of the circulatory system	2,760	71,414	13,661	353,791	1.05	[1.00;1.09]	0.0354
	Diseases of the respiratory system	1,479	87,050	7,647	419,074	0.99	[0.94;1.05]	0.8141
	Diseases of the digestive system	2,262	76,893	11,081	375,055	1.03	[0.99;1.08]	0.1725
	Diseases of the skin and subcutaneous tissue	1,272	85,102	3,361	435,488	2.00	[1.88;2.14]	< 0.0001

	Diseases of the musculoskeletal system and connective tissue	2,873	66,533	13,215	335,237	1.09	[1.05;1.14]	< 0.0001
	Diseases of the genitourinary system	1,847	78,201	8,685	391,595	1.08	[1.03;1.14]	0.0022
Bladder and urinary tract	Infectious and parasitic diseases	1,738	80,243	7,264	548,574	1.69	[1.60;1.78]	< 0.0001
	New primary cancer	2,249	78,675	13,216	574,373	1.26	[1.20;1.32]	< 0.0001
	Diseases of the blood and blood-forming organs	1,336	83,114	4,993	559,757	1.91	[1.79;2.02]	< 0.0001
	Endocrine, nutritional and metabolic diseases	1,719	78,048	9,057	527,270	1.34	[1.27;1.41]	< 0.0001
	Diseases of the nervous system and sense organs	3,128	56,495	20,152	376,224	1.06	[1.02;1.10]	0.0047
	Diseases of the circulatory system	3,681	55,797	23,296	397,328	1.16	[1.12;1.20]	< 0.0001
	Diseases of the respiratory system	2,600	74,474	14,829	510,953	1.25	[1.20;1.30]	< 0.0001
	Diseases of the digestive system	3,305	62,873	17,249	450,255	1.37	[1.32;1.42]	< 0.0001
	Diseases of the skin and subcutaneous tissue	813	81,666	4,779	546,652	1.13	[1.05;1.22]	0.0010
	Diseases of the musculoskeletal system and connective tissue	2,544	63,828	16,182	426,180	1.04	[1.00;1.09]	0.0619
	Diseases of the genitourinary system	2,871	54,807	13,297	484,067	1.93	[1.86;2.01]	< 0.0001
Rectum	Infectious and parasitic diseases	1,256	69,612	6,591	525,505	1.51	[1.42;1.61]	< 0.0001
	New primary cancer	1,295	69,366	11,417	549,519	0.93	[0.88;0.98]	0.0108
	Diseases of the blood and blood-forming organs	1,066	70,479	4,313	535,921	2.00	[1.87;2.14]	< 0.0001
	Endocrine, nutritional and metabolic diseases	1,468	65,362	8,378	502,346	1.41	[1.33;1.49]	< 0.0001
	Diseases of the nervous system and sense organs	2,601	50,967	18,612	370,977	1.04	[1.00;1.09]	0.0435

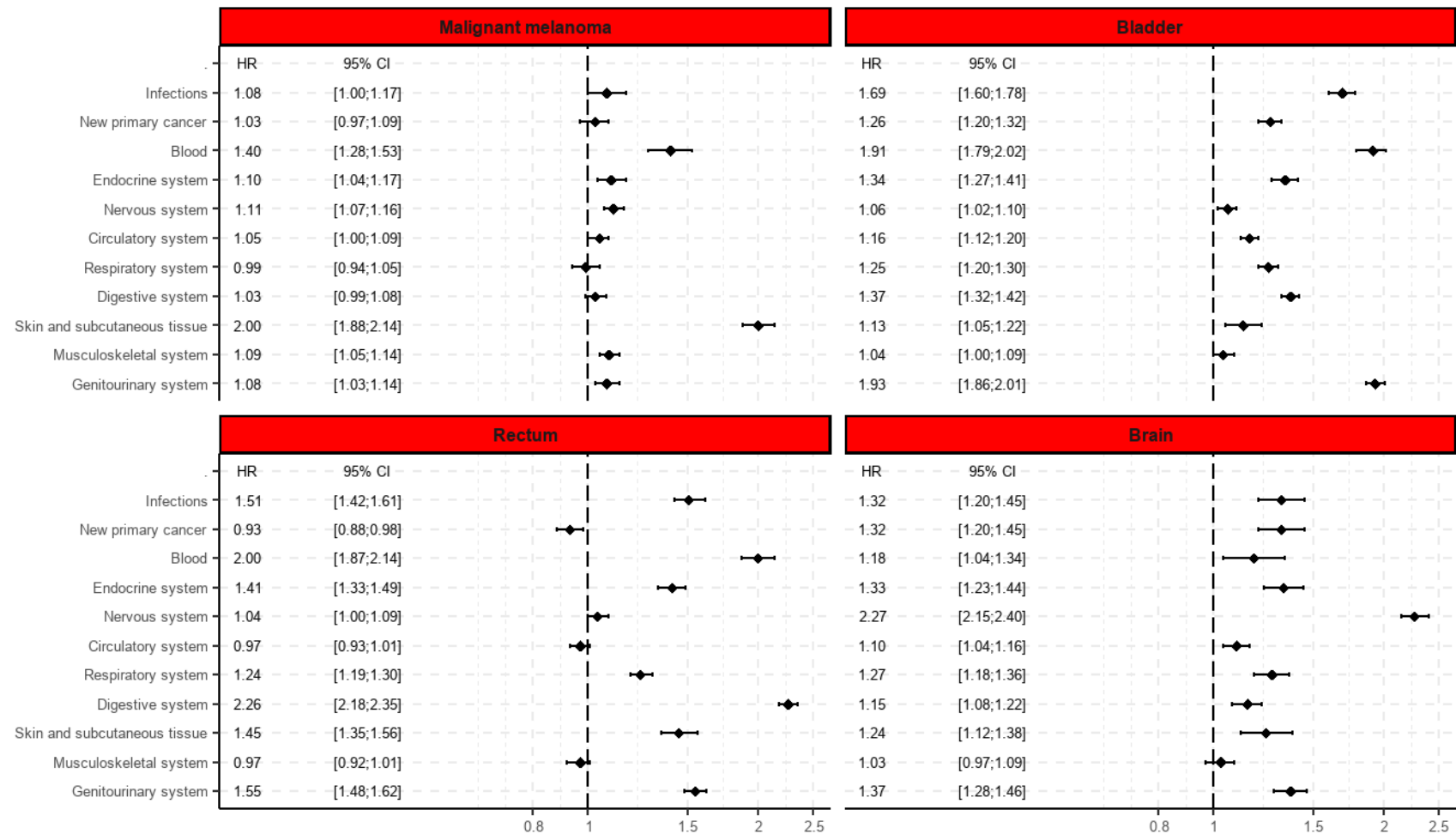
	Diseases of the circulatory system	2,591	51,632	21,006	392,654	0.97	[0.93;1.01]	0.1980
	Diseases of the respiratory system	1,972	65,817	12,568	493,045	1.24	[1.19;1.30]	< 0.0001
	Diseases of the digestive system	3,184	39,122	15,652	437,102	2.26	[2.18;2.35]	< 0.0001
	Diseases of the skin and subcutaneous tissue	835	68,621	4,478	522,200	1.45	[1.35;1.56]	< 0.0001
	Diseases of the musculoskeletal system and connective tissue	2,186	55,833	15,900	401,867	0.97	[0.92;1.01]	0.1383
	Diseases of the genitourinary system	2,214	56,285	11,953	466,326	1.55	[1.48;1.62]	< 0.0001
Brain and central nervous system	Infectious and parasitic diseases	518	46,528	3,483	378,678	1.32	[1.20;1.45]	< 0.0001
	New primary cancer	765	46,048	6,170	393,517	1.32	[1.20;1.45]	< 0.0001
	Diseases of the blood and blood-forming organs	283	47,878	2,267	385,682	1.18	[1.04;1.34]	0.0101
	Endocrine, nutritional and metabolic diseases	738	42,842	5,029	362,050	1.33	[1.23;1.44]	< 0.0001
	Diseases of the nervous system and sense organs	1,540	18,075	11,374	287,740	2.27	[2.15;2.40]	< 0.0001
	Diseases of the circulatory system	1,302	34,608	12,055	301,323	1.10	[1.04;1.16]	0.0016
	Diseases of the respiratory system	936	43,806	6,815	358,379	1.27	[1.18;1.36]	< 0.0001
	Diseases of the digestive system	1,267	38,713	9,649	320,326	1.15	[1.08;1.22]	< 0.0001
	Diseases of the skin and subcutaneous tissue	434	46,333	2,806	373,850	1.24	[1.12;1.38]	< 0.0001
	Diseases of the musculoskeletal system and connective tissue	1,407	32,931	11,487	285,692	1.03	[0.97;1.09]	0.3472
	Diseases of the genitourinary system	1,138	39,361	7,368	336,614	1.37	[1.28;1.46]	< 0.0001
Non-Hodgkin	Infectious and parasitic diseases	633	19,835	1,579	146,214	3.21	[2.92;3.53]	< 0.0001

lymphoma	New primary cancer	417	23,020	2,740	151,922	1.06	[0.95;1.17]	0.2937
	Diseases of the blood and blood-forming organs	297	21,083	1,019	148,478	2.31	[2.03;2.64]	< 0.0001
	Endocrine, nutritional and metabolic diseases	430	21,109	2,211	139,480	1.38	[1.24;1.53]	< 0.0001
	Diseases of the nervous system and sense organs	952	16,311	4,971	109,048	1.34	[1.25;1.44]	< 0.0001
	Diseases of the circulatory system	883	16,059	5,245	114,240	1.28	[1.19;1.37]	< 0.0001
	Diseases of the respiratory system	899	18,409	3,006	138,935	2.44	[2.26;2.63]	< 0.0001
	Diseases of the digestive system	819	16,112	4,069	125,199	1.59	[1.47;1.72]	< 0.0001
	Diseases of the skin and subcutaneous tissue	374	21,164	1,126	145,024	2.28	[2.03;2.57]	< 0.0001
	Diseases of the musculoskeletal system and connective tissue	804	16,177	4,700	111,907	1.16	[1.07;1.25]	0.0001
	Diseases of the genitourinary system	605	19,294	3,210	131,689	1.32	[1.20;1.44]	< 0.0001
Pancreas	Infectious and parasitic diseases	170	3,375	3,756	308,372	4.93	[4.20;5.79]	< 0.0001
	New primary cancer	61	3,473	6,420	322,778	1.04	[0.81;1.35]	0.7377
	Diseases of the blood and blood-forming organs	174	3,315	2,559	314,528	8.19	[6.97;9.62]	< 0.0001
	Endocrine, nutritional and metabolic diseases	215	2,379	5,084	295,043	6.00	[5.21;6.92]	< 0.0001
	Diseases of the nervous system and sense organs	126	2,761	10,851	216,912	1.07	[0.90;1.28]	0.4264
	Diseases of the circulatory system	214	2,772	12,438	231,164	1.74	[1.51;1.99]	< 0.0001
	Diseases of the respiratory system	171	3,196	7,453	289,020	2.55	[2.18;2.97]	< 0.0001
	Diseases of the digestive system	224	1,351	9,055	257,257	5.24	[4.57;6.01]	< 0.0001

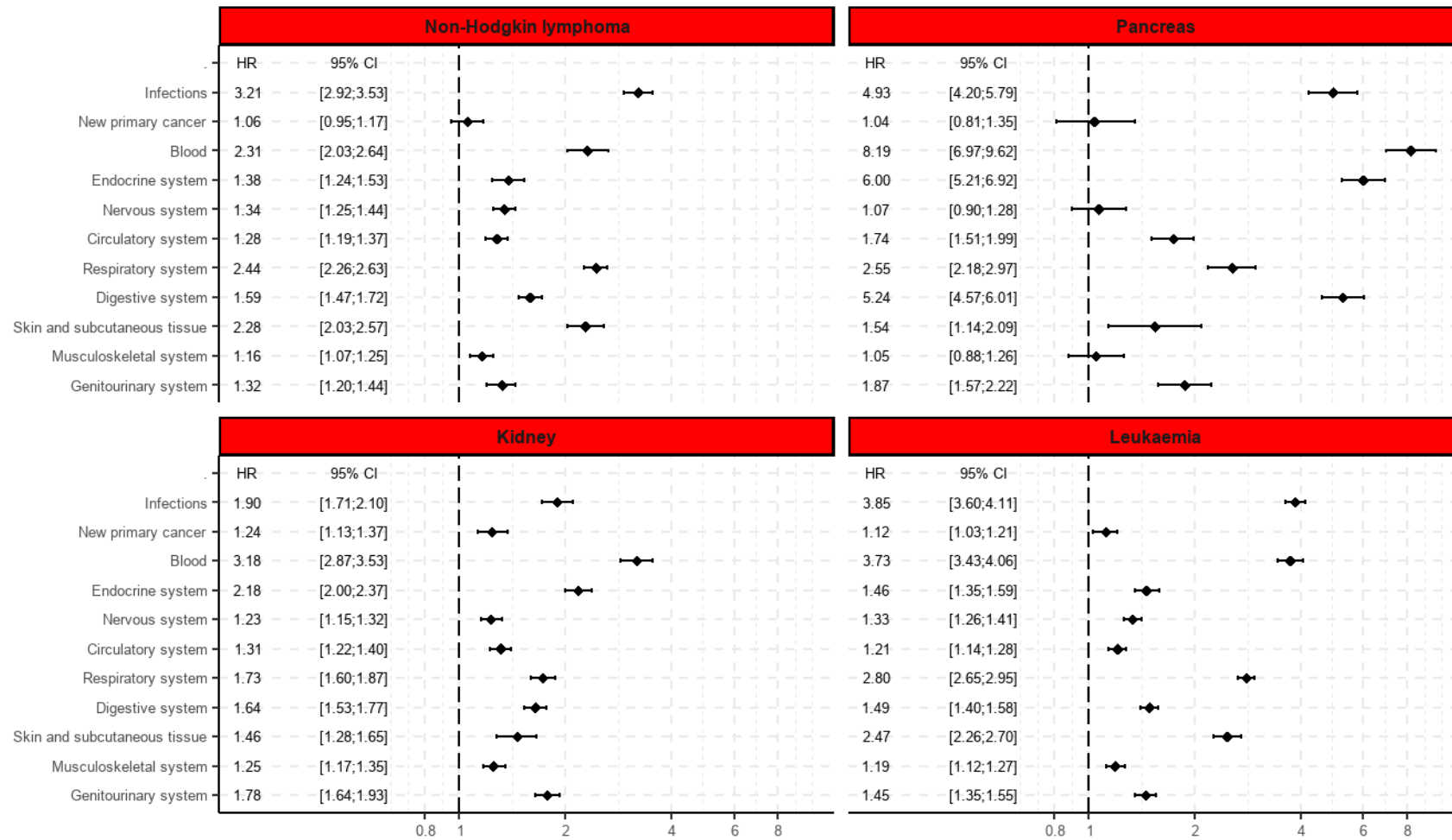
	Diseases of the skin and subcutaneous tissue	44	3,462	2,681	306,885	1.54	[1.14;2.09]	0.0048
	Diseases of the musculoskeletal system and connective tissue	126	2,923	9,474	234,356	1.05	[0.88;1.26]	0.5607
	Diseases of the genitourinary system	134	3,062	7,086	274,703	1.87	[1.57;2.22]	< 0.0001
Kidney	Infectious and parasitic diseases	459	22,721	2,460	219,276	1.90	[1.71;2.10]	< 0.0001
	New primary cancer	504	22,926	4,342	229,169	1.24	[1.13;1.37]	< 0.0001
	Diseases of the blood and blood-forming organs	486	22,770	1,630	223,945	3.18	[2.87;3.53]	< 0.0001
	Endocrine, nutritional and metabolic diseases	662	20,767	3,287	210,133	2.18	[2.00;2.37]	< 0.0001
	Diseases of the nervous system and sense organs	919	16,503	7,495	159,759	1.23	[1.15;1.32]	< 0.0001
	Diseases of the circulatory system	934	15,677	8,156	168,028	1.31	[1.22;1.40]	< 0.0001
	Diseases of the respiratory system	791	20,742	4,793	206,258	1.73	[1.60;1.87]	< 0.0001
	Diseases of the digestive system	896	16,086	6,268	183,021	1.64	[1.53;1.77]	< 0.0001
	Diseases of the skin and subcutaneous tissue	286	22,796	1,827	218,022	1.46	[1.28;1.65]	< 0.0001
	Diseases of the musculoskeletal system and connective tissue	838	16,485	6,605	167,839	1.25	[1.17;1.35]	< 0.0001
	Diseases of the genitourinary system	682	16,642	4,724	196,667	1.78	[1.64;1.93]	< 0.0001
Leukemia	Infectious and parasitic diseases	1,292	29,249	3,376	272,573	3.85	[3.60;4.11]	< 0.0001
	New primary cancer	684	33,298	5,708	284,827	1.12	[1.03;1.21]	0.0063
	Diseases of the blood and blood-forming organs	763	29,493	2,220	277,814	3.73	[3.43;4.06]	< 0.0001

	Endocrine, nutritional and metabolic diseases	680	31,322	4,306	261,369	1.46	[1.35;1.59]	< 0.0001
	Diseases of the nervous system and sense organs	1,438	23,050	9,416	192,616	1.33	[1.26;1.41]	< 0.0001
	Diseases of the circulatory system	1,381	24,098	10,569	204,872	1.21	[1.14;1.28]	< 0.0001
	Diseases of the respiratory system	1,731	26,836	6,563	255,979	2.80	[2.65;2.95]	< 0.0001
	Diseases of the digestive system	1,290	25,334	8,023	227,837	1.49	[1.40;1.58]	< 0.0001
	Diseases of the skin and subcutaneous tissue	644	31,310	2,321	271,332	2.47	[2.26;2.70]	< 0.0001
	Diseases of the musculoskeletal system and connective tissue	1,159	24,579	8,060	208,927	1.19	[1.12;1.27]	< 0.0001
	Diseases of the genitourinary system	968	28,219	6,166	243,082	1.45	[1.35;1.55]	< 0.0001

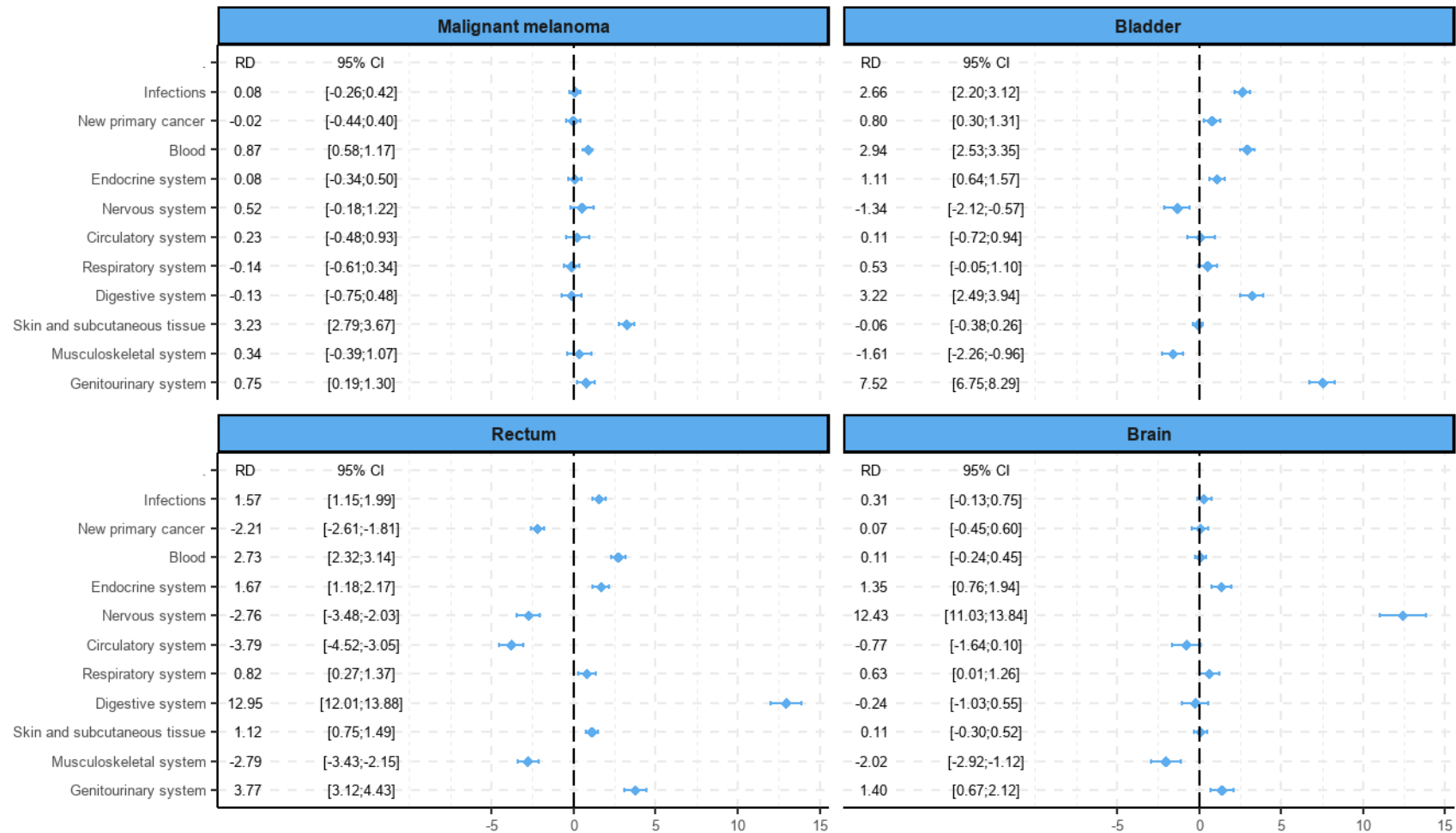
eFigure 1. Adjusted HRs and 95% CIs for hospitalization for somatic diseases in the 11 main ICD-10 diagnostic groups in Danish survivors of malignant melanoma, bladder, rectum and brain cancer and cancer-free matched comparison people.



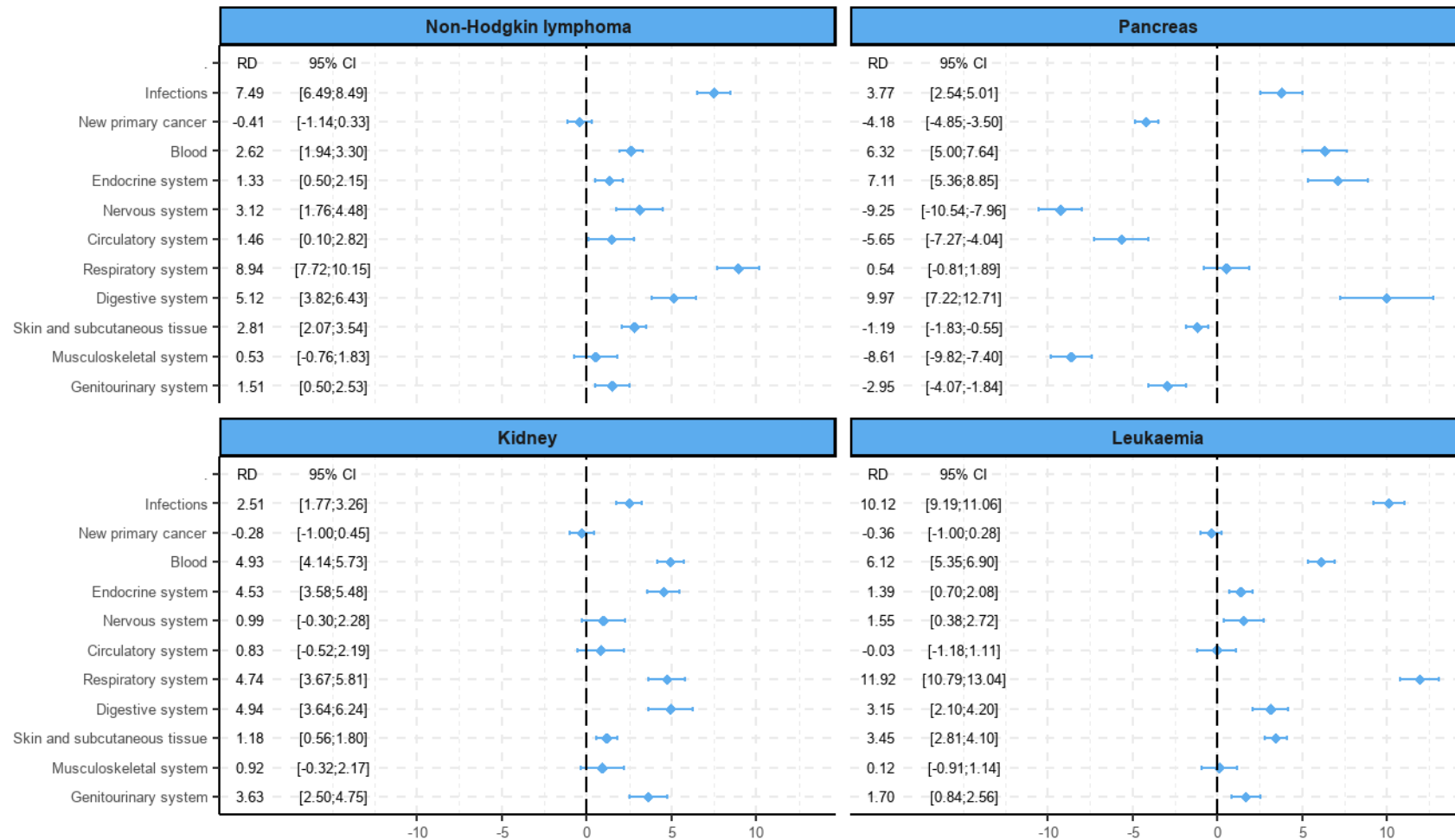
eFigure 2. Adjusted HRs and 95% CIs for hospitalization for somatic diseases in the 11 main ICD-10 diagnostic groups in Danish survivors of non-Hodgkin lymphoma, pancreas and kidney cancer and leukemia and cancer-free matched comparison people.



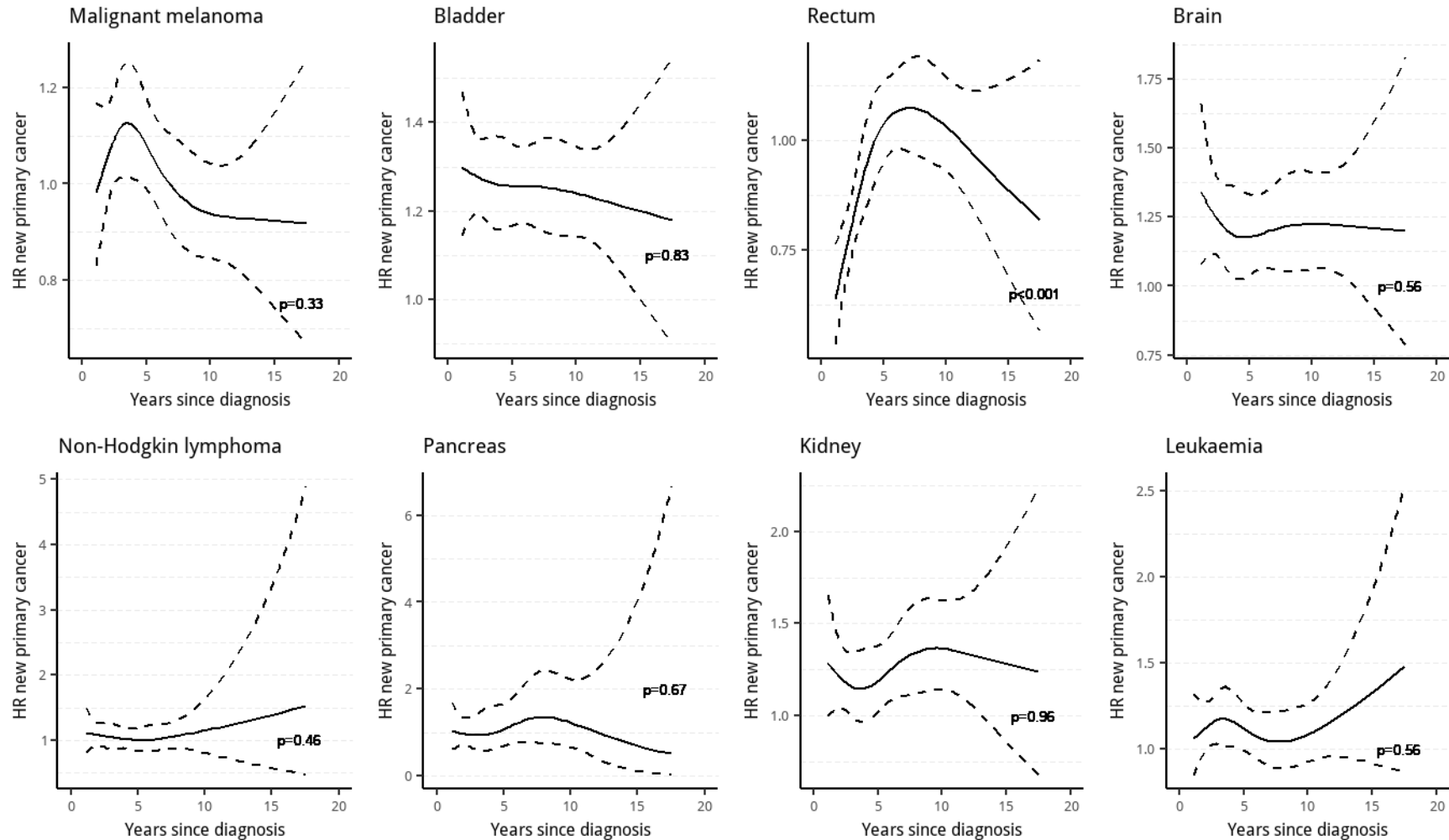
eFigure 3. Adjusted cumulative incidence risk difference and 95% CIs for hospitalization five years after diagnosis for somatic disease in the 11 main ICD-10 diagnostic groups among Danish survivors of malignant melanoma, bladder, rectum and brain cancer and cancer-free matched comparison people.



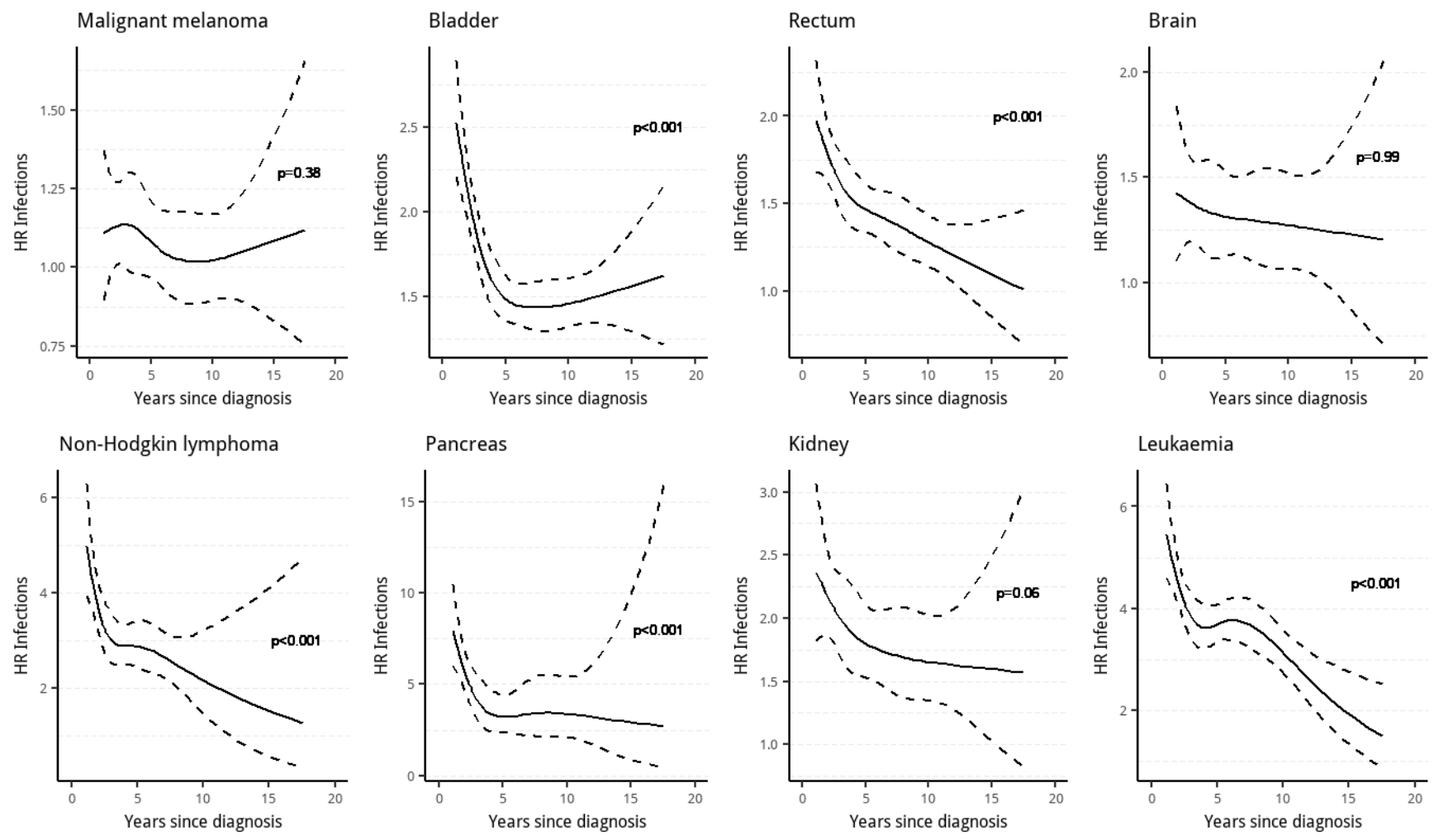
eFigure 4. Adjusted cumulative incidence risk difference and 95% CIs for hospitalization five years after diagnosis for somatic disease in the 11 main ICD-10 diagnostic groups among Danish survivors of non-Hodgkin lymphoma, pancreas and kidney cancer and leukemia and cancer-free matched comparison people.



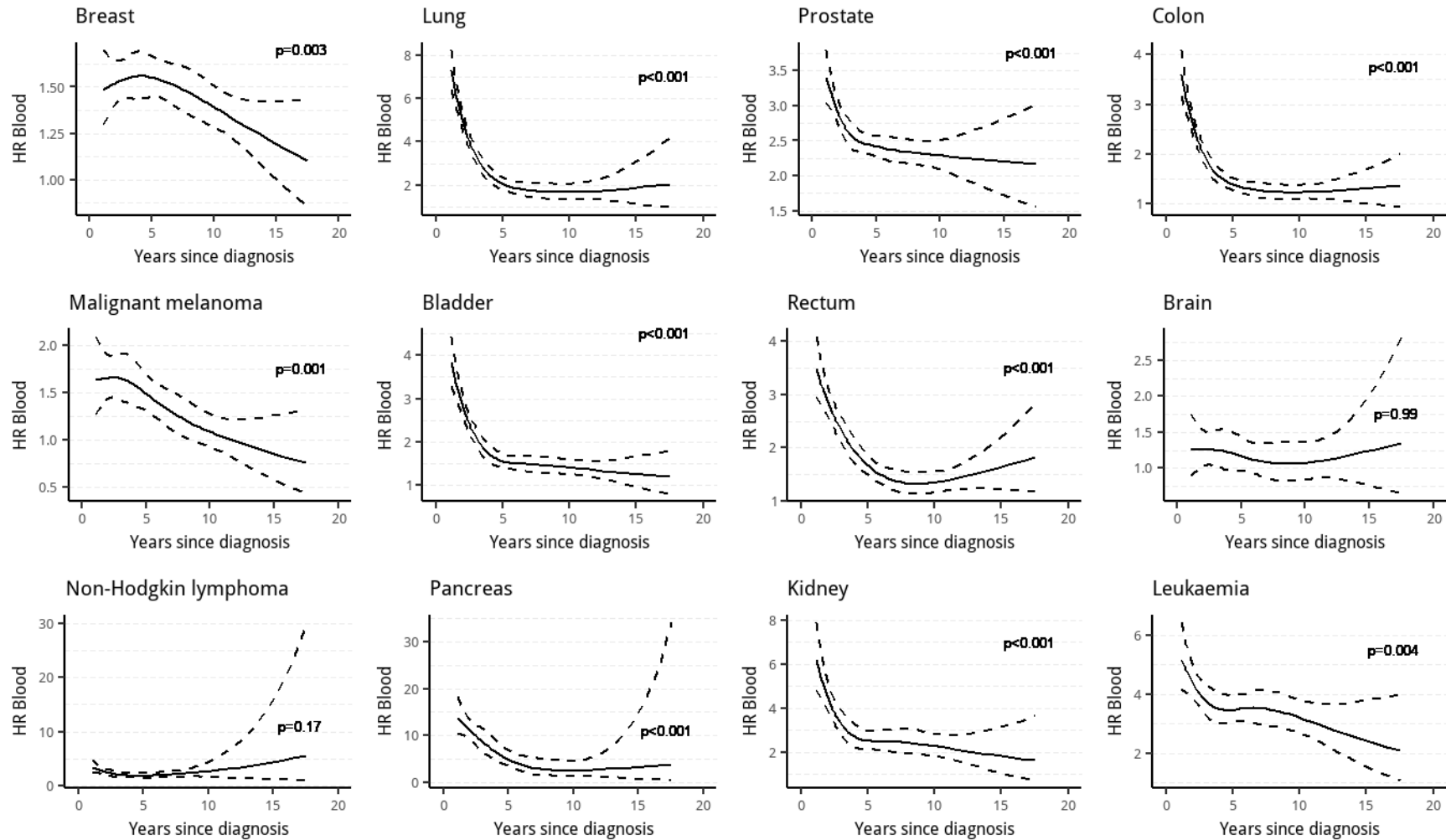
eFigure 5. Adjusted HRs and 95% CIs for hospitalization for new primary cancers among Danish survivors of malignant melanoma, bladder, rectum, and brain cancer, non-Hodgkin lymphoma, pancreas and kidney cancer and leukemia and matched cancer-free comparison people. Solid lines represent HRs and the two dashed lines 95% CIs. Note that the y-axes are not the same. *P* values for test of hypothesis of constant HR over time.



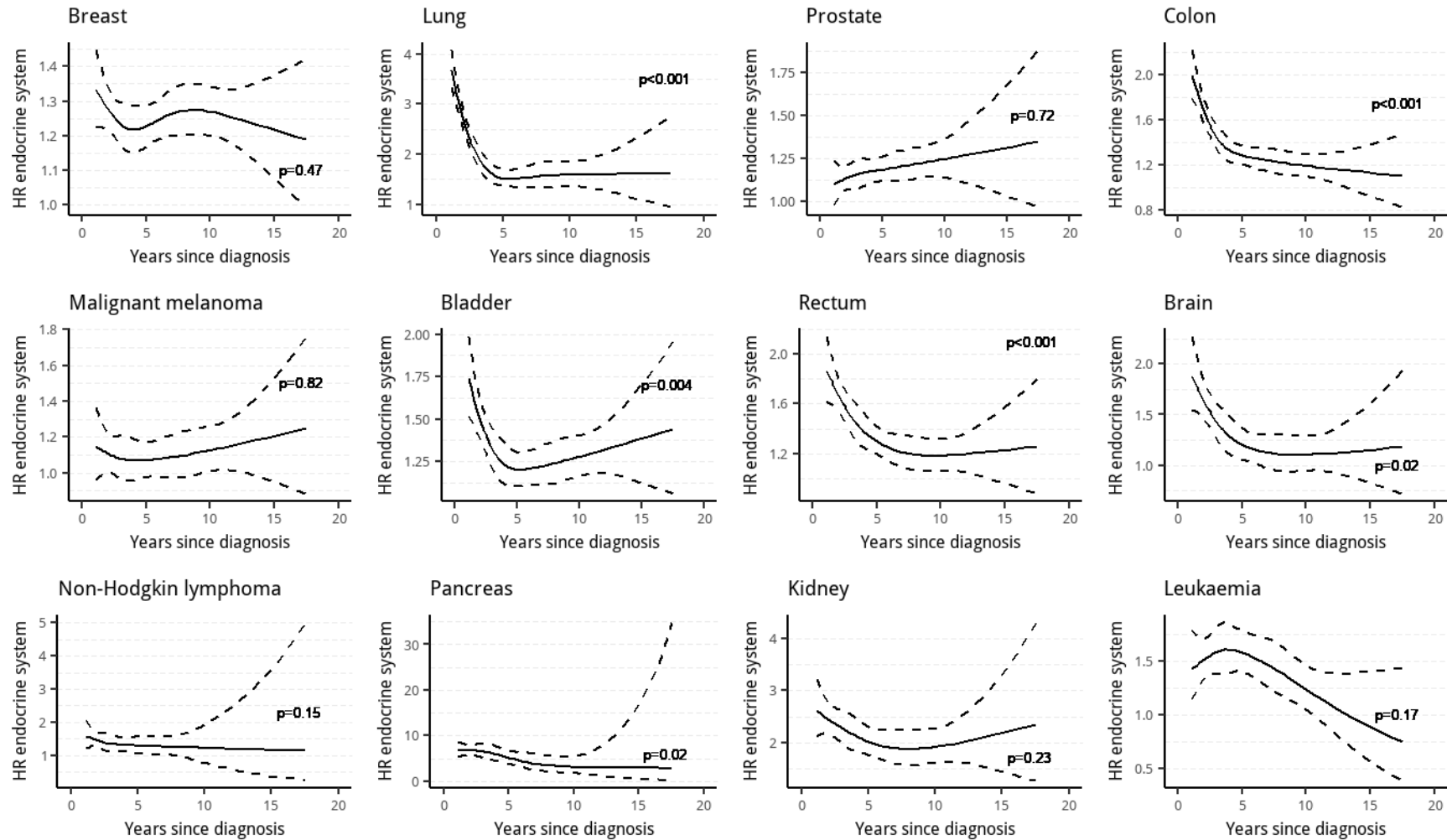
eFigure 6. Adjusted HRs and 95% CIs for hospitalization for infectious and parasitic diseases among Danish survivors of malignant melanoma, bladder, rectum, and brain cancer, non-Hodgkin lymphoma, pancreas and kidney cancer and leukemia and matched cancer-free comparison people. Solid lines represent HRs and the two dashed lines 95% CIs. Note that the y-axes are not the same. *P* values for test of hypothesis of constant HR over time.



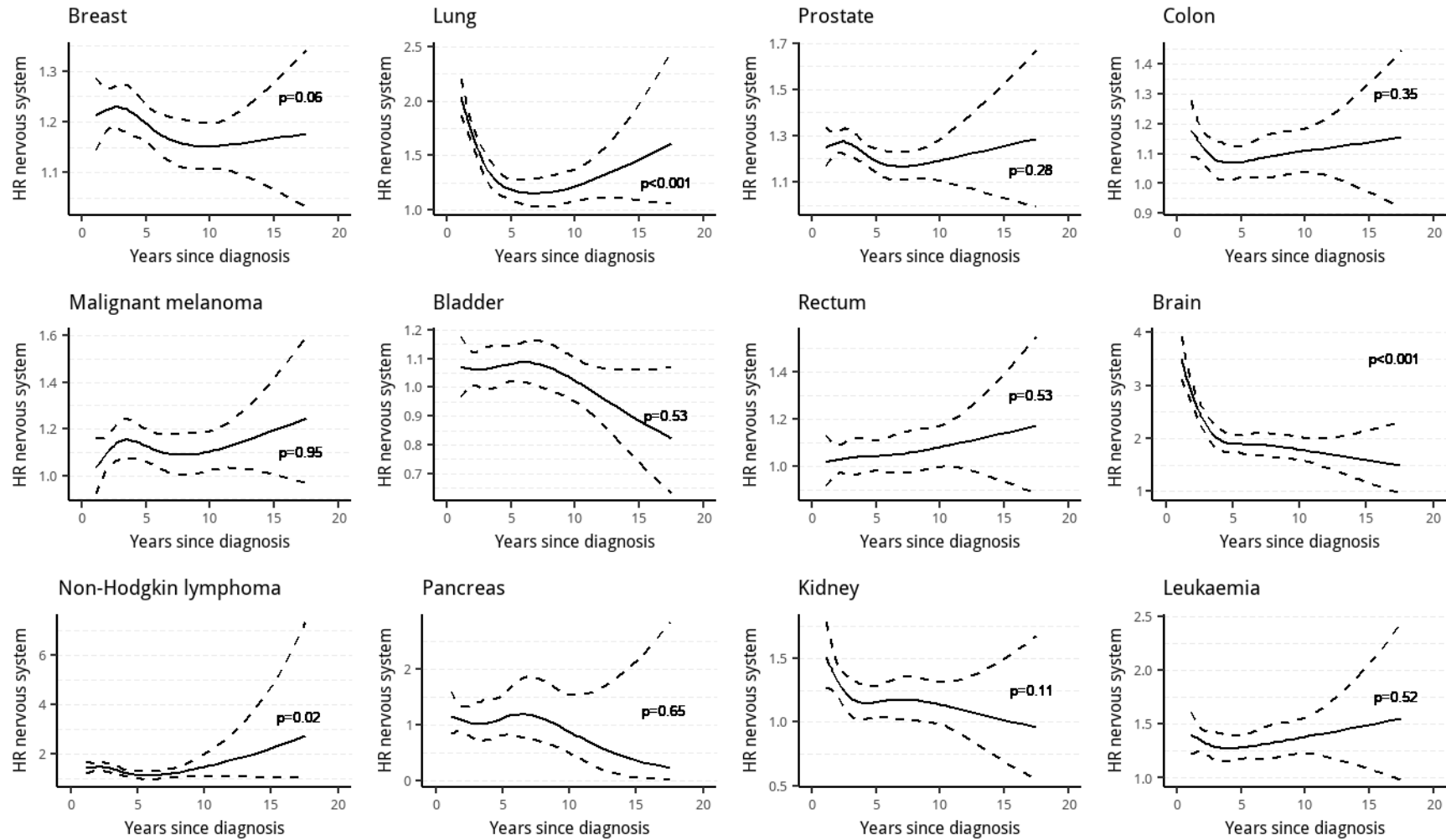
eFigure 7. Adjusted HRs and 95% CIs for hospitalization of survivors of the 12 most frequent cancer types for diseases of the blood and blood-forming organs as compared with matched cancer-free comparison people. Solid lines represent HRs and the two dashed lines 95% CIs. Note that the y-axes are not the same. *P* values for test of hypothesis of constant HR over time.



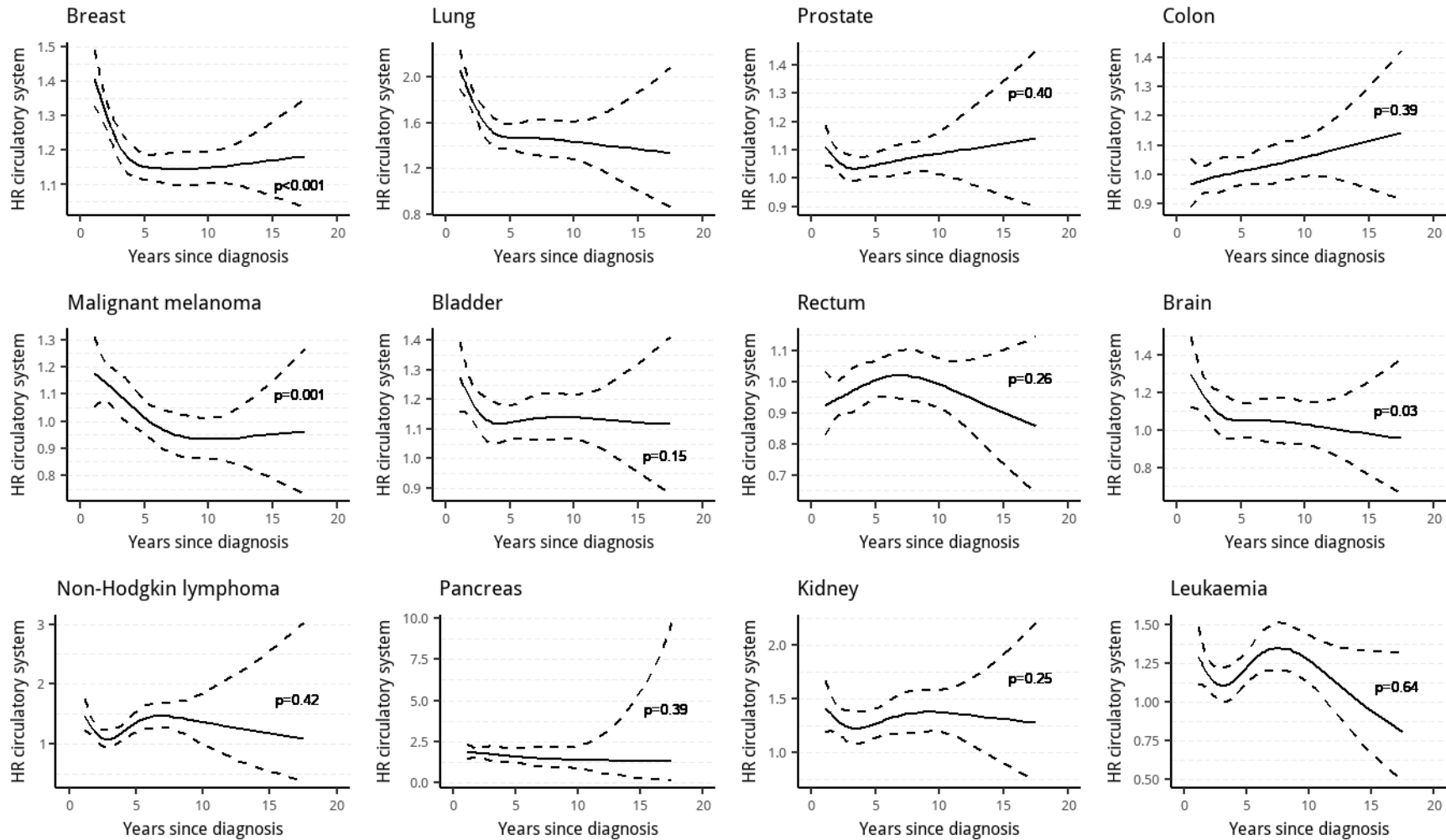
eFigure 8. Adjusted HRs and 95% CIs for hospitalization of survivors of the 12 most frequent cancer types for endocrine, nutritional and metabolic diseases as compared with matched cancer-free comparison people. Solid lines represent HRs and the two dashed lines 95% CIs. Note that the y-axes are not the same. *P* values for test of hypothesis of constant HR over time.



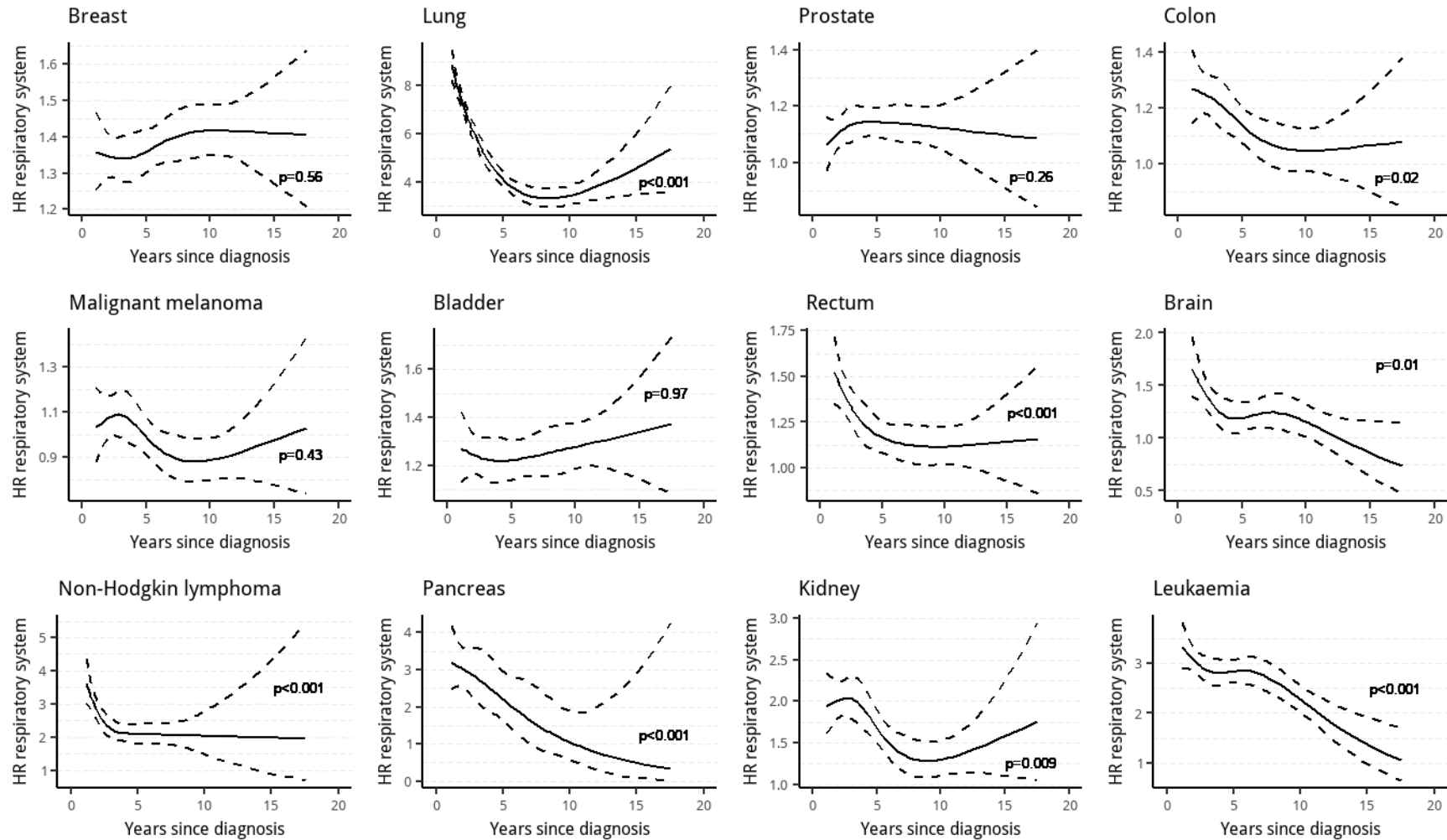
eFigure 9. Adjusted HRs and 95% CIs for hospitalization of survivors of the 12 most frequent cancer types for diseases of the nervous system and senses organs as compared with matched cancer-free comparison people. Solid lines represent HRs and the two dashed lines 95% CIs. Note that the y-axes are not the same. *P* values for test of hypothesis of constant HR over time.



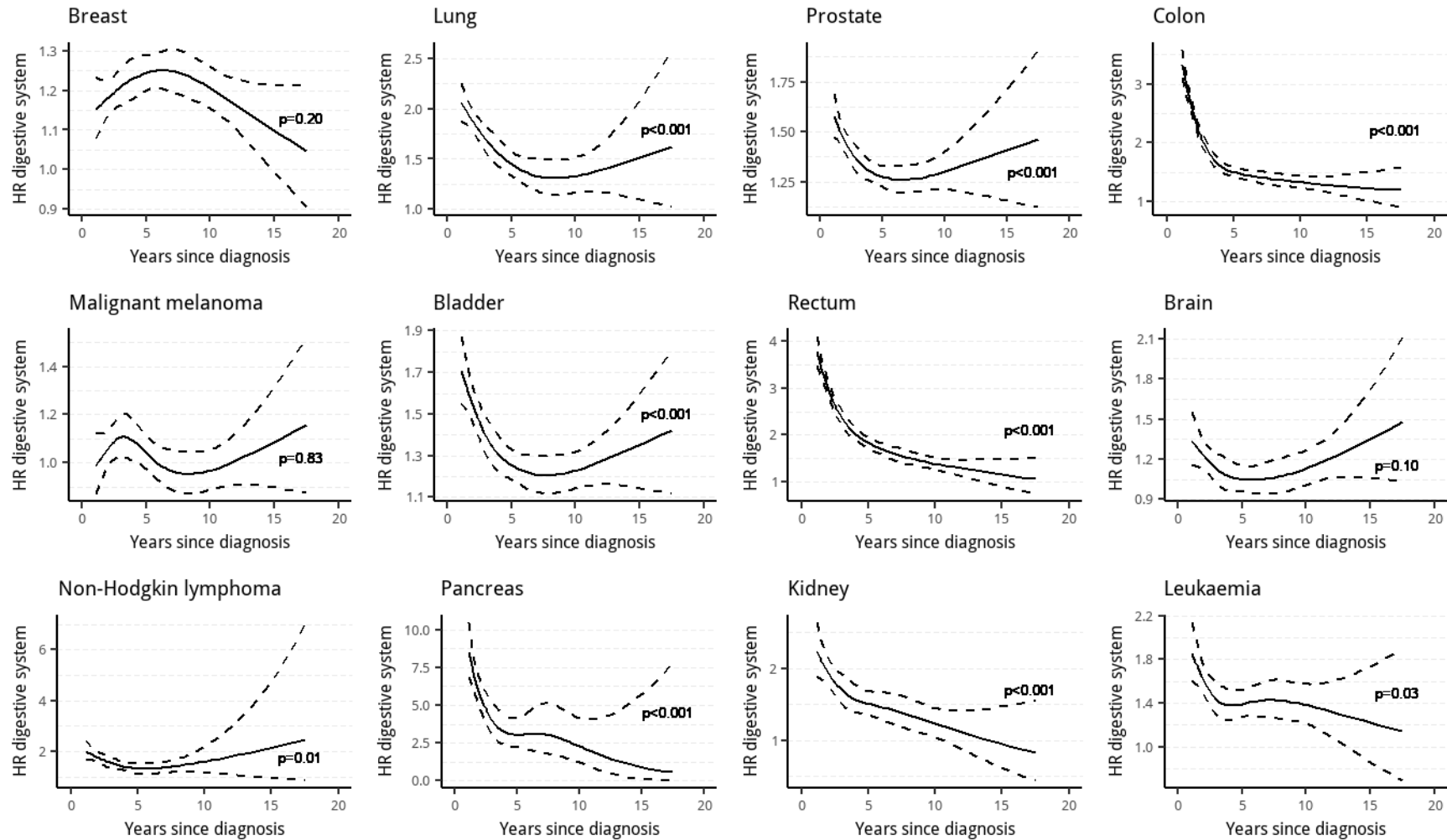
eFigure 10. Adjusted HRs and 95% CIs for hospitalization of survivors of the 12 most frequent cancer types for diseases of the circulatory system as compared with matched cancer-free comparison people. Solid lines represent HRs and the two dashed lines 95% CIs. Note that the y-axes are not the same. *P* values for test of hypothesis of constant HR over time.



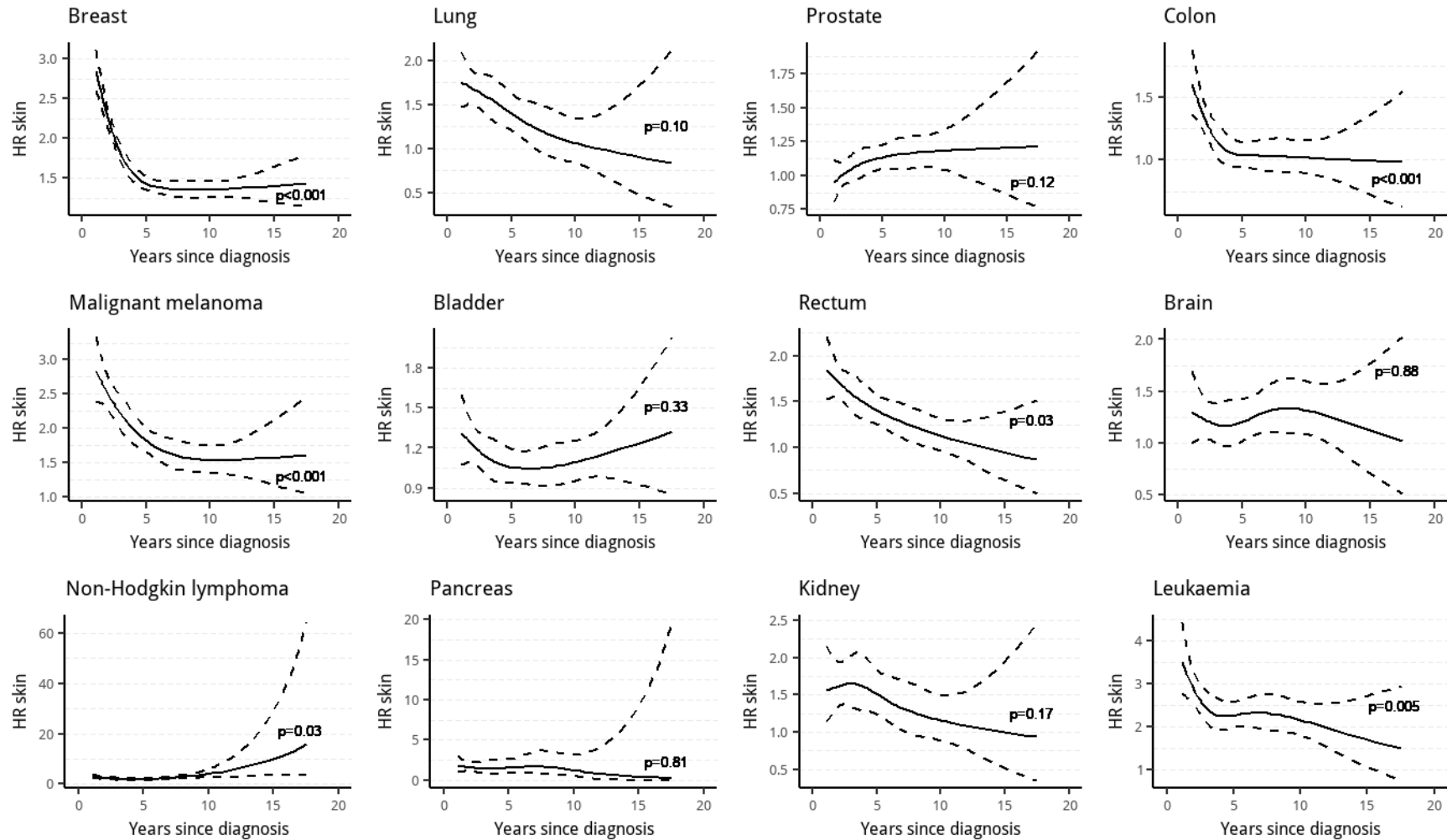
eFigure 11. Adjusted HRs and 95% CIs for hospitalization of survivors of the 12 most frequent cancer types for diseases of the respiratory system as compared with matched cancer-free comparison people. Solid lines represent HRs and the two dashed lines 95% CIs. Note that the y-axes are not the same. *P* values for test of hypothesis of constant HR over time.



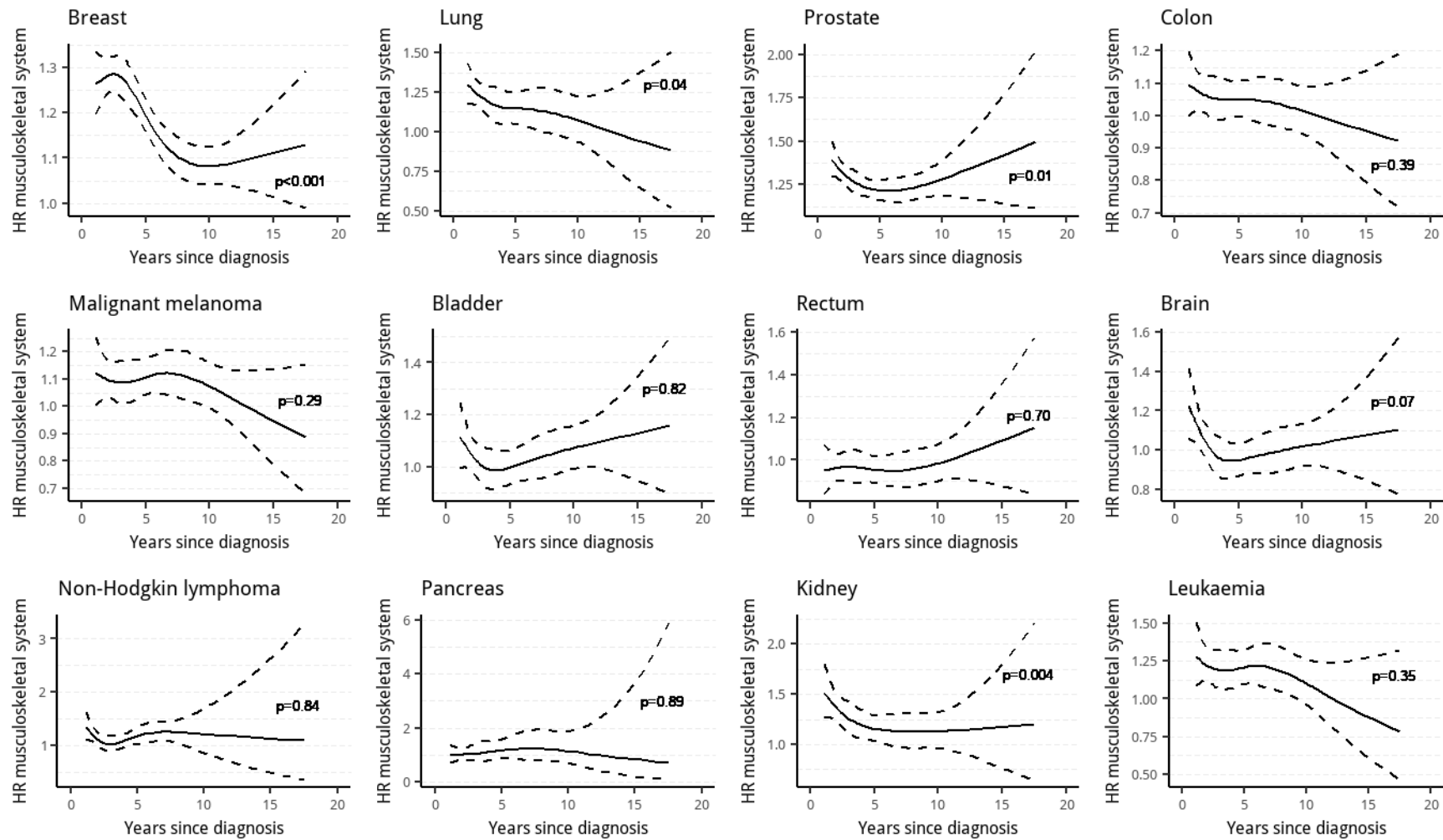
eFigure 12. Adjusted HRs and 95% CIs for hospitalization of survivors of the 12 most frequent cancer types for diseases of the digestive system as compared with matched cancer-free comparison people. Solid lines represent HRs and the two dashed lines 95% CIs. Note that the y-axes are not the same. *P* values for test of hypothesis of constant HR over time.



eFigure 13. Adjusted HRs and 95% CIs for hospitalization of survivors of the 12 most frequent cancer types for diseases of the skin and subcutaneous tissue as compared with matched cancer-free comparison people. Solid lines represent HRs and the two dashed lines 95% CIs. Note that the y-axes are not the same. *P* values for test of hypothesis of constant HR over time.



eFigure 14. Adjusted HRs and 95% CIs for hospitalization of survivors of the 12 most frequent cancer types for diseases of the musculoskeletal system and connective tissue as compared with matched cancer-free comparison people. Solid lines represent HRs and the two dashed lines 95% CIs. Note that the y-axes are not the same. *P* values for test of hypothesis of constant HR over time.



eFigure 15. Adjusted HRs and 95% CIs for hospitalization of survivors of the 12 most frequent cancer types for diseases of the genitourinary system as compared with matched cancer-free comparison people. Solid lines represent HRs and the two dashed lines 95% CIs. Note that the y-axes are not the same. *P* values for test of hypothesis of constant HR over time.

